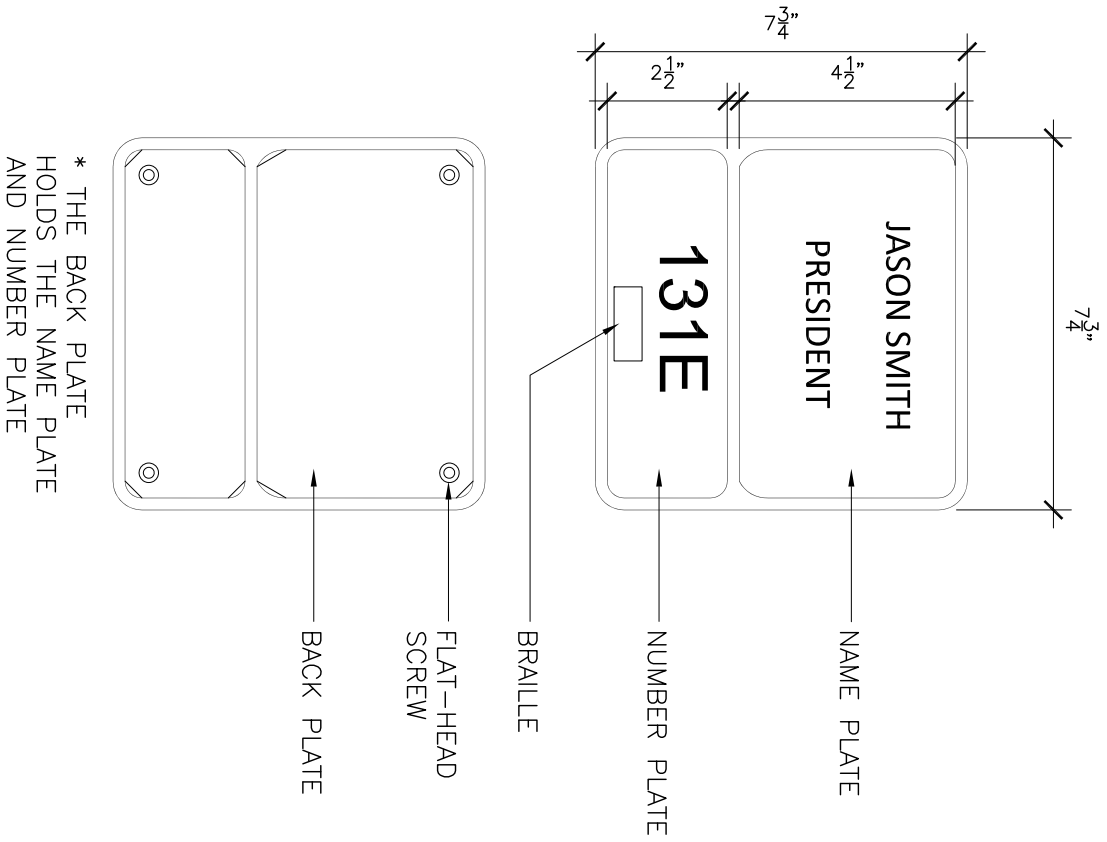


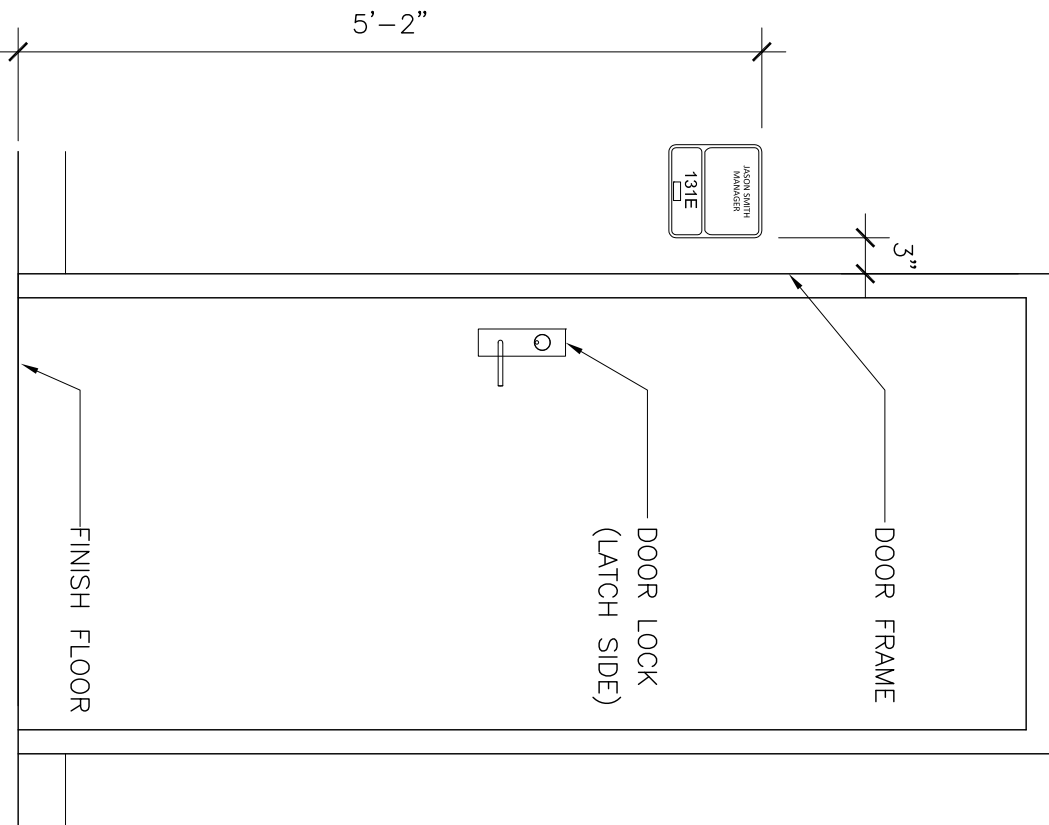
FLORIDA INTERNATIONAL UNIVERSITY

APPENDIX “E”

STANDARD DETAILS & NOTES



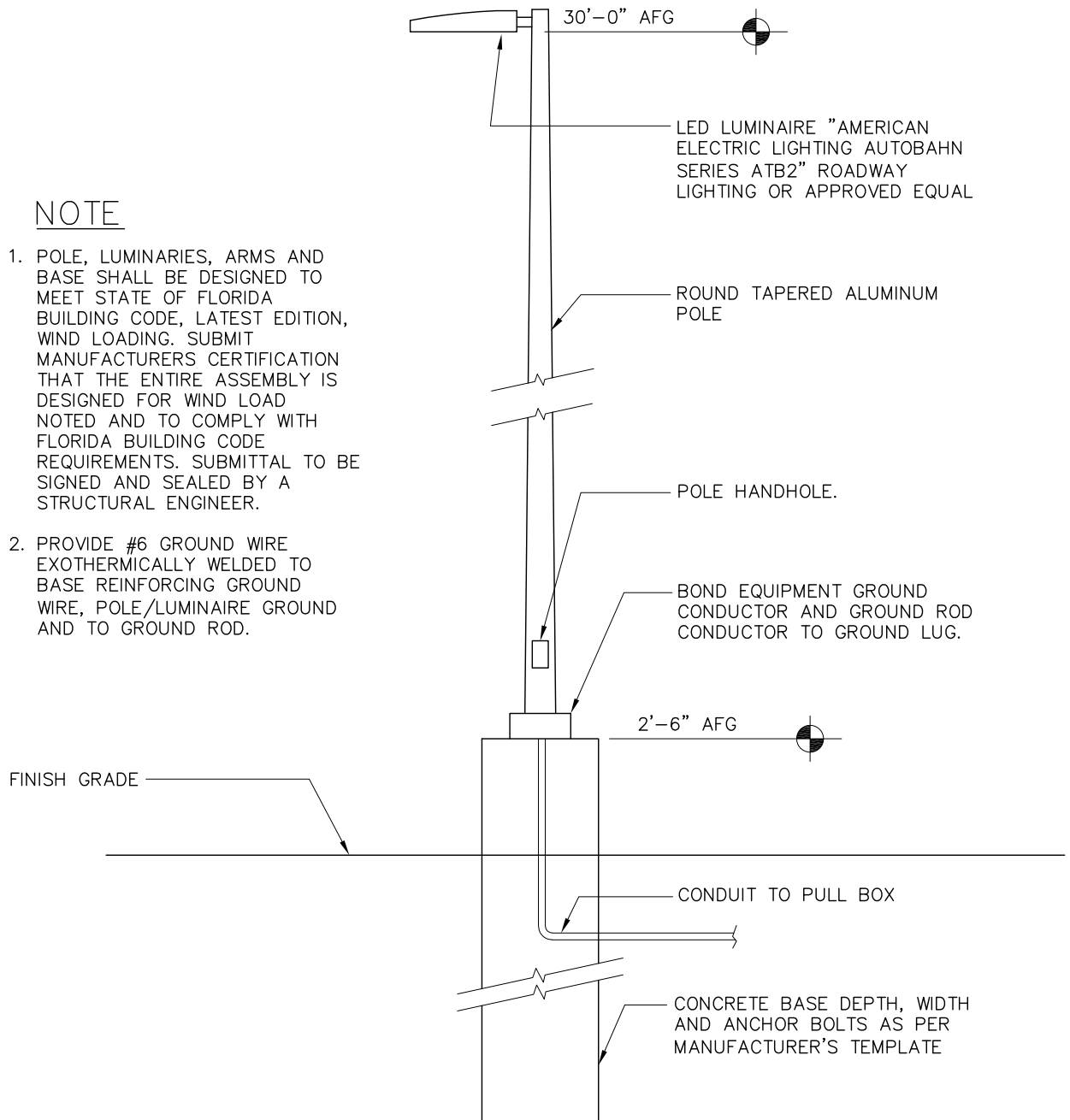
* THE BACK PLATE
HOLDS THE NAME PLATE
AND NUMBER PLATE



- SINGLE DOORS – SIGN SHALL BE MOUNTED NEXT TO THE DOOR ON THE LATCH SIDE.
- DOUBLE DOORS (TWO ACTIVE LEAVES) – SIGN SHALL BE LOCATED TO THE RIGHT OF THE RIGHT HAND DOOR.
- DOUBLE DOORS (ONE ACTIVE LEAF) – SIGN SHALL BE LOCATED ON THE INACTIVE LEAF SIDE.
- WHEN THERE IS NO WALL SPACE – SIGN SHALL BE LOCATED ON THE NEAREST ADJACENT WALL.

NOTE

1. POLE, LUMINARIES, ARMS AND BASE SHALL BE DESIGNED TO MEET STATE OF FLORIDA BUILDING CODE, LATEST EDITION, WIND LOADING. SUBMIT MANUFACTURERS CERTIFICATION THAT THE ENTIRE ASSEMBLY IS DESIGNED FOR WIND LOAD NOTED AND TO COMPLY WITH FLORIDA BUILDING CODE REQUIREMENTS. SUBMITTAL TO BE SIGNED AND SEALED BY A STRUCTURAL ENGINEER.
2. PROVIDE #6 GROUND WIRE EXOTHERMICALLY WELDED TO BASE REINFORCING GROUND WIRE, POLE/LUMINAIRE GROUND AND TO GROUND ROD.

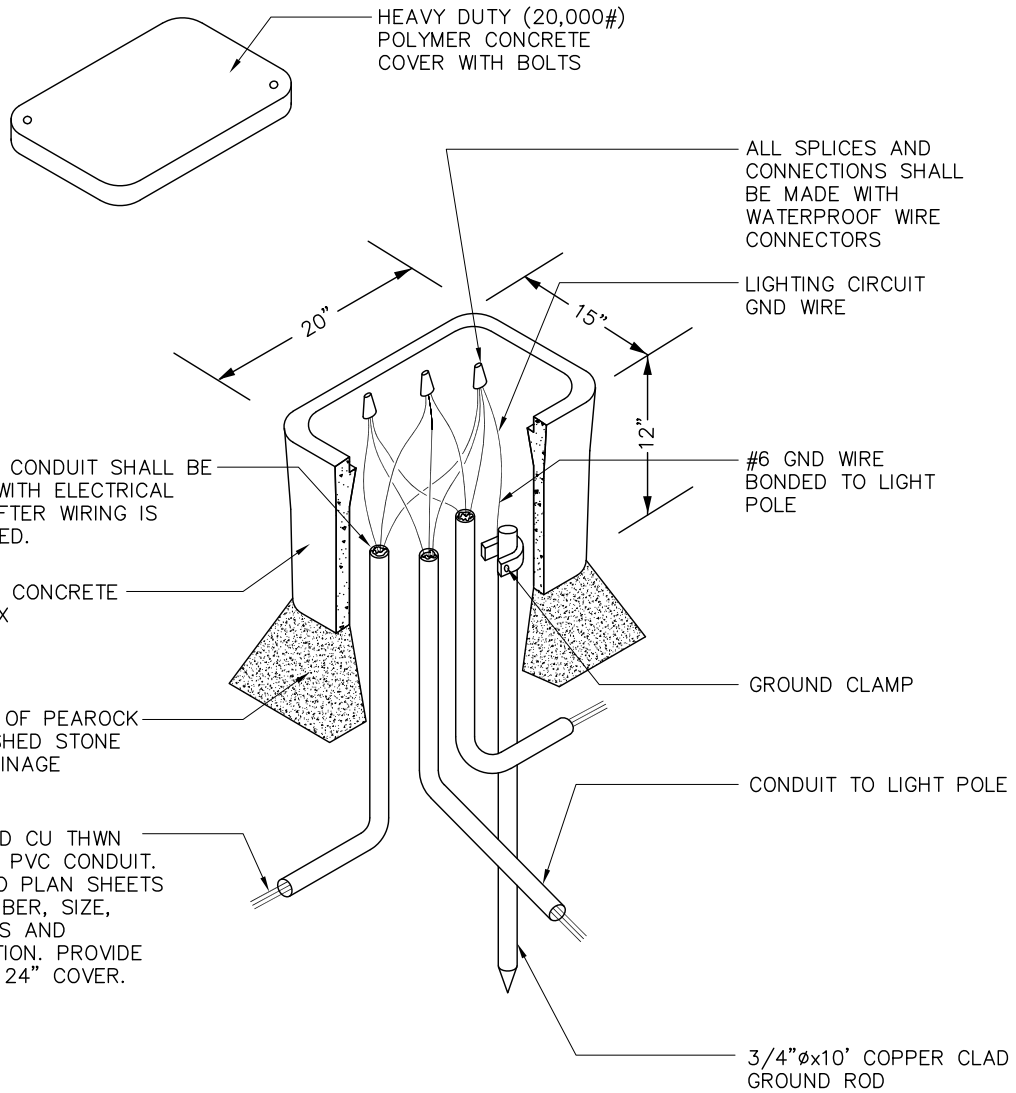


FLORIDA INTERNATIONAL
UNIVERSITY
FACILITIES
CONSTRUCTION SERVICES

TYPICAL ROAD/PARKING LOT LIGHTING DETAIL

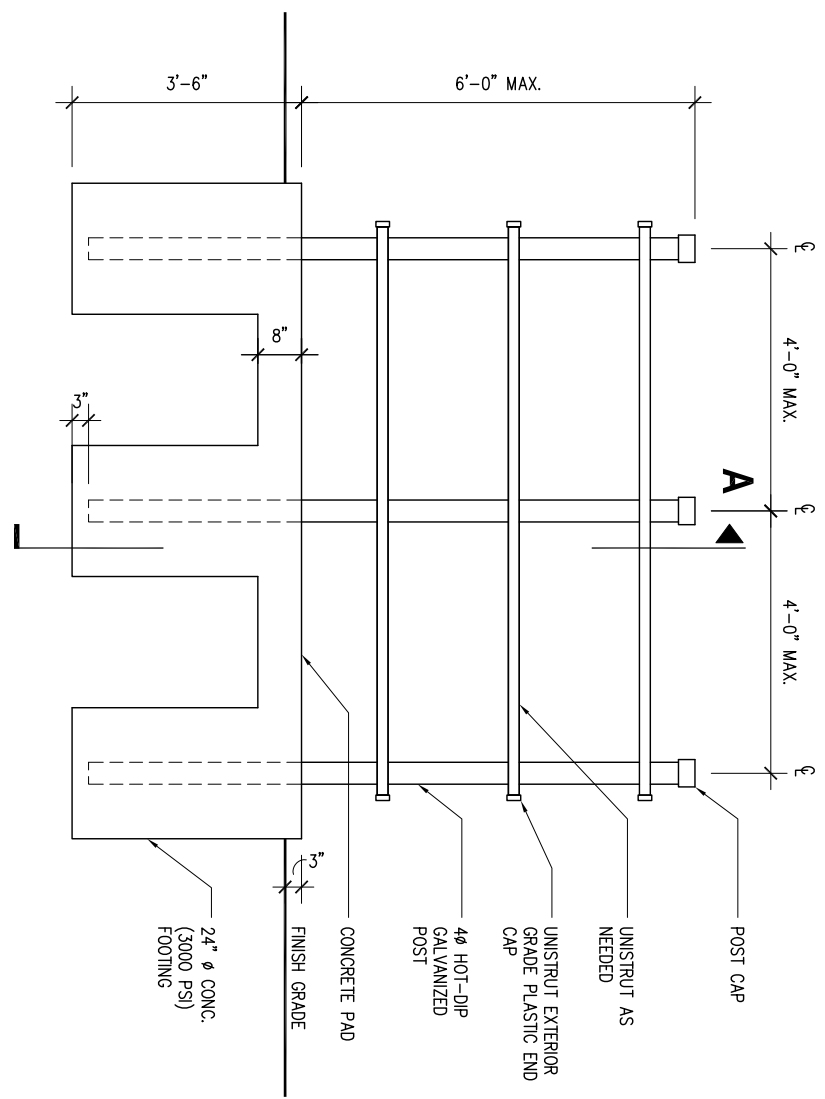
DRAWING 26-100-D001

DATE: 7/31/18
SCALE: N.T.S.

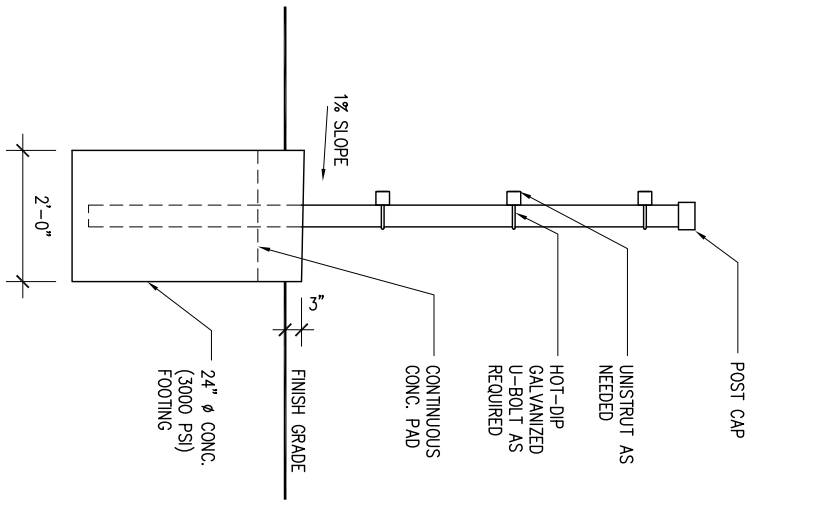


NOTE:
PROVIDE 8x8x6 UL LISTED MOLDED NON METALIC
JUNCTION BOX BY CARLON OR EQUAL

ELEVATION



SECTION 'A'

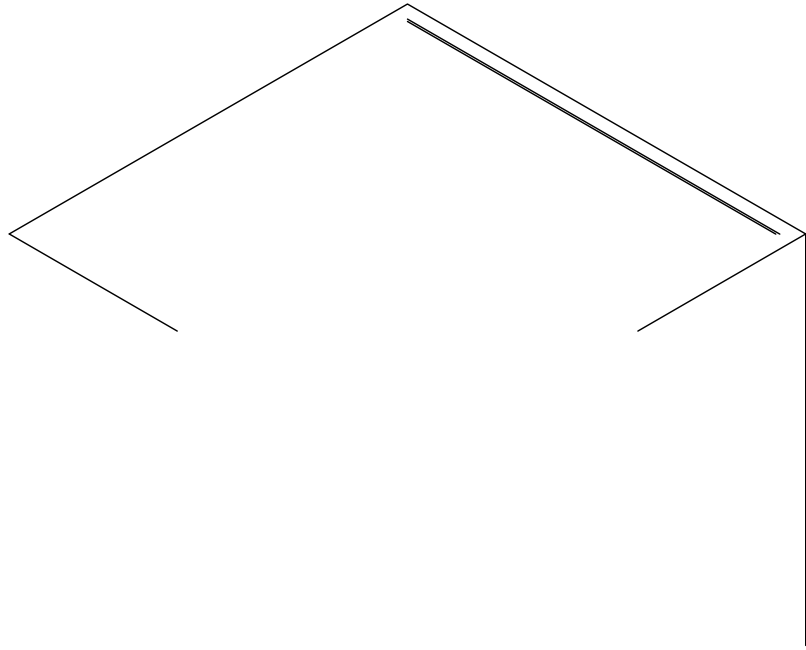


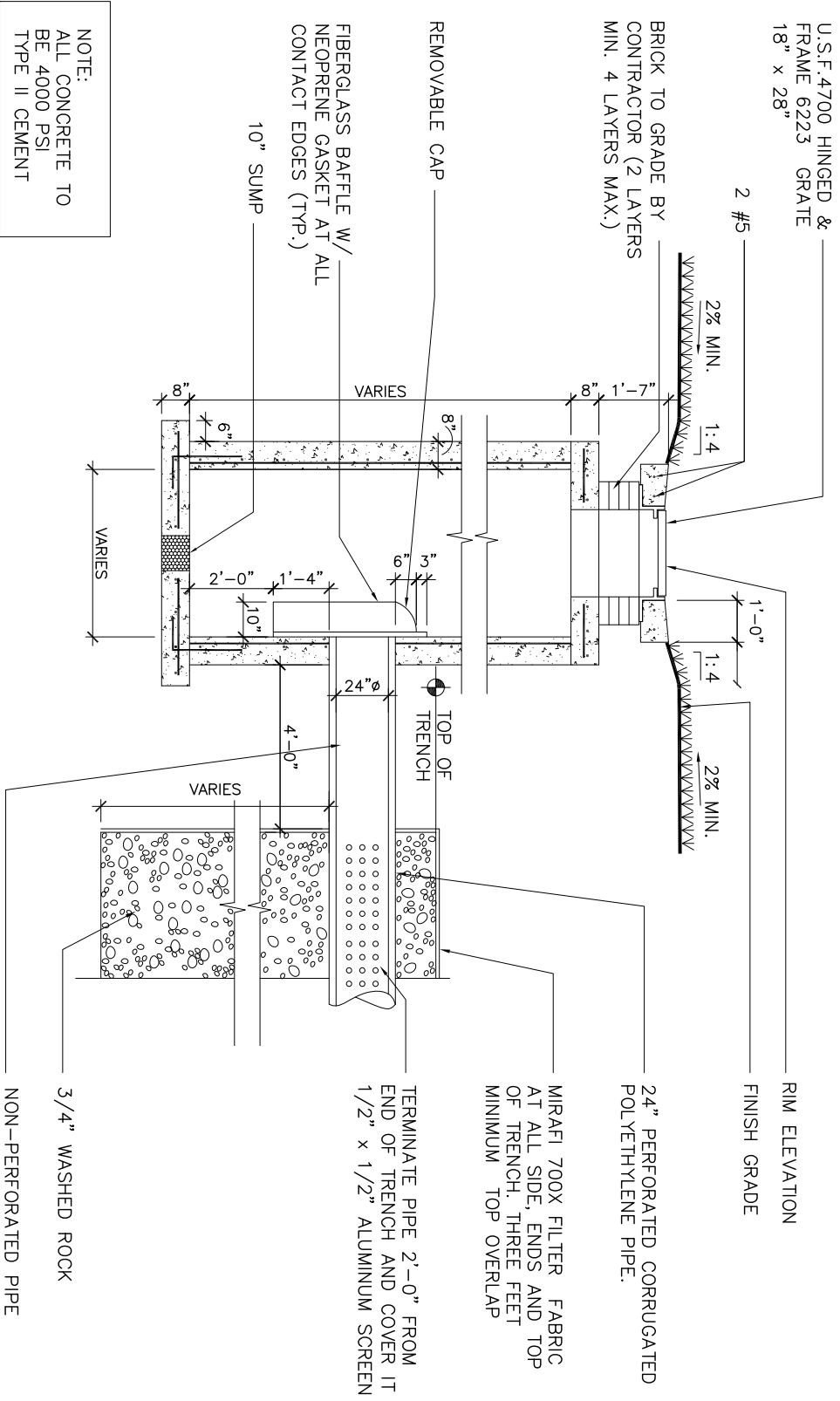
FLORIDA INTERNATIONAL UNIVERSITY
FACILITIES CONSTRUCTION SERVICES

EQUIPMENT RACK DETAIL

DRAWING 26-100-D003

DATE: 7/31/18
SCALE: N.T.S.

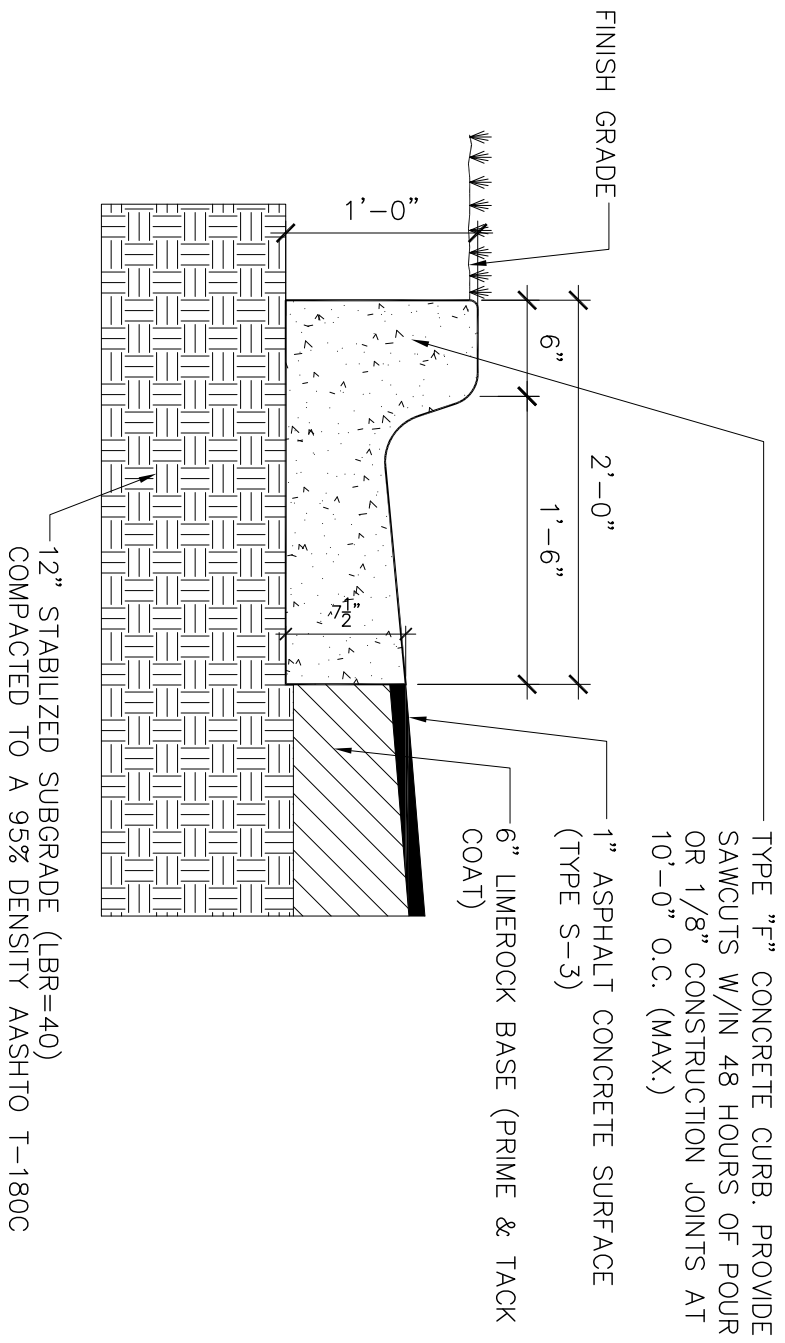




CATCH BASIN

DRAWING 32-100-D001

DATE: 7/31/18
SCALE: N.T.S.



- GENERAL NOTES:
1. THE CONTRACTOR SHALL VISIT THE SITE AND SHALL FULLY ACQUAINT HIMSELF WITH CONDITIONS RELATING TO CONSTRUCTION, TO INCLUDE DIFFICULTIES AND RESTRICTIONS RELATED TO EXECUTION OF THE WORK, AND EXISTING CONDITIONS IN THE FIELD.
 2. THE CONTRACTOR SHALL NOTIFY THE PROJECT MANAGER OF ANY DISCREPANCIES, OMISSIONS AND OR ANY OTHER CONFLICTS OR IRREGULARITIES PRIOR TO THE COMMENCEMENT OF ANY WORK.
 3. WHERE NEW PAVEMENT IS TO BE CONNECTED TO AN EXISTING PAVEMENT, THE EXISTING ASPHALT SHALL BE SAW CUT AND REMOVED 12" FROM THE EXIST. EDGE.
 4. ALL EXISTING EXPOSED BASE ROCK SHALL BE FULLY REPRIMED.
 5. CONTRACTOR SHALL BE RESPONSIBLE FOR REPAIRING OR PATCHING ANY DAMAGE WHICH MAY OCCUR DURING CONSTRUCTION ACTIVITIES.

TYPE "F" CONCRETE CURB DETAIL

DRAWING 32-100-D002

DATE: 8/1/18
SCALE: N.T.S.

TOOLED CONTROL JOINT

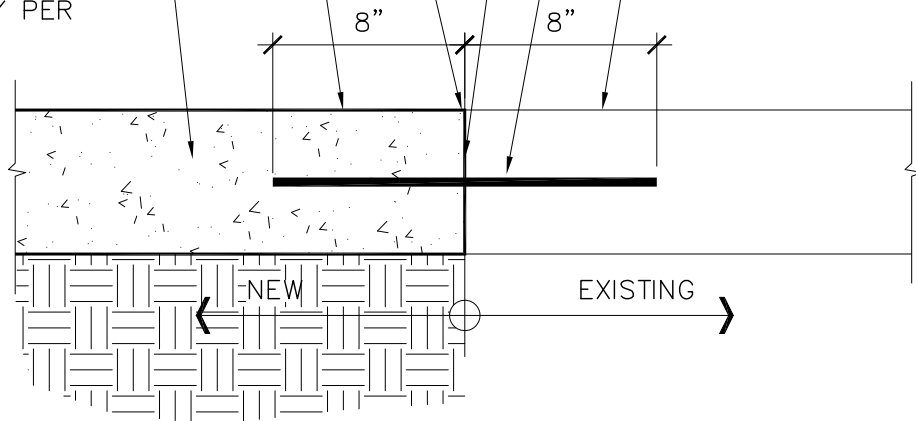
LIGHT BROOM FINISH (TYP.)

NEW 6" THICK
CONCRETE SIDEWALK
5x5 W1.4x W1.4 WWF
CONST. 1/8" CONTROL
JOINT @ 5'-0" O.C.
CONCRETE SHALL BE
CLASS I CONC. WITH A
MINIMUM STRENGTH OF
3000 PSI.
COMPACT SUB-GRADE
TO 95% DENSITY PER
AASST T-99

SAW CUT

#4 BARS DOWLED
INTO EXISTING SLAB
WITH EPOXY GROUT,
MIN 8" EMBEDMENT @
24" C.C.

EXISTING CONC. SLAB

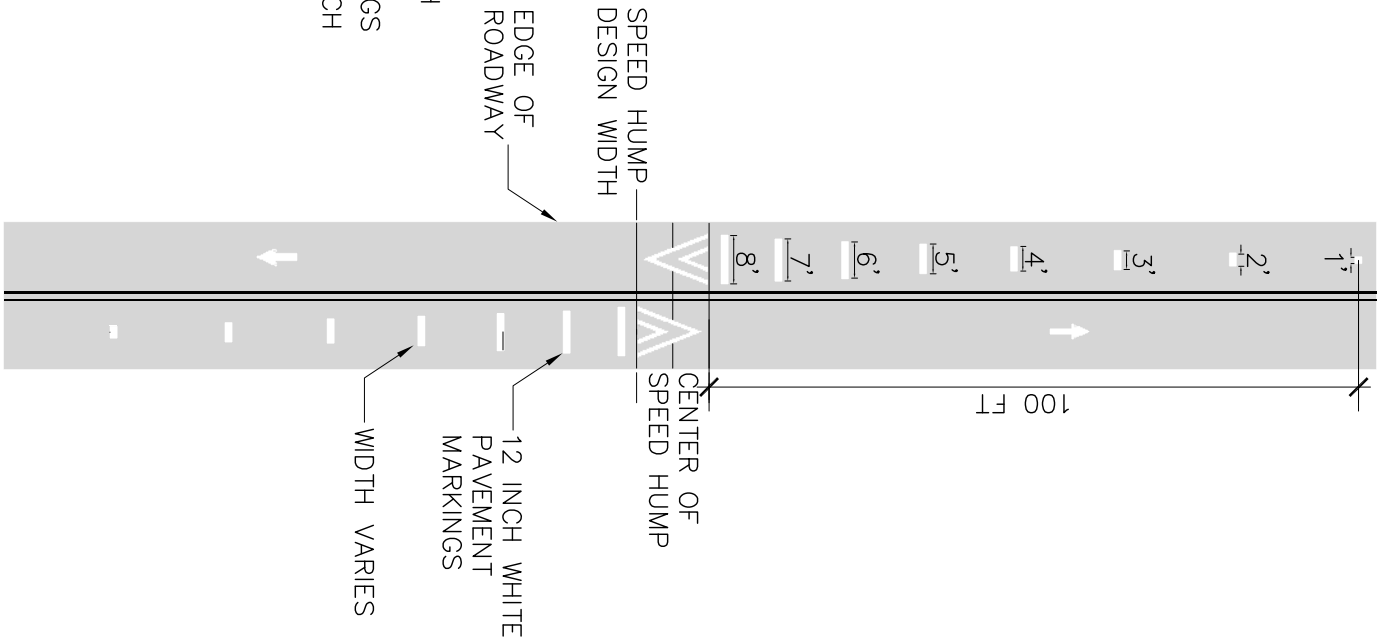
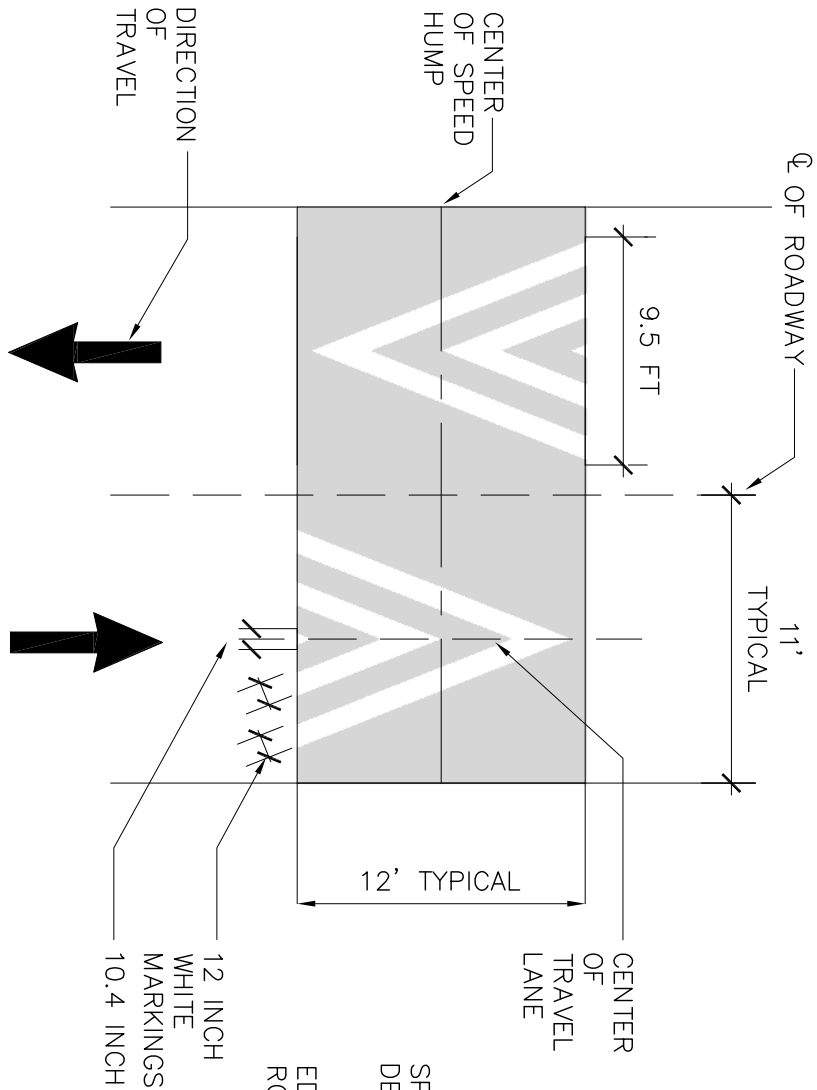


FLORIDA INTERNATIONAL
UNIVERSITY
FACILITIES
CONSTRUCTION SERVICES

SIDEWALK TO EXISTING DETAIL

DRAWING 32-100-D003

DATE: 8/2/18
SCALE: N.T.S.

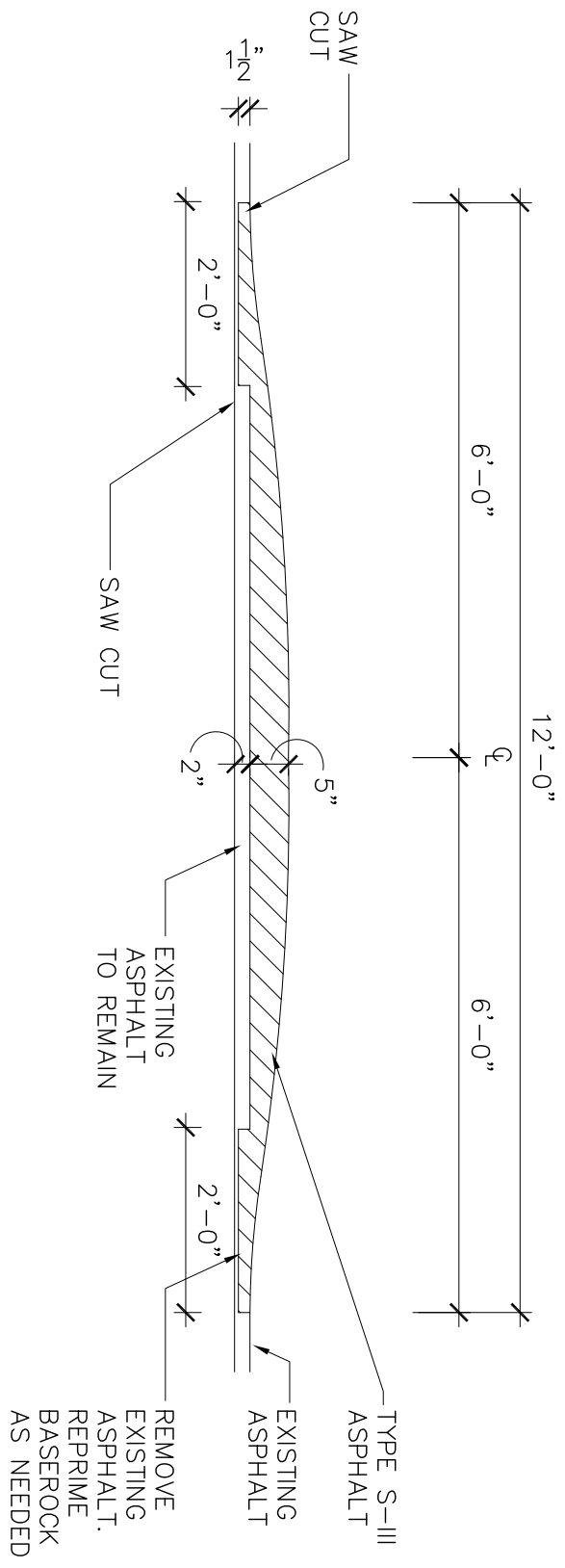


FLORIDA INTERNATIONAL UNIVERSITY
 FACILITIES CONSTRUCTION SERVICES

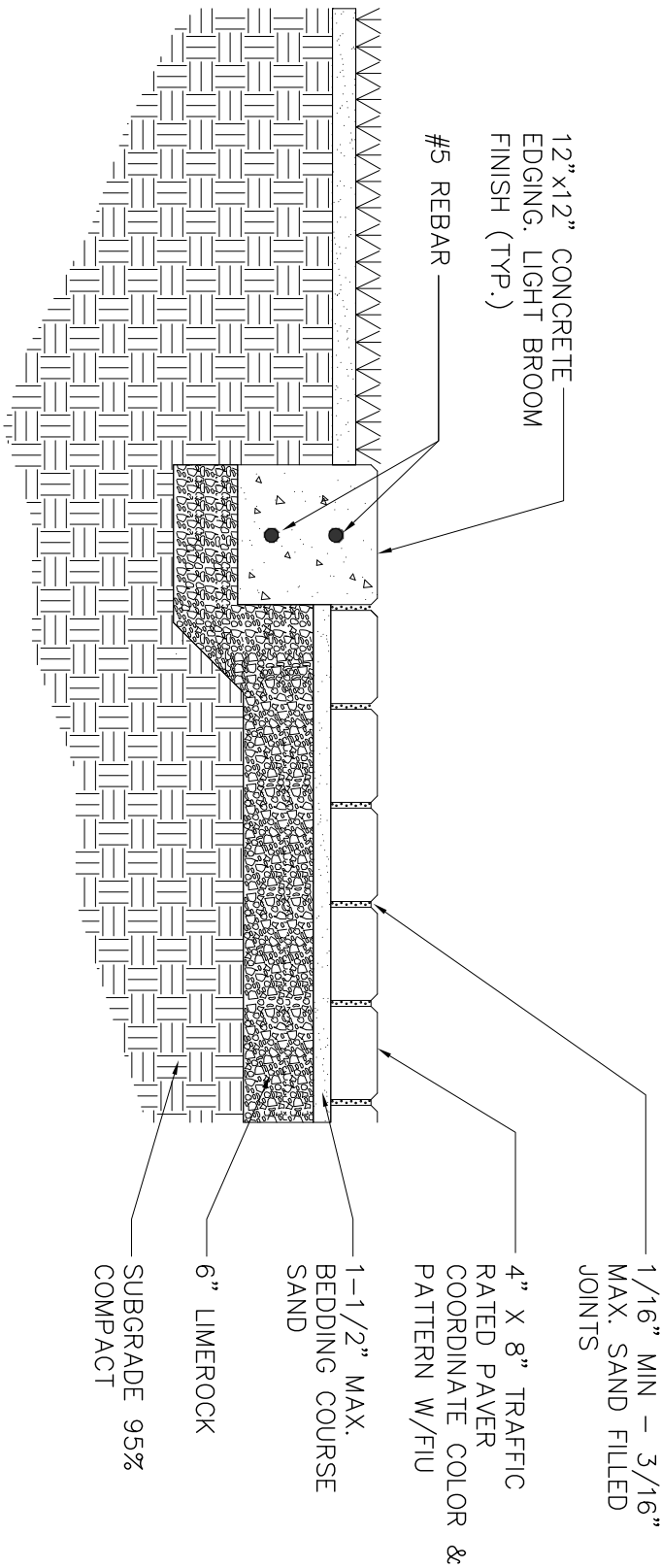
SPEED HUMPH MARKING

DRAWING 32-100-D004

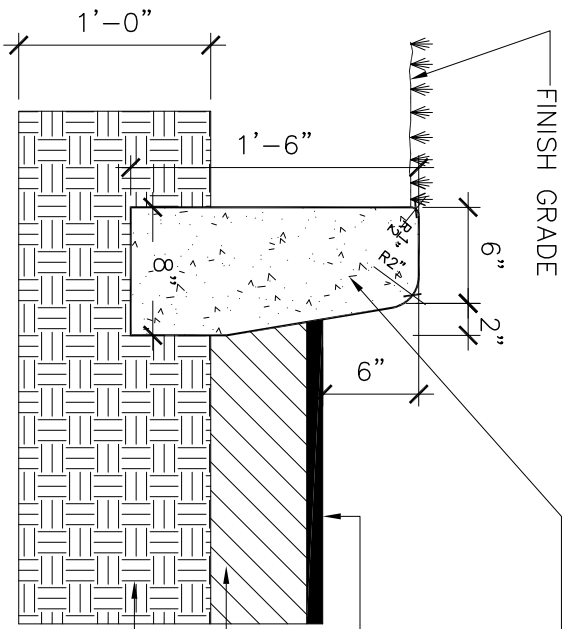
DATE: 8/2/18
 SCALE: N.T.S.



SPEED HUMP SECTION



TYPICAL PAVER EDGE DETAIL



TYPE "D" CONCRETE CURB.
 PROVIDE SAWCUTS W/IN 48
 HOURS OF POUR OR 1/8"
 CONSTRUCTION JOINTS AT
 10'-0" O.C. (MAX.)

1" ASPHALT CONCRETE
 SURFACE (TYPE S-3)

6" LIMEROCK BASE (PRIME &
 TACK COAT)

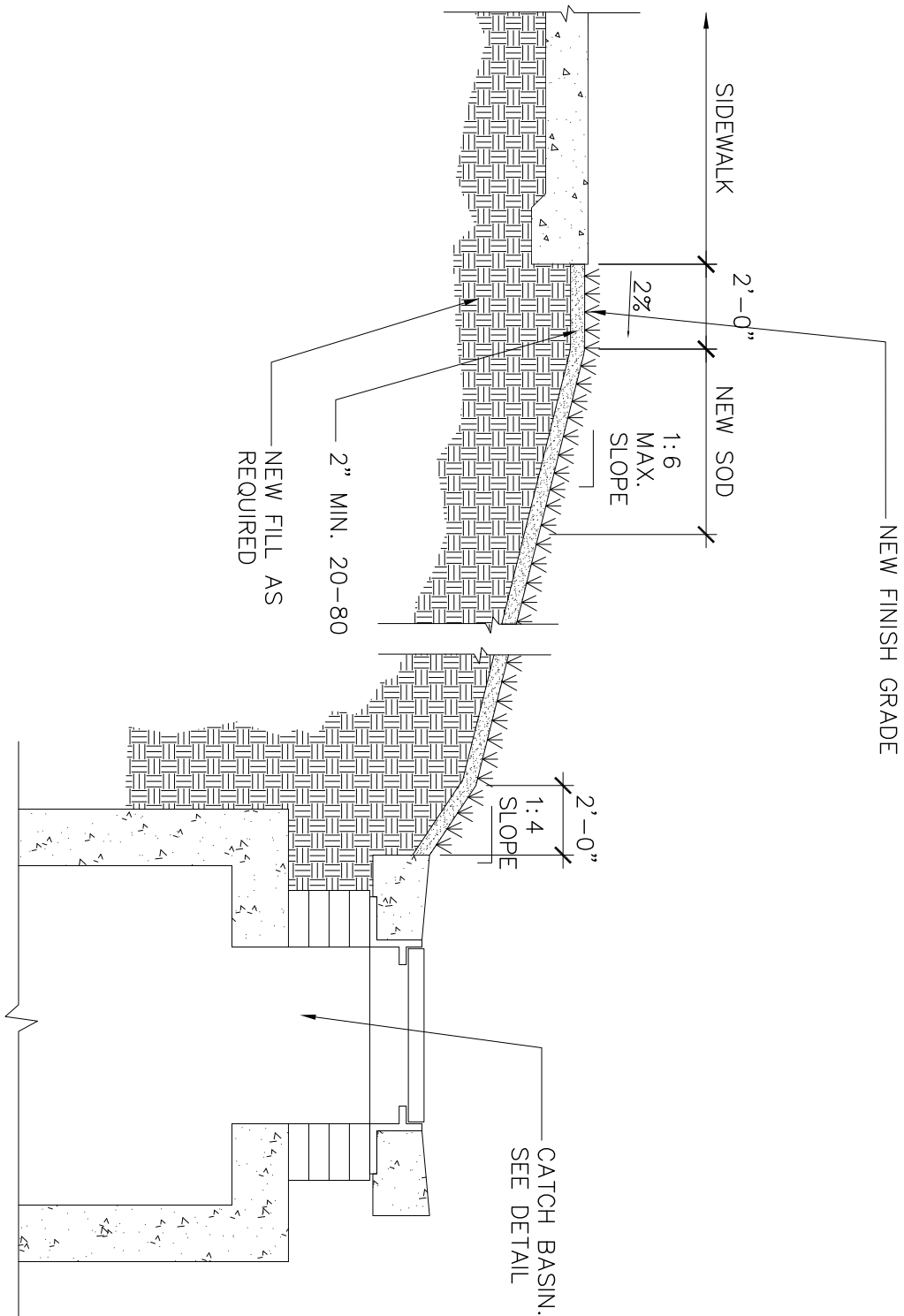
12" STABILIZED SUBGRADE
 (LBR=40)
 COMPACTED TO A 95% DENSITY
 AASHTO T-180C

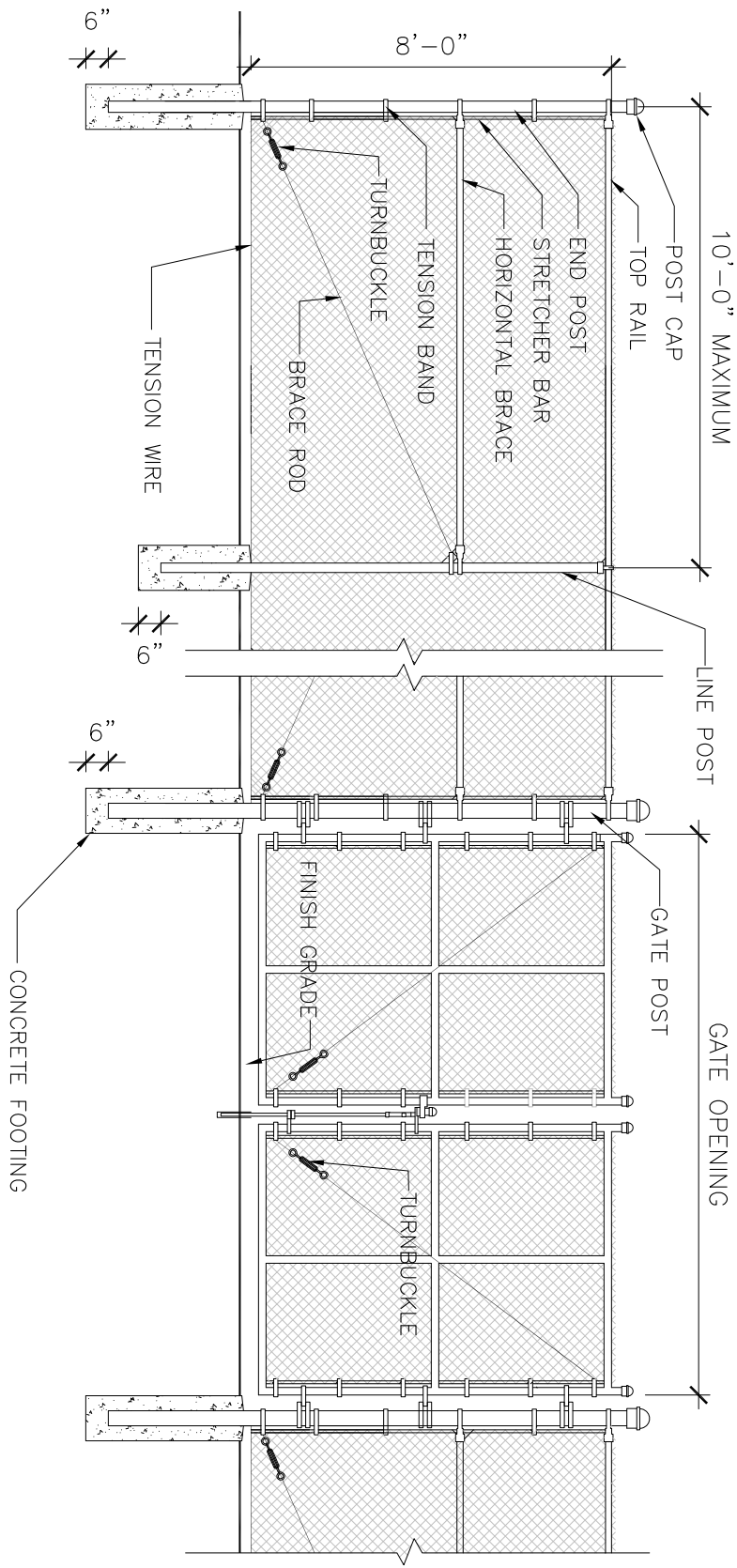
- GENERAL NOTES:
1. THE CONTRACTOR SHALL VISIT THE SITE AND SHALL FULLY ACQUAINT HIMSELF WITH CONDITIONS RELATING TO CONSTRUCTION, TO INCLUDE DIFFICULTIES AND RESTRICTIONS RELATED TO EXECUTION OF THE WORK, AND EXISTING CONDITIONS IN THE FIELD.
 2. THE CONTRACTOR SHALL NOTIFY THE PROJECT MANAGER OF ANY DISCREPANCIES, OMISSIONS AND OR ANY OTHER CONFLICTS OR IRREGULARITIES PRIOR TO THE COMMENCEMENT OF ANY WORK.
 3. WHERE NEW PAVEMENT IS TO BE CONNECTED TO AN EXISTING PAVEMENT, THE EXISTING ASPHALT SHALL BE SAW CUT AND REMOVED 12" FROM THE EXIST. EDGE.
 4. ALL EXISTING EXPOSED BASE ROCK SHALL BE FULLY REPRIMED.
 5. CONTRACTOR SHALL BE RESPONSIBLE FOR REPAIRING OR PATCHING ANY DAMAGE WHICH MAY OCCUR DURING CONSTRUCTION ACTIVITIES.

TYPE "D" CONCRETE CURB DETAIL

DATE: 8/2/18
 SCALE: N.T.S.

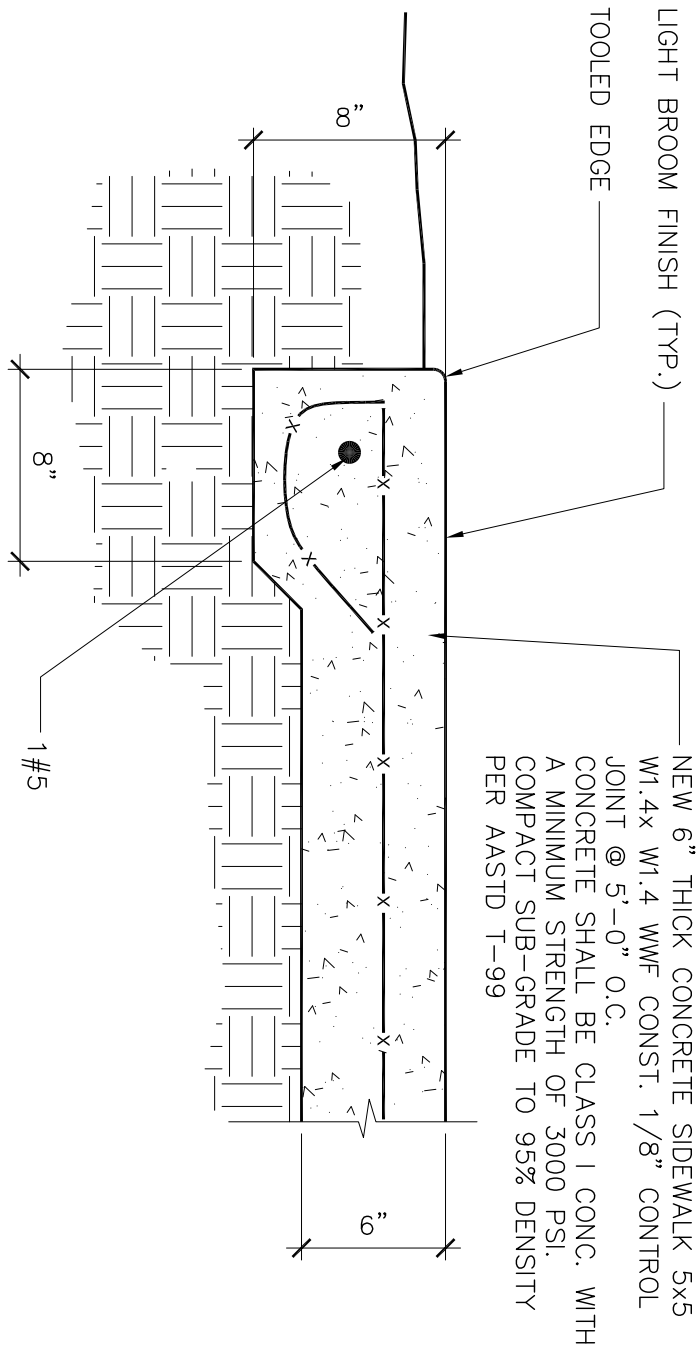
DRAWING 32-100-D007





FENCE NOTES

1. ALL MATERIAL FOR FENCE POST AND FRAMING SHALL BE SCHEDULE 40 HOT-DIPPED GALVANIZED STEEL WITH GALVANIZED COATING WEIGHING 1.8 OZ. PER SQ. FT. MINIMUM.
2. CONTRACTOR SHALL SUBMIT PRODUCT DATA IN THE FORM OF MANUFACTURE'S TECHNICAL DATA, SPECIFICATIONS AND INSTALLATION INSTRUCTION FOR FENCE AND GATE POST, GATES, HARDWARE AND ACCESSORIES.
3. LINE POST SHALL BE 2.5" O.D. @ 10'-0" O.C. WITH A MIN. FOOTING DEPTH OF 3'-0" AND MIN. POST FTG. OF 2'-6".
4. CORNER, END AND PULL POSTS SHALL BE 3" O.D. WITH A MIN. FOOTING DEPTH OF 3'-6" AND MIN. POST FTG. OF 3'-0".
5. DOUBLE GATE (12'-0" WIDE) POST SHALL BE 4" O.D. WITH A MIN. FOOTING DEPTH OF 3'-6" AND MIN. POST FTG. OF 3'-0".
6. INSTALL HORIZONTAL BRACING AT EVERY END, CORNER, GATE AND PULL POSTS. BRACING SHALL BE HOT DIP GALVANIZED SCH. 40 PIPE 1-5/8" O.D. WITH HOT DIPPED GALVANIZED TRUSS RODS, TURNBUCKLES, BOLTS, WASHER AND NUTS. PULL POST BRACING IS TO BE PROVIDED EVERY 200 LINEAL FEET OF STRAIGHT FENCING.
7. INSTALL TOP RAIL TO RUN CONTINUOUSLY BETWEEN LINE, CORNER, GATE, PULL AND END POST. RAILING SHALL BE HOT DIP GALVANIZED SCH. 40 PIPE, 1-5/8" O.D.
8. GATE FRAMES SHALL BE MIN. 2" O.D. SCH.40 HOT DIP GALVANIZED. COAT ALL WELDS WITH A SUITABLE COLD GALVANIZING COMPOUND. ALL GATES MUST BE SUFFICIENTLY TRUSSED AND BRACED TO PREVENT SAGGING.
9. GATE HINGES SHALL BE HOT DIP GALV. , BALL & SOCKET, OFFSET TYPE TO ALLOW GATES TO SWING BACK PARALLEL WITH THE FENCE LINE.
10. GATE LATCHES SHALL BE HOT DIP GALV. READILY LOCKABLE WITH PADLOCK. FOR DOUBLE GATES LATCHES SHALL BE HEAVY DUTY, GALVANIZED, MALLEABLE IRON GATE STOPS WITH STEEL PIPE SLEEVES ANCHORED IN CONCRETE AND ARRANGED TO ENGAGE PLUNGER OF LATCH LOCATED AT THE CENTER OF THE OPENING. LATCH AND PLUNGER SHALL BE REMOVABLE WITHOUT TOOLS.
11. CONSTRUCT KEEPERS OF RUST PROOF MATERIAL. ALL KEEPERS SHALL AUTOMATICALLY ENGAGE THE GATE LEAF AND HOLD IT IN THE OPEN POSITION UNTIL MANUALLY RELEASED. STOPS SHALL BE SET IN CONCRETE.
12. WIRE FABRIC MESH SHALL BE 2" No. 9 GA. GALVANIZED. ALL FABRIC AND TIE WIRE TERMINAL ENDS SHALL BE KNUCKLED AND TURNED AWAY FROM THE TRAFFIC SIDE OF FENCES.
13. PROVIDE ONE 3/16"x 3/4" MIN. O.D. HOT DIP GALVANIZED STRETCHER BAR FOR EACH GATE POST AND END POST TWO INCHES SHORTER THAN FULL HEIGHT OF FABRIC.
14. ALL FABRIC TIE WIRE SHALL BE No. 9 GA., STEEL ALLOY, GALVANIZED, TIE WIRE. TIES SHALL NOT EXCEED 14" O.C. AT LINE, END, CORNER PULL AND GATE POSTS AND 24" O.C. AT TOP RAILS.
15. INSTALL ALL FENCING AND GATES PLUMB, LEVEL AND ALIGNED WITH ALL ABUTTING FENCING IN ACCORDANCE WITH THE MANUFACTURER'S INSTRUCTION AND APPROVED SHOP DRAWINGS.
16. TOP OF FABRIC LINE SHALL BE STRAIGHT AND LEVEL.
17. ALL HARDWARE INCLUDING (BUT NOT LIMITED TO) BRACE BANDS, TENSION BANDS AND STRETCHER TURNBUCKLES SHALL HAVE ROUNDED EDGES.
18. ALL GATES SHALL BE INSTALLED COMPLETE WITH HINGES, LATCHES, KEEPERS AND STOPS. THEY SHALL BE LEVEL AND PLUMB IN THEIR CLOSED POSITION.
19. INSTALL FENCE POSTS LEVEL, PLUMB AND INITIALLY ABOVE THE FINISH FENCE HEIGHT AND THEN CUT LEVEL THROUGHOUT THE FENCE LINE BETWEEN THE CORNER POSTS. INSTALL POST CAPS AS SOON AS THE FOOTINGS HAVE BEEN SET TO PREVENT THE ACCUMULATION OF MOISTURE IN THE POST.
20. SET POST IN 3,000 PI CONCRETE CONSISTING OF NO LESS THAN SIX BAGS OF CEMENT PER CUBIC YARD OF SAND. ROD OR VIBRATE CONCRETE IN EARTH THAT HAS BEEN COMPACTED OR WATER SATURATED AND ALLOWED TO SETTLE.
21. FOOTING DIAMETER SHALL BE NOT LESS THAN FOUR TIMES THE DIAMETER OF THE POST. SLOP THE TOP OF THE FOOTING A MINIMUM OF 1 INCH. TO THE SURROUNDING GRADE TO SHED WATER. POST SHALL BE SET IN CONCRETE IN ITS ENTIRE UNDERGROUND LENGTH FROM GRADE LEVEL TO THE RECOMMENDED DEPTH THEN RAISED 6" UNTIL THE CONCRETE HAS FULLY CURED.



SIDEWALK EDGE DETAIL

DRAWING 32-100-D011