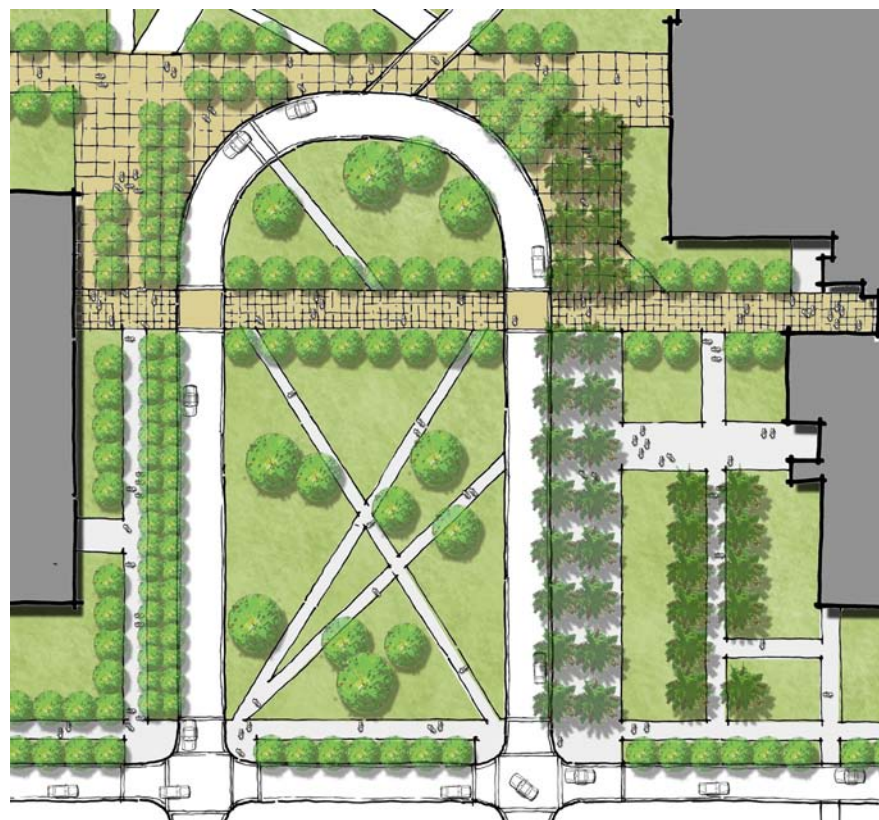




Quad framed by buildings on three sides



Proposed quad extension at Biscayne Bay Campus



Description:

A quadrangle is a green space usually square or rectangular in plan, the sides of which are entirely or mainly defined by buildings and reinforced by the landscape design. The single most important aspect of a quadrangle is clear spatial definition. The specific qualities of each quad vary with size, purpose and context but all are primarily informal spaces, characterized by open usable green space with a combination of shade trees planted in asymmetrical groups and paths configured to provide direct pedestrian access to key buildings and spaces beyond. Quads should have significant areas shaded and protected from rain by structures. These should be used for individual and group interaction and study.

Elements:

Hardscape: Sidewalks are generally limited to the edges of the quad, adjacent to the buildings for access as well to define the quad's edges. Additional hardscape is minimal beyond the edges of the quad. Sidewalks shall cross the quads to allow direct connections for pedestrians between building entrances as well as at significant quad entrances.

Plant Materials: Canopy, primarily hardwood trees should be planted to maximize shade within the quad. Trees including palms should line the edges to further define the space while allowing for open areas within the quads for passive recreation and gatherings. For some quads, canopy trees shall be grouped together to expand the tree canopy to provide shade. A clear understory should be maintained with the ground plane being predominately lawn.

Site Furnishings: Benches and trash receptacles shall be primarily located on the edges of the quad adjacent to the pedestrian walkways.

Lighting: Appropriate, free standing light standards further define the edges of the quad and enhances the picturesque character of the space. Lights shall be spaced to provide for a consistent and continuous coverage at a pedestrian scale while minimizing night sky pollution.

Special Features: Existing water bodies should remain and become integral parts of the visual character of the quad. Sidewalks should provide access to the water edge as well as a continuous path around the edge to further define the water as an amenity within the quad. The incorporation of future art installations should be strategically located to maximize views.

Campus Spaces

Quad

Promenade

Courtyard

Plaza

Special Purpose Landscape

KEY MAP

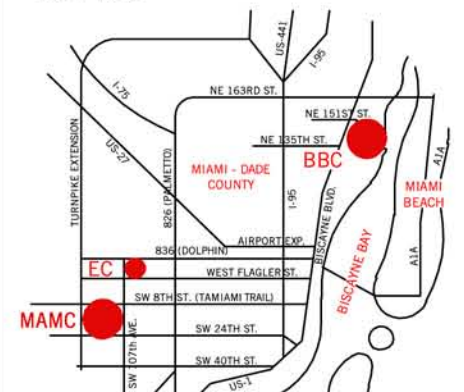


FIGURE: 16.0 A1

Landscape Framework Quad



Campus Master Plan - June 2010

