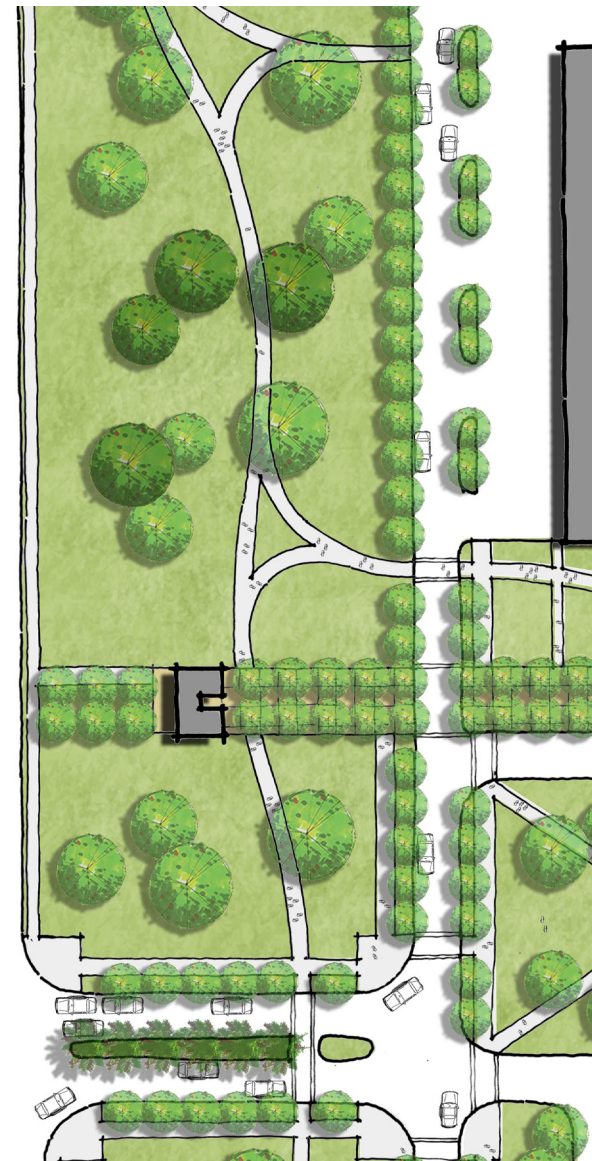
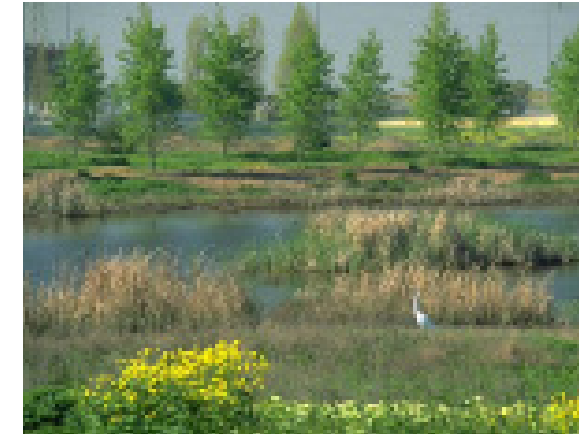




Special Purpose Landscapes offer opportunities for teaching and research as well as passive recreation



Proposed Special Purpose Landscape at Engineering Center Campus

Description:

Special Purpose Landscapes provide opportunities for teaching and research or passive and active recreation opportunities. The type of space is determined by the landscape materials, structure and use. Areas may include a vast ground plane of lawn that promote active and passive recreation. They might also include wetlands or woodlands that lend themselves to educational opportunities. A third type of landscape is a garden, characterized by clearly defined edges, variety in plant and hardscape material bound together to create a space with a common element or intent. and Special landscape areas are different than quads in that they are larger spaces and their edges are not necessarily defined by buildings. They also provide a picturesque, natural backdrop to the more urban texture of the campus

Elements:

Hardscape: Hardscape materials and location are determined based on the type of space. Existing wetlands and woodland should use pervious material or raised boardwalks to allow for pedestrian movement with the space. Sidewalks are generally limited to the edges of the of larger open spaces or to create direct connections between heavy pedestrian traffic routes. Gardens allow for a variety of pervious and impervious materials.

Plant Materials: Plant materials and location are determined based on the type of space.

Campus Spaces

- Quad
- Promenade
- Courtyard + Square
- Plaza
- Special Purpose Landscape

KEY MAP

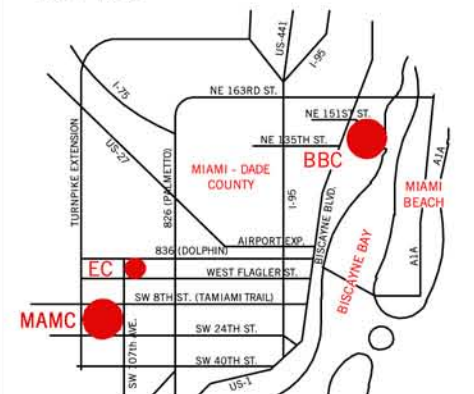


FIGURE: 16.0 A5
Landscape Framework
Special Purpose Landscape



Campus Master Plan - June 2010

