



FLORIDA
INTERNATIONAL
UNIVERSITY

FLORIDA INTERNATIONAL UNIVERSITY

CAMPUS MASTER PLAN UPDATE 2010-2020

Focus Groups Work Session #1

27/28/30 AUGUST 2012

PERKINS+WILL

Focus Group 2

Focus Group 2

Friday, August 31th, 9:30AM - 11:30AM

Group 2 - Open Space, Recreation, Land Use, Conservation & Coastal Management

Steven Moll, Steering Committee Advocate

Rob Frye (MMC Recreation)

Greg Olson (BBC Recreation)

Carrie Kashar (Sustainability)

Michael Heithaus (Coastal)

Joost Nuninga (Solid Waste)

Marta Canaves (Landscape Architecture)

Raul Reis (Journalism)

Jim Wassenaar (Housing)

Emilio Collyer (FIU-SGA Representative)

Daniela Bueso (FIU Student-SEAS)



FLORIDA
INTERNATIONAL
UNIVERSITY

Schedule/ Process

Master Planning Schedule

Inventory & Analysis	July-Oct 2012
Preliminary Alternative Concepts	Nov-Dec 2012
Concept Plan Development	Jan 2013
Draft Comprehensive Master Plan	Feb-July 2013
Final Comprehensive Master Plan	Aug-Dec 2013
BOT Approval of Master Plan	Dec 2013

University-Wide Campus Master Plan Elements



-State Required Elements

-Optional Elements

Major Planning Challenges

- Develop a Sustainable Campus Environment
- Develop better options with Transportation and Access
- Establish better Connectivity with Neighboring Communities
- Meeting Increased Enrollment-Housing, Academic & Research
- Land Use Constraints at MMC, EC, and BBC

Major Issues: 2012 Evaluation / Appraisal Report

- **Overcrowding at Modesto Maidique Campus**
- **Accountability Measures to Exceptions to the Campus Master Plan**
- **Parking Availability / Accessibility & Transportation Options**
- **Traffic Congestion / Roadway Capacity**
- **Student Housing Demand**
- **Recreation & Open Space Preservation**
- **Land Use Constraints**
- **Future of Biscayne Bay Campus & Engineering Center**
- **Campus Identity: Architecture and Landscaping**
- **Improved Relations with Host Communities**

Prioritize EAR Issues

Focus Group 2

Friday, August 31th, 9:30AM - 11:30AM

Group 2 - Open Space, Recreation, Land Use, Conservation & Coastal Management - EAR Agenda Items:

Recreation and Open Space

1. Better define open space for use as multi-purpose, passive recreation, active recreation, and events
2. Pursue agreements and memoranda of understanding as needed to provide for the joint use of identified sites, facilities, and programs
3. Develop Strategies to design, renovate, or expand recreation spaces at Modesto A. Madique (MMC), Engineering Center (EC), and Biscayne Bay (BBC) to meet the current and projected student enrollment needs
4. Address intramural facilities to correct existing deficiencies and to meet the future needs of the University
5. Address existing deficiencies at the BBC Recreation Center

Land Use

1. Integrate more “mixed-use” planning into the Campus Master Plan. Housing; recreation, dining, and educational space should all be integrated where possible
2. Consider acquisition additional lands near or adjacent to MMC for future development
3. Consider spatial land impacts of future locations for the Pavilion and Events Center at President’s Park; locations for Classroom/Office/Generic Research space, and possible future development of the Fair Grounds
4. Modify land use designations and land use maps to align with current strategies

Conservation

1. Support air quality and water quality monitoring programs to document pollutant levels generated by campus facilities.
2. Support areas designated as conservation space by adhering to compliance benchmarks set by regulatory agencies. Adhere to mitigation requirements for development impacting flood prone areas.
3. Support sustainability programs in order to -meet or exceed current and future needs of the University.

Coastal Management

Key Issues/ Best Practices

Focus Group 2

Friday, August 31th, 9:30AM - 11:30AM

Group 2 - Open Space, Recreation, Land Use, Conservation & Coastal Management

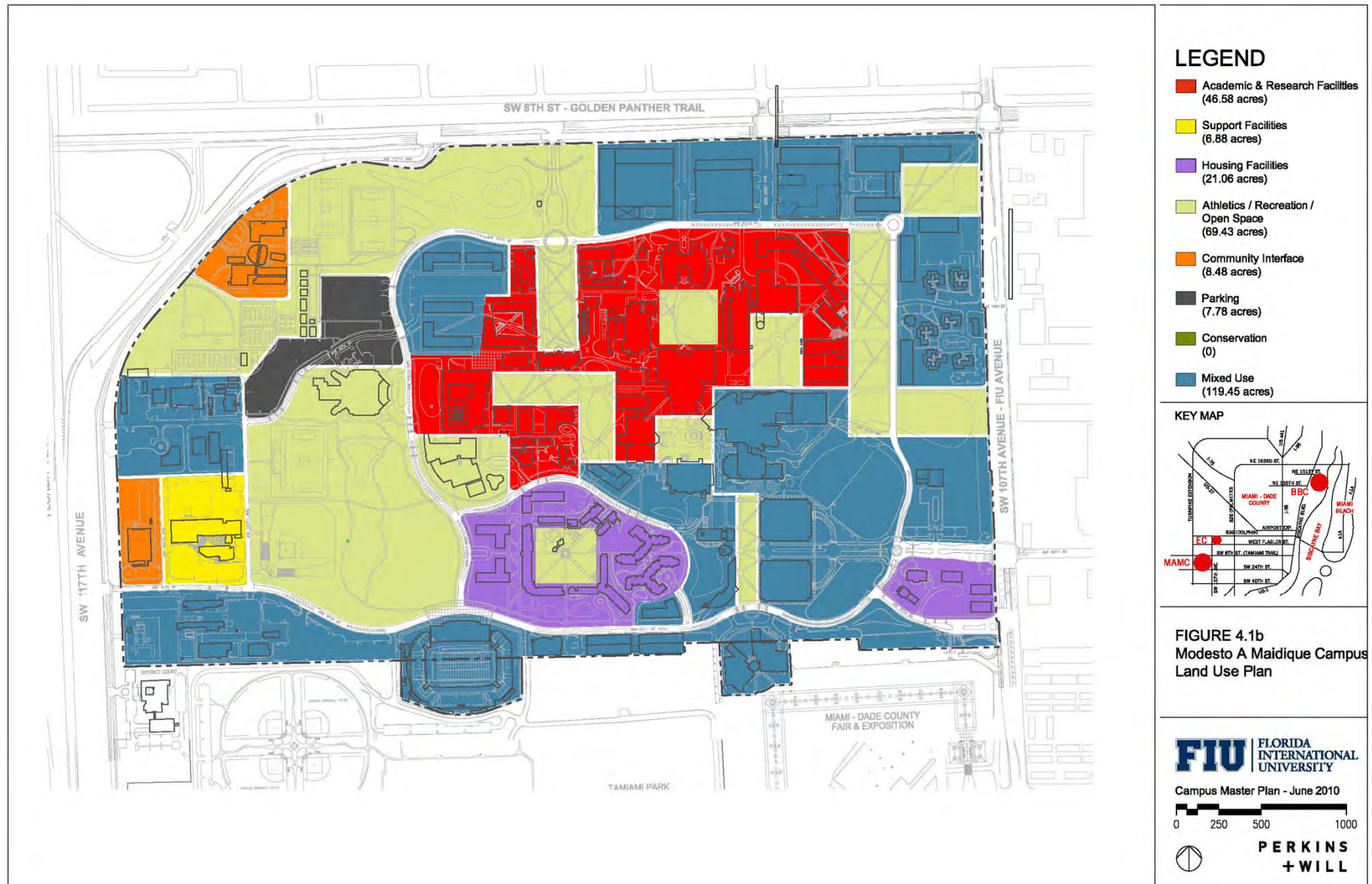
Key Issues that are important to You - information to share with group; Studies or Initiatives underway that would be helpful to incorporate in master plan – 15 minutes

- **What has changed in strategic direction from the last campus plan?**
- **Facilities inventory – we've received**
- **Need: Property targeted for acquisition, partnership or lease**
- **Need: A map/drawing of all existing encumbrances to FIU property**
- **Need: A map/drawing of existing registered natural, archeological and historic resources within FIU property**
- **Need: A map/drawing of facilities on FIU property that are not under the jurisdiction or operation of the State University System**
- **Need: Inventory of significant natural features on University property within the coastal area**
- **Need: Inventory of on-campus estuarine conditions, existing beach and dune systems, public access facilities, and identification of the coastal high hazard area**

Confirm Best Practices from other universities or communities – 10 minutes

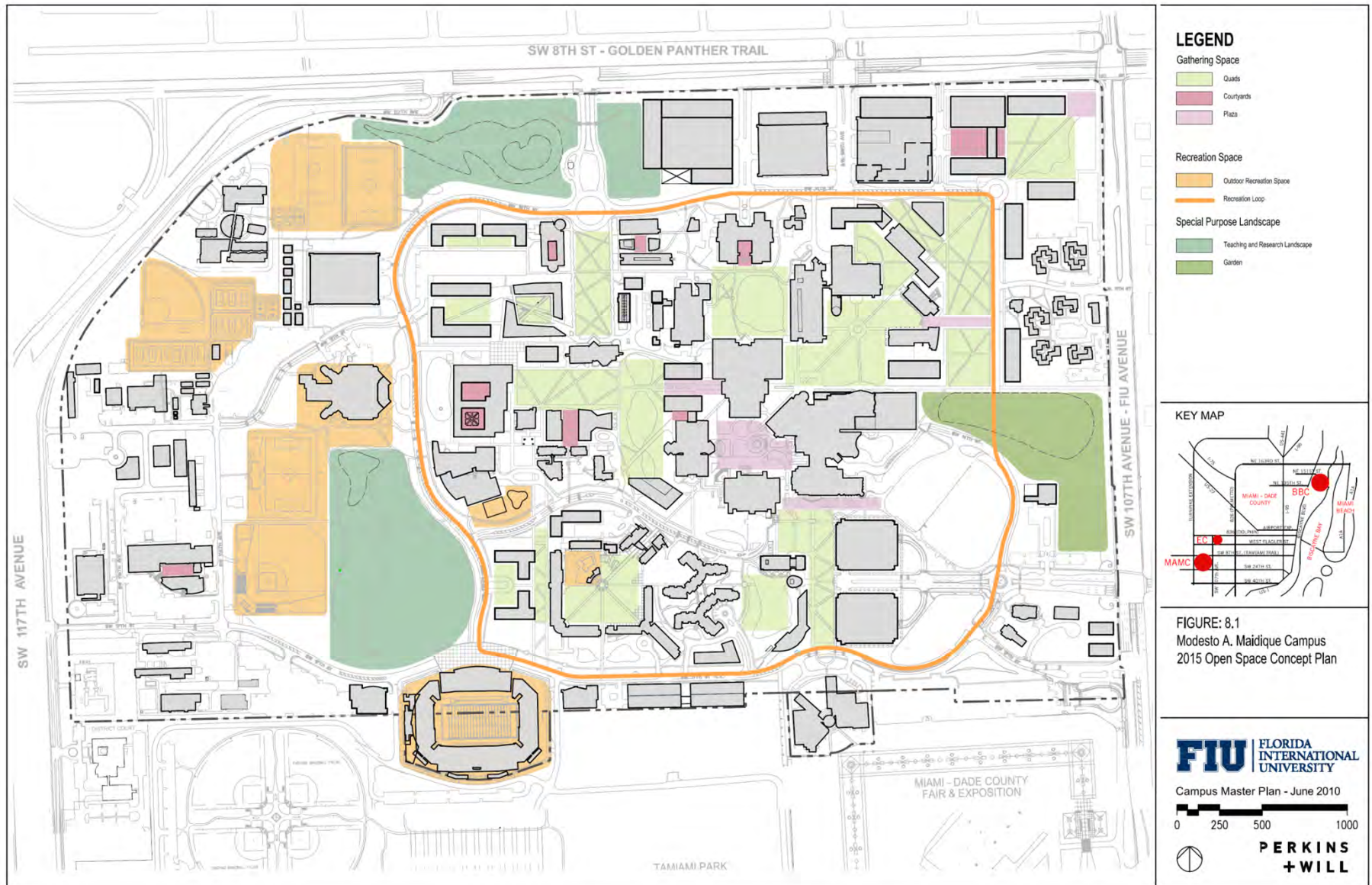
Modesto A. Maidique Campus

Land Use



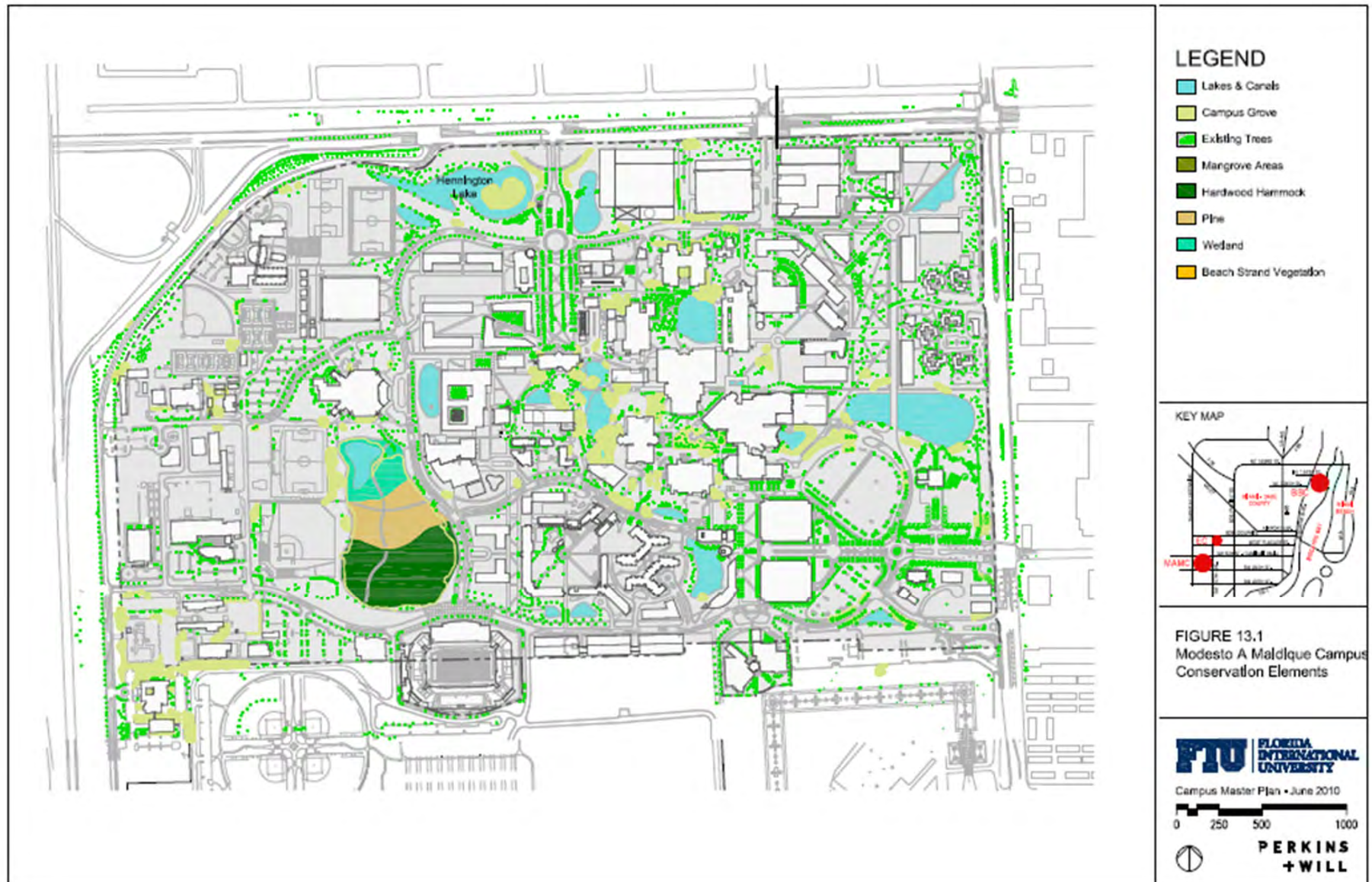
Modesto A. Maidique Campus

Open Space Concept Plan



Modesto A. Maidique Campus

Conservation Elements

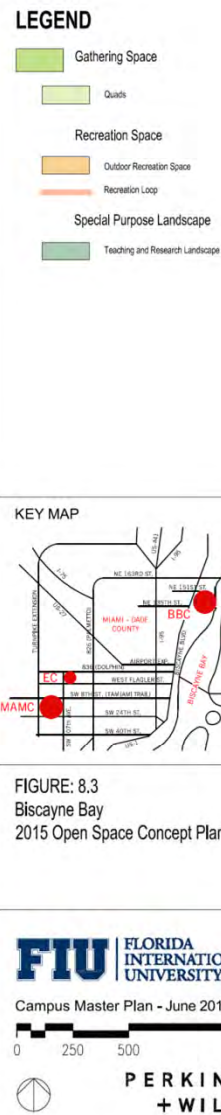


Biscayne Bay

Land Use



Open Space Concept Plan



Biscayne Bay

Conservation Elements



Engineering Center

Land Use



LEGEND

- Academic & Research Facilities
(12.25 acres)
- Support Facilities
(3.45 acres)
- Housing Facilities
(0 acres)
- Athletics / Recreation /
Open Space
(3.54 acres)
- Community Interface
(0 acres)
- Parking
(0 acres)
- Conservation
(0 acres)
- Mixed Use
(11.77 acres)

KEY MAP

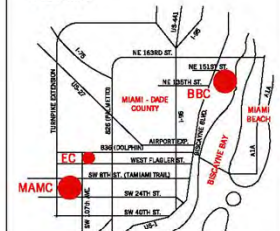


FIGURE 4.2b
Engineering Center
Land Use Plan

FIU | FLORIDA
INTERNATIONAL
UNIVERSITY

Campus Master Plan - June 2010

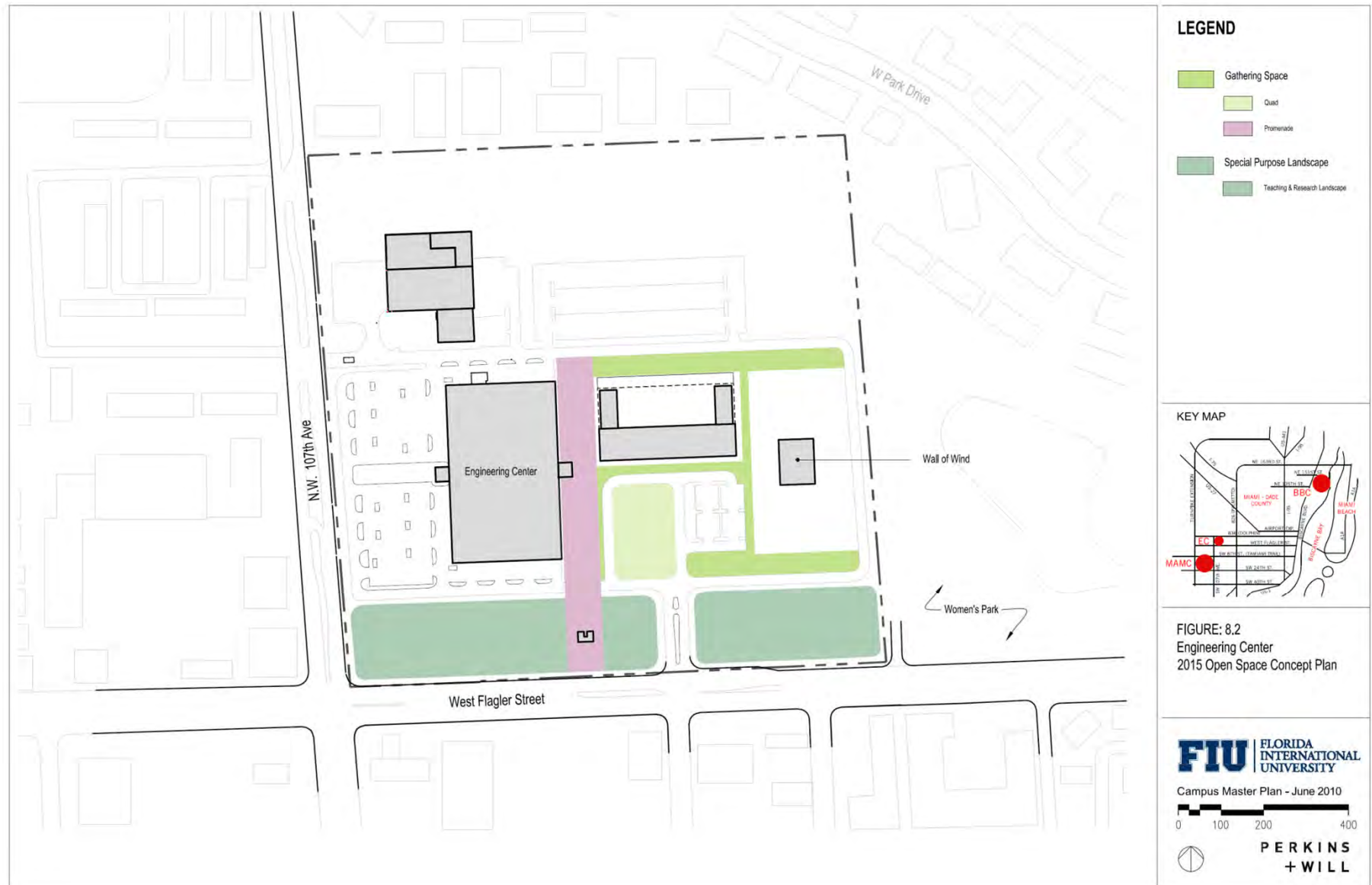
0 100 200 400



**PERKINS
+ WILL**

Engineering Center

Open Space Concept Plan



Engineering Center

Conservation Elements



LEGEND

- Campus Grove
- Existing Trees
- Campus Park

KEY MAP



FIGURE 13.2
Engineering Center
Conservation Elements

FTU FLORIDA
INTERNATIONAL
UNIVERSITY

Campus Master Plan • June 2010

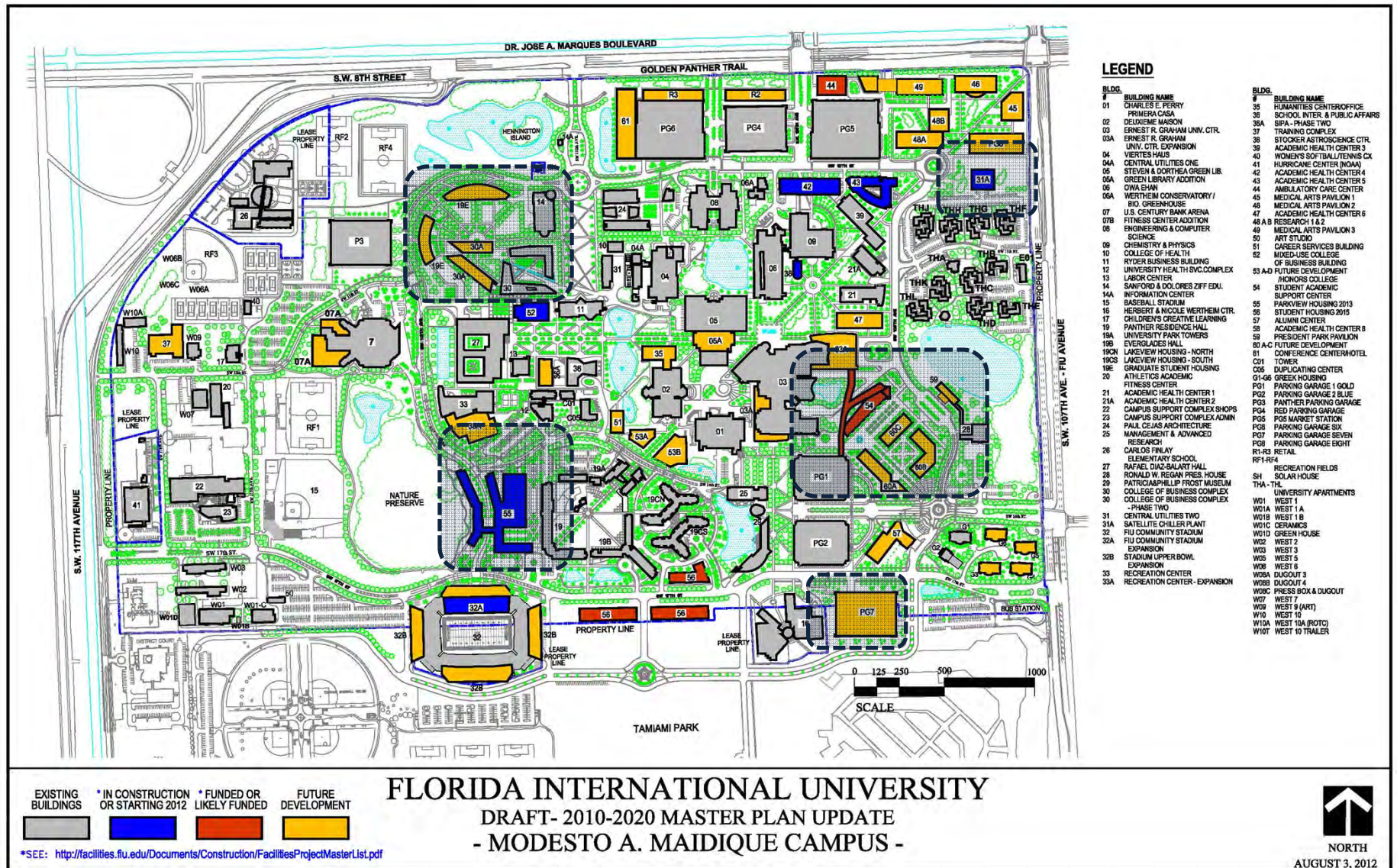
0 100 200 400



**PERKINS
+ WILL**

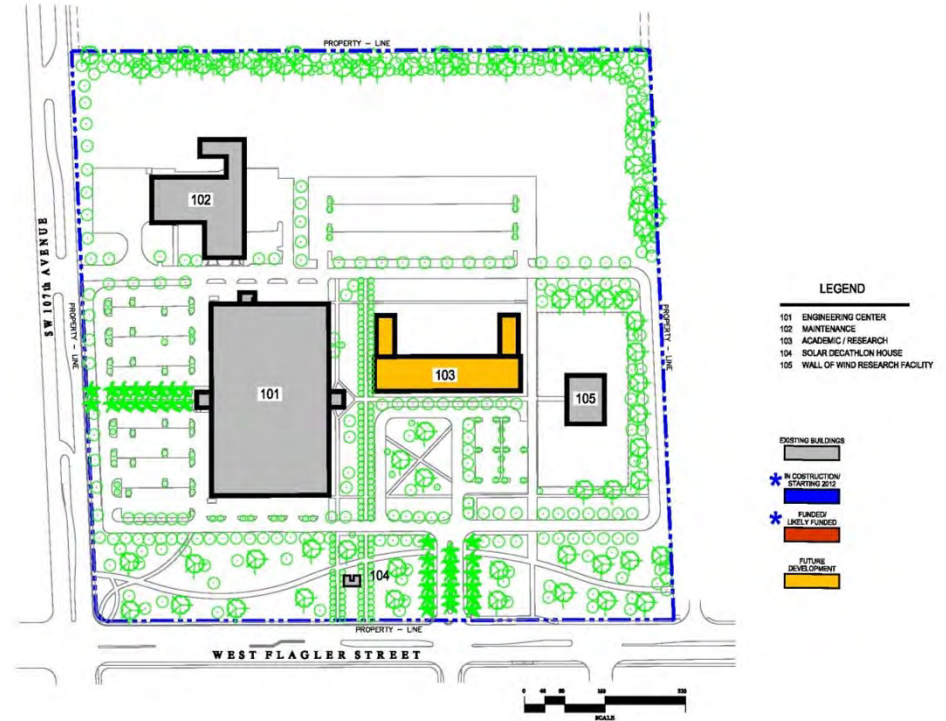
Modesto Maidique Campus

UPDATES SINCE 2010



Biscayne Bay Campus / Engineering Center

UPDATES SINCE 2010



S.W.O.T. Analysis

Focus Group 2

Friday, August 31th, 9:30AM - 11:30AM

Group 2 Open Space, Recreation, Land Use, Conservation & Coastal Management

- Discuss university strengths, weaknesses, opportunities and threats – 30 minutes

Next Steps

Focus Group 2

Friday, August 31th, 9:30AM - 11:30AM

Group 2 Open Space, Recreation, Land Use, Conservation & Coastal Management

- **Next Steps: Assign Homework – 10 minutes**
- **Provide 5 images of campus strengths, 5 images of campus weaknesses and a description of why, relative to the elements each group represents. As well as best practices from other Universities or places that you've experienced relative to the elements each group represents.**