



FLORIDA
INTERNATIONAL
UNIVERSITY

FLORIDA INTERNATIONAL UNIVERSITY

CAMPUS MASTER PLAN UPDATE 2010-2020

Work Session #2

03 OCTOBER 2012

PERKINS+WILL



FLORIDA
INTERNATIONAL
UNIVERSITY

FOCUS GROUP 4

Focus Group 4

Group 4 Housing, Support Facilities & Student Life Elements - Agenda:

- Assembly/Introductions: 5 minutes
- Confirmation of Campus Master Plan process, project schedule, and meetings: 5 minutes
- Review and discussion of homework assignment, University strengths and weaknesses: 15 minutes
- Review of enrollment, degree programs, research and clinical projections: 45 minutes
- Review of future building, open space and infrastructure needs: 45 minutes
- Next Steps: 5 minutes

Master Planning Schedule

Inventory & Analysis	July-Oct 2012
Preliminary Alternative Concepts	Nov-Dec 2012
Concept Plan Development	Jan 2013
Draft Comprehensive Master Plan	Feb-July 2013
Final Comprehensive Master Plan	Aug-Dec 2013
BOT Approval of Master Plan	Dec 2013

Planning Precedents / Best Practices

Club and intramural courts and fields increase to meet demand:

- **Basketball / Softball**
- **Tennis**
- **Lacrosse / Rugby**
- **Soccer**

Rec. Center facilities and “play space” expand simultaneously with on-campus housing growth:

- **First-floor gym space?**
- **Roof-top court/field space?**

New housing models: mixed use with classrooms, retail, dining, recreation and/or parking amenities

- **Parkview Housing with connections to Stadium/Arena and the Preserve**
- **Eco-housing / Environmental studies and research?**
- **Co-curricular centers and theming?**
- **Living-Learning centers and cohort housing?**

New partnerships with providers for off-campus housing: Sweetwater and North Miami development

- **Faculty, grad/research students, married students and South Florida students.**

New Greek Housing Models: Duplex models or residential hall solutions

- **Troy, USF, U of Pittsburgh, Georgia, Arizona, GWU**

Campus Strengths

Facilities



New campus facilities



Campus Strengths

Open Space



Landscape enhances entry into campus



Campus Strengths

Circulation + Parking



Ample surface parking at BBC



Campus Issues / Opportunities

Facilities



Improve student housing



Repair of existing covered walkways

Campus Issues / Opportunities

Open Space



Needed improvements and expanded outdoor recreational facilities

Needed re-grading and repairs to soccer field

Enrollment and Space Needs Assumptions by Campus

Overall University Enrollment Assumptions

University Enrollment By Campus	CURRENT (2011)		2015		2020		2035 (Strategic plan)	
	HC	FTE	HC	FTE	HC	FTE	HC	FTE
MMC-Total								
Enrollment	33,199	19,417	36,084	22,139	37,719	24,650	48,750	34,339
Undergraduate	27,662	15,412	29,816	17,461	31,004	19,489	40,078	27,726
Graduate	5,537	4,005	6,268	4,678	6,715	5,161	8,672	6,613
BBC- Total								
Enrollment	7,273	2,895	7,838	3,267	9,055	3,906	16,000	5,238
Undergraduate	6,713	2,606	7,236	2,950	8,359	3,526	14,769	4,743
Graduate	560	289	602	317	696	380	1,231	495
EEC Total								
Enrollment	2,456	1,055	2,647	1,188	2,918	1,379	3,552	1,894
Undergraduate	1,942	864	2,093	979	2,302	1,137	2,799	1,569
Graduate	514	191	554	209	616	242	753	325
On-Line Total								
Enrollment	14,998	5,985	16,166	6,742	22,707	9,742	31,318	11,326
Undergraduate	13,202	4,997	14,230	5,663	19,996	8,182	27,582	9,516
Graduate	1,796	988	1,936	1,079	2,711	1,560	3,736	1,810
University Total	57,926	29,352	62,735	33,336	72,399	39,677	99,620	52,797

Key Assumptions/Observations:

- HC includes attendance by one student at multiple venues
- %FTE vs HC does not increase substantively
- Aggressive growth continues, nearly doubling face to face FTE
- E-learning increases from roughly 1/4 to 1/3 total HC; FTE increase less dramatic
- Continued growth on all campuses – proportional to existing distribution

Modesto Maidique – Housing Assumptions

12% Capture Rate

			2015	2020	2035 (Strategic plan)
		BED COUNTS			
		% of FTE housed on campus			
Total number of Beds					
836		39%	1200	1200	1566
693		37%	654	654	845
885		8%	1119	1119	1430
172		4%	217	217	280
x		#VALUE!	x	x	x
2586		13%	3190	3190	4121
			Total		

20% Capture Rate

			2015	2020	2035 (Strategic plan)
		BED COUNTS			
		% of FTE housed on campus			
Total number of Beds					
836		39%	1200	1200	1860
693		37%	642	846	990
885		8%	1953	2174	3029
172		4%	633	710	989
x		#VALUE!	x	x	x
2586		13%	4428	4930	6868
			Total		

Biscayne Bay – Housing Assumptions

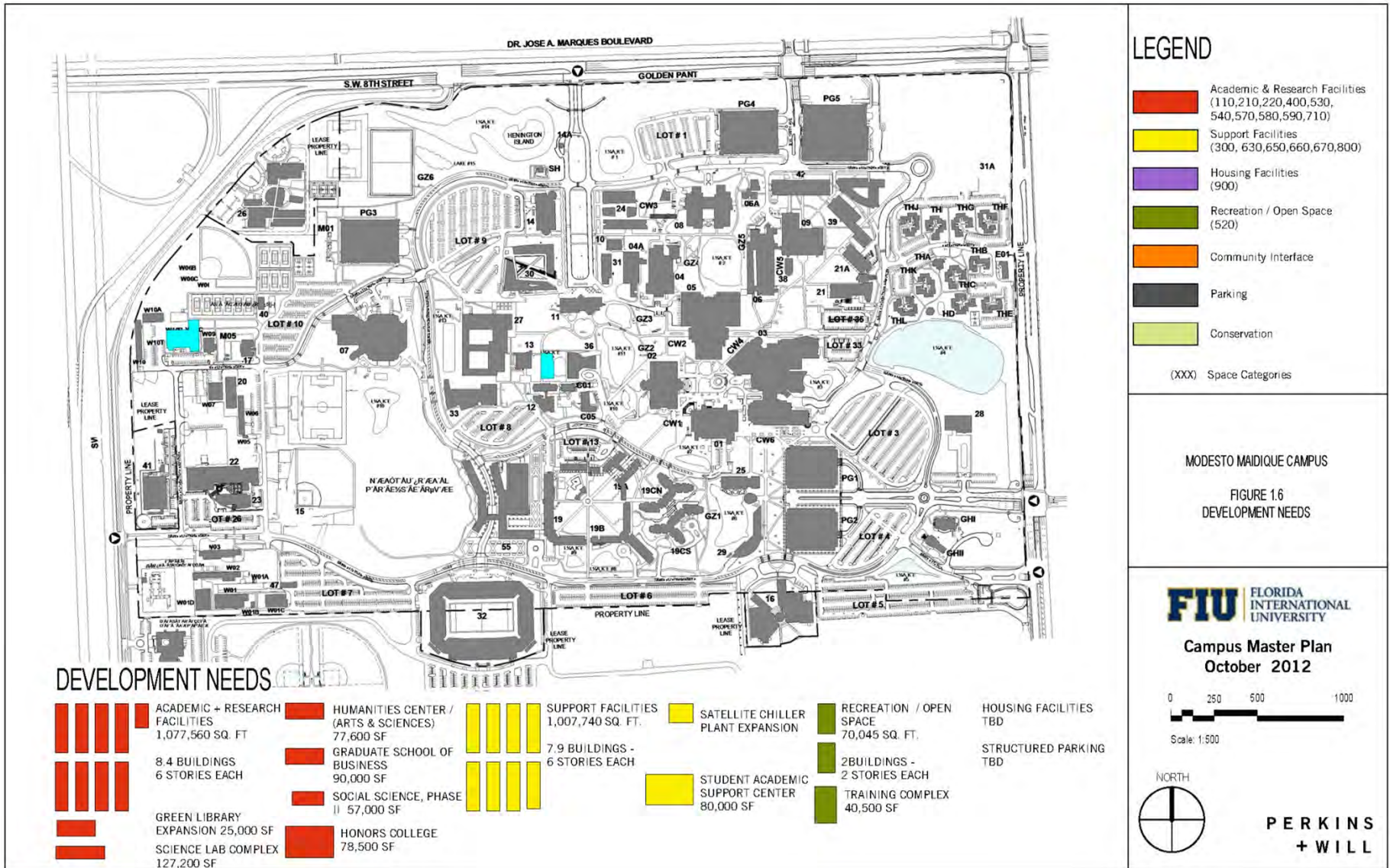
12% Capture Rate

						2015	2020	2035 (Strategic plan)
		BED COUNTS				Target Bed Counts		
		% of FTE housed on campus		Students by year				
Total number of Beds								
74		20%		First Year		107	128	171
38		12%		Second Year		56	66	90
121		6%		Upper Division		173	207	277
38		13%		Graduate		56	68	91
x		#VALUE!		Married		x	x	x
271		9%		Total		392	469	629

20% Capture Rate

						2015	2020	2035 (Strategic plan)
		BED COUNTS				Target Bed Counts		
		% of FTE housed on campus		Students by year				
Total number of Beds								
74		20%		First Year		178	212	285
38		12%		Second Year		93	112	150
121		6%		Upper Division		288	344	462
38		13%		Graduate		94	113	151
x		#VALUE!		Married		x	x	x
271		9%		Total		653	781	1048

Modesto Maidique- Development Needs Diagram



LEGEND

- Academic & Research Facilities (110,210,220,400,530, 540,570,580,590,710)
- Support Facilities (300, 630,650,660,670,800)
- Housing Facilities (900)
- Recreation / Open Space (520)
- Community Interface
- Parking
- Conservation

(XXX) Space Categories

MODESTO MAIDIQUE CAMPUS
FIGURE 1.6
DEVELOPMENT NEEDS

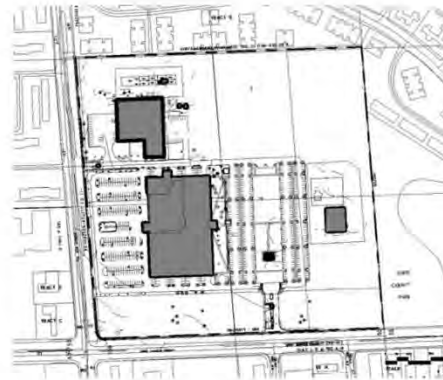
FIU FLORIDA INTERNATIONAL UNIVERSITY
Campus Master Plan
October 2012

0 250 500 1000
Scale: 1:500

NORTH

PERKINS + WILL

Engineering Center Campus- Development Needs Diagram



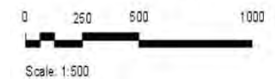
LEGEND

- Academic & Research Facilities
(110,210,220,400,530,
540,570,580,590,710)
 - Support Facilities
(300, 630,650,660,670,800)
 - Housing Facilities
(900)
 - Recreation / Open Space
(520)
 - Community Interface
 - Parking
 - Conservation
- (XXX) Space Categories

ENGINEERING CENTER CAMPUS
FIGURE 2.3
DEVELOPMENT NEEDS

FIU FLORIDA
INTERNATIONAL
UNIVERSITY

Campus Master Plan
October 2012



**PERKINS
+ WILL**

DEVELOPMENT NEEDS

ACADEMIC + RESEARCH FACILITIES
NO ADDITIONAL SPACE NEEDED

ENGINEERING BUILDING
27,840 SF

SUPPORT FACILITIES
22,000 SQ. FT.

0.2 BUILDINGS - 1 STORY

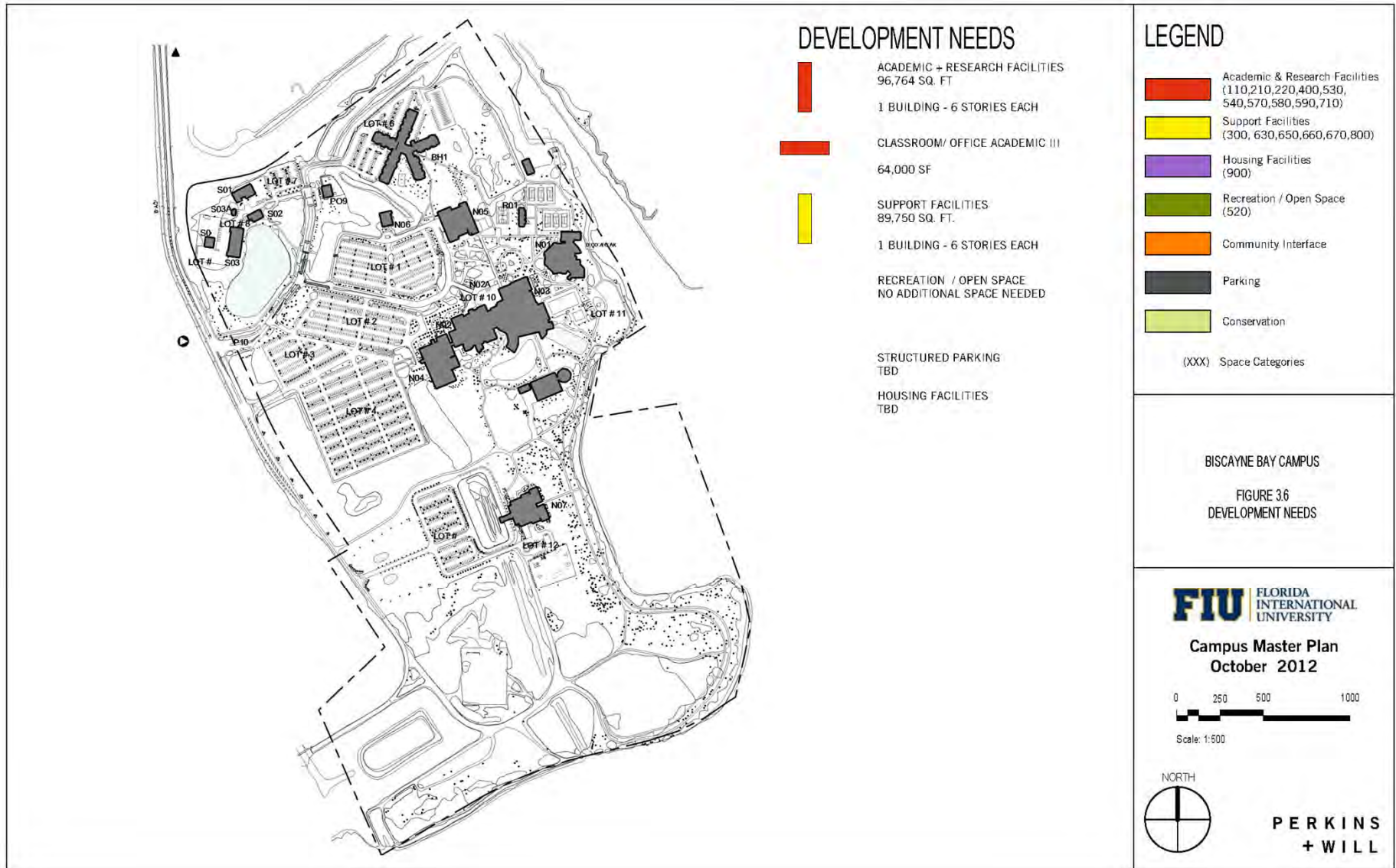
RECREATION / OPEN SPACE
3,200 SQ. FT.

0.1 BUILDING - 1 STORY

HOUSING FACILITIES
TBD

STRUCTURED PARKING
TBD

Biscayne Bay- Development Needs Diagram



DEVELOPMENT NEEDS

- ACADEMIC + RESEARCH FACILITIES
96,764 SQ. FT.
1 BUILDING - 6 STORIES EACH
- CLASSROOM/ OFFICE ACADEMIC III
64,000 SF
- SUPPORT FACILITIES
89,750 SQ. FT.
1 BUILDING - 6 STORIES EACH
- RECREATION / OPEN SPACE
NO ADDITIONAL SPACE NEEDED
- STRUCTURED PARKING
TBD
- HOUSING FACILITIES
TBD

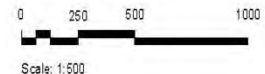
LEGEND

- Academic & Research Facilities
(110,210,220,400,530,540,570,580,590,710)
- Support Facilities
(300, 630,650,660,670,800)
- Housing Facilities
(900)
- Recreation / Open Space
(520)
- Community Interface
- Parking
- Conservation
- (XXX) Space Categories

BISCAYNE BAY CAMPUS
FIGURE 3.6
DEVELOPMENT NEEDS



Campus Master Plan
October 2012



PERKINS
+ WILL

Potential Land Use and Development Zones

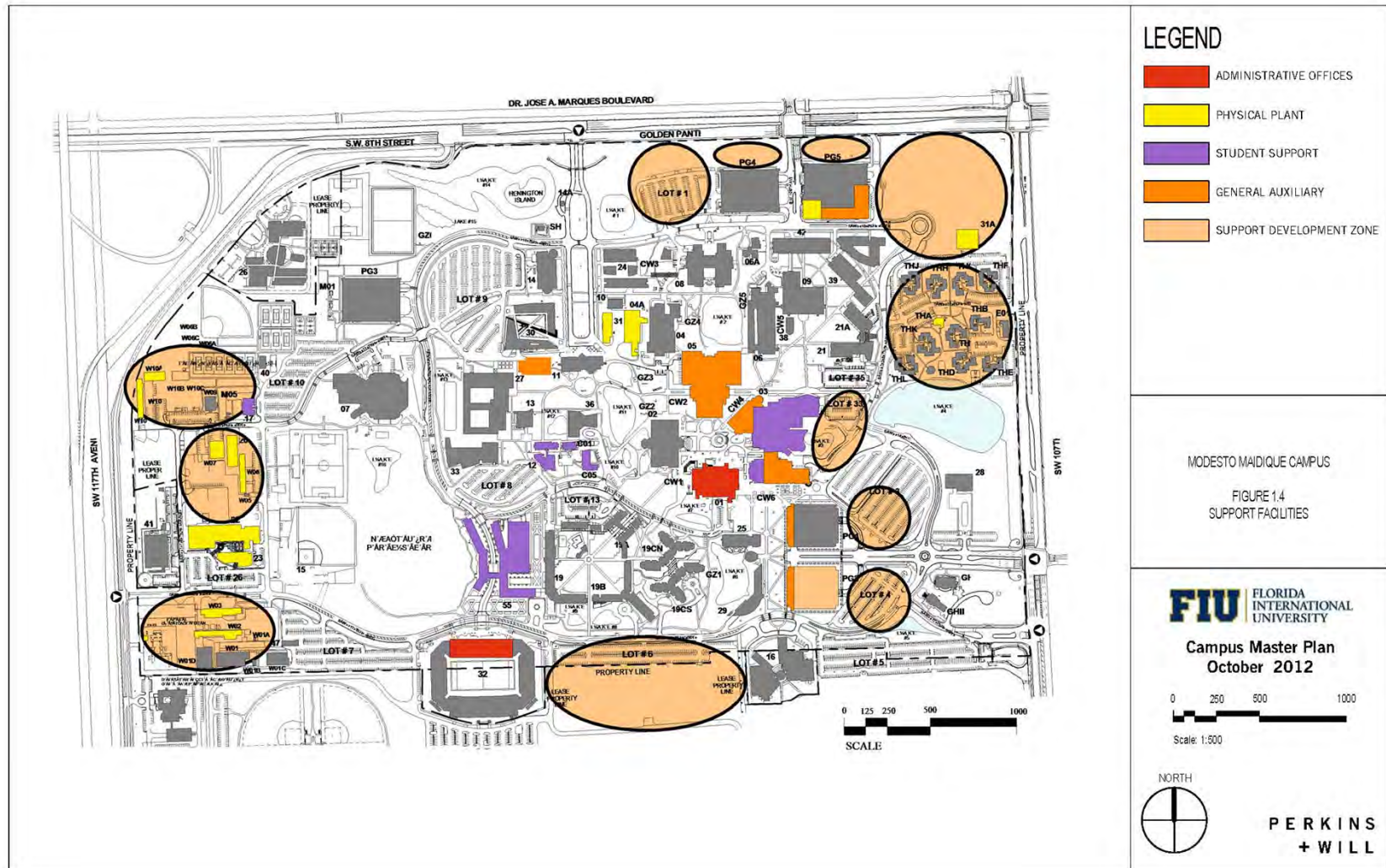
Modesto Maidique Campus

Existing Land Uses

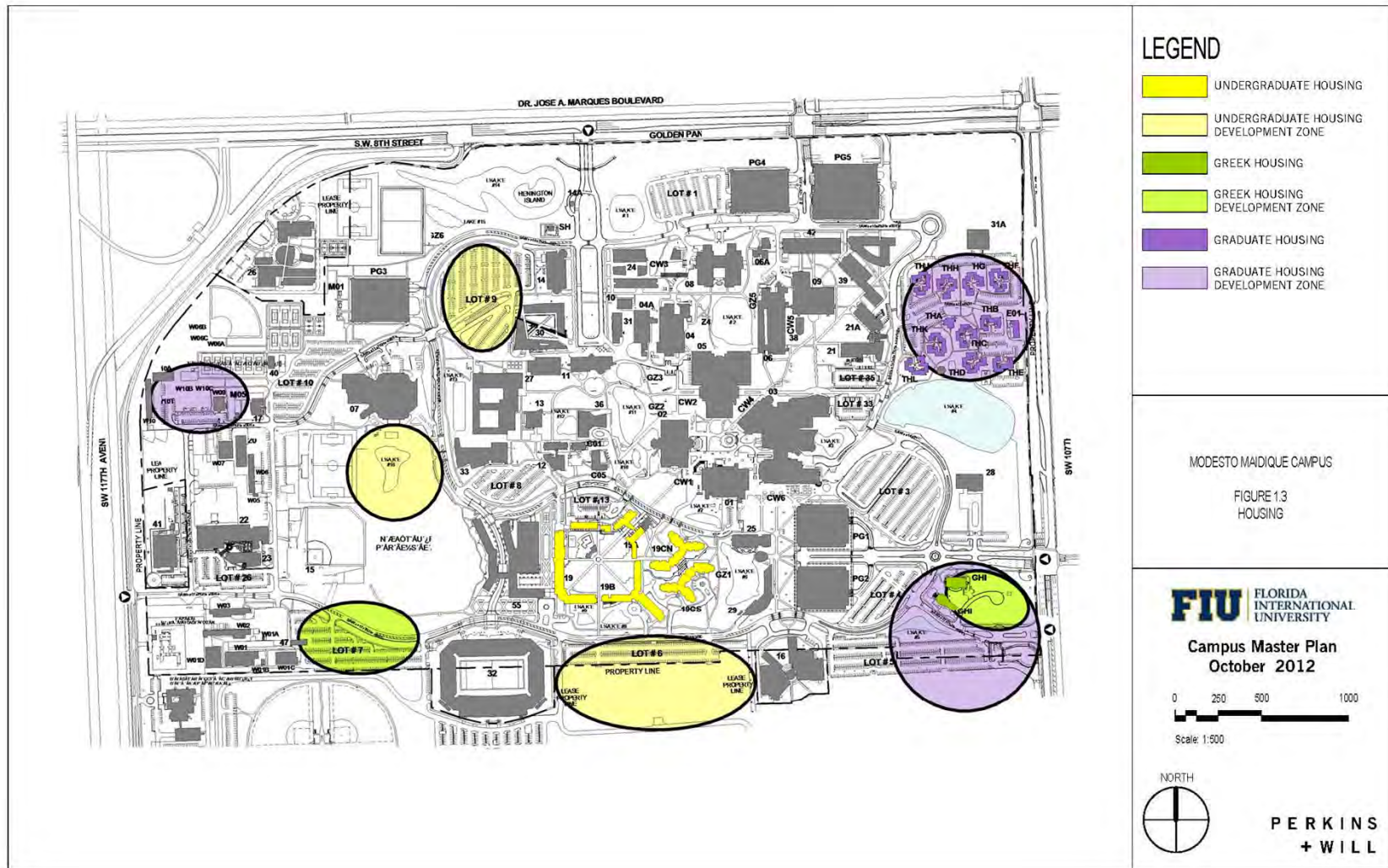


- key:
- axis
 - academic & research
 - student life & housing
 - support & infrastructure
 - recreation & culture
 - parking

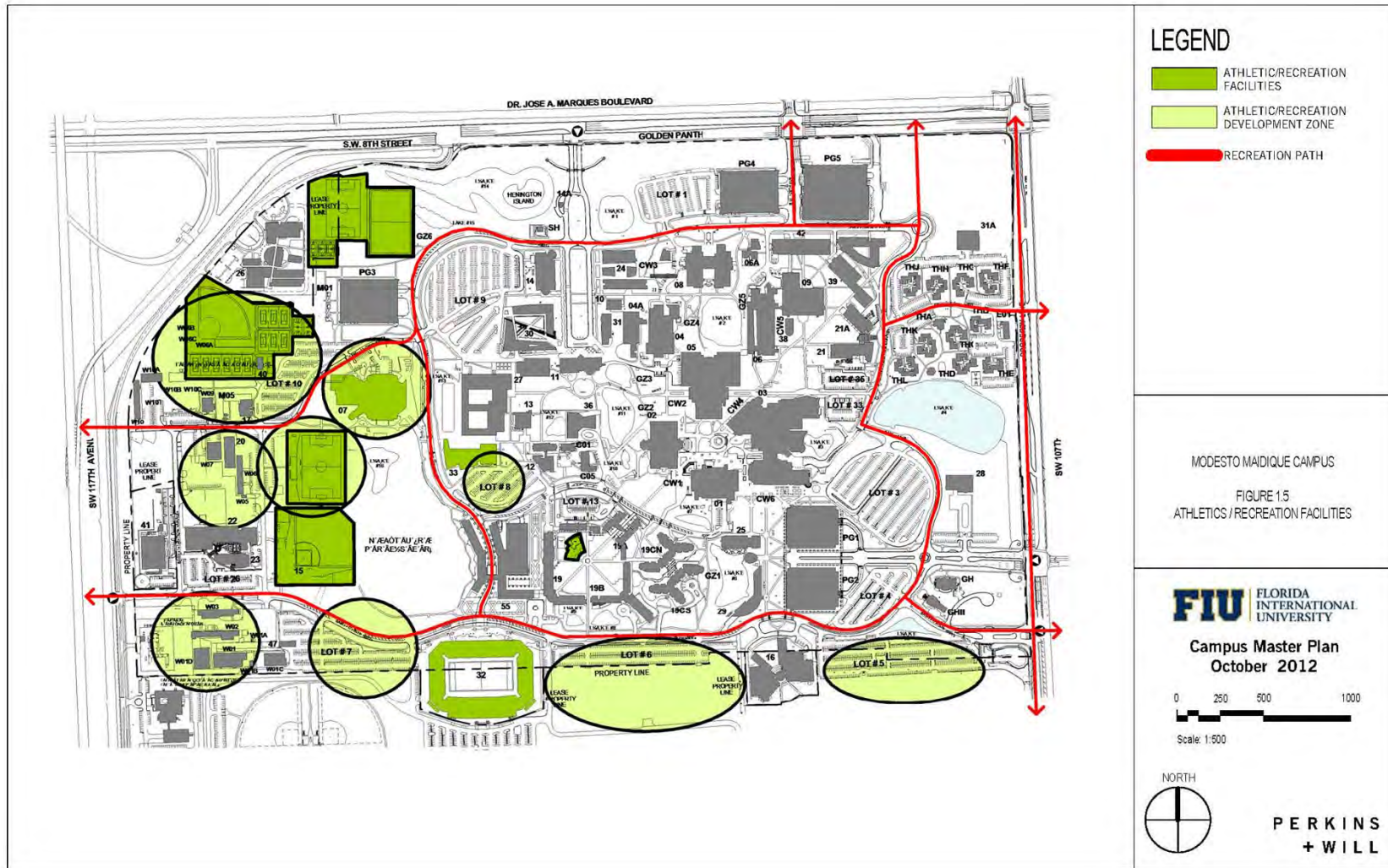
Potential Student Life/Support Development Zones



Potential Housing Development Zones

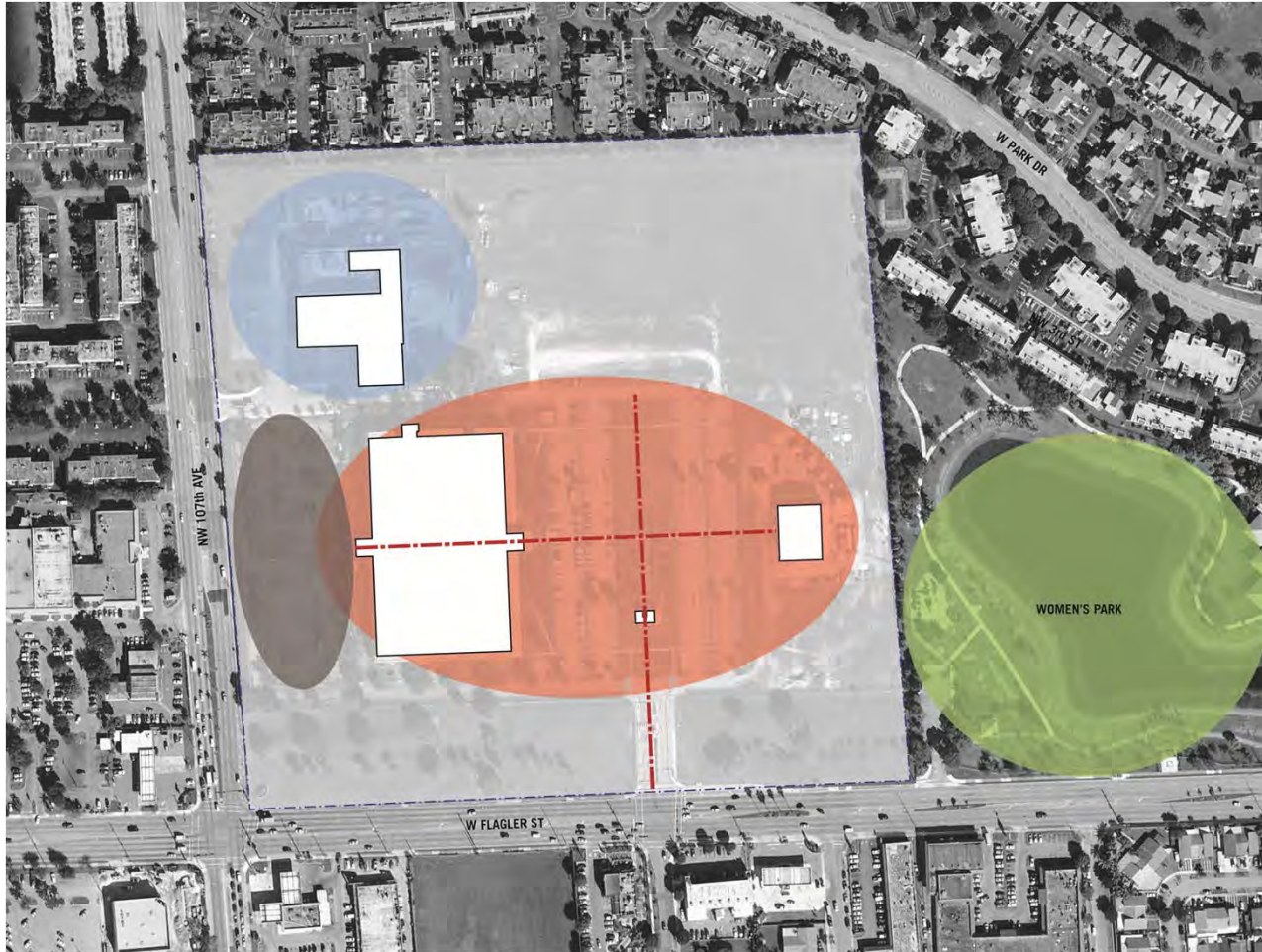


Potential Athletics/ Recreation Development Zones



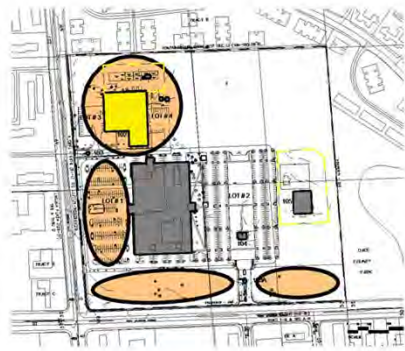
Engineering Center

Existing Land Uses



- key:
- · — axis
 - academic & research
 - student life & housing
 - support & infrastructure
 - recreation & culture
 - parking

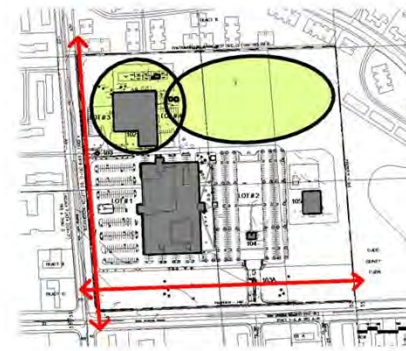
Potential Support/ Athletics- Recreation Zones



① ENGINEERING CENTER CAMPUS-SUPPORT FACILITIES
1"=500

LEGEND

- ADMINISTRATIVE OFFICES
- PHYSICAL PLANT
- STUDENT SUPPORT
- GENERAL AUXILIARY
- SUPPORT DEVELOPMENT ZONE



② ENGINEERING CENTER CAMPUS-ATHLETICS/RECREATION FACILITIES
1"=500

LEGEND

- ATHLETIC/RECREATION FACILITIES
- ATHLETIC/RECREATION DEVELOPMENT ZONE
- RECREATION PATH

ENGINEERING CENTER CAMPUS

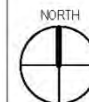
FIGURE 2.2
SUPPORT FACILITIES +
ATHLETICS / RECREATION FACILITIES

FIU FLORIDA
INTERNATIONAL
UNIVERSITY

Campus Master Plan
October 2012

0 250 500 1000

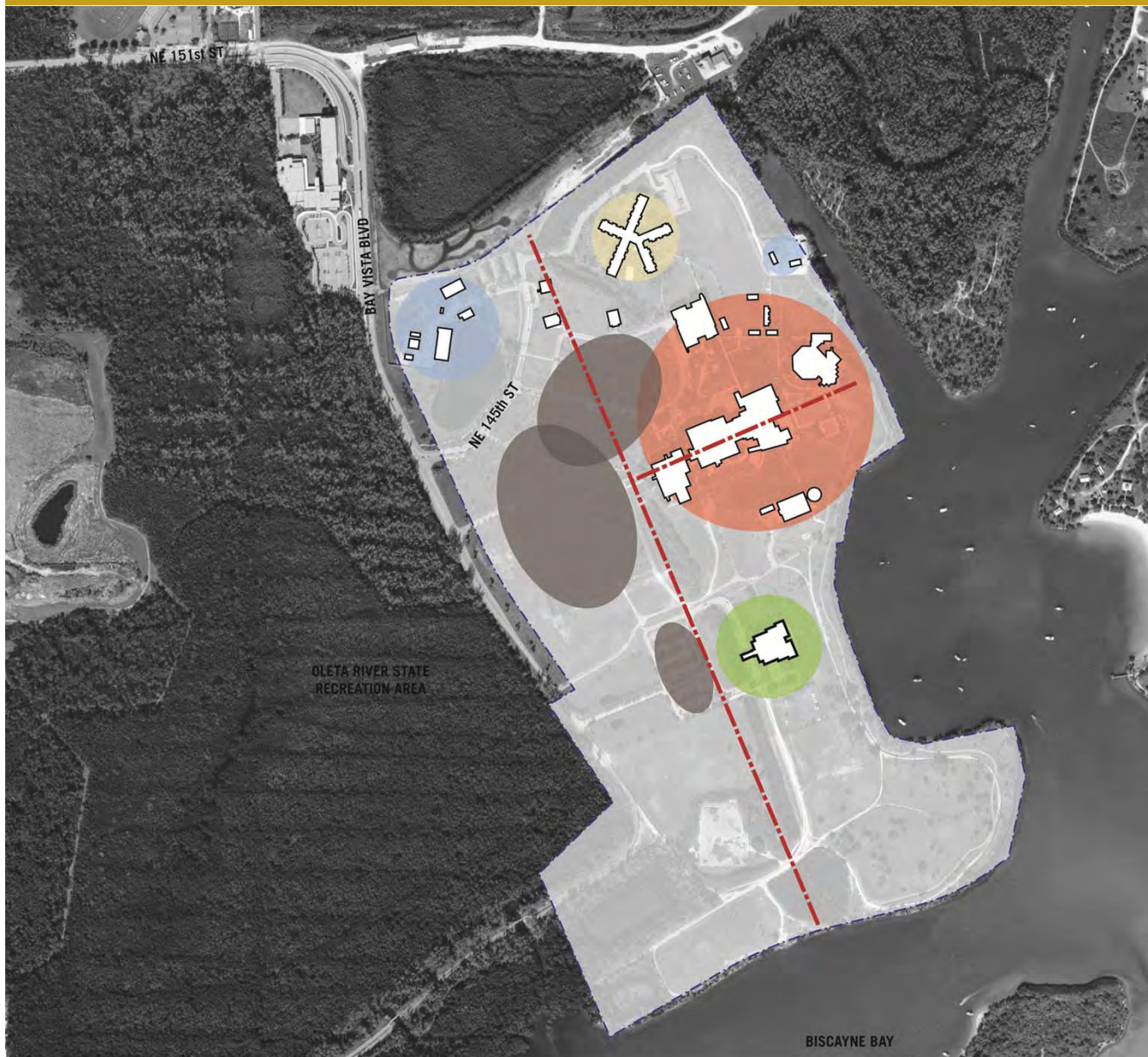
Scale: 1:500



PERKINS
+ WILL

Biscayne Bay Campus

Existing Land Uses



- key:
- axis
 - academic & research
 - student life & housing
 - support & infrastructure
 - recreation & culture
 - parking

Potential Student Life/Support Development Zones



Potential Housing Development Zones



Potential Athletics/Recreation Development Zones



Next Steps

-Next Steps

- Faculty/Staff Assumptions**
- Research Assumptions**
- Clinical Assumptions**

- Touchstone Meeting – end of October?**

- Concept Themes**
 - Maximize programs at Modesto Maidique Campus**
 - Create “E” center at Biscayne Bay Campus for Education and Environmental Studies**
 - Maximize perimeter partnerships**
 - Other?**