

Steering Committee Charter

FIU Campus Master Plan Update 2010-2020 (CMP 2020)

President Rosenberg's Charge

"FIU's built environment is special. Over the next few years, we will have significant opportunities to improve it even more as we update our Campus Master Plan. The Campus Master Plan guides the physical development of our campuses over a 10 year planning period. This plan will create a bold vision for the physical development of our campuses by incorporating planned land uses, buildings, open spaces, places to live, study and work, motorized vehicle and pedestrian circulation, recreational spaces, and necessary supporting infrastructure. Importantly, the plan will integrate these uses in a way that will support our strategic plan while carefully reflecting issues of student centered learning, sustainability, way finding and circulation, architecture, and landscape to help FIU meet its mission. With the completion of FIU's 2010-15 Worlds Ahead Strategic Plan as our guide, I believe the 2010-20 Campus Master Plan Update will be the most important one we have undertaken.

The purpose of the committee is to provide oversight and direction to our master plan consultants, Perkins & Will, helping to ensure that there is broad-based participation and engagement by our various stakeholders and constituencies during the planning process. The committee will be chaired by Javier I. Marqués, Chief of Staff. I anticipate that there will be approximately six meetings over the course of the year. I appreciate your willingness to serve on this very important committee and assisting FIU in developing a comprehensive approach to our future."

A. Purpose of the Steering Committee - Primary Functions

The primary function of the Steering Committee is to provide senior university leadership guidance to help fulfill the president's charge as stated above. The committee will ensure that university leadership is engaged in the planning process and is given timely and appropriate involvement in its preparation.

It is intended that the Steering Committee leverage the experiences, expertise, and insight of key individuals committed to building professionalism in this project. Steering Committee members are not directly responsible for managing the CMP2020 project activities, but provide support and guidance for those who do.

The Steering Committee provides a stabilizing influence over planning concepts which may have competing interests so that direction is established and maintained. The Steering Committee provides insight on long-term strategies in support of State and local mandates as well as the best interests of FIU and the host community. Members of the Steering Committee will ensure CMP 2020 objectives are adequately addressed and the planning process remains on task and under control.

Select focus groups identified in Section D will be assigned to specific target areas of the CMP 2020. The target areas cover all of the elements of the CMP 2020 grouped by elements most closely related to one another. Focus group members are assigned based on their area of expertise and representative area of responsibility. Steering Committee members may personally participate in focus groups or assign others to represent their respective areas of interest.

Thus, individually, Steering Committee members should:

- Understand the strategic implications and outcomes of initiatives being pursued;
- Appreciate the significance of the CMP2020 for some or all major stakeholders and represent their interests;
- Have a broad understanding of campus planning issues and approach being adopted.

Collectively the CMP 2020 Steering Committee will:

- Monitor and review the CMP 2020 scope during the planning process as emergent issues surface that could force changes to be considered, (e.g., acquisition of the Fair property, secondary vehicular access to BBC, TIGER Grant implications to MMC & Sweetwater);
- Help balance conflicting priorities and resources;
- Lead and assign staff to participate in select focus groups;
- Ensure the scope and outcomes align with objectives key resource owners/operators and key stakeholder focus groups;
- Provide guidance to FMD and the team of planning consultants;
- Consider all ideas and issues raised;
- Evaluate standards of best practices both within the organization and in a wider context;
- Foster positive communication outside of the Steering Committee regarding progress and outcomes;
- Formally review project deliverables identified in the task and milestone schedule.

B. Scope of the CMP 2020

The 2010-2020 Campus Master Plan Update will be prepared in two documents: a Supporting Inventory and Analysis document and a Final Campus Master Plan document containing Goals, Objectives and Policies. The Supporting Inventory and Analysis document will contain an analysis of existing conditions, while the Final Campus Master Plan document will contain maps required to depict planned future conditions.

The Goals, Objectives and Policies will be the primary mechanism for the implementation of the Campus Master Plan through the 2020 planning horizon. Requirements for Capital Improvements Implementation will be contained in the Capital Improvements Element. Procedures for monitoring, evaluation and amendment of the campus master plan will be contained in the various plan elements.

The process of preparing the campus master plan will reflect and respond to input and interaction from various segments of the University Community. Multiple meetings and workshops will be held at each stage of the planning process, culminating in the plans presentation to, and endorsement by, the University Board of Trustees.

The draft final master plan will be subject to a lengthy process of external review. The draft plan will be issued to Miami-Dade County, the City of North Miami, the Town of Sweetwater, the regional planning council and water management district, the State Land Management Advisory Council and a number of state agencies prior to adoption. The plan will be available for review by the general public and two duly noticed public hearings will be conducted to solicit public input on the draft plan.

The Steering Committee will be responsible for recommendations and guidance with respect to specific elements of the plan. This includes 8 elements required by statute and 10 elements required by FIU:

- 1.0 ACADEMIC MISSION OF THE UNIVERSITY (FIU required)
- 2.0 ACADEMIC PROGRAM ELEMENT (FIU required)
- 3.0 URBAN DESIGN ELEMENT (FIU required)
- 4.0 FUTURE LAND USE ELEMENT (required by statute)
- 5.0 ACADEMIC AND RESEARCH FACILITIES ELEMENT (FIU required)
- 6.0 SUPPORT FACILITIES ELEMENT (FIU required)
- 7.0 HOUSING ELEMENT (required by statute)
- 8.0 RECREATION AND OPEN SPACE ELEMENT (required by statute)
- 9.0 GENERAL INFRASTRUCTURE ELEMENT (required by statute)
- 10.0 UTILITIES ELEMENT (FIU required)
- 11.0 TRANSPORTATION ELEMENT (required by statute)
- 12.0 INTERGOVERNMENTAL COORDINATION ELEMENT (required by statute)
- 13.0 CONSERVATION ELEMENT (required by statute)
- 14.0 CAPITAL IMPROVEMENTS ELEMENT (required by statute)
- 15.0 ARCHITECTURAL GUIDELINES ELEMENT (FIU required)
- 16.0 LANDSCAPE DESIGN GUIDELINES ELEMENT (FIU required)
- 17.0 FACILITIES MAINTENANCE ELEMENT (FIU required)
- 18.0 COASTAL MANAGEMENT ELEMENT (FIU required)

C. Steering Committee Membership

In addition to the Facilities Management Associate Vice President and Director of Planning as *ex-officio* members, the Steering Committee will consist of the following stakeholder members:

Name	Title	Division/Organizational unit
Javier I. Marqués	Chief of Staff, (Chairman)	President’s Office
Andres Gil	Vice President	Research
Jeffrey Gonzalez	Associate Vice President	Academic Affairs
Sandra Gonzalez-Levy	Senior Vice President	External relations
Delano Gray	Chair	Faculty Senate
Kenneth Jessell	Senior Vice President & CFO	Financial Affairs
Larry Lunsford	Interim Vice President	Student Affairs
Howard Lipman	Senior Vice President	University Advancement
Amir Mirmiran	Dean	College of Engineering & Computing

Steven Moll	Vice Provost	Biscayne Bay Campus
Stephen Sauls	Vice President	Government Relations
Raul Reis	Dean	School of Journalism & Mass Communication
Laura Farinas	Student Body President	Modesto A. Maidique Campus
Pablo Haspel	Student Body President	Biscayne Bay Campus

D. Recommended Focus Group structure and membership for Steering Committee Consideration

Each focus group will have a designated Steering Committee advocate who represents the interests of the focus group on the Steering Committee. Organizational structure and suggested membership should be reviewed and confirmed by the Steering Committee.

Focus groups may be comprised of Steering Committee members, faculty, staff, students community leaders and others to be designated by the Steering Committee. Focus groups will cover seven specific target areas of the CMP 2020 plan, grouped by element number noted in brackets:

Group 1: Academic mission, academic program & academic and research facilities - [1.0, 2.0, 5.0]

- Jeffrey Gonzalez, Steering Committee Advocate
- Andres Gil (Research)
- Lesley Northup (Honors College)
- Steven Moll (BBC)
- Amir Mirmiran (EC)
- Fernando Valverde (COM)
- Ken Furton (CAS)
- Michele Ciccazzo (CPHSW)
- Jose Rodriguez (AHC)
- Vojkan Dimitrijevic (Finance)
- Jaffus Hardrick (HR)
- Philip Koenig (FIU Student -International Relations)
- Liane Martinez (COM)

Group 2: Open Space, Recreation, Land Use, Conservation and Coastal Management [4.0, 8.0, 13.0, 18.0]

- Steven Moll, Steering Committee Advocate
- Rob Frye (MMC Recreation)
- Carrie Kashar (Sustainability)
- Michael Heithaus (Coastal)
- Joost Nuninga (Maintenance)
- Marta Canaves (Landscape Architecture)

FIU Campus Master Plan Update 2010-2020 - Steering Committee Charter – 3/21/13

- Raul Reis (Journalism)
- Jim Wassenaar (Housing)
- Emilio Colyer (FIU Student-SGA Representative)
- Daniella Bueso (FIU Student-SEAS)

Group 3: Urban, Architectural & Landscape Design Guidelines [3.0, 15.0, 16.0]

- Kenneth Jessell, Steering Committee Advocate
- John Stuart (Architectural Design)
- Adam Drisin (Urban Design)
- Roberto Rovira (Landscape Design)
- Mark Salemi (Landscape Maintenance)
- Marilys Nepomechie (Architecture)
- Oscar Irigoyen (Construction/Architecture)
- Alex Casas (FIU Police Department)
- Marsha McDonald (FIU Student-Architecture)
- Chris Cabeza (FIU Student-Landscape Architecture)

Group 4: Housing, Support facilities & Student Life (Elements 6.0, 7.0, 8.0)

- Larry Lunsford, Steering Committee Advocate
- Jeff Krablin (Business Services)
- Jim Wassenaar (Student Life)
- Cathy Akens (Student Life)
- Rob Frye (Student Life)
- Javier Morales (FIU Student-SGA Representative)

Group 5: Infrastructure, Utilities, Maintenance [9.0, 10.0, 17.0]

- Amir Mirmiran, Steering Committee Advocate
- Nick DiCiaccio (Facilities)
- Bobby Grillo (Information Technology)
- Danny Paan (Construction)
- Jose “Pepe” Solares (FPL Representative)
- Sergio Garcia/ Jose Soto (WASAD)
- Jose Rodriguez (COM)
- Amaris A. Beza (FIU Student-Civil Engineering)
- Devon Barroso (FIU Student-MEP Engineering)

Group 6: Transportation, Parking, Transit, Bicycle & Pedestrian [9.0, 11.0, 12.0]

- Stephen Sauls, Steering Committee Advocate
- Lissette Soto Hernandez (Transportation)
- Aime Martinez (Finance)
- Alex Casas (FIU Police Department)
- Ruben Almaguer (Emergency Management)
- Javier Rodriguez (MDX)
- Robert Herrada (Sweetwater)

- Tanya Wilson-Sejour (North Miami Planning)
- Alberto Delgado (Construction/Architecture)
- Ruben Diaz-Neda (FIU Graduate Student)

Group 7: Inter-governmental Coordination, Advancement, Alumni Affairs [6.0, 9.0 11.0, 12.0]

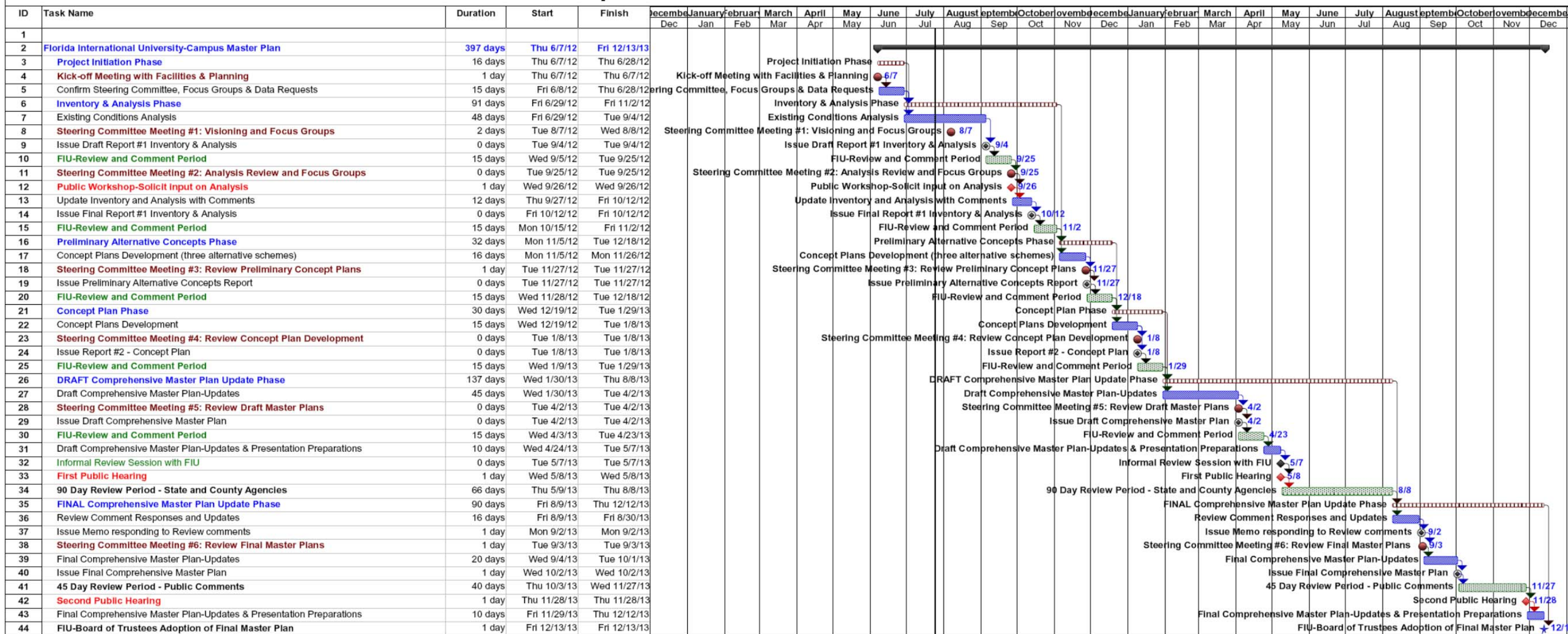
- Sandra Gonzalez-Levy (External Relations) Steering Committee Advocate
- Stephen Sauls (Government Relations)
- Howard Lipman (Advancement)
- Duane Wiles (Alumni Affairs)
- Mayor Maroño (Sweetwater)
- Mayor Pierre (North Miami)
- Mark Woerner/Helen Brown (Miami-Dade)
- John Cal (Facilities Management)
- Pedro Botta (SIPA)
- Pablo Haspel (FIU Graduate Student)

E. Steering Committee Meetings Meeting Schedule and Process

The overall CMP 2020 project schedule is attached along with an extract highlighting the 6 specific meeting dates and 2 pre-hearing meetings for the Steering Committee. The Steering Committee will meet according to the Perkins + Will schedule or as required to keep track of issues and the progress of the CMP2020 as it relates to on-going issues of FIU and community stakeholders. All members of this committee are expected to actively participate. Regular attendance for meetings as well as involvement in special activities is important to satisfy the many responsibilities of this committee. Due to the nature of the committee work, member consistency is critical. If members are unable to attend, proxy will not be recognized. Committee members may invite additional attendees to participate as appropriate.

The FMD and the consultant team will prepare the Agenda for Steering Committee Meetings for endorsement and distribution by the Steering Committee Chair.

Campus Master Plan 2010-2020 Schedule



Project: FIU_Campus Master Plan.MP
Date: Wed 7/25/12

Task		Rolled Up Milestone		Split		Inactive Milestone		Manual Summary Rollup		Progress	
Milestone		Rolled Up Progress		Rolled Up Split		Inactive Summary		Manual Summary		Deadline	
Summary		External Tasks		External Milestone		Manual Task		Start-only			
Rolled Up Task		Project Summary		Inactive Task		Duration-only		Finish-only			