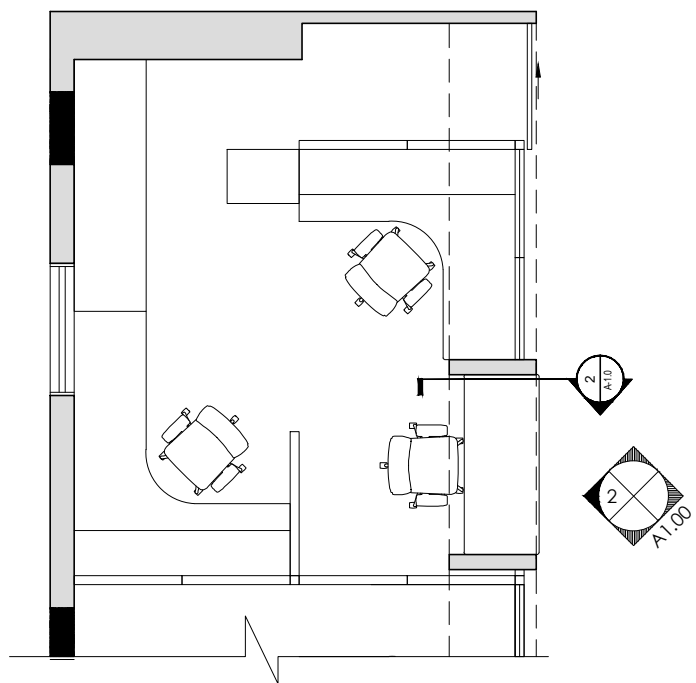
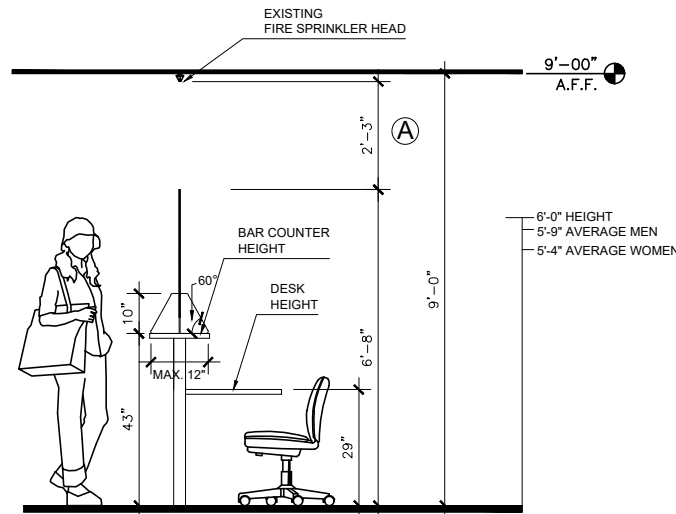


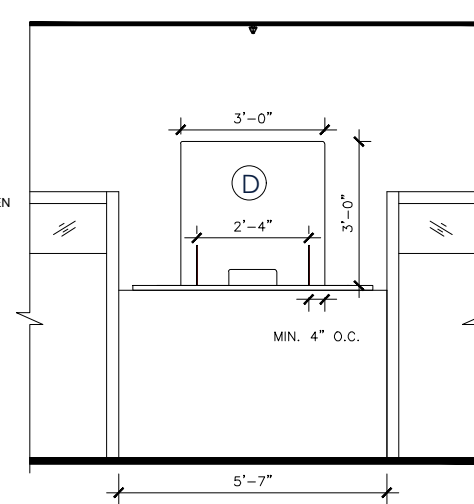
**DESIGN SCENARIO 1**  
SCALE: 3/16" = 1'-0"



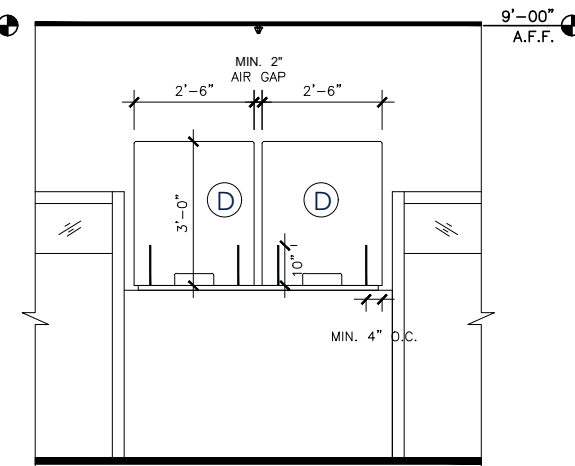
**DESIGN SCENARIO 2**  
SCALE: 3/16" = 1'-0"



**SECTION 1**  
SCALE: 1/4" = 1'-0"



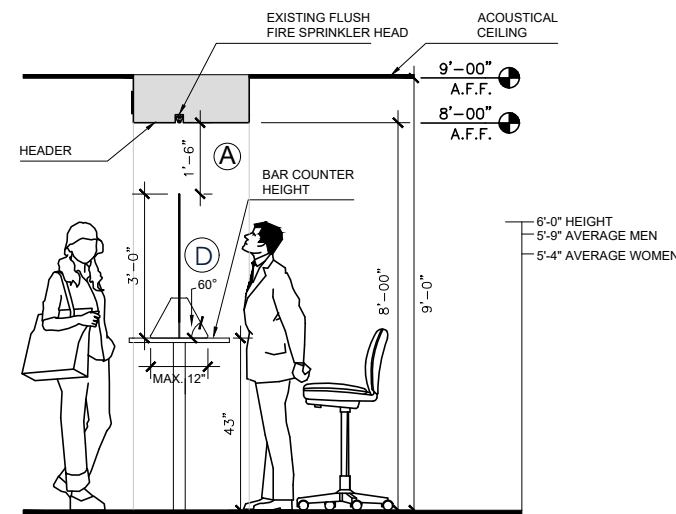
**ELEVATION 1 - OPTION A**  
36W x 36H PROTECTIVE DIVIDER



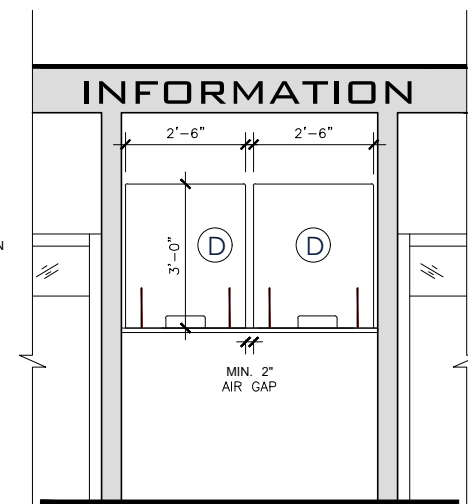
**ELEVATION 1 - OPTION B**  
30W x 36H PROTECTIVE DIVIDER

**IMPORTANT NOTES**

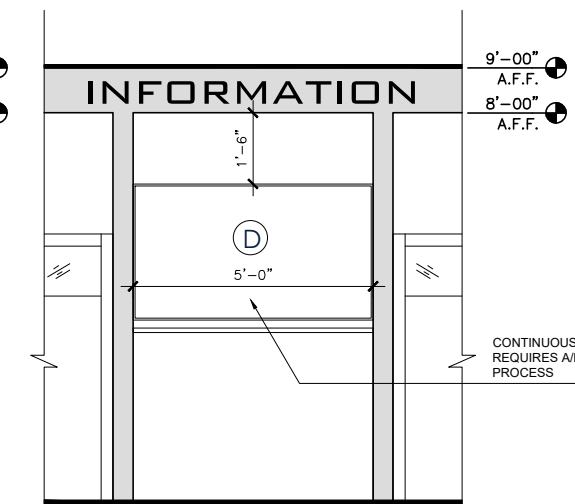
- A The protective divider(s) must leave a Minimum of 18" clearance to the underside of the fire sprinklers or ceiling to ensure proper spray pattern coverage.
- B The protective divider(s) must maintain a 3'-0" distance from any Fire Alarm Notification or Protection Devices.
- C The protective divider(s) must maintain a transparent surface. **Signage and decals are not permitted.**
- D The protective divider(s) should not exceed a maximum length of 36" and a maximum height of 36" otherwise, It will require A/E design/calculations drawings and permit process.
- E The portable protective divider(s) should be properly affixed with commercial VELCRO so as not to tip/fall over during regular use or cleaning of the area.
- F The protective divider(s) should have round corners. The required thickness is 1/4". The base angle if needed should be 60°. The base should be a solid rigid material with a minimum of 6 inches or a maximum of 12 inches width. The air gap between divider should be minimum of 2 inches and a maximum of 4 inches.
- G All installations shall be inspected and approved by the FIU Fire Prevention Office.
- H All installations shall be kept as temporary structures not to exceed 30 days after the State of Florida Public Health Emergency order is lifted.



**SECTION 2**  
SCALE: 1/4" = 1'-0"



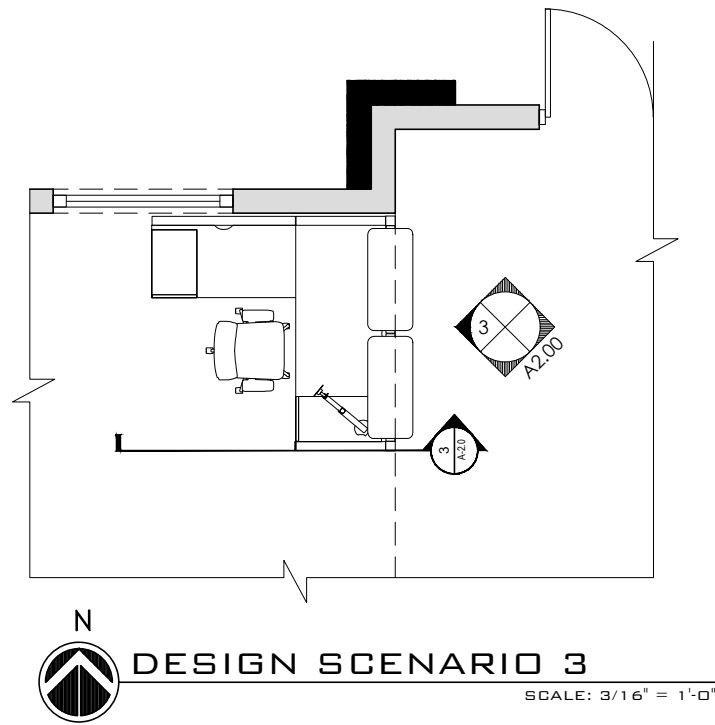
**ELEVATION 2 - OPTION A**  
30W x 36H PROTECTIVE DIVIDER



**ELEVATION 2 - OPTION B**  
30W x 36H PROTECTIVE DIVIDER

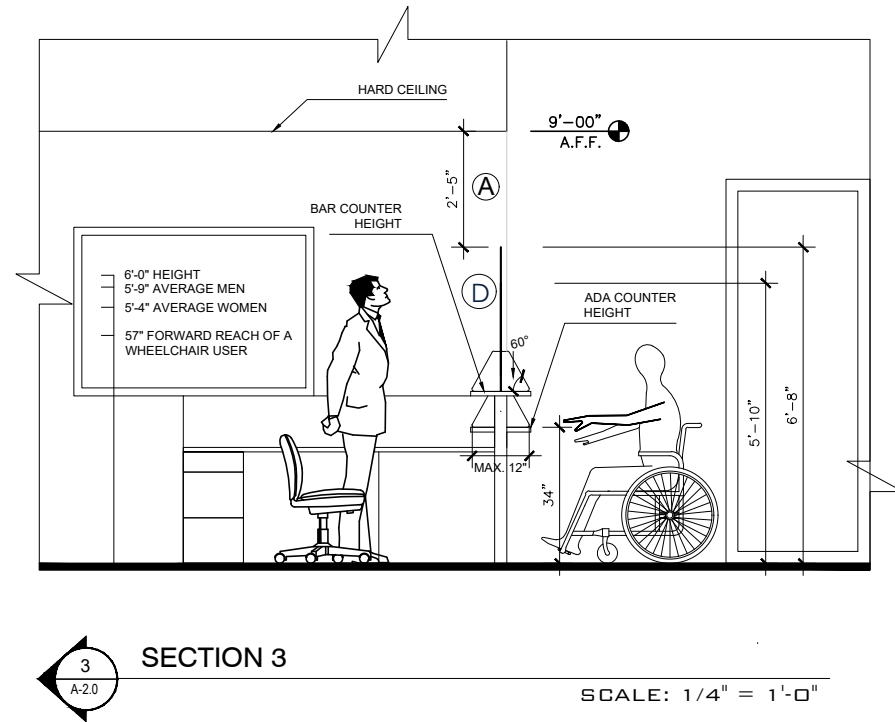
CONTINUOUS PROTECTIVE DIVIDER INSTALLATION REQUIRES A/E DESIGN CALCULATIONS AND PERMIT PROCESS

PLEASE READ THE IMPORTANT NOTES ABOVE



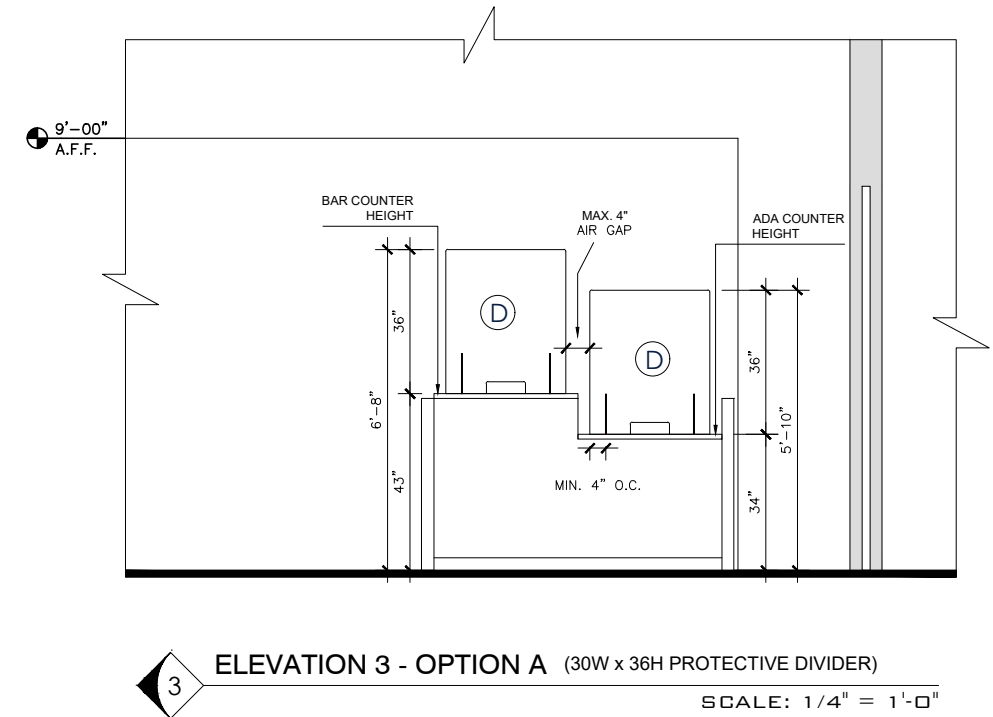
**DESIGN SCENARIO 3**

SCALE: 3/16" = 1'-0"



**SECTION 3**

SCALE: 1/4" = 1'-0"



**ELEVATION 3 - OPTION A (30W x 36H PROTECTIVE DIVIDER)**

SCALE: 1/4" = 1'-0"

**IMPORTANT NOTES**

- A The protective divider(s) must leave a Minimum of 18" clearance to the underside of the fire sprinklers or ceiling to ensure proper spray pattern coverage.
- B The protective divider(s) must maintain a 3'-0" distance from any Fire Alarm Notification or Protection Devices.
- C The protective divider(s) must maintain a transparent surface. **Signage and decals are not permitted.**
- D The protective divider(s) should not exceed a maximum length of 36" and a maximum height of 36" otherwise, It will require A/E design/calculations drawings and permit process.
- E The portable protective divider(s) should be properly affixed with commercial VELCRO so as not to tip/fall over during regular use or cleaning of the area.
- F The protective divider(s) should have round corners. The required thickness is 1/4". The base angle if needed should be 60°. The base should be a solid rigid material with a minimum of 6 inches or a maximum of 12 inches width. The air gap between divider should be minimum of 2 inches and a maximum of 4 inches.
- G All installations shall be inspected and approved by the FIU Fire Prevention Office.
- H All installations shall be kept as temporary structures not to exceed 30 days after the State of Florida Public Health Emergency order is lifted.

**PROTECTIVE DIVIDER BASE EXAMPLES**

The protective divider(s) should have round corners. The required thickness is 1/4". The base angle if needed should be 60°. The base should be a solid rigid material with a minimum of 6 inches or a maximum of 12 inches width.

