



FLORIDA
INTERNATIONAL
UNIVERSITY

FLORIDA INTERNATIONAL UNIVERSITY

CAMPUS MASTER PLAN UPDATE 2010-2020

Focus Groups Work Session #1

27/28/30 AUGUST 2012

PERKINS+WILL

Focus Group 6

Group 6 Transportation, Parking, Transit, Bicycle & Pedestrian

Steve Sauls, Steering Committee Advocate

Bill Foster (Transportation)

Alex Casas (Public Safety)

Ruben Almaguer (Emergency Management)

Lehman Center Representative (Transit)

Javier Rodriguez (MDX)

Robert Herrada (Sweetwater Public Works)

Tanya Wilson-Sejour (North Miami Planning)

Alberto Delgado (Construction/Architecture)

Ruben Diaz-Neda (FIU Graduate Student)

FIU Faculty Member



Focus Group 6

Group 6 Transportation

Typical items to be discussed at each Focus Group

- ✓ Provide overview of Campus Master Plan process, project schedule, and meetings
- ✓ Review and prioritize pertinent Evaluation and Appraisal Report (EAR) issues per group element(s)
- ✓ Key Issues that are important to You – review and share information brought to meeting to share with group
- ✓ Studies or Initiatives underway that would be helpful to incorporate in master plan
- ✓ Discuss additional university strengths, weaknesses, opportunities and threats
- ✓ Confirm Best Practices from other universities or communities



Master Planning Schedule

Inventory & Analysis	July-Oct 2012
Preliminary Alternative Concepts	Nov-Dec 2012
Concept Plan Development	Jan 2013
Draft Comprehensive Master Plan	Feb-July 2013
Final Comprehensive Master Plan	Aug-Dec 2013
BOT Approval of Master Plan	Dec 2013

University-Wide Campus Master Plan Elements



Major Planning Challenges

- Develop a Sustainable Campus Environment
- Develop better options with Transportation and Access
- Establish better Connectivity with Neighboring Communities
- Meeting Increased Enrollment-Housing, Academic & Research
- Land Use Constraints at MMC, EC, and BBC

Major Issues: 2012 Evaluation / Appraisal Report

- **Overcrowding at Modesto Maidique Campus**
- **Accountability Measures to Exceptions to the Campus Master Plan**
- **Parking Availability / Accessibility & Transportation Options**
- **Traffic Congestion / Roadway Capacity**
- **Student Housing Demand**
- **Recreation & Open Space Preservation**
- **Land Use Constraints**
- **Future of Biscayne Bay Campus & Engineering Center**
- **Campus Identity: Architecture and Landscaping**
- **Improved Relations with Host Communities**

Focus Group 6

Evaluation and Appraisal Report

- ✓ Address golf cart usage at MMC; golf carts impact pedestrian walkability and create liability in case of injury
- ✓ Continue to explore strategies for meeting the parking needs at MMC, including van pool shuttles within the vicinity of MMC and continued exploration of off-campus parking in the City of Sweetwater
- ✓ Implement alterations to the traffic circle on SW 16th Street designed by Facilities Planning to simplify and channel traffic flow more efficiently.
- ✓ Continue to explore strategies for meeting the parking needs at MMC, including off-campus parking at University City project in the City of Sweetwater
- ✓ Identify strategies to expand and enhance alternative transportation and sustainability programs
- ✓ Support work with the Miami-Dade Transit Department to increase transit services at FIU campuses, including advocating and lobbying for Metrorail extensions that would serve MMC, the EC and western Miami-Dade County communities.

Focus Group 6

Evaluation and Appraisal Report

- ✓ Consider the potential for expansion of Miami-Dade County's Metro Rail system when planning for parking at MMC
- ✓ Continue to work with Miami-Dade County and host city "Circulators" to provide reliable and efficient transportation to FIU's campuses
- ✓ Consider incentives and disincentives to increase a mode shift to public transit and carpool travel to and from campus
- ✓ Review the current shuttle system between MMC, BBC, and EC to expand service, correct deficiencies and to meet the future needs of the University; consider how faculty staff and students might choose to park at the university location closest to where they live and take a shuttle to their actual campus destination
- ✓ Consider Transportation Demand Strategies to include staggering class schedules to increase parking availability on campuses
- ✓ Plan for traffic signal lights at MMC to help ease traffic congestion
- ✓ Study modification of access roads leading to the Blue and Gold parking garages as a way to free up adjacent land in the southeastern quadrant of MMC

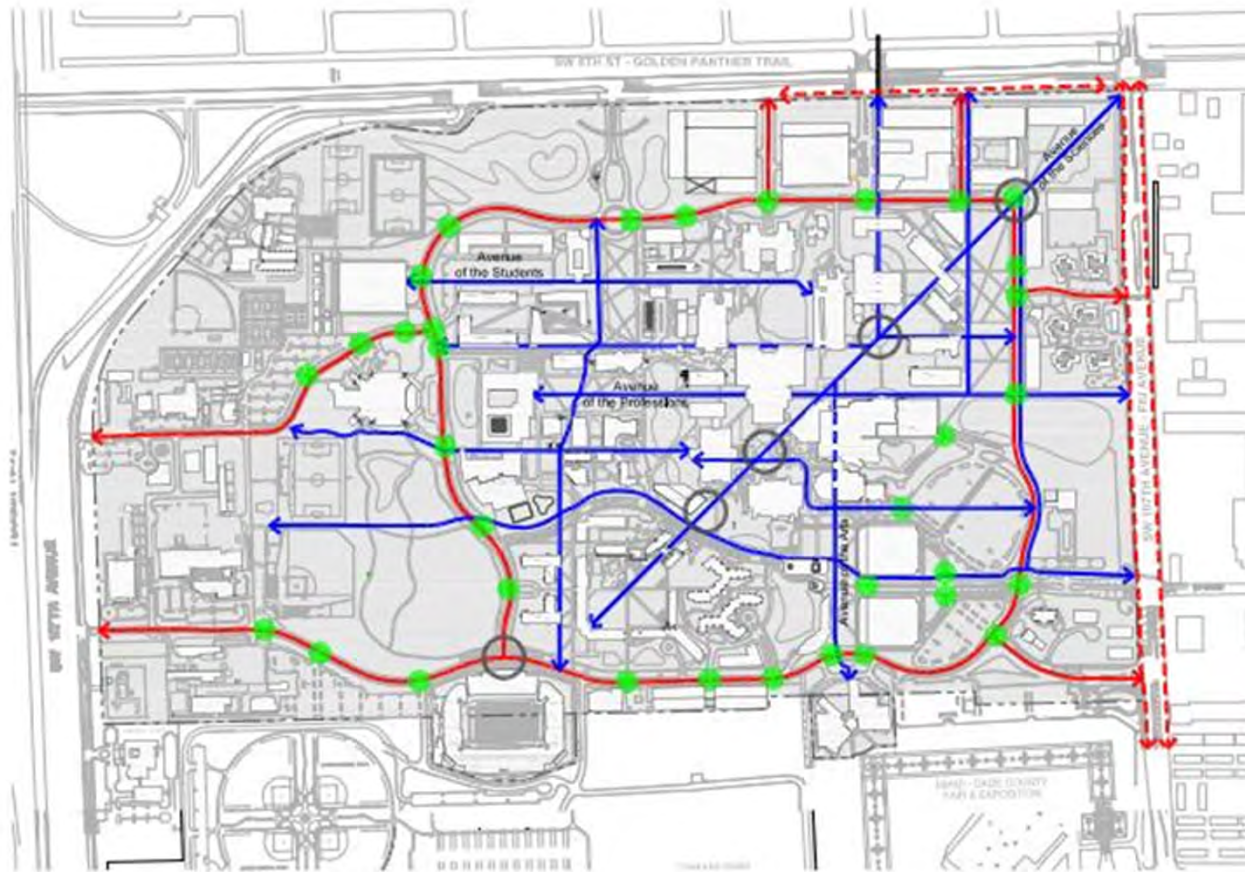
Focus Group 6

MODESTO CAMPUS SUPPORTING DOCUMENTS: TRANSIT, CIRCULATION & PARKING



Focus Group 6

MODESTO CAMPUS SUPPORTING DOCUMENTS: PEDESTRIAN AND NON VEHICULAR



LEGEND

- Main Pedestrian Walk
- Bicycle Path
- Planned Crosswalks
- Campus Node

KEY MAP



FIGURE 11.1b
Modesto A. Majdique Campus
Pedestrian & Non-Vehicular
Circulation



Focus Group 6

ENGINEERING CENTER SUPPORTING DOCUMENTS: TRANSIT, CIRCULATION & PARKING



LEGEND

- Proposed Transit Route
- Transit Stop
- Service Route
- Structured Parking
- Surface Parking (6 Lots)
- Traffic Circle / Drop Off

KEY MAP



FIGURE 11.2a
Engineering Center
Transit, Circulation
& Parking



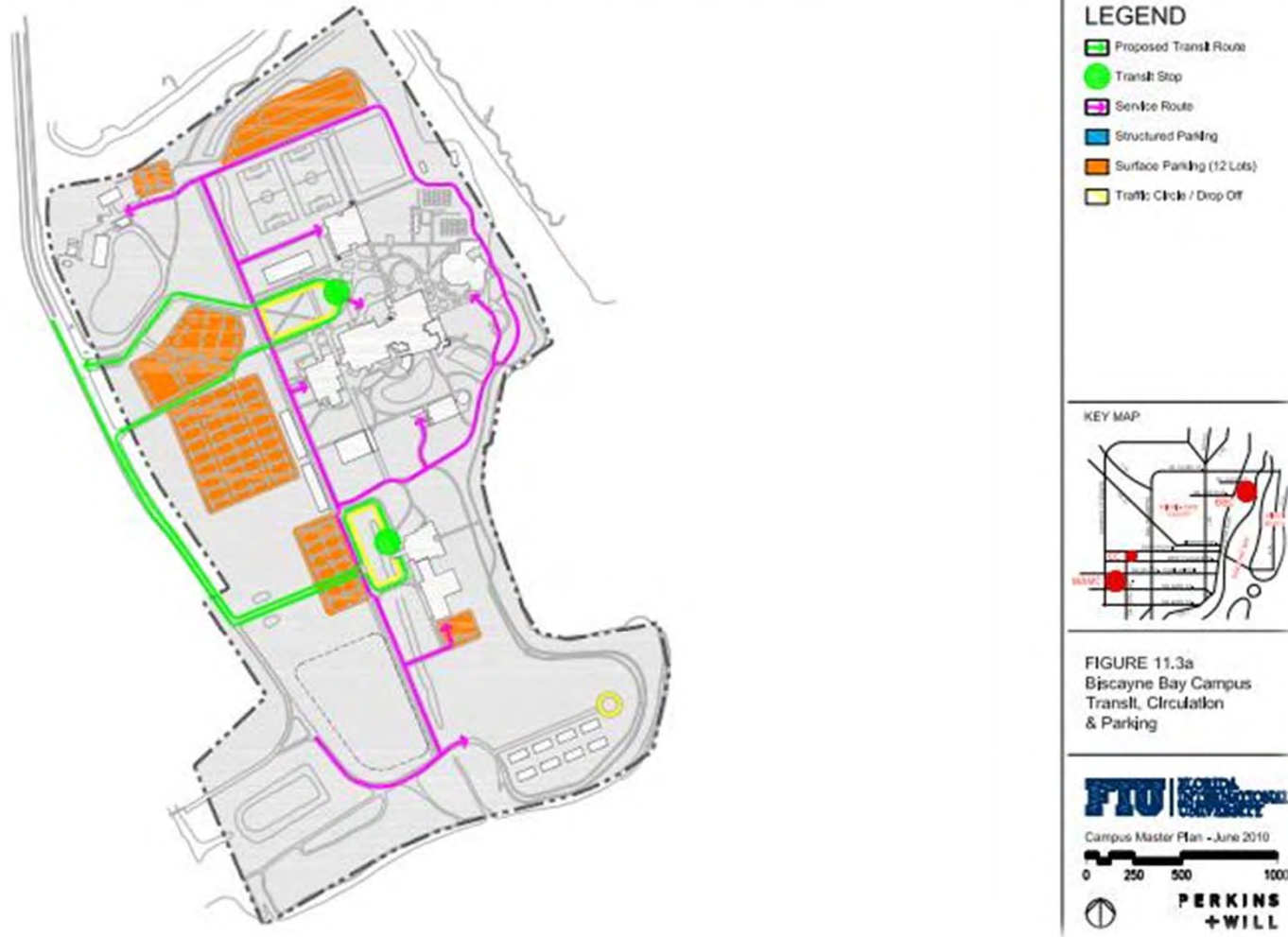
Focus Group 6

ENGINEERING CENTER SUPPORTING DOCUMENTS: PEDESTRIAN & NON VEHICULAR



Focus Group 6

BISCAYNE BAY CAMPUS SUPPORTING DOCUMENTS: TRANSIT, CIRCULATION & PARKING



Focus Group 6

BISCAYNE BAY CAMPUS SUPPORTING DOCUMENTS: PEDESTRIAN & NON VEHICULAR



LEGEND

- Main Pedestrian Walk
- Bicycle Path
- Planned Crosswalks
- Campus Node

KEY MAP



FIGURE 11.3b
Biscayne Bay Campus
Pedestrian & Non-Vehicular
Circulation



FOCUS GROUP 6

Traffic Congestion/Roadway Capacity- Modesto Campus

Intersections to be Analyzed

- SW 8TH ST. and SW 117TH AVE
- SW 8TH ST. and SW 112TH AVE
- SW 8TH ST. and SW 109TH AVE
- SW 8TH ST. and SW 108TH AVE
- SW 8TH ST and SW 107TH AVE
- SW 117TH AVE and SW 17TH ST
- SW 115TH AVE AND SW 17TH ST
- SW 115TH AVE AND SW 11TH ST
- SW 17TH ST. AND UNIVERSITY DR
- SW 14TH ST AND UNIVERSITY DR
- SW 11TH ST AND UNIVERSITY DR**
- SW 112TH AVE AND UNIVERSITY DR
- SW 109TH AVE AND UNIVERSITY DR**
- SW 108TH AVE AND UNIVERSITY DR**
- SW 12TH ST AND UNIVERSITY DR
- SW 12TH ST AND SW 107TH AVE
- SW 16TH ST AND UNIVERSITY DR
- SW 16TH ST AND SW 107TH AVE



Internal Campus Drive Signalization Improvements

FOCUS GROUP 6

Traffic Congestion/Roadway Capacity-Engineering Campus

Intersections to be Analyzed

- NW 107TH AVE and FIU EC ENTRANCE
- NW 107TH AVE and NW 7TH ST.
- W FLAGLER ST and FIU EC ENTRANCE
- W FLAGLER ST and FIU EC ENTRANCE

Intercampus Connectivity

- Campus Shuttle to MMC
- Pedestrian Bridge Connection at MMC
- Pedestrian Greenway Connection



FOCUS GROUP 6

Traffic Congestion/Roadway Capacity-Biscayne Campus

Intersections to be Analyzed

- NE 163RD ST and BISCAYNE BLVD
- NE 151ST ST and BISCAYNE BLVD
- NE 163RD ST and INTERAMA BLVD
- NE 151ST ST and NE 145TH ST
- NE 151ST ST and FIU ENTRANCE

Evaluation of 2nd Entry to BBC

- Critical to Campus Expansion/Build-up



FOCUS GROUP 6

Parking Structures- PG-5



FOCUS GROUP 6

Modesto Campus: FIU SW 108th Avenue Connector

Connection from East Campus Circle to SW 8th St

- ✓ Ingress and Egress provided to PG-5
- ✓ Pedestrian and Bicycle Connectivity
- ✓ Traffic Calming- Controlled U-turns, Speed Tables
- ✓ Hourly Metered On-Street Parking at Market Station

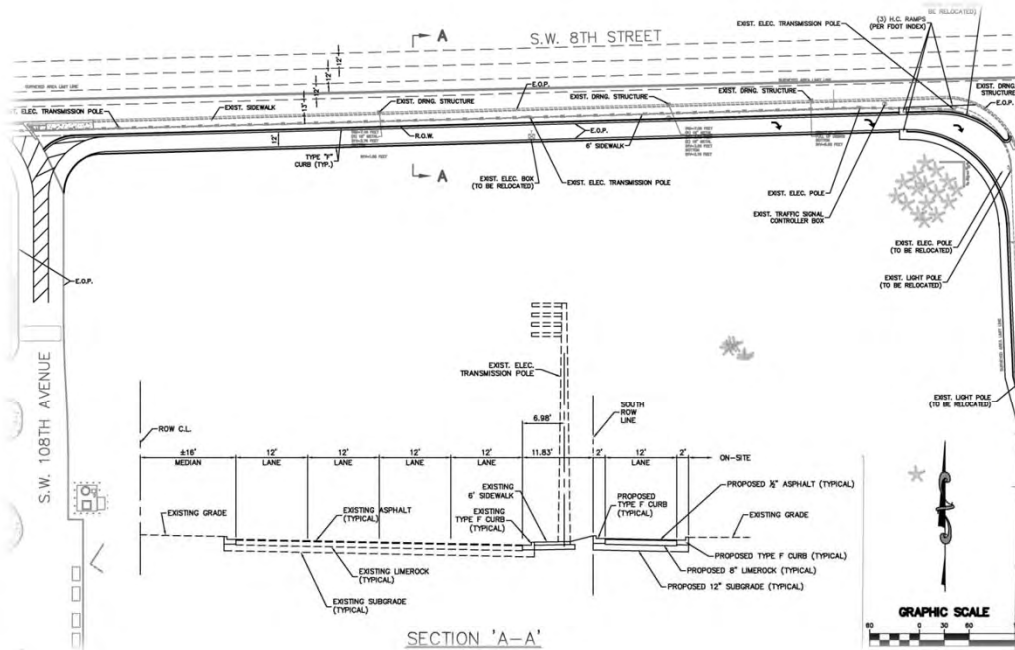


FOCUS GROUP 6

Modesto Campus: FIU SW 108th Avenue and SW 8th Street Access

Right In Only Access- Driveway Connection

- ✓ SW 107th Ave and SW 109th Ave Operational Analysis
- ✓ Future Right-Out Options Conceptually designed to SW 107th Ave



FOCUS GROUP 6

Modesto Campus: FIU 10th St. and Roundabout

Transportation Infrastructure Improvements

- ✓ Future Entryway to Stempel Complex
- ✓ Single Lane Modern Roundabout
- ✓ Traffic Calming Measures- Speed Humps
- ✓ Sidewalk Connectivity
- ✓ Intersection and Road Realigning

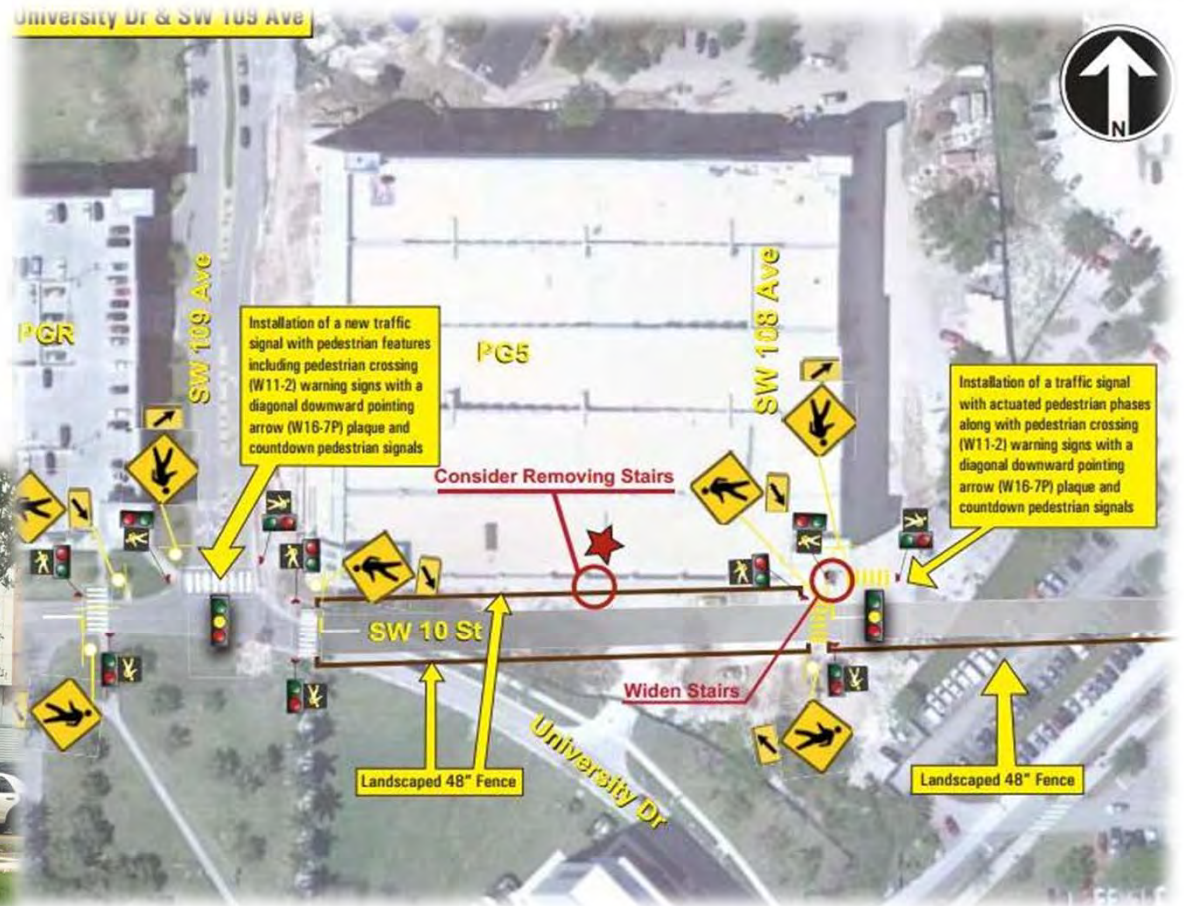


FOCUS GROUP 6

Safety Improvements/Pedestrian Circulation- Modesto Campus

New Signalization/Signing and Marking

- Pedestrian Safety and Mobility Evaluation
- New Mast Arm Signals at 3 Locations
 - ✓ SW 11TH ST AND UNIVERSITY DR
 - ✓ SW 109TH AVE AND UNIVERSITY DR
 - ✓ SW 108TH AVE AND UNIVERSITY DR
- High Crash Location at SW 109th Ave
 - ✓ Failure to yield the ROW
 - ✓ Adequate Pedestrian Signal Phase during normal semester day.



FOCUS GROUP 6

Traffic Calming- Pedestrian Safety and Circulation

Creation of Speed Tables

- ✓Combination of crosswalks and speed humps
- ✓Evaluation of campus wide traffic calming measures
- ✓Review per code and industry standards

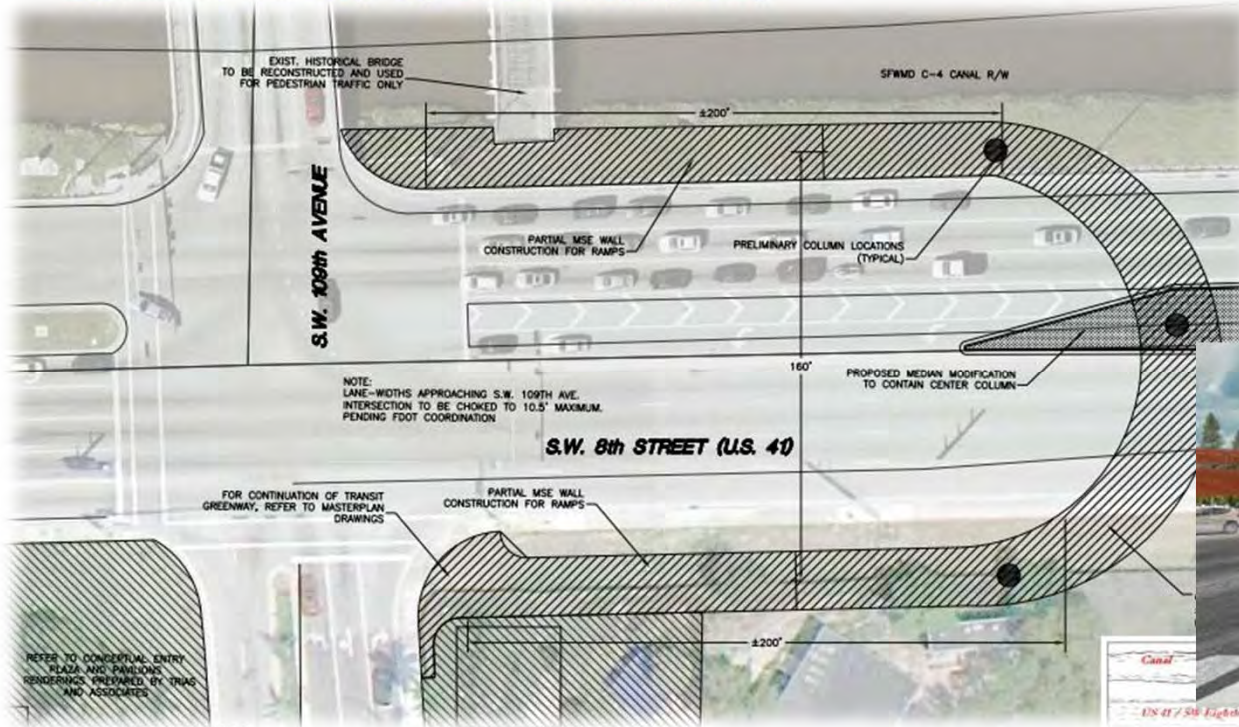


FOCUS GROUP 6

Multi-Modal/Transit- Tiger Grants

Pedestrian Parabola Bridge Feasibility-SW 109th

- TIGER Grant 2012 University City Prosperity Project
 - ✓Connection from MMC to Apartments to Sweetwater
- University City Alliance(UCA) Partnership- Sweetwater
- Sustainable University City Subarea Mobility Study



07 AUGUST 2012

FOCUS GROUP 6

Multi-Modal/Transit- Tiger Grants

RRAC UNIVERSITY APARTMENTS

- TIGER Grant 2012 University City Prosperity Project
 - ✓500-600 Bed 15 story (40 beds per floor)
 - ✓Community Connection from MMC to Apartments to Sweetwater
 - ✓2014 Opening for Faculty and Students
- University City Alliance(UCA) Partnership- Sweetwater
- Hertz Car Sharing Program- Car Rentals by the Hour on site similar to the Connect by Hertz on Modesto Campus



FOCUS GROUP 6

Multi-Modal/Transit- Tiger Grants

ADVANCED Transit and Multimodal Station (ATMS)

- Bus Rapid Transit (BRT)- MDX
 - ✓ Connects ATMS with Major Intermodal Facilities
 - ✓ Campus Modal Shift from private vehicles to pedestrian, bicycle and transit modes

