



FLORIDA  
INTERNATIONAL  
UNIVERSITY

FLORIDA INTERNATIONAL UNIVERSITY

# CAMPUS MASTER PLAN UPDATE 2010-2020

Focus Groups Work Session #1

27/28/30 AUGUST 2012

PERKINS+WILL



FLORIDA  
INTERNATIONAL  
UNIVERSITY

# Focus Group 7

# Focus Group 7

Thursday, August 30<sup>th</sup>, 3:30PM – 5:30PM

Group 7 Inter-governmental Coordination, Advancement & Alumni Affairs

**Sandra Gonzalez-Levy, Steering Committee Advocate**

**Steve Sauls (Government Relations)**

**Howard Lipman (Advancement)**

**Duane Wiles (Alumni Affairs)**

**Mayor Maroño (Sweetwater)**

**Mayor Pierre (North Miami)**

**Mark Woerner/Helen Brown (Miami-Dade)**

**John Cal (Facilities Management)**

**Pedro Botta (SIPA)**

**Pablo Haspel (FIU Graduate Student)**



FLORIDA  
INTERNATIONAL  
UNIVERSITY

# Schedule/ Process

# Master Planning Schedule

<b>Inventory &amp; Analysis</b>	<b>July-Oct 2012</b>
<b>Preliminary Alternative Concepts</b>	<b>Nov-Dec 2012</b>
<b>Concept Plan Development</b>	<b>Jan 2013</b>
<b>Draft Comprehensive Master Plan</b>	<b>Feb-July 2013</b>
<b>Final Comprehensive Master Plan</b>	<b>Aug-Dec 2013</b>
<b>BOT Approval of Master Plan</b>	<b>Dec 2013</b>

# University-Wide Campus Master Plan Elements





# Major Planning Challenges

- Develop a Sustainable Campus Environment
- Develop better options with Transportation and Access
- Establish better Connectivity with Neighboring Communities
- Meeting Increased Enrollment-Housing, Academic & Research
- Land Use Constraints at MMC, EC, and BBC

# Major Issues: 2012 Evaluation / Appraisal Report

- **Overcrowding at Modesto Maidique Campus**
- **Accountability Measures to Exceptions to the Campus Master Plan**
- **Parking Availability / Accessibility & Transportation Options**
- **Traffic Congestion / Roadway Capacity**
- **Student Housing Demand**
- **Recreation & Open Space Preservation**
- **Land Use Constraints**
- **Future of Biscayne Bay Campus & Engineering Center**
- **Campus Identity: Architecture and Landscaping**
- **Improved Relations with Host Communities**





FLORIDA  
INTERNATIONAL  
UNIVERSITY

# Prioritize EAR Issues

# Focus Group 7

**Thursday, August 30<sup>th</sup>, 3:30PM – 5:30PM**

**Group 7 Inter-governmental Coordination, Advancement & Alumni Affairs - EAR Agenda Items:**

## **Intergovernmental Coordination**

1. Increase engagement with stakeholders and communities surrounding all campuses
2. Review comprehensive plans from Miami-Dade, Sweetwater, and North Miami to ensure changes and amendments to their plans do not adversely impact University facilities and resources or reduce future development potential of the University.
3. Verify maintenance, modification and evaluation of procedures to be followed in updating the adopted Campus Master Plan every five years

## **Other**

1. Ensure that the University has an opportunity to review proposed amendments of host communities' Comprehensive Plans that change land uses or policies that impact development of land near designated campus space, that affect the provision of local services, or that otherwise impact University facilities and resources
2. Assess the impacts of proposed development agreements on University facilities and resources
3. Develop an evaluation system to ensure the University is meeting the level-of-service standards for public facilities and services that are interconnected with local facilities and services for which the local government have operational and maintenance responsibilities
4. Strengthen partnerships with host communities, particularly the Cities of Sweetwater and the City of North Miami to ensure development agreements are fulfilled and to mitigate potential conflict.

# Key Issues/ Best Practices

# Focus Group 7

**Thursday, August 30<sup>th</sup>, 3:30PM – 5:30PM**

**Group 7 Inter-governmental Coordination, Advancement & Alumni Affairs**

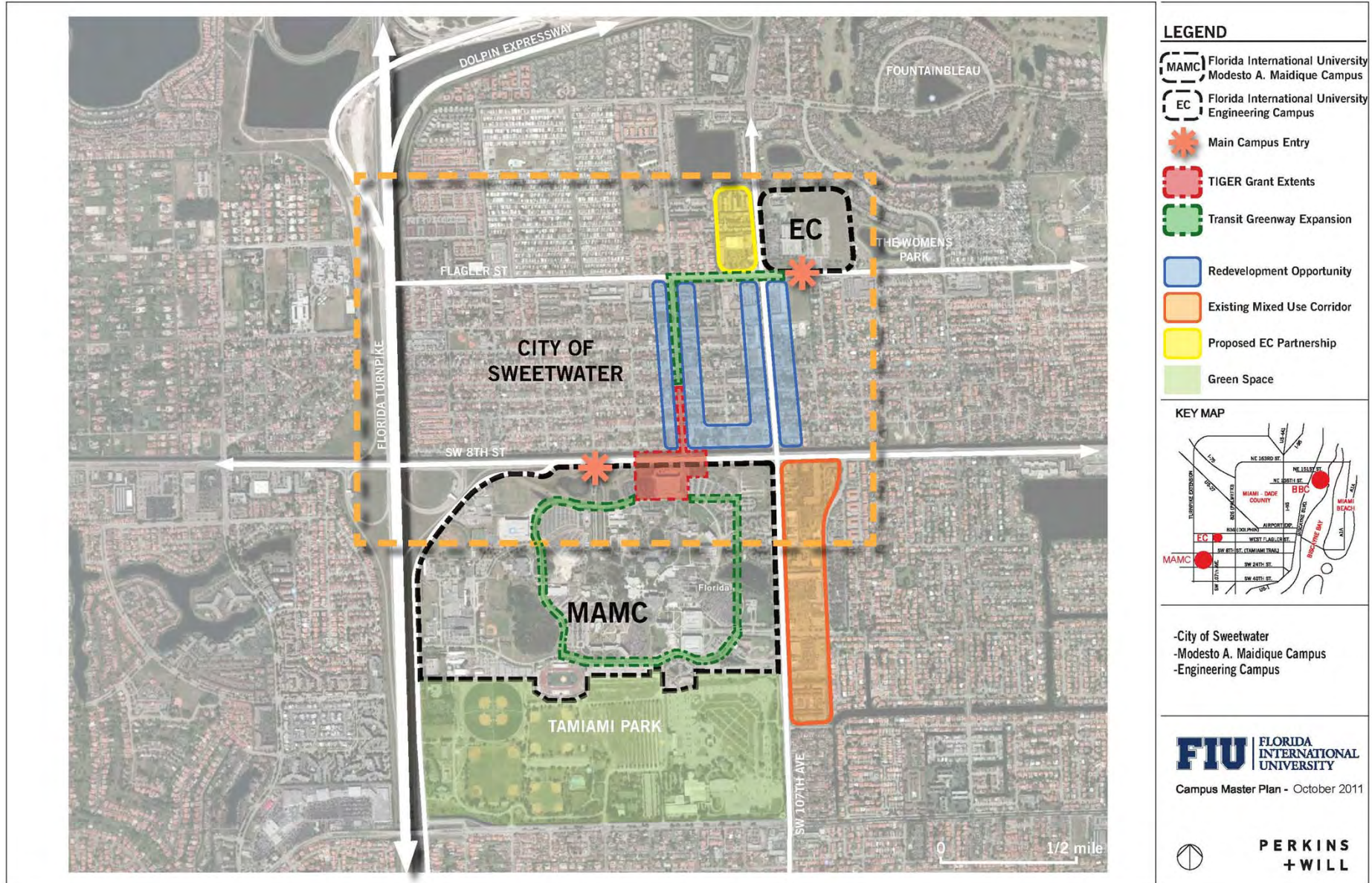
**Key Issues that are important to You - information to share with group; Studies or Initiatives underway that would be helpful to incorporate in master plan – 15 minutes**

- **What has changed in strategic direction from the last campus plan?**
- **Inventory of all host and affected local governments, and other units of local government providing services but not having regulatory authority – we've received**
- **Need: Inventory of all previous fair share payments made by the University to its host or affected local government as a result of existing Campus Development Agreement(s)**

**Confirm Best Practices from other universities or communities – 10 minutes**



# Modesto A. Maidique Campus & Engineering Center Context






# Biscayne Bay

## Context Area Map



### LEGEND

 Biscayne Bay Campus

### KEY MAP



FIGURE 4.3a  
Biscayne Bay Campus  
Context Area Map

**FIU** FLORIDA  
INTERNATIONAL  
UNIVERSITY

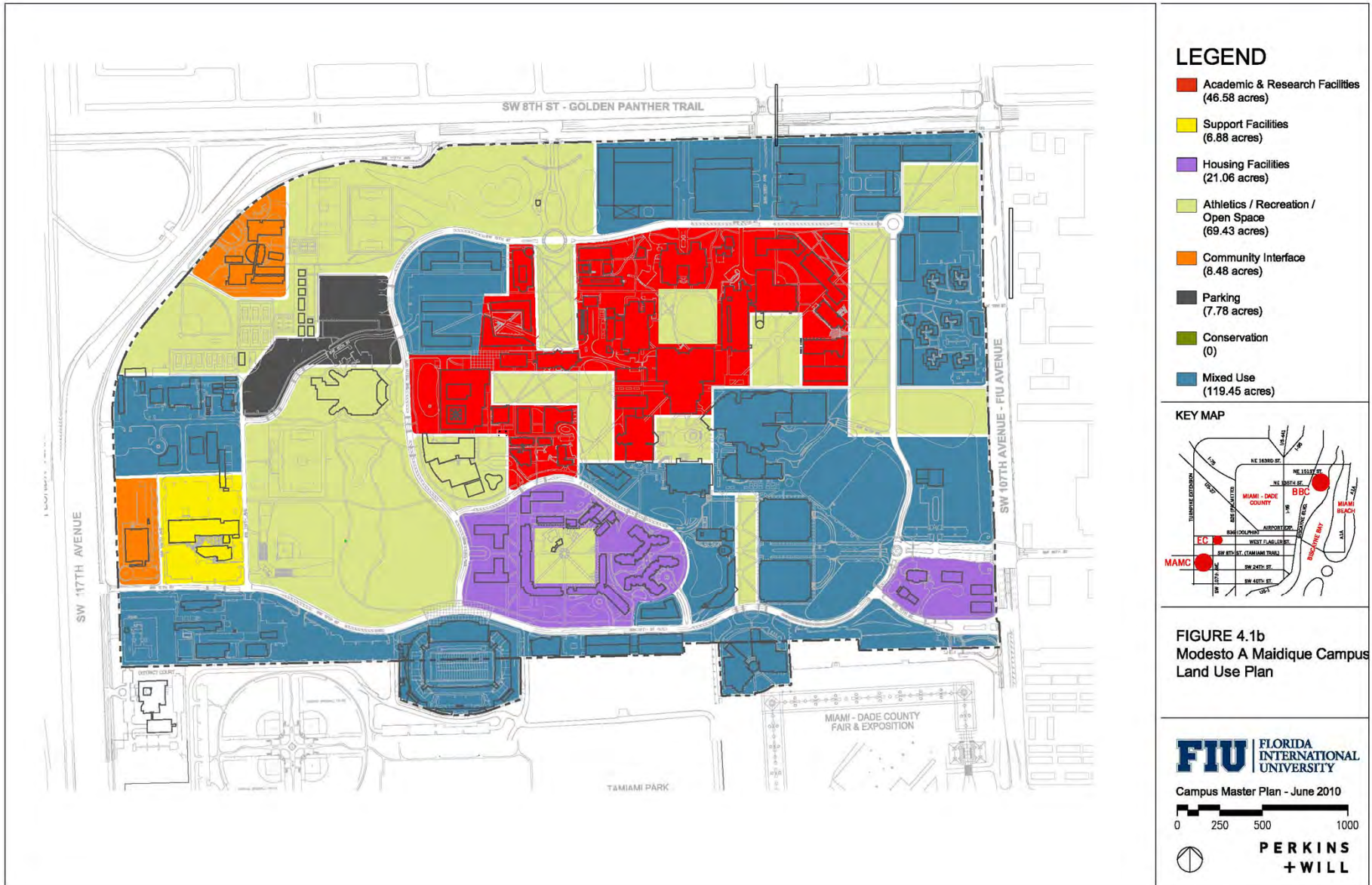
Campus Master Plan - June 3, 2009



**PERKINS  
+WILL**

# Modesto A. Maidique Campus

## Land Use





# Biscayne Bay

## Land Use



# Engineering Center

## Land Use





# Modesto Maidique Campus

## UPDATES SINCE 2010



LEGEND	
BLDG. #	BUILDING NAME
01	CHARLES E. FERRY PRIMERIA CASA
02	DELUXE MANSION
03	ERNEST R. GRAHAM UNIV. CTRL
03A	ERNEST R. GRAHAM UNIV. CTRL. EXPANSION
04	VERTICES HAUS
04A	CENTRAL UTILITIES ONE
05	STEVEN & DORTHEA GREEN LIB.
05A	GREEN LIBRARY ADDITION
06	OWA EBAN
06A	WERTHEIM CONSERVATORY / BLD. GREENHOUSE
07	U.S. CENTURY BANK ARENA
07B	FITNESS CENTER ADDITION
08	ENGINEERING & COMPUTER SCIENCE
09	CHEMISTRY & PHYSICS
10	COLLEGE OF HEALTH
11	RYDER BUSINESS BUILDING
12	UNIVERSITY HEALTH SVC.COMPLEX
13	LABOR CENTER
14	SANFORD & DOLores ZIFF EDU. INFORMATION CENTER
14A	INFORMATION CENTER
15	BASEBALL STADIUM
16	HERBERT & NICOLE WERTHEIM CTR.
17	CHILDREN'S CREATIVE LEARNING
19	PANTHER RESIDENCE HALL
19A	UNIVERSITY PARK TOWERS
19B	EVERGLADES HALL
19C	LAKEVIEW HOUSING - NORTH
19CS	LAKEVIEW HOUSING - SOUTH
19E	GRADUATE STUDENT HOUSING
20	ATHLETICS ACADEMIC FITNESS CENTER
21	ACADEMIC HEALTH CENTER 1
21A	ACADEMIC HEALTH CENTER 2
22	CAMPUS SUPPORT COMPLEX SHOPS
23	CAMPUS SUPPORT COMPLEX ADMIN
24	PAUL CEJAS ARCHITECTURE MANAGEMENT & ADVANCED RESEARCH
25	RESEARCH
26	CARLOS FINLAY ELEMENTARY SCHOOL
27	RAFAEL DIAZ-SALART HALL
28	RONALD W. REGAN PRES. HOUSE
29	PATRICK/PHILLIP FROST MUSEUM
30	COLLEGE OF BUSINESS COMPLEX
30	COLLEGE OF BUSINESS COMPLEX - PHASE TWO
31	CENTRAL UTILITIES TWO
31A	SATELLITE CHILLER PLANT
32	FIU COMMUNITY STADIUM
32A	FIU COMMUNITY STADIUM EXPANSION
32B	STADIUM UPPER BOWL EXPANSION
33	RECREATION CENTER
33A	RECREATION CENTER-EXPANSION
35	HUMANITIES CENTER/OFFICE
36	SCHOOL INTER. & PUBLIC AFFAIRS
36A	SIPA - PHASE TWO
37	TRAINING COMPLEX
38	STOCKER ASTROSCIENCE CTR.
39	ACADEMIC HEALTH CENTER 3
40	WOMEN'S SOFTBALL/TENNIS CX
41	HURRICANE CENTER (NOVA)
42	ACADEMIC HEALTH CENTER 4
43	ACADEMIC HEALTH CENTER 5
44	AMBULATORY CORE CENTER
45	MEDICAL ARTS PAVILION 1
46	MEDICAL ARTS PAVILION 2
47	ACADEMIC HEALTH CENTER 6
48	RESEARCH 1 & 2
49	MEDICAL ARTS PAVILION 3
50	ART STUDIO
51	CAREER SERVICES BUILDING
52	MIXED-USE COLLEGE OF BUSINESS BUILDING
53	A.D. FUTURE DEVELOPMENT
54	HONORS COLLEGE
55	STUDENT ACADEMIC SUPPORT CENTER
56	PARKVIEW HOUSING 2013
57	STUDENT HOUSING 2015
58	ALUMNI CENTER
59	ACADEMIC HEALTH CENTER 8
60	PRESIDENT PARK PAVILION
60	A.C. FUTURE DEVELOPMENT
61	CONFERENCE CENTER/HOTEL
C01	TOWER
C05	DUPLICATING CENTER
G1-66	GREEK HOUSING
PG1	PARKING GARAGE 1 GOLD
PG2	PANTHER PARKING GARAGE
PG3	PANTHER PARKING GARAGE
PG4	RED PARKING GARAGE
PG5	PG5 MARKET STATION
PG6	PARKING GARAGE SIX
PG7	PARKING GARAGE SEVEN
PG8	PARKING GARAGE EIGHT
RT-R3	RETAIL
RF1-4	RECREATION FIELDS
SH	SOLAR HOUSE
THA-TH	UNIVERSITY APARTMENTS
W01	WEST 1
W01A	WEST 1A
W01B	WEST 1B
W01C	CERAMICS
W01D	GREEN HOUSE
W02	WEST 2
W03	WEST 3
W05	WEST 5
W06	WEST 6
W08	WEST 8
W08A	DUGOUT 3
W08B	DUGOUT 4
W08C	PRESS BOX & DUGOUT
W07	WEST 7
W09	WEST 9 (PART)
W10	WEST 10
W10A	WEST 10A (ROTC)
W10T	WEST 10 TRAILER

EXISTING BUILDINGS    \* IN CONSTRUCTION OR STARTING 2012    \* FUNDED OR LIKELY FUNDED    FUTURE DEVELOPMENT

\*SEE: <http://facilities.fiu.edu/Documents/Construction/FacilitiesProjectMasterList.pdf>

### FLORIDA INTERNATIONAL UNIVERSITY

#### DRAFT- 2010-2020 MASTER PLAN UPDATE

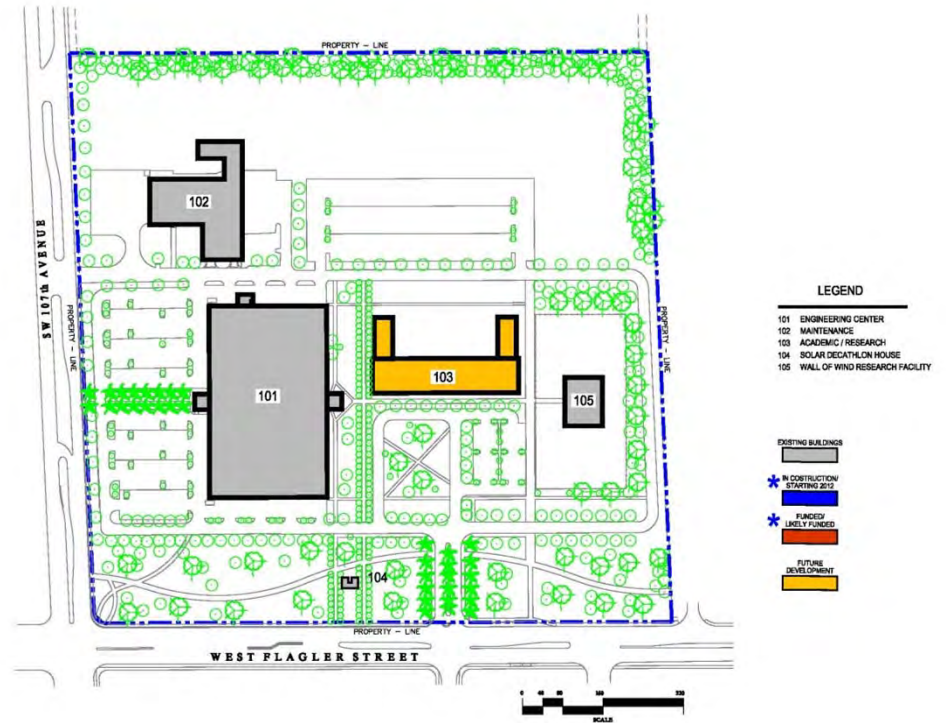
#### - MODESTO A. MAIDIQUE CAMPUS -





# Biscayne Bay Campus / Engineering Center

## UPDATES SINCE 2010



# S.W.O.T. Analysis

# Focus Group 7

Thursday, August 30<sup>th</sup>, 3:30PM – 5:30PM

Group 7 Inter-governmental Coordination, Advancement & Alumni Affairs

**Discuss strengths, weaknesses, opportunities and threats from University presence – 30 minutes**



FLORIDA  
INTERNATIONAL  
UNIVERSITY

# Next Steps

# Focus Group 7

Thursday, August 30<sup>th</sup>, 3:30PM – 5:30PM

Group 7 Inter-governmental Coordination, Advancement & Alumni Affairs

- **Next Steps: Assign Homework – 5 minutes**