



FLORIDA
INTERNATIONAL
UNIVERSITY

FLORIDA INTERNATIONAL UNIVERSITY

CAMPUS MASTER PLAN UPDATE 2010-2020

Work Session #2

02 OCTOBER 2012

PERKINS+WILL



FLORIDA
INTERNATIONAL
UNIVERSITY

FOCUS GROUP 2

Focus Group 2

Group 2 Open Space, Recreation, Land Use, Conservation & Coastal Management - Agenda:

- Assembly/Introductions: 5 minutes
- Confirmation of Campus Master Plan process, project schedule, and meetings: 5 minutes
- Review and discussion of homework assignment, University strengths and weaknesses: 15 minutes
- Review of enrollment, degree programs, research and clinical projections: 45 minutes
- Review of future building, open space and infrastructure needs: 45 minutes
- Next Steps: 5 minutes

Master Planning Schedule

Inventory & Analysis	July-Oct 2012
Preliminary Alternative Concepts	Nov-Dec 2012
Concept Plan Development	Jan 2013
Draft Comprehensive Master Plan	Feb-July 2013
Final Comprehensive Master Plan	Aug-Dec 2013
BOT Approval of Master Plan	Dec 2013

Planning Precedents / Best Practices

Public liberal arts schools: potential model for BBC

UniverCity mixed use development: Simon Fraser University in Vancouver BC

Model multi-campus system:

- **VCU: main campus and Medical School Campus.**
- **Penn State: main campus with branch learning**

Placemaking / Special branded areas on campus:

- **Model open space: Duke, Vanderbilt, U of Miami, and UF**
- **Ohio State University Oval**
- **UVA quad**
- **Fountains, bamboo gardens, lakes, “kissing bridges”, hammocks, swinging benches, and butterfly gardens,**
- **AHC corner quad that visually welcomes outsiders into FIU campus.**

Model comprehensive planning with sustainability:

- **HUD Sustainability Principles – e.g. livability, walkability**
- **Intentional and Measurable**

Oasis in the City: USC and UCLA

Campus Strengths

Facilities



Campus defining architecture



Mixed use covered space

Campus Strengths

Facilities



Community space within residence halls



Modern student housing



Quiet study areas



Modern student recreational centers

Campus Strengths

Open Space



Shaded walkways



Covered outdoor seating



Attractive and functional landscaping



Open space near student housing

Campus Strengths

Circulation + Parking



Increased parking structures and campus bike lanes



Bike lanes incorporated into campus loop

Campus Issues / Opportunities

Facilities



Overcrowded libraries



Overcrowded student union



Overcrowded student facilities



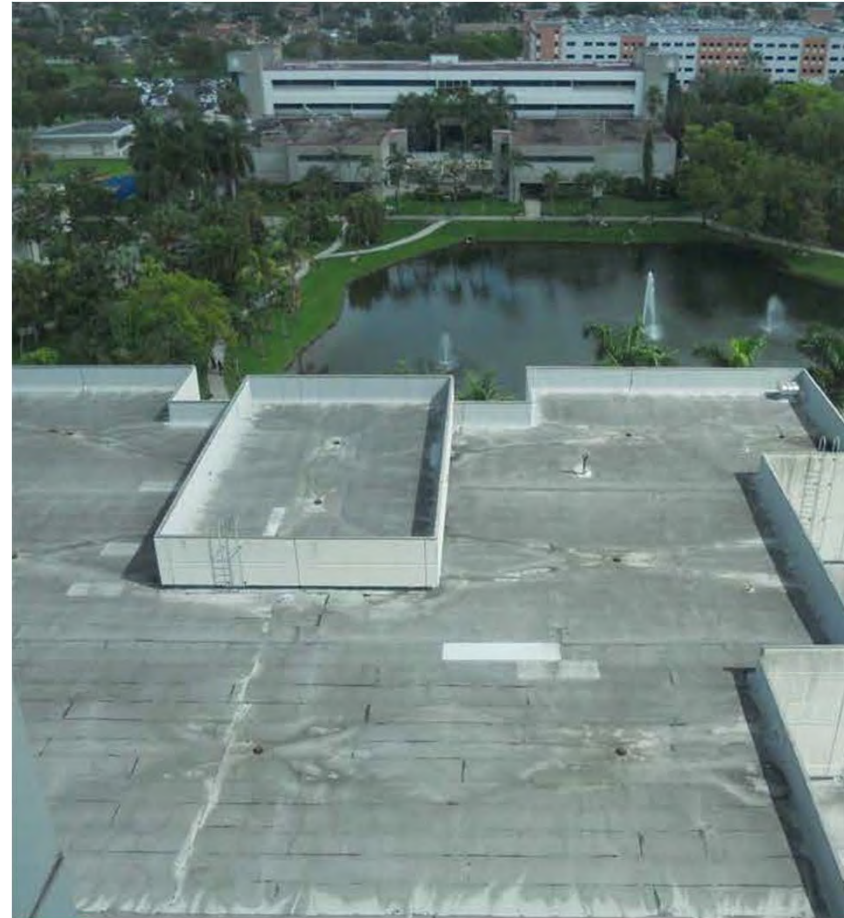
Long food service lines

Campus Issues / Opportunities

Facilities



Lack of ecologically sound building materials



Campus Opportunities

Open Space



Lack of covered walkways throughout campus

Campus Issues / Opportunities

Circulation + Parking



Overcrowded parking lots



Lack of street parking and under utilized carpool lots

Additional Issues / Opportunities

Sustainability Initiatives: Recycling



Centralized and cohesive recycling program



Better identified recycling receptacles

Planning Precedents

Sustainability Initiatives



Loyola Marymount University - Reclaimed water for irrigation



Arizona State University – Campus Engagement



Loyola Marymount University – Powering Stations



University of Colorado –Sustainability research and engagement

Planning Precedents

Sustainability Initiatives



University of California System – Campus wide sustainability



Loyola Marymount University – Water efficient landscaping



Vanderbilt University – Land use practices



Loyola Marymount University – Alt. transportation incentives

Planning Precedents

Sustainability Initiatives: Eco Housing



Duke University – Pratt School of Engineering



Wittenberg University



Cornell University



Plymouth State University

Planning Precedents

Open Space



University of Miami – Architectural Fountain



Gordon College - Amphitheater



University of South Florida – MLK Plaza

Planning Precedents

Open Space



University of Houston – Bronze statue of college mascot



University of Wollongong – Large outdoor chess set

Enrollment Assumptions by Campus

Overall University Enrollment Assumptions

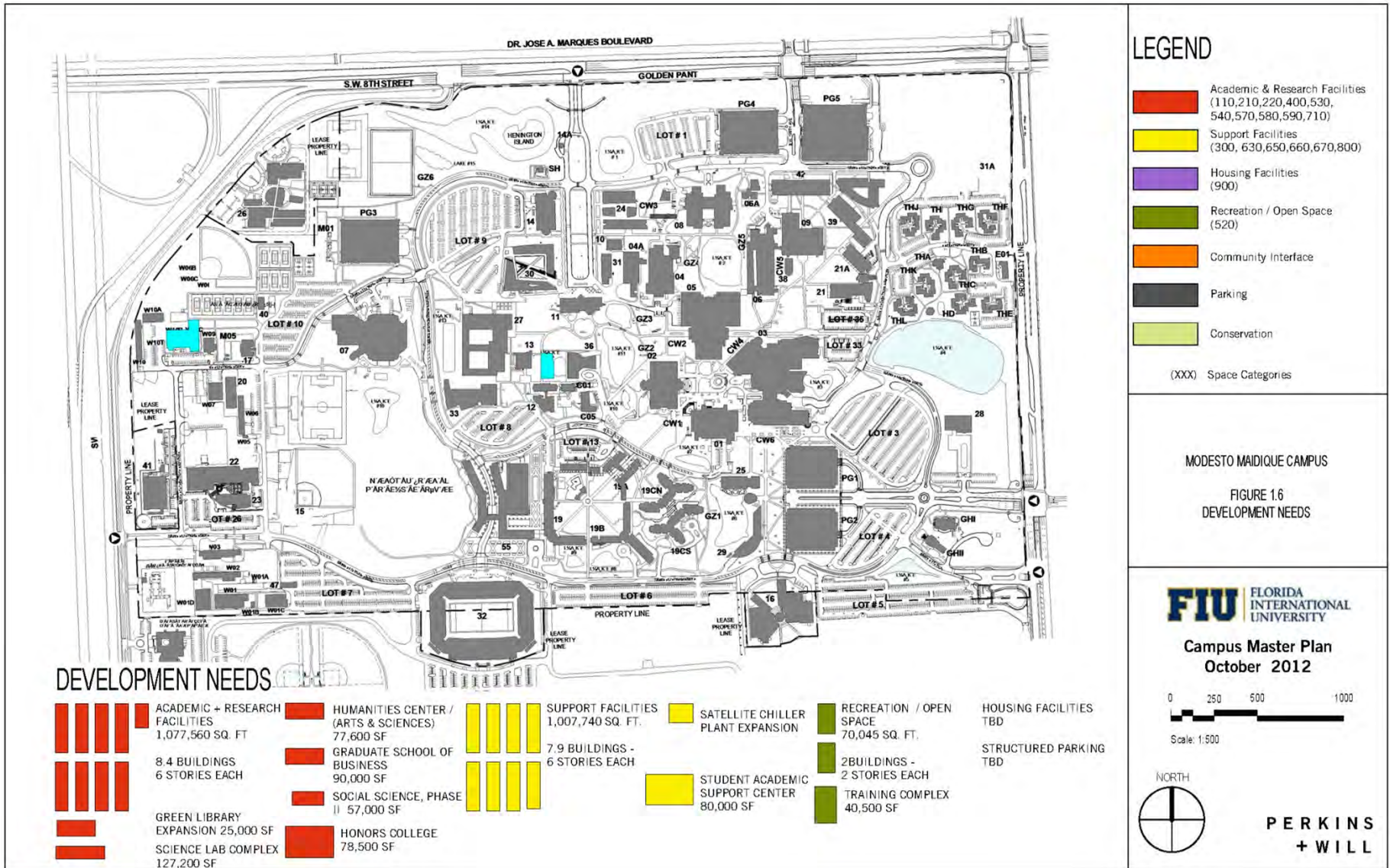
University Enrollment By Campus	CURRENT (2011)		2015		2020		2035 (Strategic plan)	
	HC	FTE	HC	FTE	HC	FTE	HC	FTE
MMC-Total								
Enrollment	33,199	19,417	36,084	22,139	37,719	24,650	48,750	34,339
Undergraduate	27,662	15,412	29,816	17,461	31,004	19,489	40,078	27,726
Graduate	5,537	4,005	6,268	4,678	6,715	5,161	8,672	6,613
BBC- Total								
Enrollment	7,273	2,895	7,838	3,267	9,055	3,906	16,000	5,238
Undergraduate	6,713	2,606	7,236	2,950	8,359	3,526	14,769	4,743
Graduate	560	289	602	317	696	380	1,231	495
EEC Total								
Enrollment	2,456	1,055	2,647	1,188	2,918	1,379	3,552	1,894
Undergraduate	1,942	864	2,093	979	2,302	1,137	2,799	1,569
Graduate	514	191	554	209	616	242	753	325
On-Line Total								
Enrollment	14,998	5,985	16,166	6,742	22,707	9,742	31,318	11,326
Undergraduate	13,202	4,997	14,230	5,663	19,996	8,182	27,582	9,516
Graduate	1,796	988	1,936	1,079	2,711	1,560	3,736	1,810
University Total	57,926	29,352	62,735	33,336	72,399	39,677	99,620	52,797

Key Assumptions/Observations:

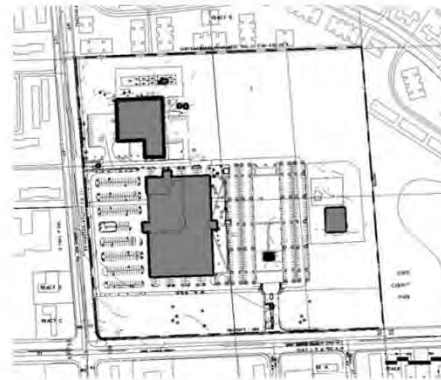
- %FTE vs HC does not increase substantively (HC may be counted more than once)
- Aggressive growth continues, nearly doubling face to face FTE
- E-learning increase from roughly 1/4 to 1/3 total enrollment
- Modest EEC growth, +25% at MMC, +50% at BBC

Future Development: Planning Elements

Modesto Maidique- Development Needs Diagram



Engineering Center Campus-Development Needs Diagram



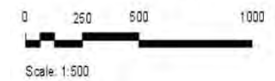
LEGEND

- Academic & Research Facilities
(110,210,220,400,530,540,570,580,590,710)
 - Support Facilities
(300, 630,650,660,670,800)
 - Housing Facilities
(900)
 - Recreation / Open Space
(520)
 - Community Interface
 - Parking
 - Conservation
- (XXX) Space Categories

ENGINEERING CENTER CAMPUS
FIGURE 2.3
DEVELOPMENT NEEDS

FIU FLORIDA INTERNATIONAL UNIVERSITY

Campus Master Plan
October 2012



**PERKINS
+ WILL**

DEVELOPMENT NEEDS

ACADEMIC + RESEARCH FACILITIES
NO ADDITIONAL SPACE NEEDED

ENGINEERING BUILDING
27,840 SF

SUPPORT FACILITIES
22,000 SQ. FT.

0.2 BUILDINGS - 1 STORY

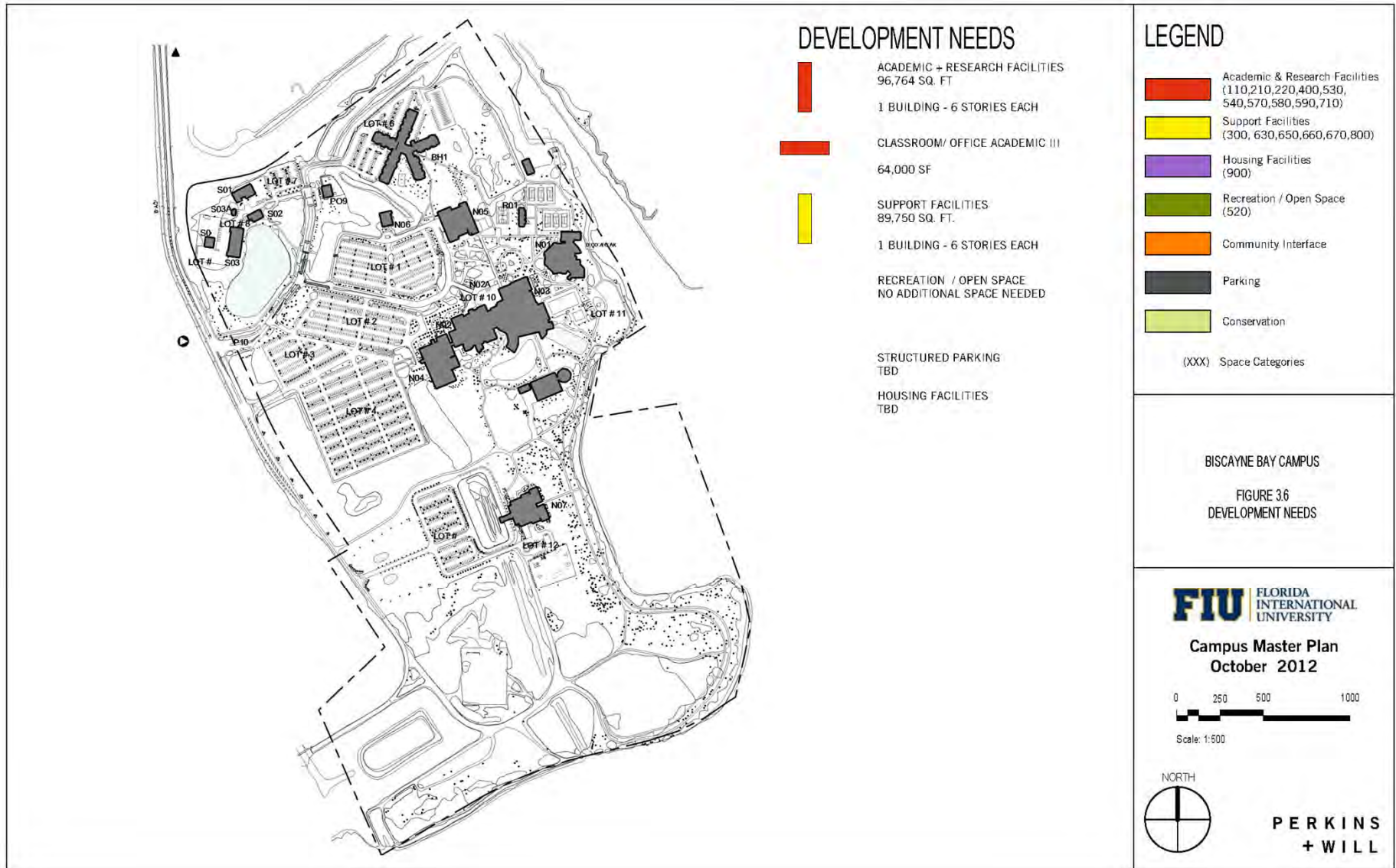
RECREATION / OPEN SPACE
3,200 SQ. FT.

0.1 BUILDING - 1 STORY

HOUSING FACILITIES
TBD

STRUCTURED PARKING
TBD

Biscayne Bay- Development Needs Diagram



DEVELOPMENT NEEDS

- ACADEMIC + RESEARCH FACILITIES
96,764 SQ. FT.
1 BUILDING - 6 STORIES EACH
- CLASSROOM/ OFFICE ACADEMIC III
64,000 SF
- SUPPORT FACILITIES
89,750 SQ. FT.
1 BUILDING - 6 STORIES EACH
- RECREATION / OPEN SPACE
NO ADDITIONAL SPACE NEEDED
- STRUCTURED PARKING
TBD
- HOUSING FACILITIES
TBD

LEGEND

- Academic & Research Facilities
(110,210,220,400,530,
540,570,580,590,710)
- Support Facilities
(300, 630,650,660,670,800)
- Housing Facilities
(900)
- Recreation / Open Space
(520)
- Community Interface
- Parking
- Conservation
- (XXX) Space Categories

BISCAYNE BAY CAMPUS

FIGURE 3.6
DEVELOPMENT NEEDS

FIU FLORIDA
INTERNATIONAL
UNIVERSITY

Campus Master Plan
October 2012

0 250 500 1000

Scale: 1:500



**PERKINS
+ WILL**

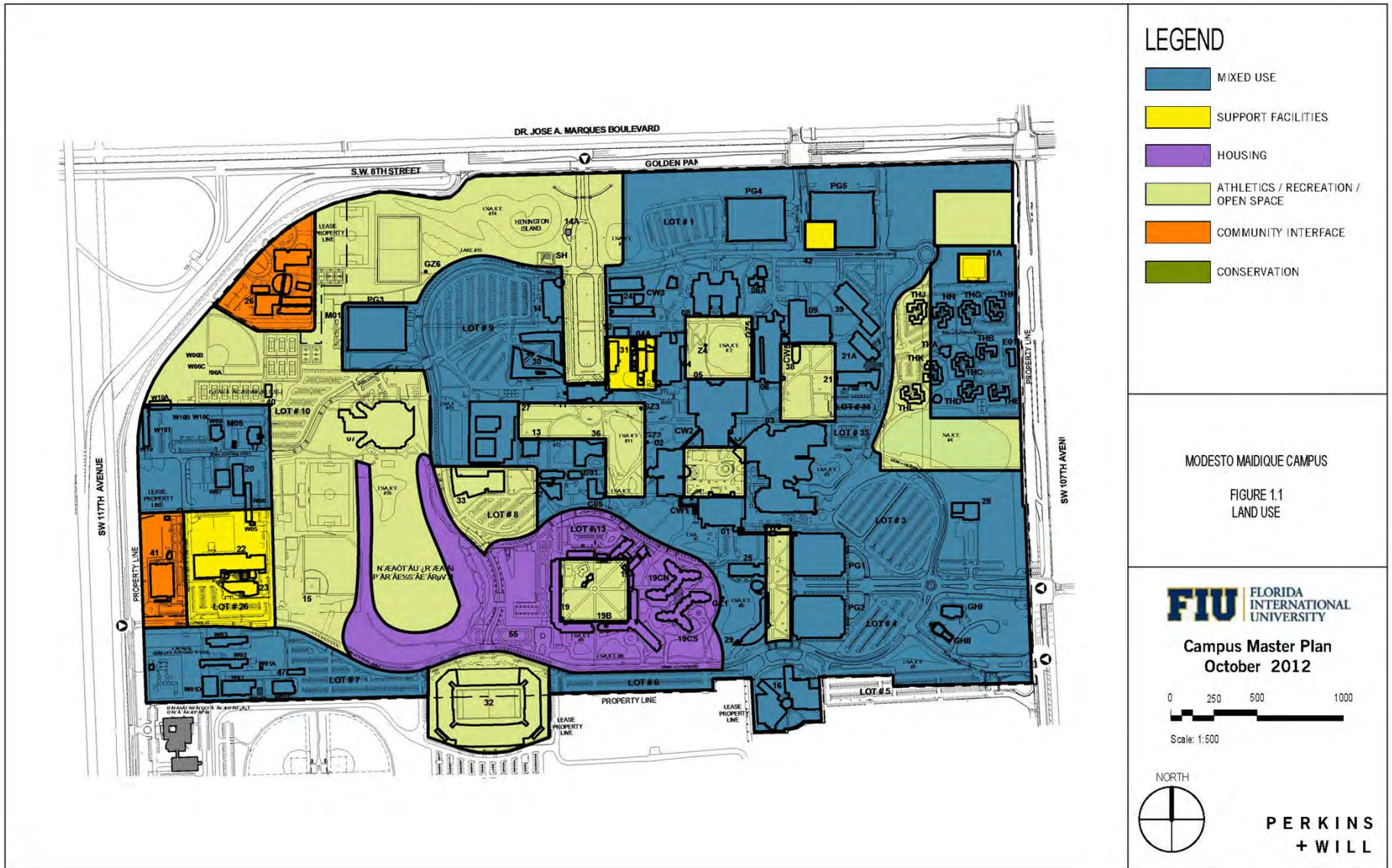
Future Development: Planning Elements

Modesto Maidique Campus

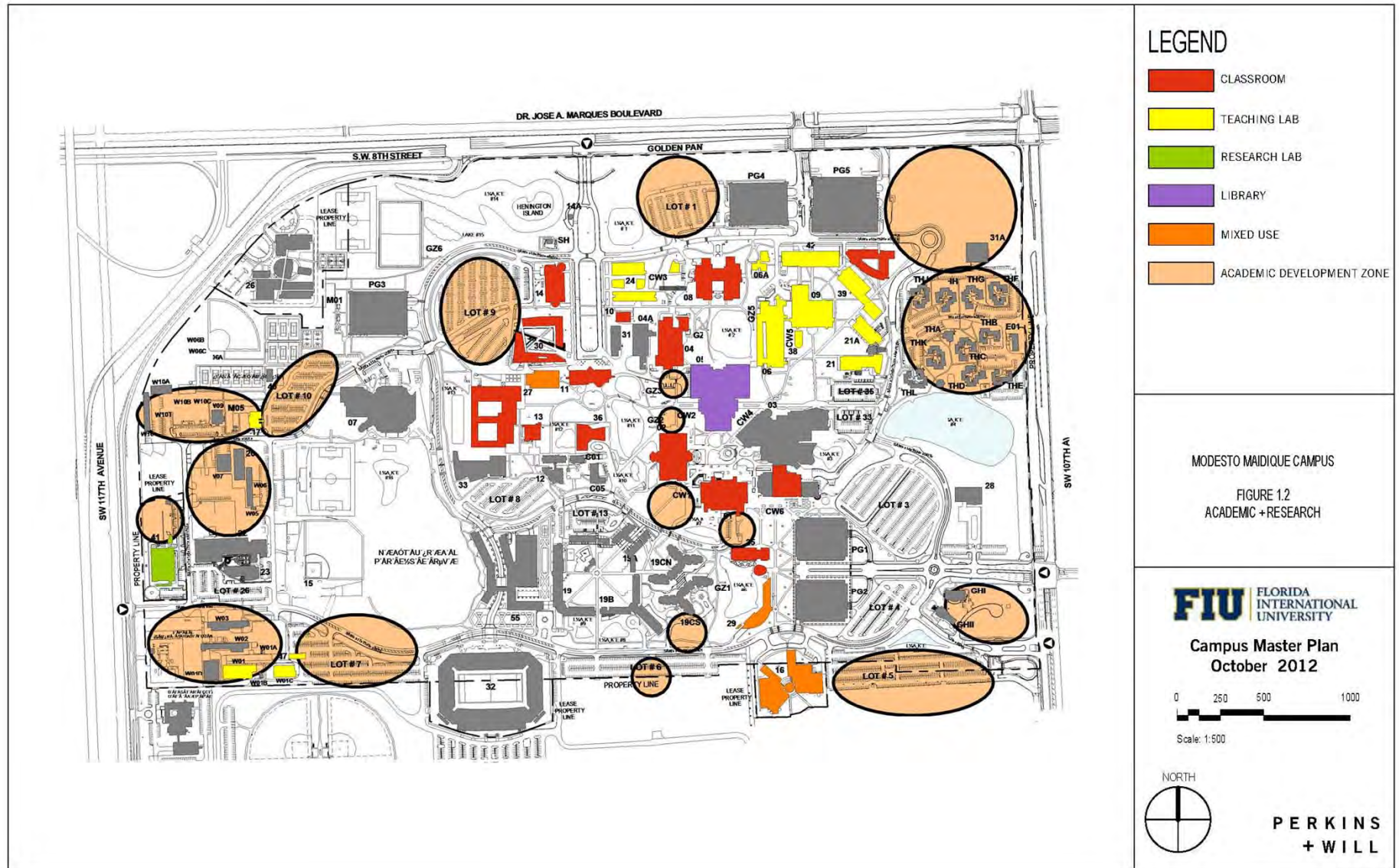
Urban Design Analysis - Uses



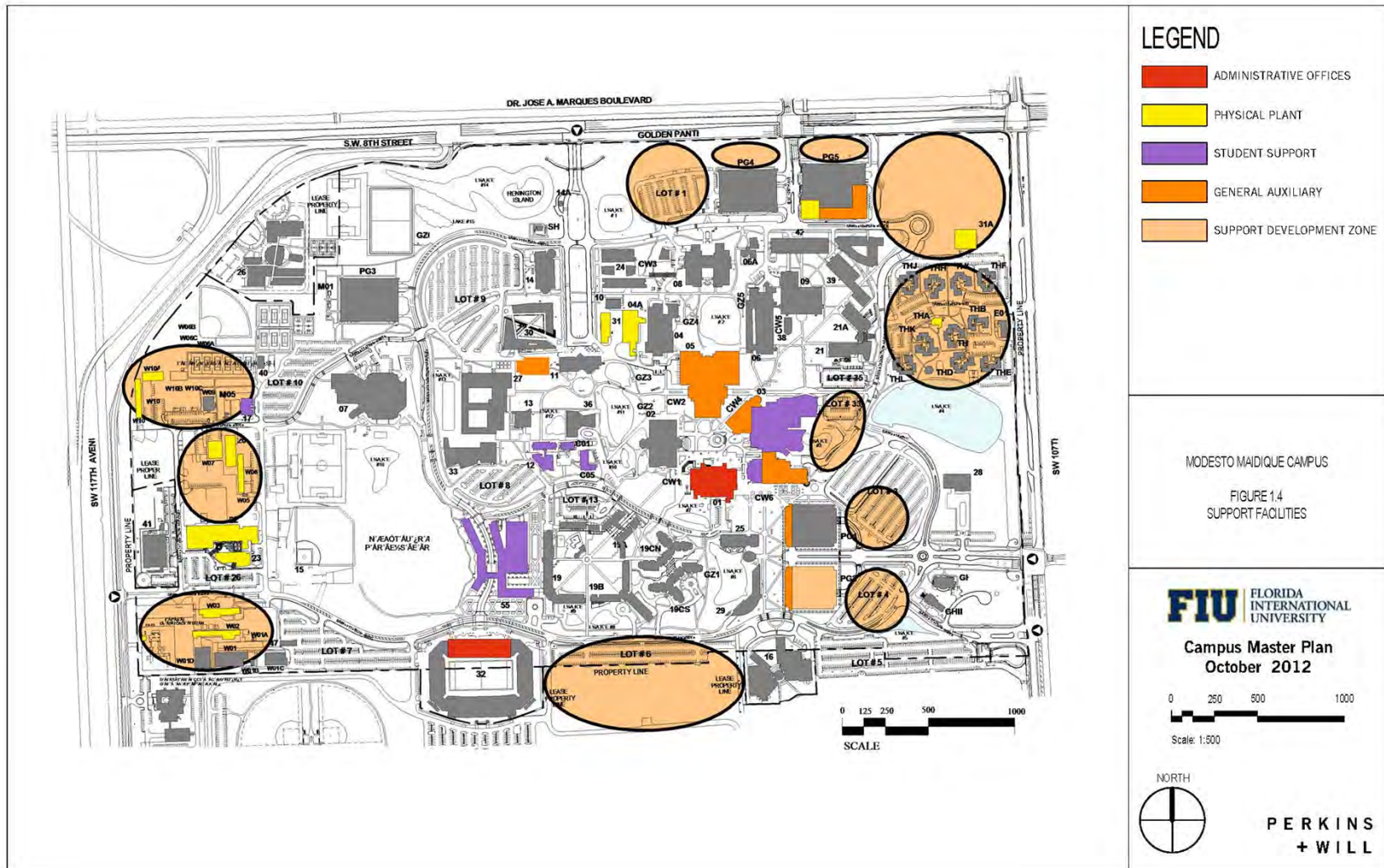
Modesto Maidique- Land Use



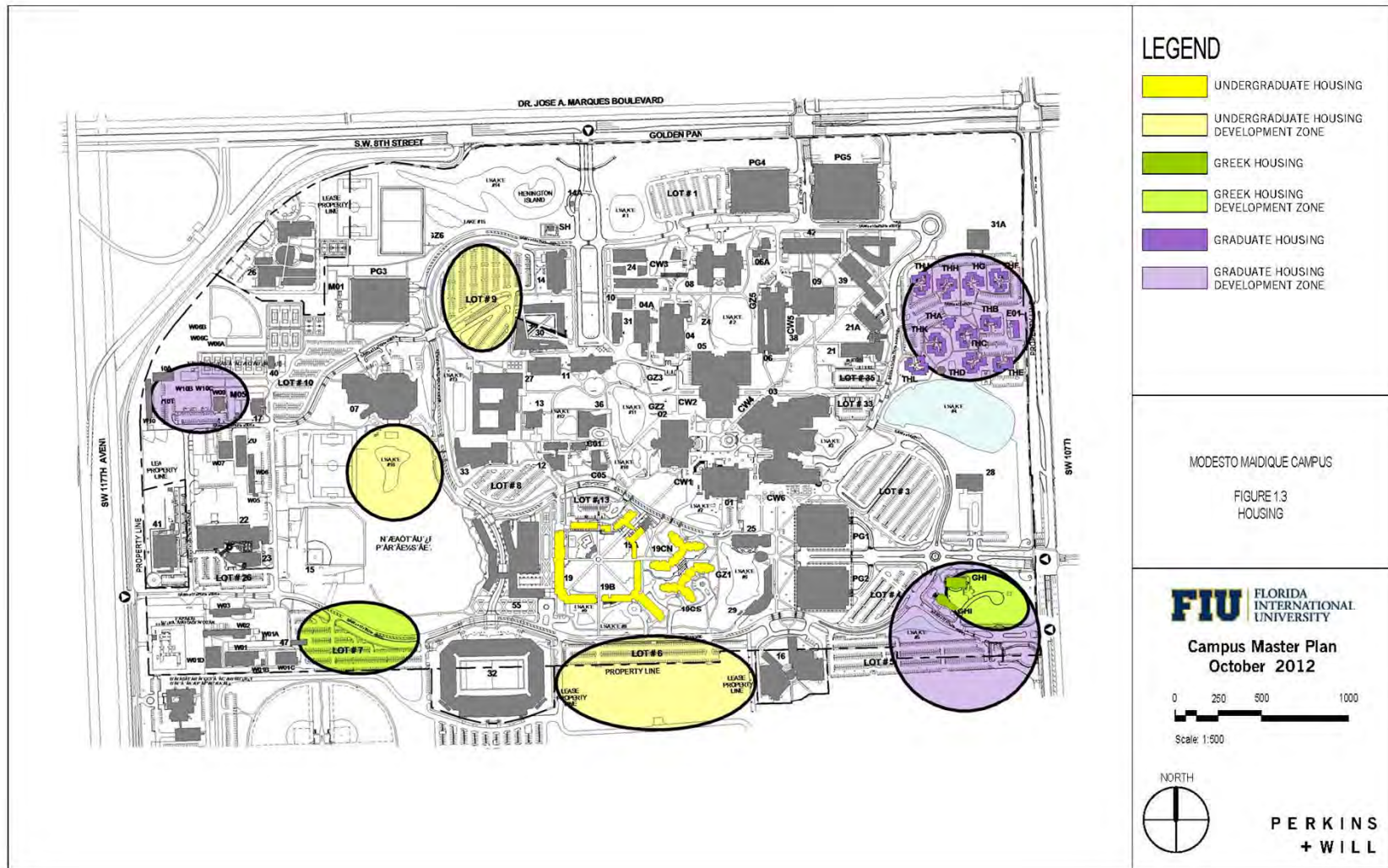
Modesto Maidique- Academic - Research



Modesto Maidique- Support

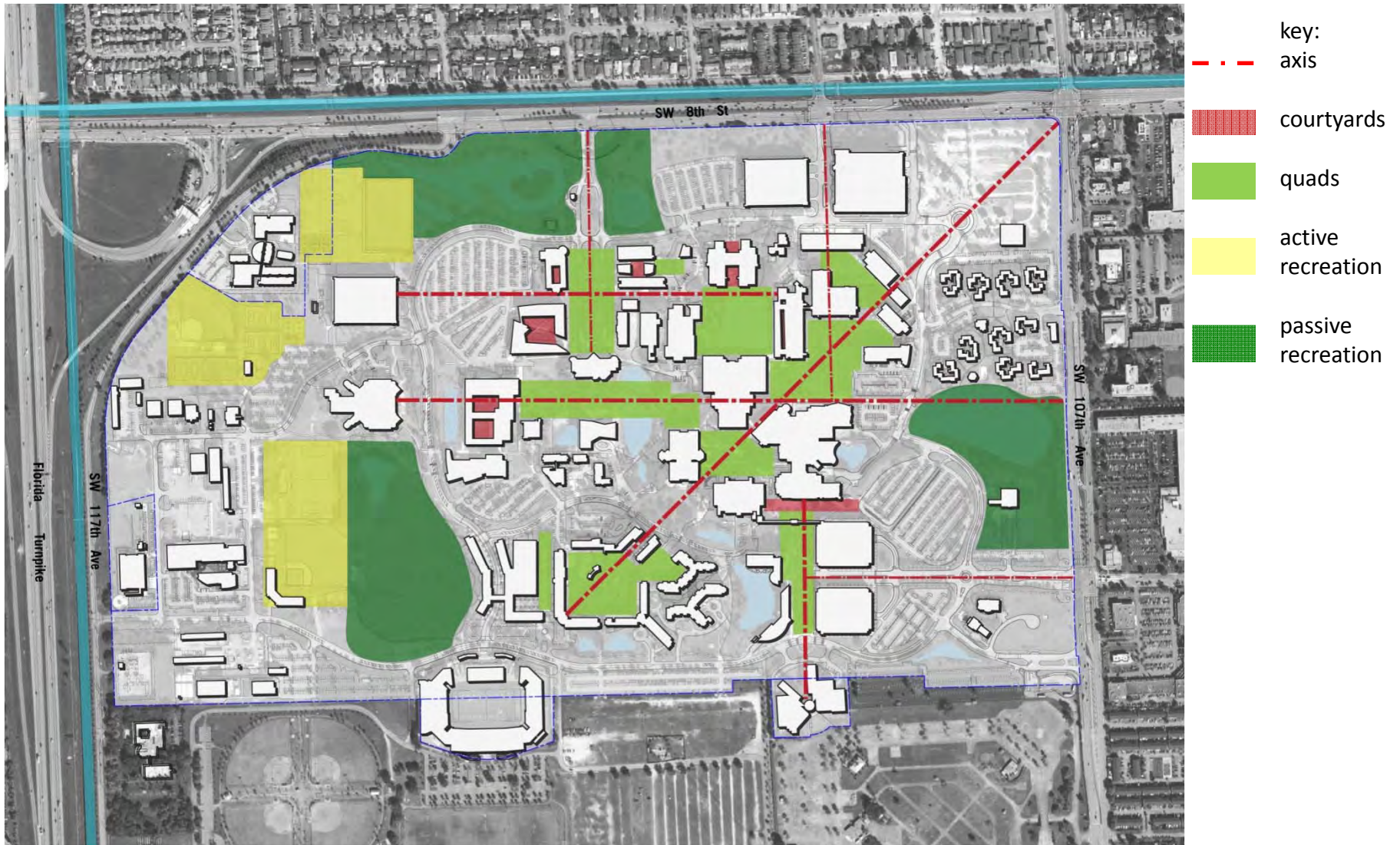


Modesto Maidique - Housing

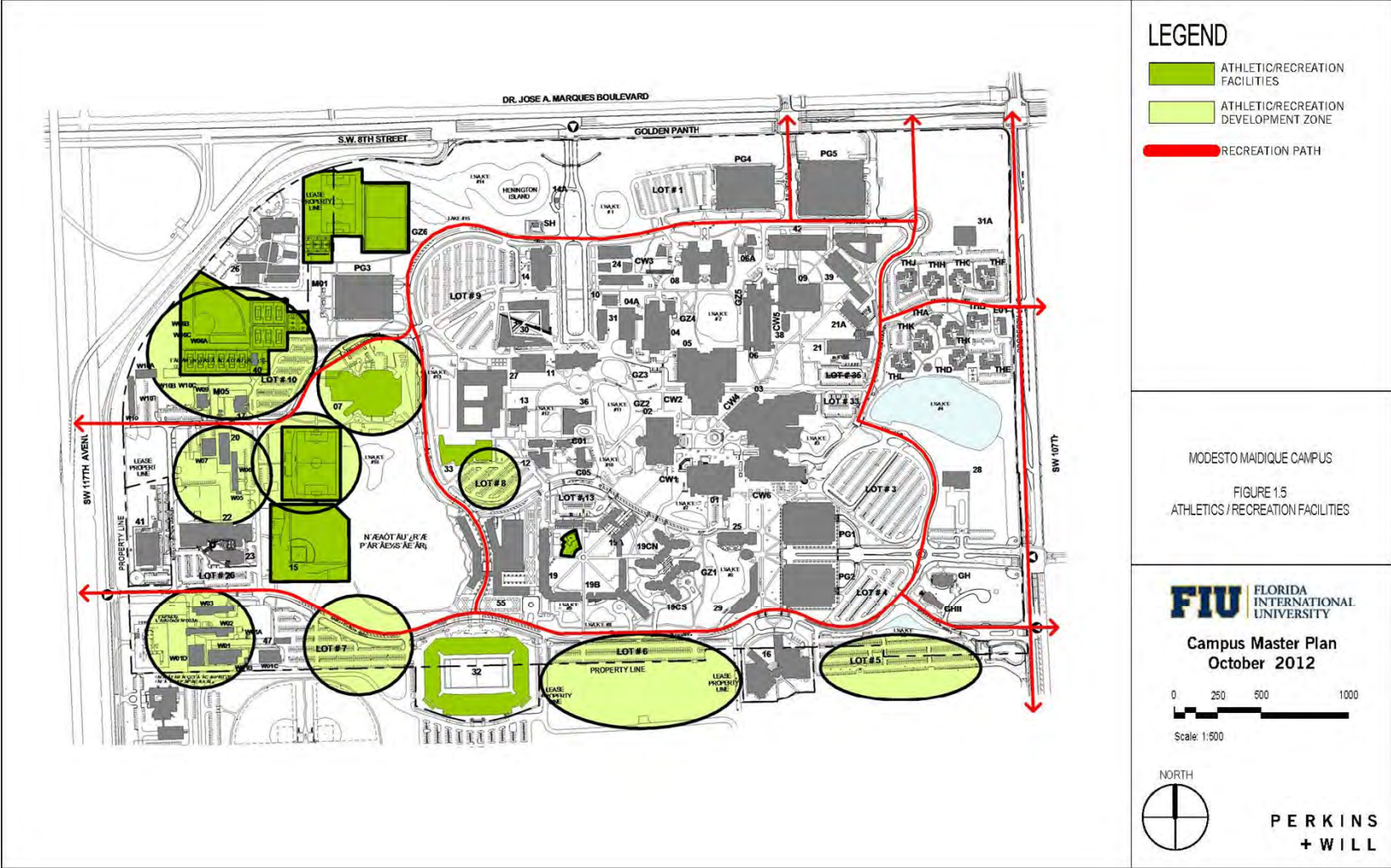


Modesto Maidique Campus

Urban Design Analysis - Openspace



Modesto Maidique - Athletics/ Recreation Facilities



- LEGEND**
- ATHLETIC/RECREATION FACILITIES
 - ATHLETIC/RECREATION DEVELOPMENT ZONE
 - RECREATION PATH

MODESTO MAIDIQUE CAMPUS
 FIGURE 1.5
 ATHLETICS / RECREATION FACILITIES

FIU FLORIDA INTERNATIONAL UNIVERSITY

Campus Master Plan
 October 2012

0 250 500 1000

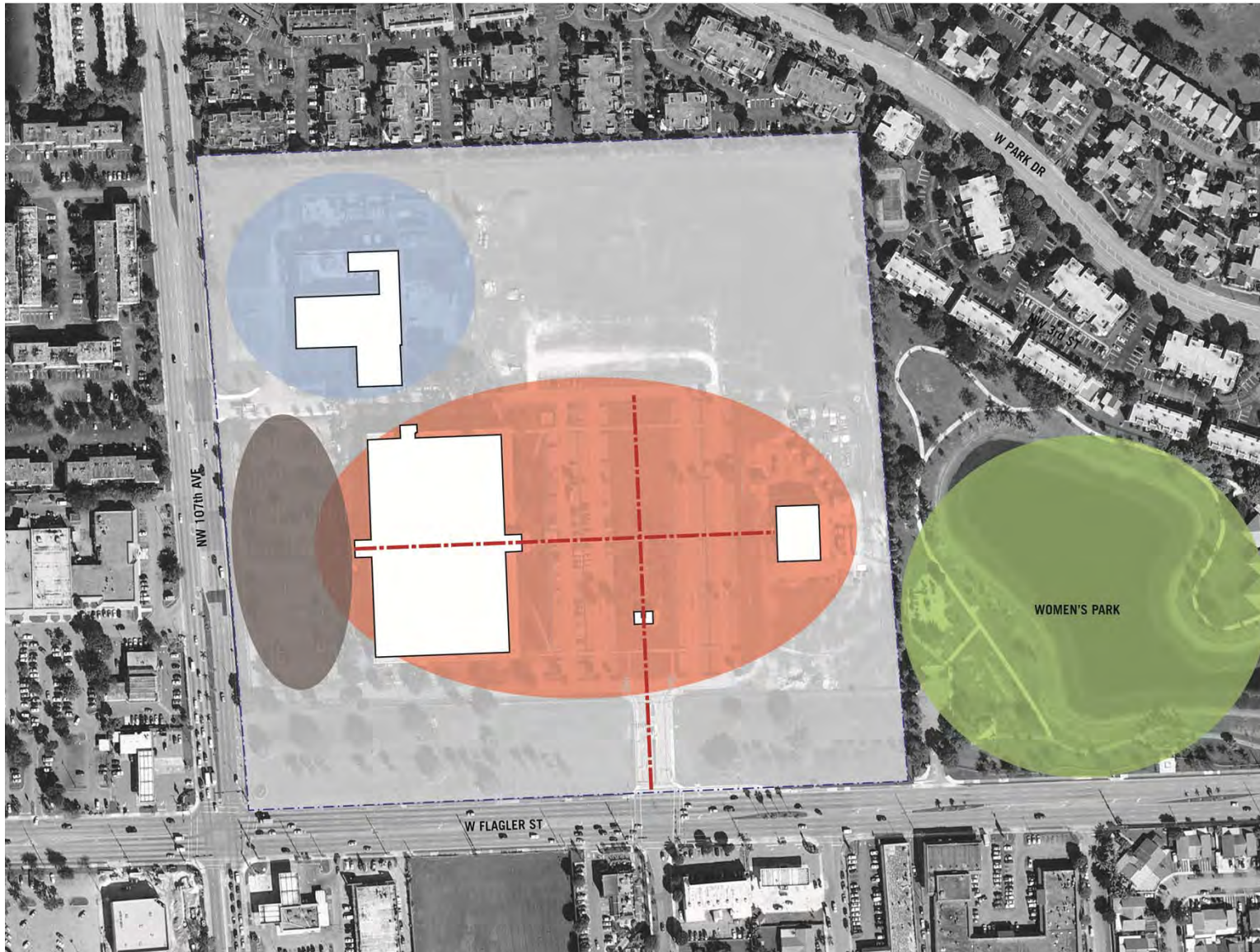
Scale: 1:500



PERKINS + WILL

Engineering Center

Urban Design Analysis - Uses



- key:
- axis
 - academic & research
 - student life & housing
 - support & infrastructure
 - parking

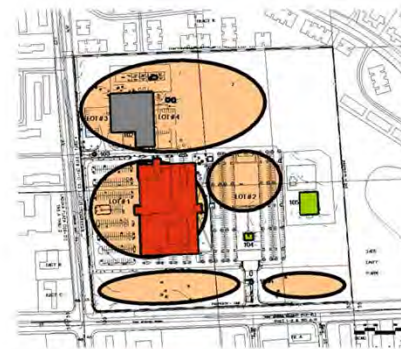
Engineering Center- Land Use/ Academic - Research



① ENGINEERING CENTER CAMPUS - LAND USE
1" = 500'

LEGEND

- MIXED USE
- SUPPORT FACILITIES
- HOUSING
- ATHLETICS / RECREATION / OPEN SPACE
- COMMUNITY INTERFACE
- CONSERVATION



② ENGINEERING CENTER CAMPUS - ACADEMIC/RESEARCH
1" = 500'

LEGEND

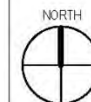
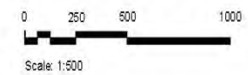
- CLASSROOM
- TEACHING LAB
- RESEARCH LAB
- LIBRARY
- MIXED USE
- ACADEMIC DEVELOPMENT ZONE

ENGINEERING CENTER CAMPUS

FIGURE 21
LAND USE +
ACADEMIC + RESEARCH

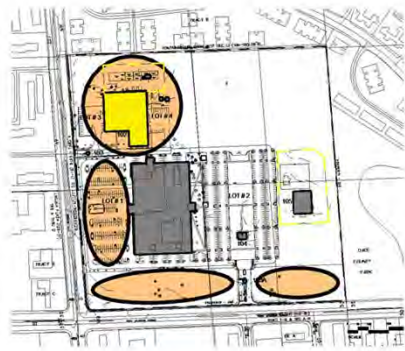
FIU FLORIDA
INTERNATIONAL
UNIVERSITY

Campus Master Plan
October 2012



**PERKINS
+ WILL**

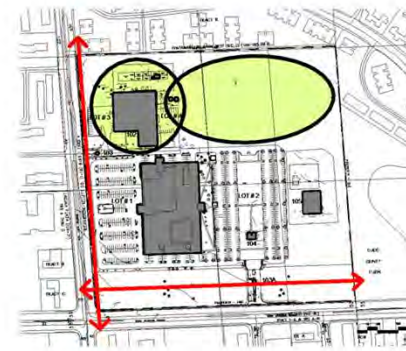
Engineering Center- Support/ Athletics- Recreation



① ENGINEERING CENTER CAMPUS-SUPPORT FACILITIES
1"=500

LEGEND

- ADMINISTRATIVE OFFICES
- PHYSICAL PLANT
- STUDENT SUPPORT
- GENERAL AUXILIARY
- SUPPORT DEVELOPMENT ZONE



② ENGINEERING CENTER CAMPUS-ATHLETICS/RECREATION FACILITIES
1"=500

LEGEND

- ATHLETIC/RECREATION FACILITIES
- ATHLETIC/RECREATION DEVELOPMENT ZONE
- RECREATION PATH

ENGINEERING CENTER CAMPUS

FIGURE 2.2
SUPPORT FACILITIES +
ATHLETICS / RECREATION FACILITIES

FIU FLORIDA
INTERNATIONAL
UNIVERSITY

Campus Master Plan
October 2012

0 250 500 1000

Scale: 1:500



PERKINS
+ WILL

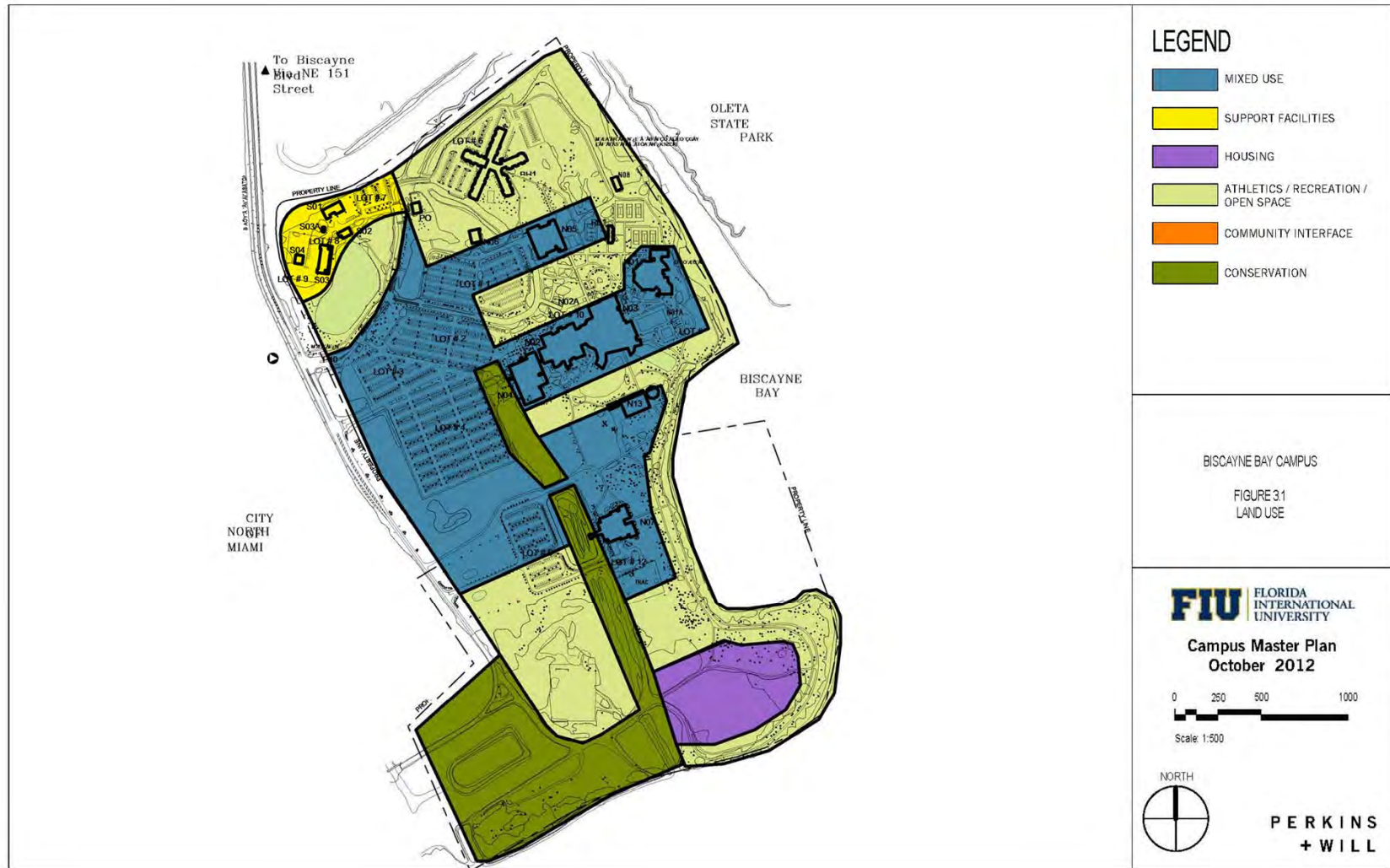
Biscayne Bay Campus

Urban Design Analysis - Uses

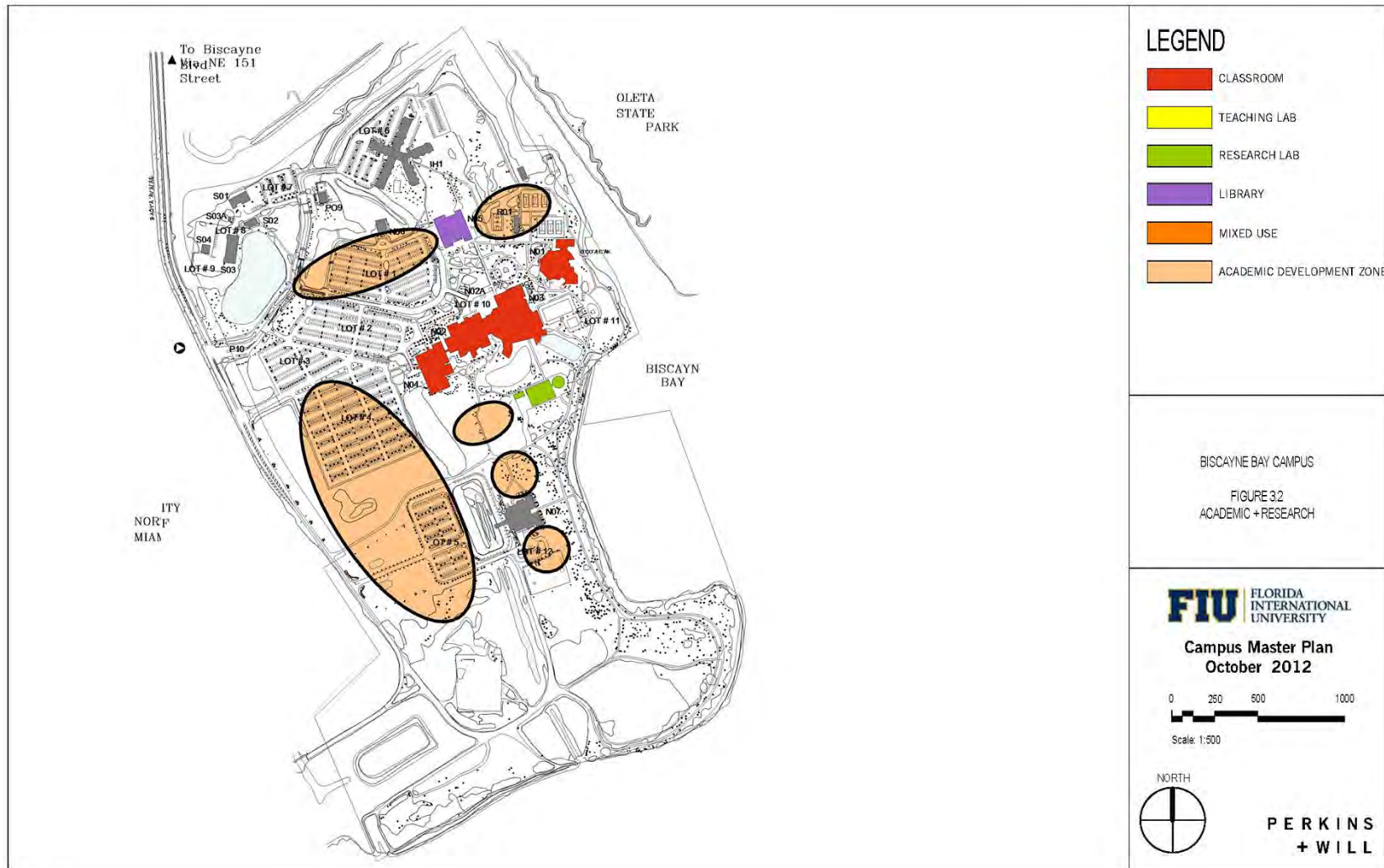


- key:
- · — axis
 - academic & research
 - student life & housing
 - support & infrastructure
 - parking

Biscayne Bay- Land Use



Biscayne Bay- Academic- Research



Biscayne Bay- Support



Biscayne Bay- Housing



Biscayne Bay Campus

Urban Design Analysis - Openspace



- key:
- axis
 - courtyards
 - quads
 - active recreation
 - passive recreation

Biscayne Bay- Athletics/ Recreation Facilities



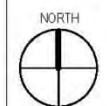
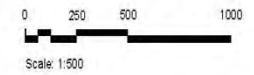
LEGEND

- ATHLETIC/RECREATION FACILITIES
- ATHLETIC/RECREATION DEVELOPMENT ZONE
- RECREATION PATH

BISCAYNE BAY CAMPUS
 FIGURE 35
 ATHLETICS / RECREATION FACILITIES

FIU FLORIDA INTERNATIONAL UNIVERSITY

Campus Master Plan
 October 2012



PERKINS
 + WILL

Next Steps

-Next Steps

- Faculty/Staff Assumptions**
- Research Assumptions**
- Clinical Assumptions**

- Touchstone Meeting –end of October?**

- Concept Themes**
 - Maximize programs at Modesto Maidique Campus**
 - Create “E” center at Biscayne Bay Campus for Education and Environmental Studies**
 - Maximize perimeter partnerships**
 - Other?**