

FLORIDA INTERNATIONAL UNIVERSITY

CAMPUS MASTER PLAN UPDATE 2010-2020

Focus Group 3: Meeting #2

3 OCTOBER 2012

Agenda

- **Homework Summary**
- **Analysis**
 - **2015 Goal**
 - **Context**
 - **Campus Analysis**
 - **Focus Areas:**
 - **Avenues**
 - **Spaces**
 - **Walkways**
 - **Sustainability**
 - **Legibility**
 - **Expansion – Looking South**
 - **Design Guideline Districts**
- **Summary**

Homework Summary

- Strong new architecture complements existing historic structures to create an exciting campus assemblage.
- Increased density at MMC
- Campus as Sculpture Garden / Museum
- Growing residential component at MMC and BBC
- Creating mixed-use elements within buildings
- Sports events bring increasing numbers to our campus
- Medicine is poised to become another such magnet
- Successful outdoor spaces are being developed across all FIU campuses
- FIU campus potential as an outdoor classroom (MMC & BBC)
- Extraordinary site at BBC

FIU

Homework - Strengths



- Traffic congestion and parking challenges are growing steadily
- Several plazas are underutilized and don't respond to the their environments
- Lack of clarity in wayfinding, signage and building labeling
- No single formal space that is “the identity space” – associated with university
- Chaotic use of landscape architecture elements (materials, details, lighting, signage, etc)
- Routes through campus are often indirect and can sometimes be challenging for the handicapped
- Pedestrian linkages are frequently unprotected from sun and rain
- Walkways are often indirect and sometimes insufficiently wide for the traffic
- Pedestrian vs. vehicular conflict with campus loop road
- The physical relationship of the campus precinct to its surrounding can be enhanced (edges & economic development)
- The Nature preserve should be embraced as a teaching facility, cleaned up, and have safe pathways built and lighted.
- BBC approach to campus (front door) is through a sea of parking
- Lack of density at BBC
- Project process

FIU

Homework - Weaknesses



- **Community Context**
 - NYU, University of Pennsylvania, Parsons, Harvard, University of Chicago, MIT
- **Architectural language and scale**
 - Harvard, MIT, University of Cincinnati, Penn
- **Courtyards**
 - Harvard, MIT, Princeton, Pratt, UVA
- **Covered walkways**
 - Universidad Central de Venezuela, Florida Southern College, UVA, Taliesin West, USF - MLK Plaza
- **Memorable Campus Landscapes**
 - Tsinghua University, Stanford, Vassar, Berkeley, Gordon-College-Amphitheater, University-of-Wollongong, BBC-Waterfront, Cornell, UVA
- **Sculpture gardens and botanical gardens**

FIU

Homework – Best Practices



Vanessa M.

“On Wednesdays during the semester check out the Farmer's Market and free yoga classes behind the library facing DM”

Christian W.

Live on-campus if you don't want to deal with parking! You won't need to, everything will be within easy reach and you save gas money

Deuxieme Maison

"Yes, the cube does spin. Students line up during finals week to get good luck for their exams by spinning 'Marty's Cube', created by Tony Rosenthal in 1983. Join the tradition - spin the cube!"

<https://foursquare.com/v/florida-international-university/4b2a3502f964a52012a624e3>

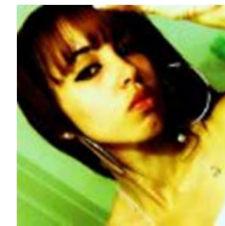


Nicholas D.

“The coolest little wooden chairs that are covered from the sun and rock back and forth are next to the big fountain by the Graham Center. Sit there, take a load off work, or mingle w/ friends.”

PaoPao R.

“The best chilling spots are by the large fountain, the lake near DM & the wooden rocking chairs:



<https://foursquare.com/v/florida-international-university/4b2a3502f964a52012a624e3>



FLORIDA
INTERNATIONAL
UNIVERSITY

Campus Analysis

FIU 2005-2015 Urban Design Element

URBAN DESIGN GOAL:

Florida International University shall create high quality, memorable campus environments suited to education and a sense of collegiality, comprising a compact formal development pattern within a rich outdoor subtropical environment.

- 1.1 Regulating Axis
- 1.2 Campus Spaces
- 1.3 Campus Streets
- 1.4 Campus Edges
- 1.5 Functional Linkages

FIU Campus – Natural Systems

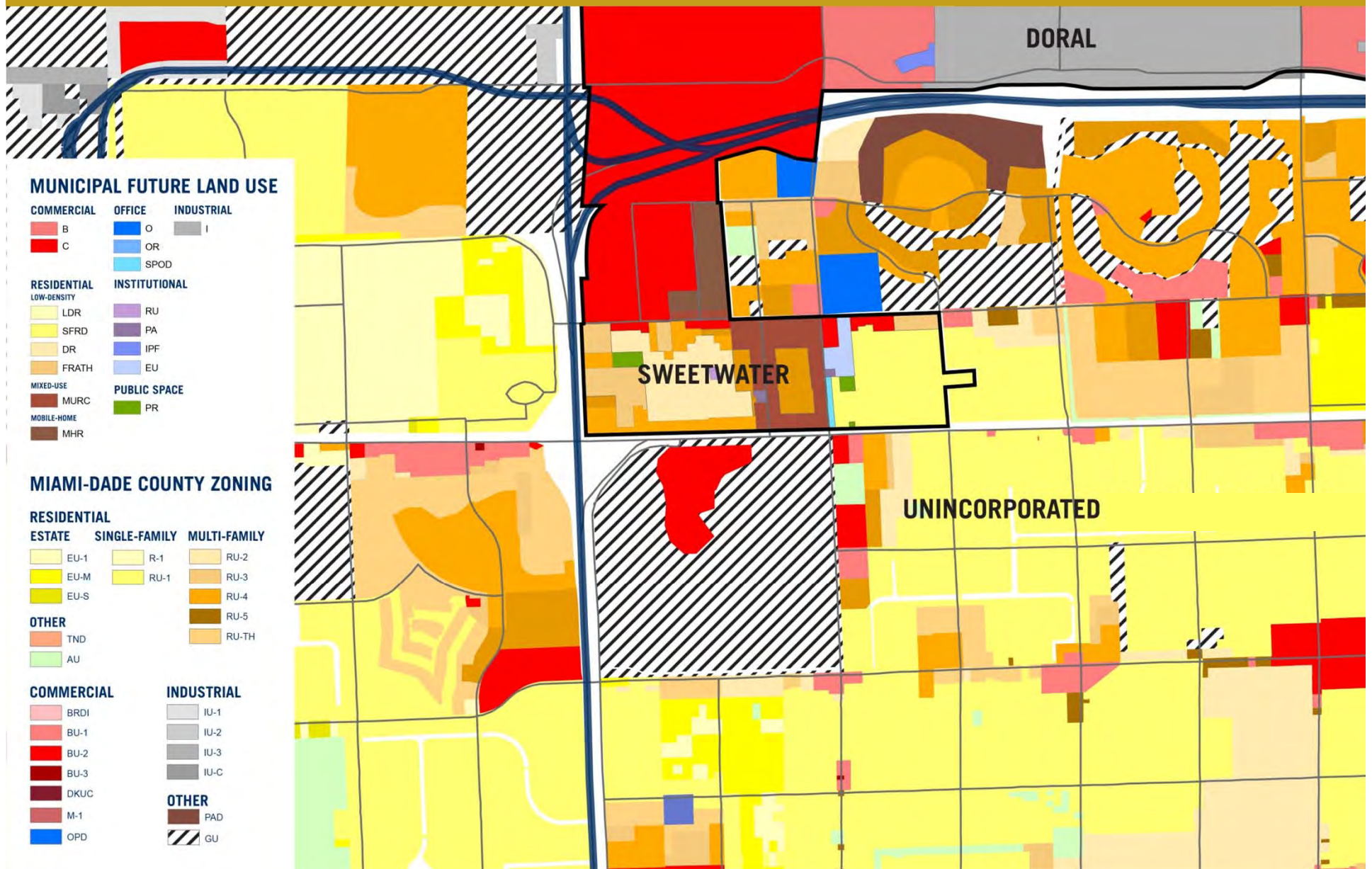


FIU Campus - Location



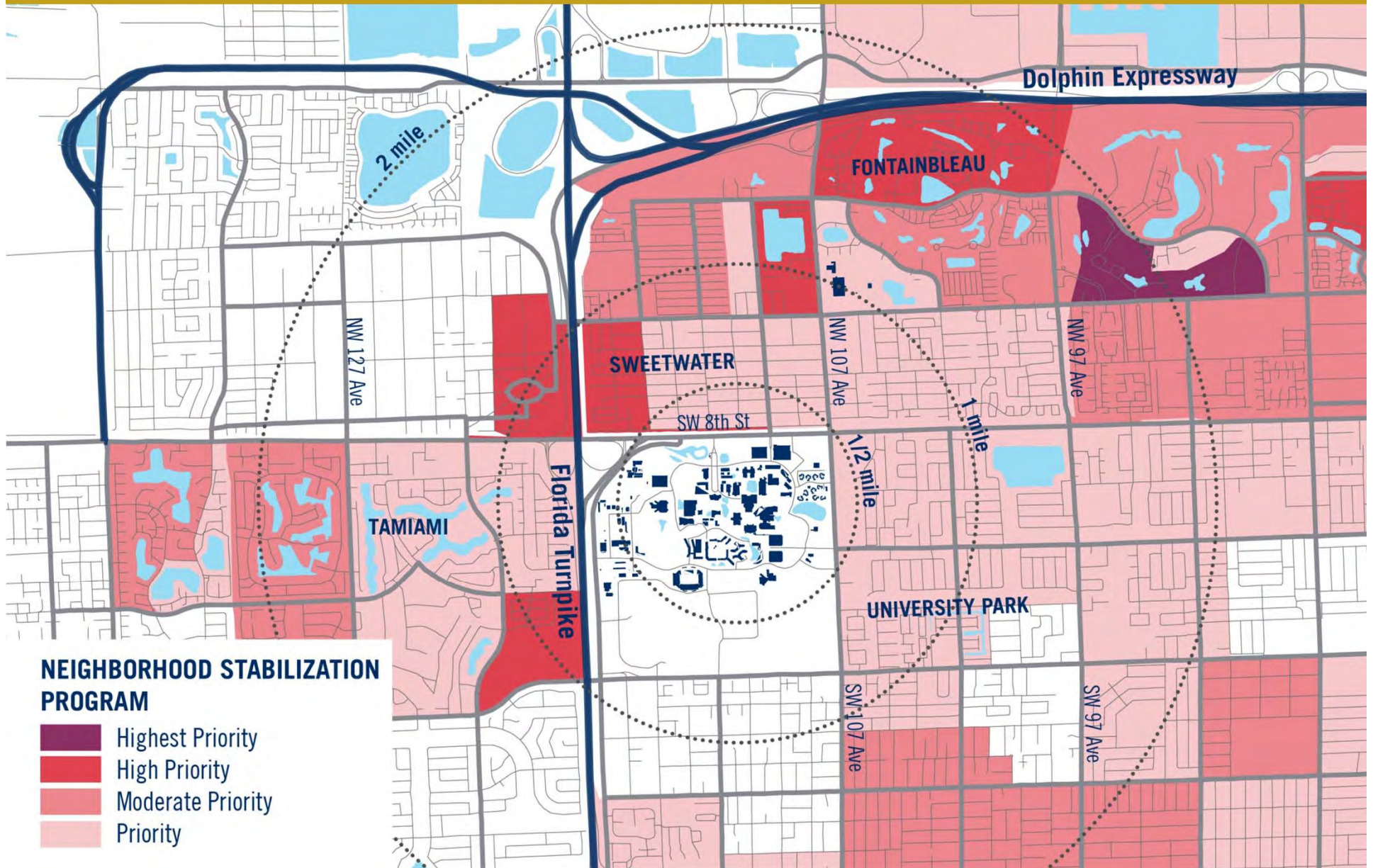
Modesto Maidique Campus & Engineering Center

Context Inventory



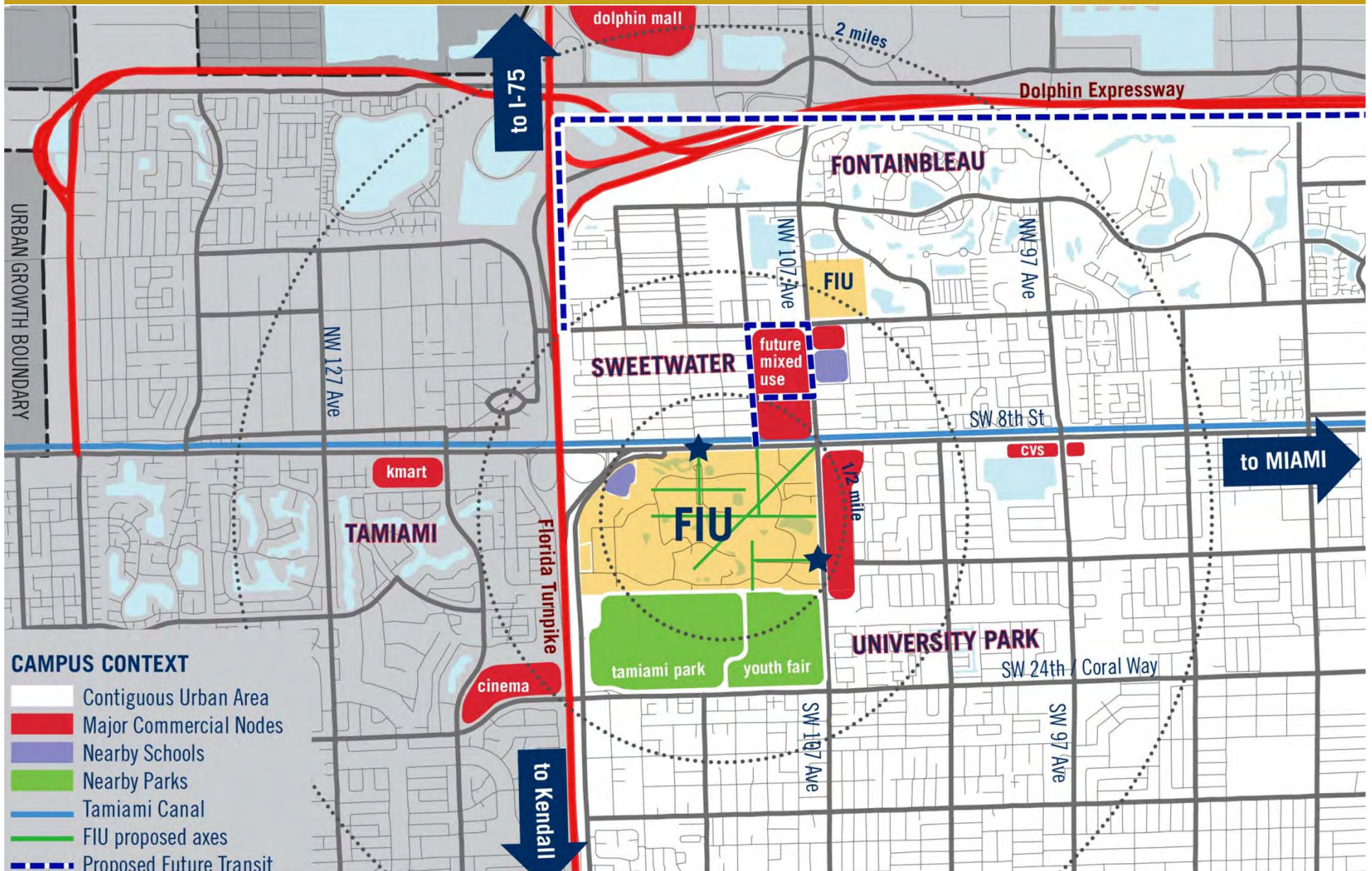
Modesto Maidique Campus & Engineering Center

Context Inventory



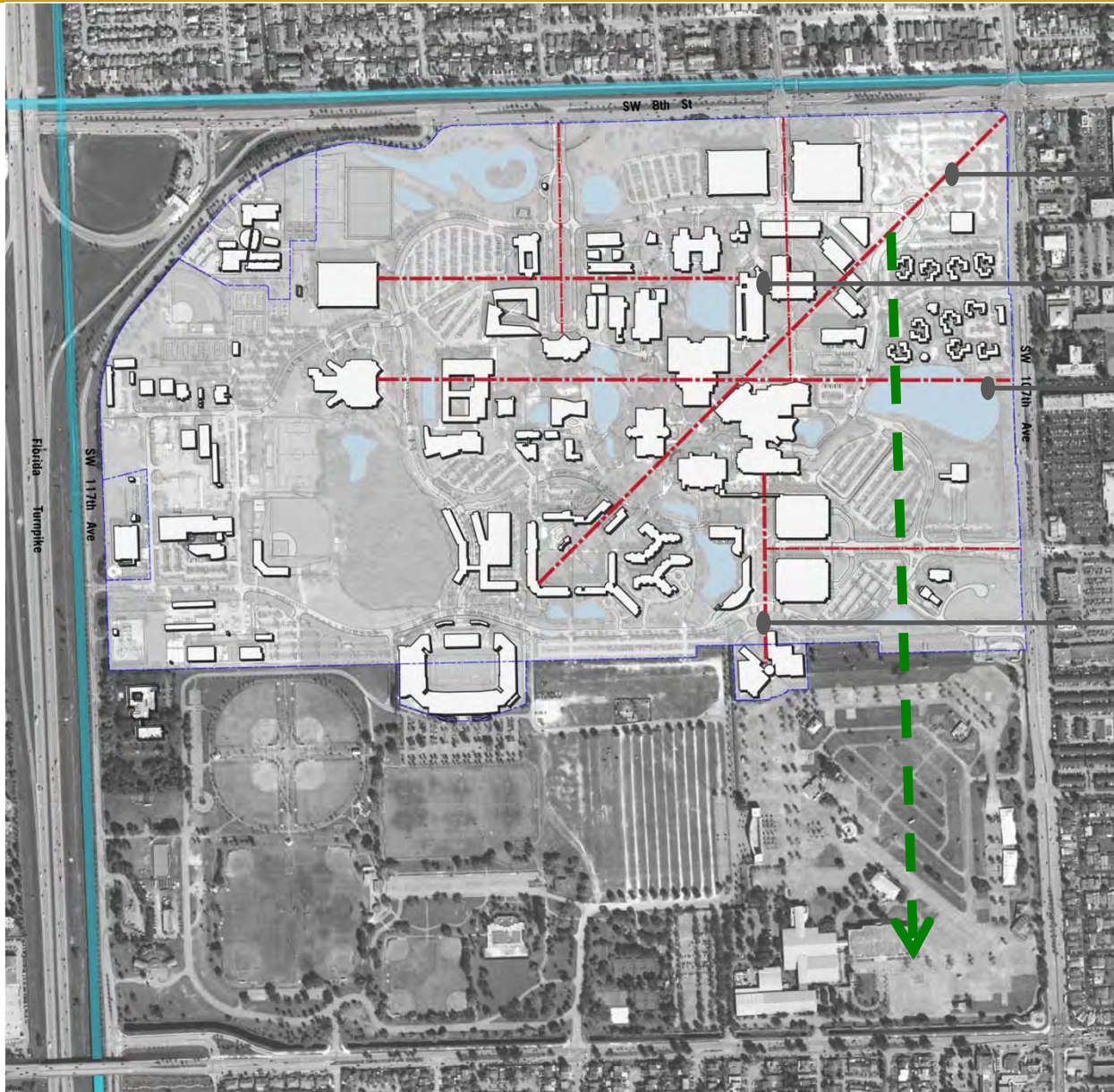
Modesto Maidique Campus & Engineering Center

Context Analysis



Modesto Maidique Campus

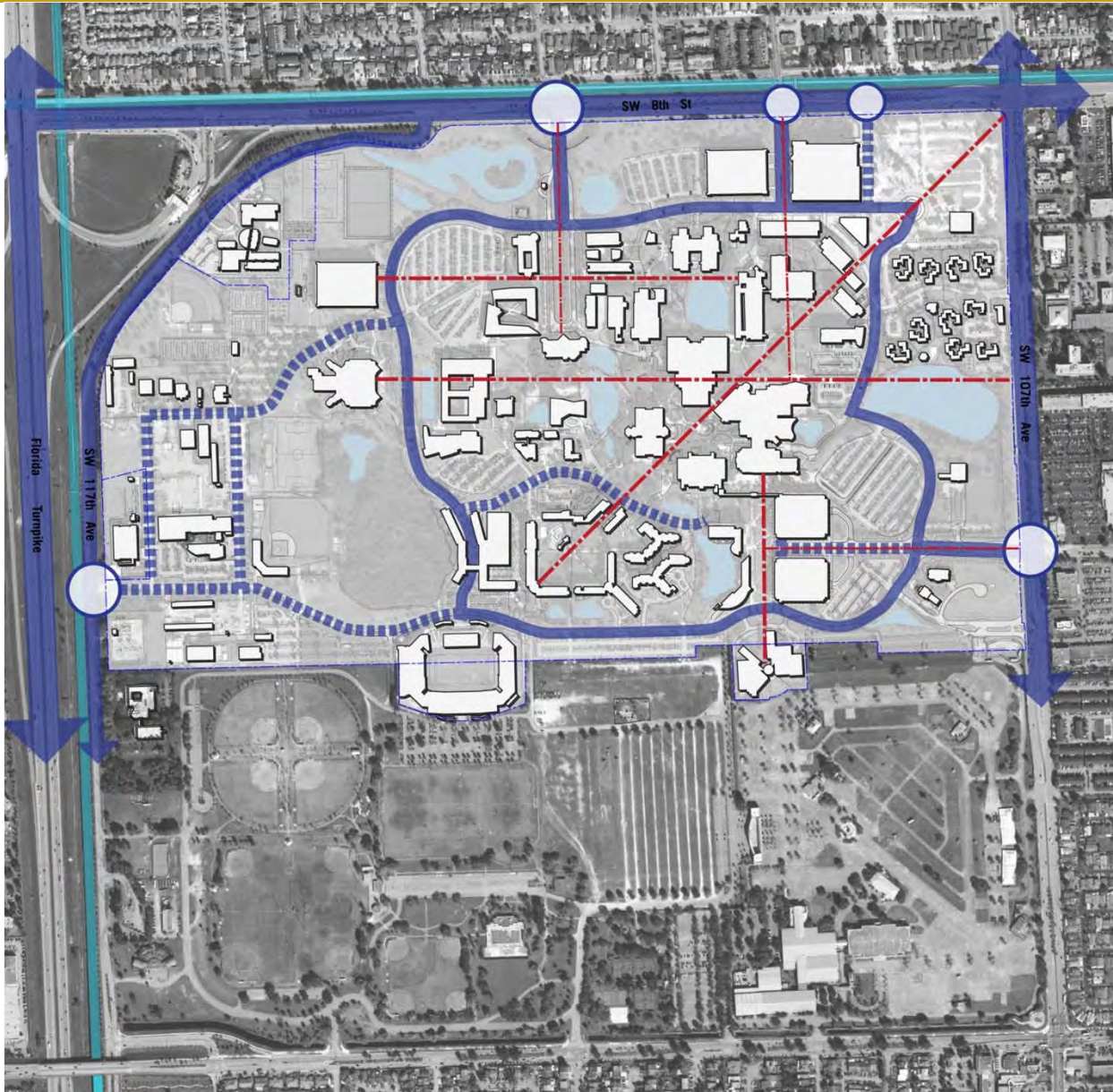
Regulating Axis



- key:
- . - axis
- avenue of the sciences
 - avenue of the professions
 - avenue of the students
 - avenue of the arts

Modesto Maidique Campus

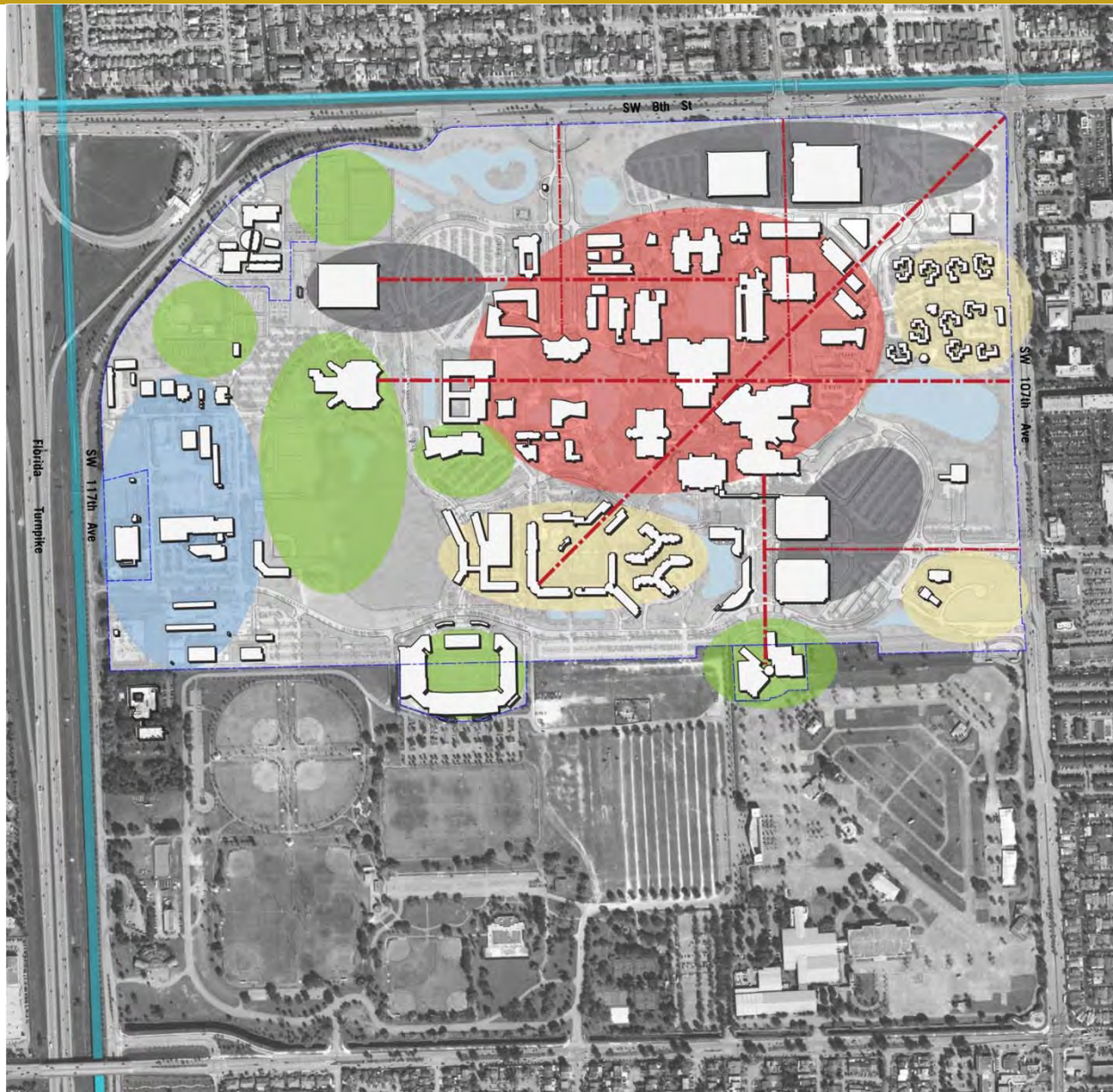
Vehicular Circulation



- key:
- · — axis
 - gateways
 - ▨ major
 - - - minor

Modesto Maidique Campus

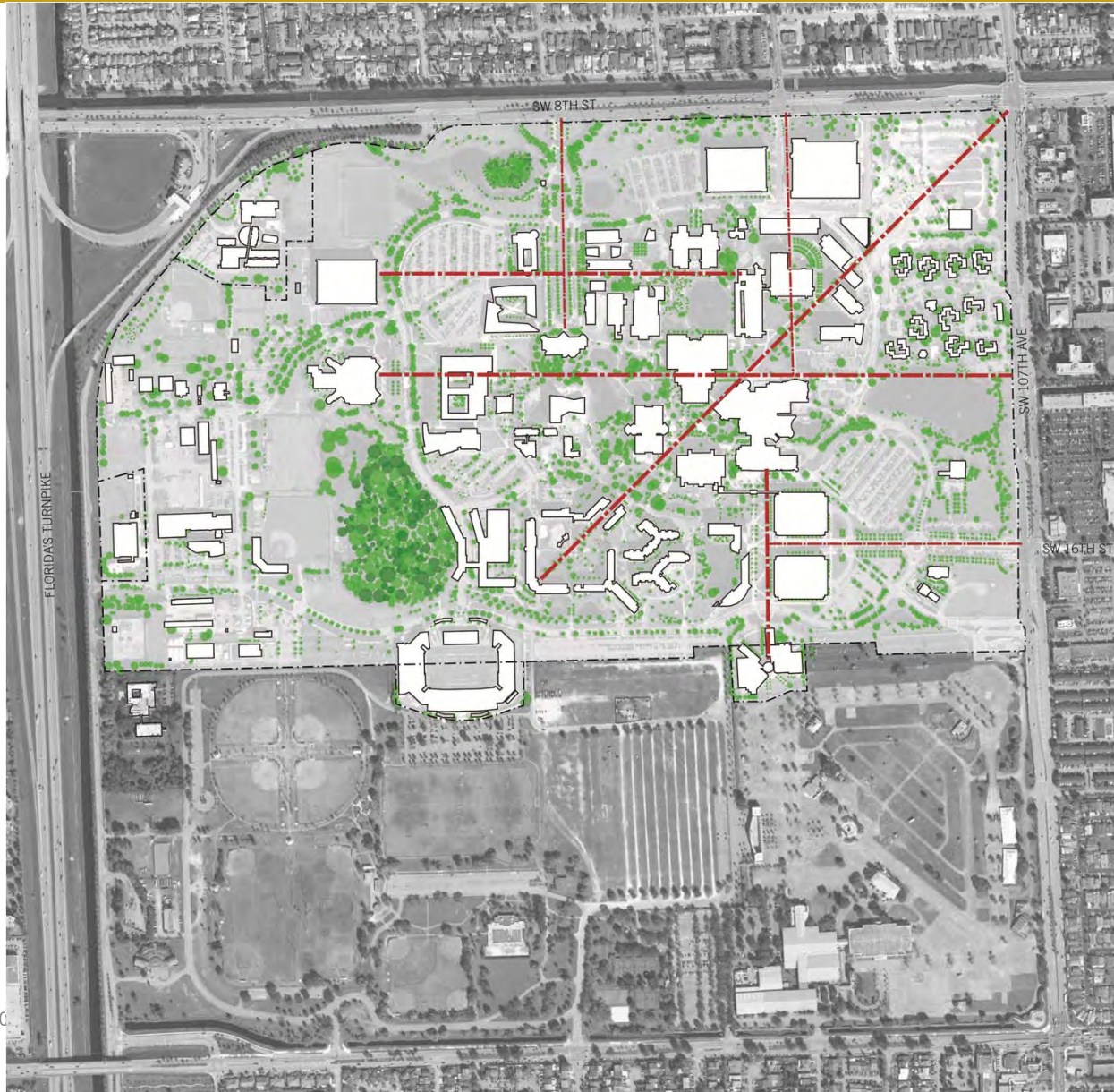
Uses



- key:
- axis
 - academic & research
 - student life & housing
 - support & infrastructure
 - recreation & culture
 - parking

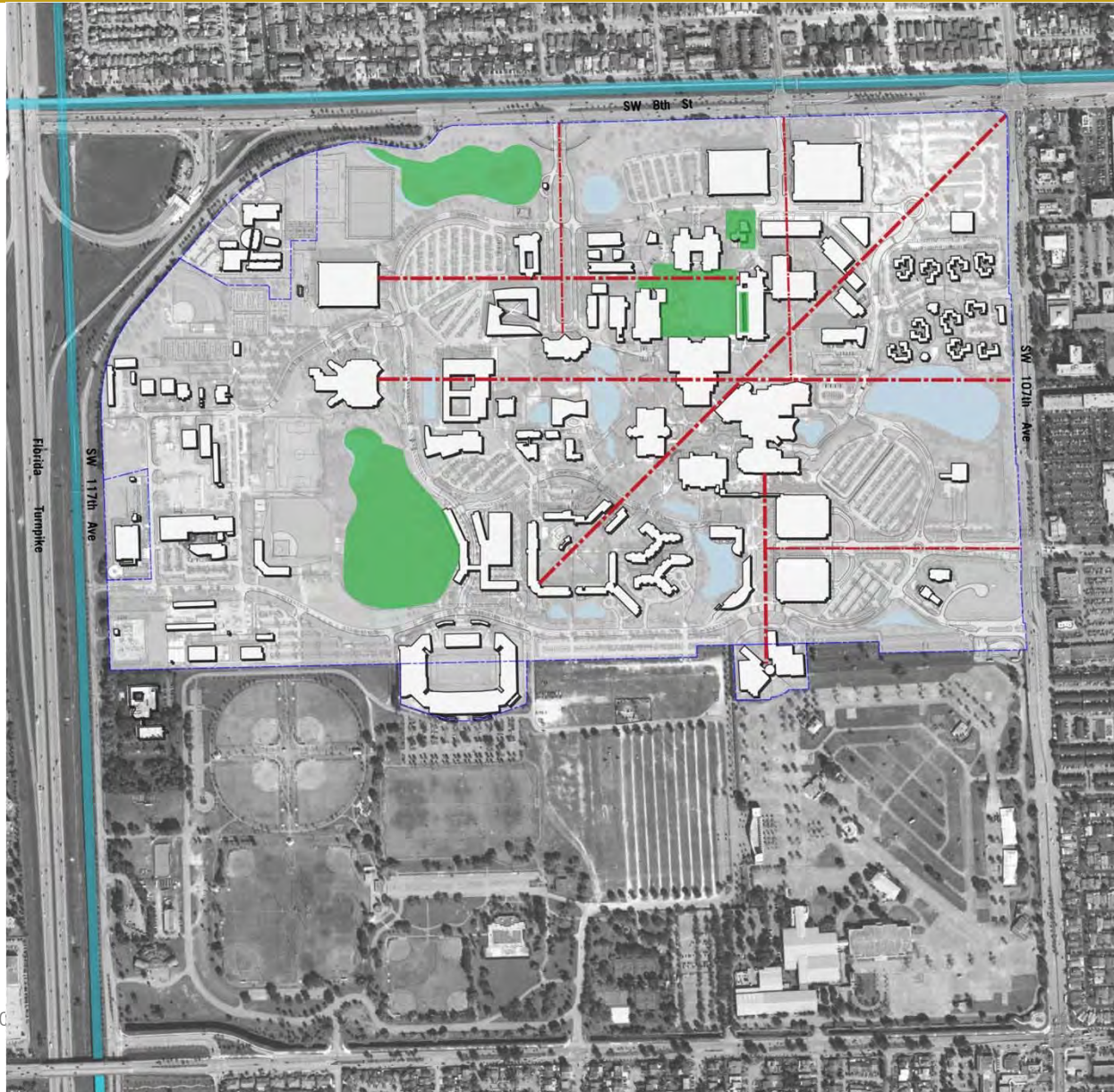
Modesto Maidique Campus

Vegetation



- key:
- · — axis
 - tree cover

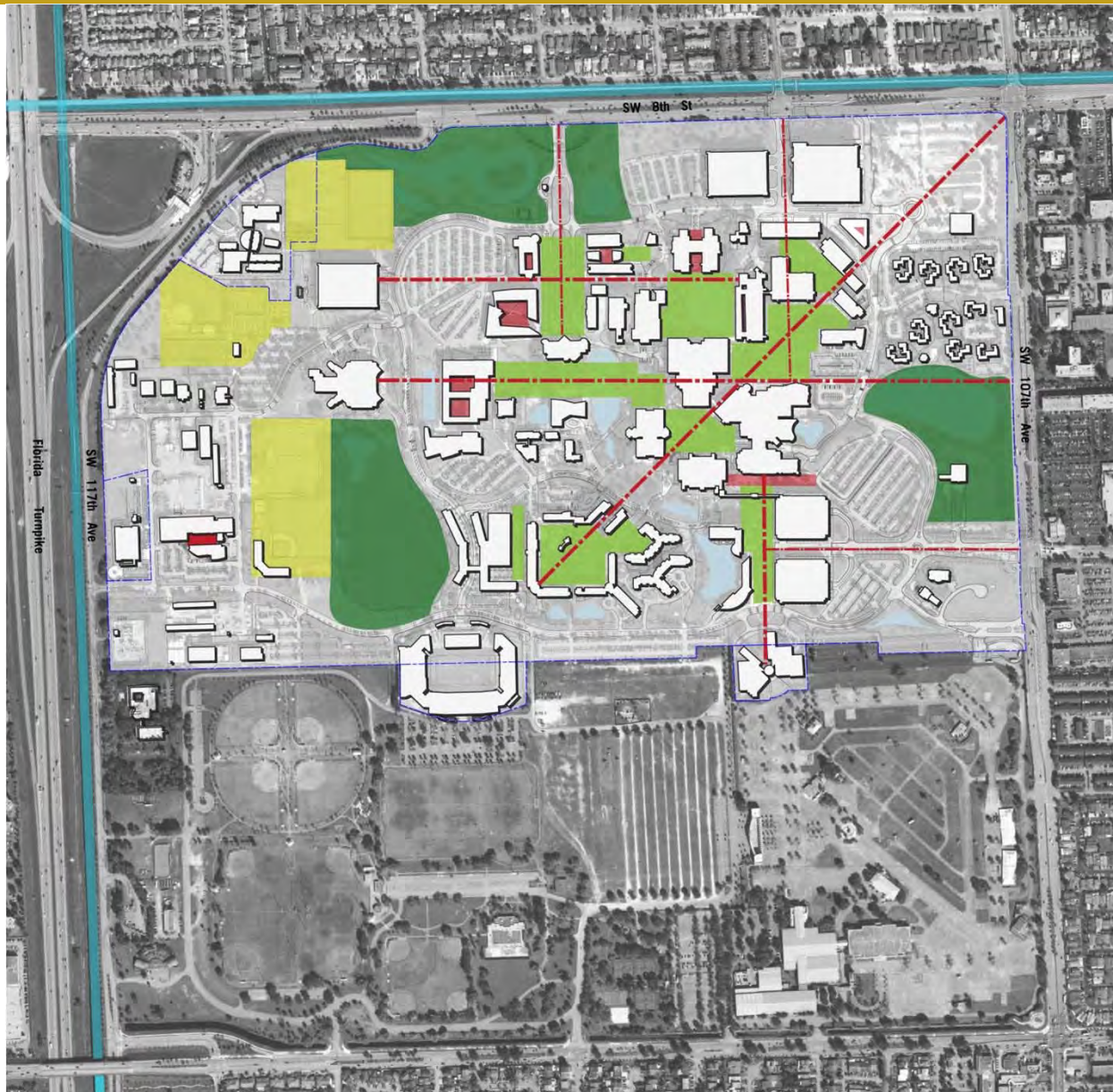
Modesto Maidique Campus Collections



- key:
- · — · — axis
 - collections

Modesto Maidique Campus

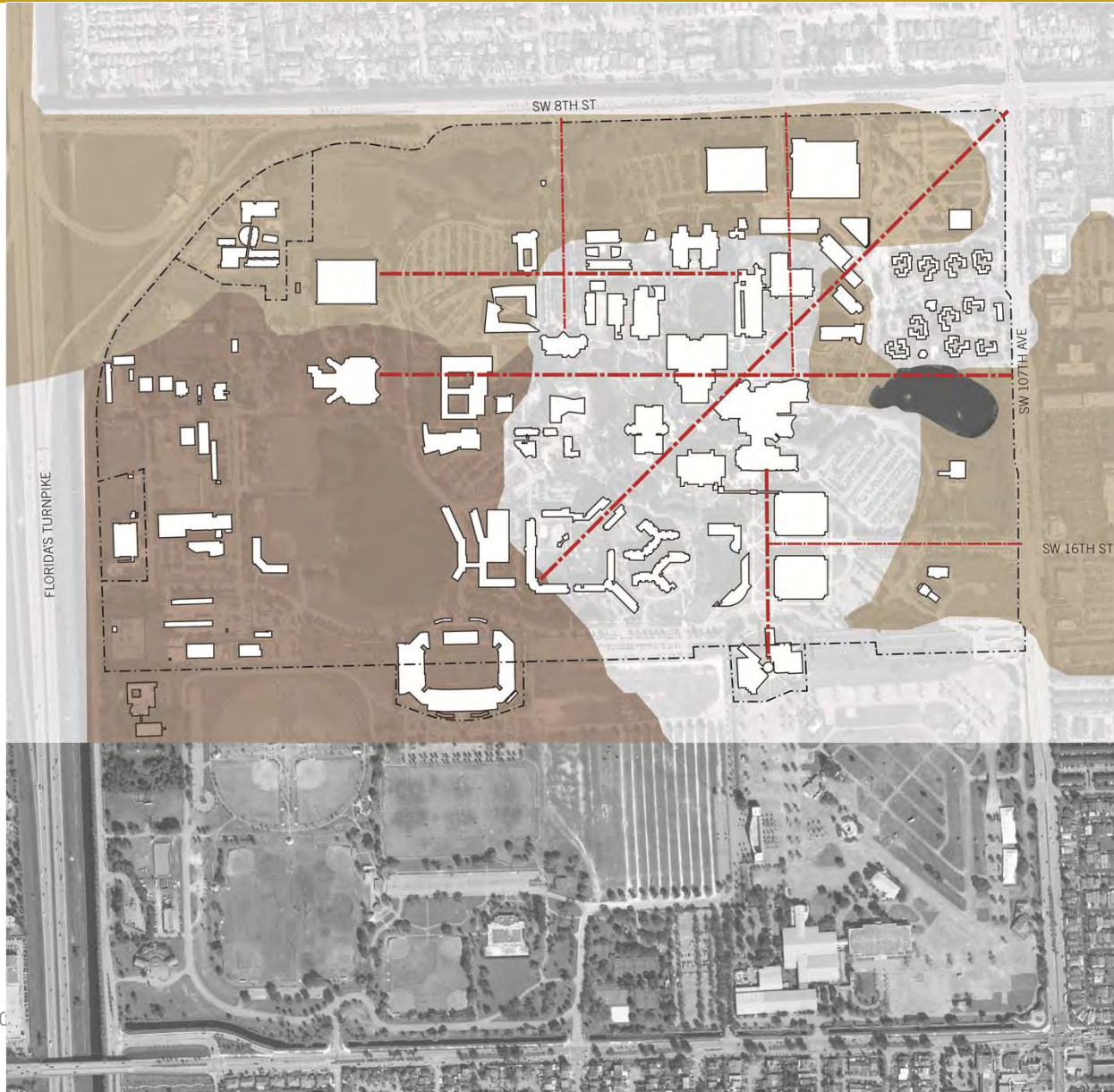
Campus Spaces



- key:
- axis
 - courtyards
 - quads
 - active recreation
 - special purpose landscape

Modesto Maidique Campus

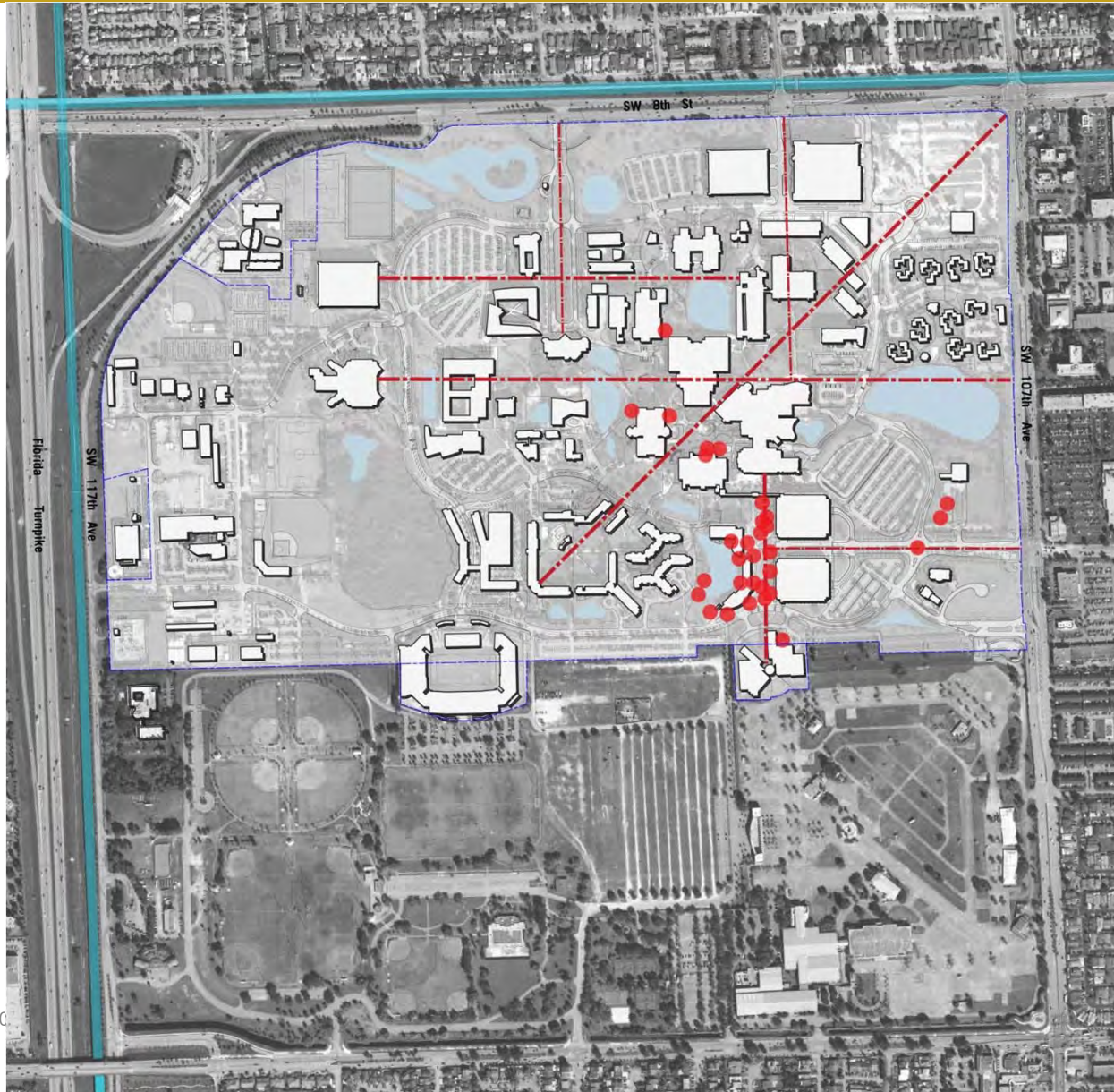
Soils



- key:
- axis
 - Udorthents
Limestone
substrate
 - Urban land
 - Hallandale fine
sand

Modesto Maidique Campus

ART



- key:
- - - axis
 - installation

Modesto Maidique Campus

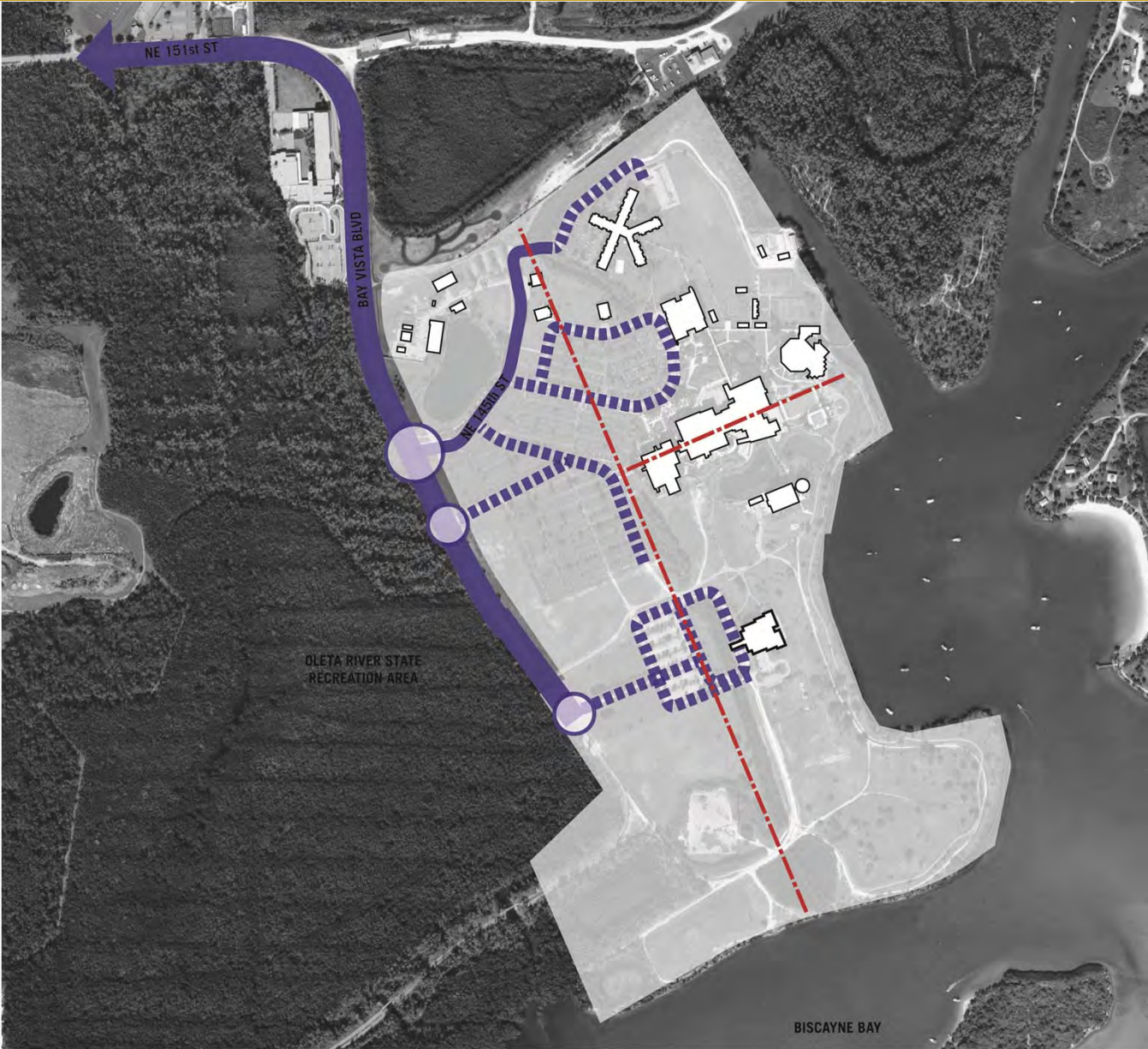
Edges



- key:
- axis
 - potential active edge (major)
 - potential active edge (minor)
 - passive (major)
 - passive minor

Biscayne Bay Campus

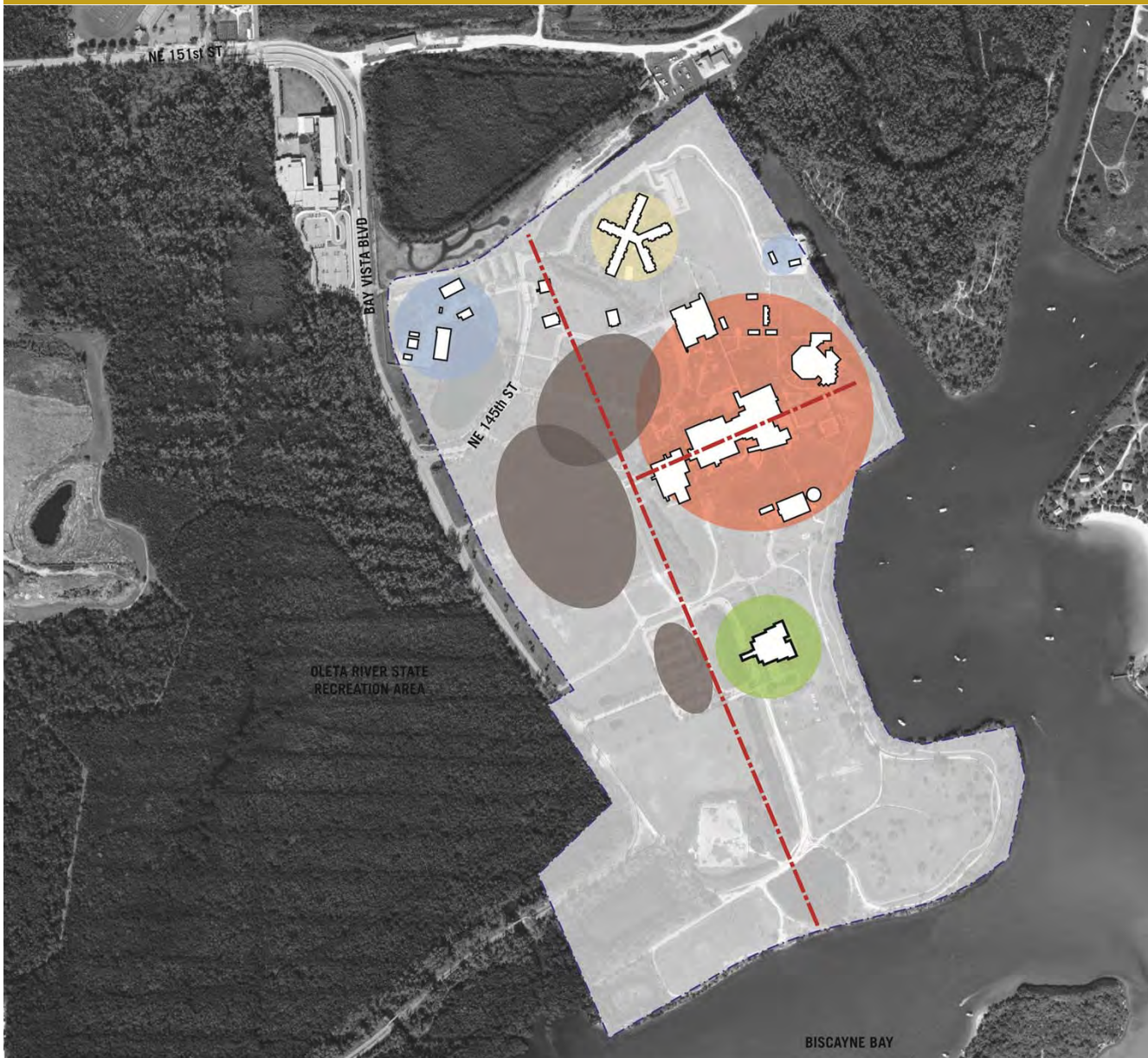
Vehicular Circulation



- key:
- axis
- gateways
- major
- minor

Biscayne Bay Campus

Uses



- key:
- axis
 - academic & research
 - student life & housing
 - support & infrastructure
 - recreation & culture
 - parking

Biscayne Bay Campus

Campus Spaces



- key:
- axis
- courtyards
- quads
- active recreation
- special purpose landscapes

Biscayne Bay Campus

Vegetation



- key:
- · — axis
 - tree cover

Biscayne Bay Campus

Hydrology



- key:
- . - . axis
- water bodies

Biscayne Bay Campus

Soils



- key:
axis
- Urban land
- Udorthents
water complex

Biscayne Bay Campus

Edges



- key:
- · — axis
 - ▨ active edge (major)
 - ▣ active edge (minor)
 - ▨ passive (major)
 - ▣ passive minor)

Engineering Center

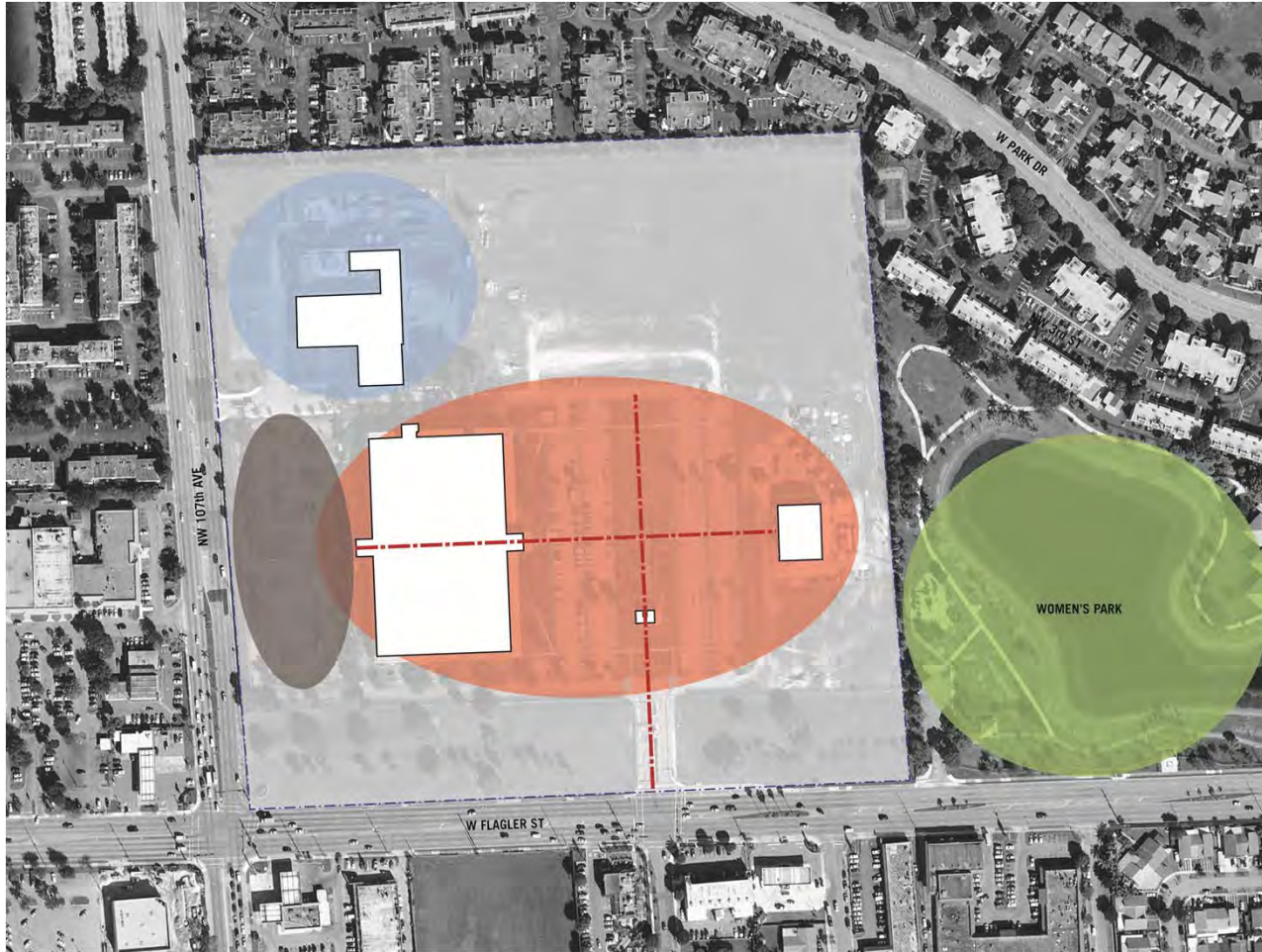
Vehicular Circulation



- key:
- axis
- gateways
- major
- minor

Engineering Center

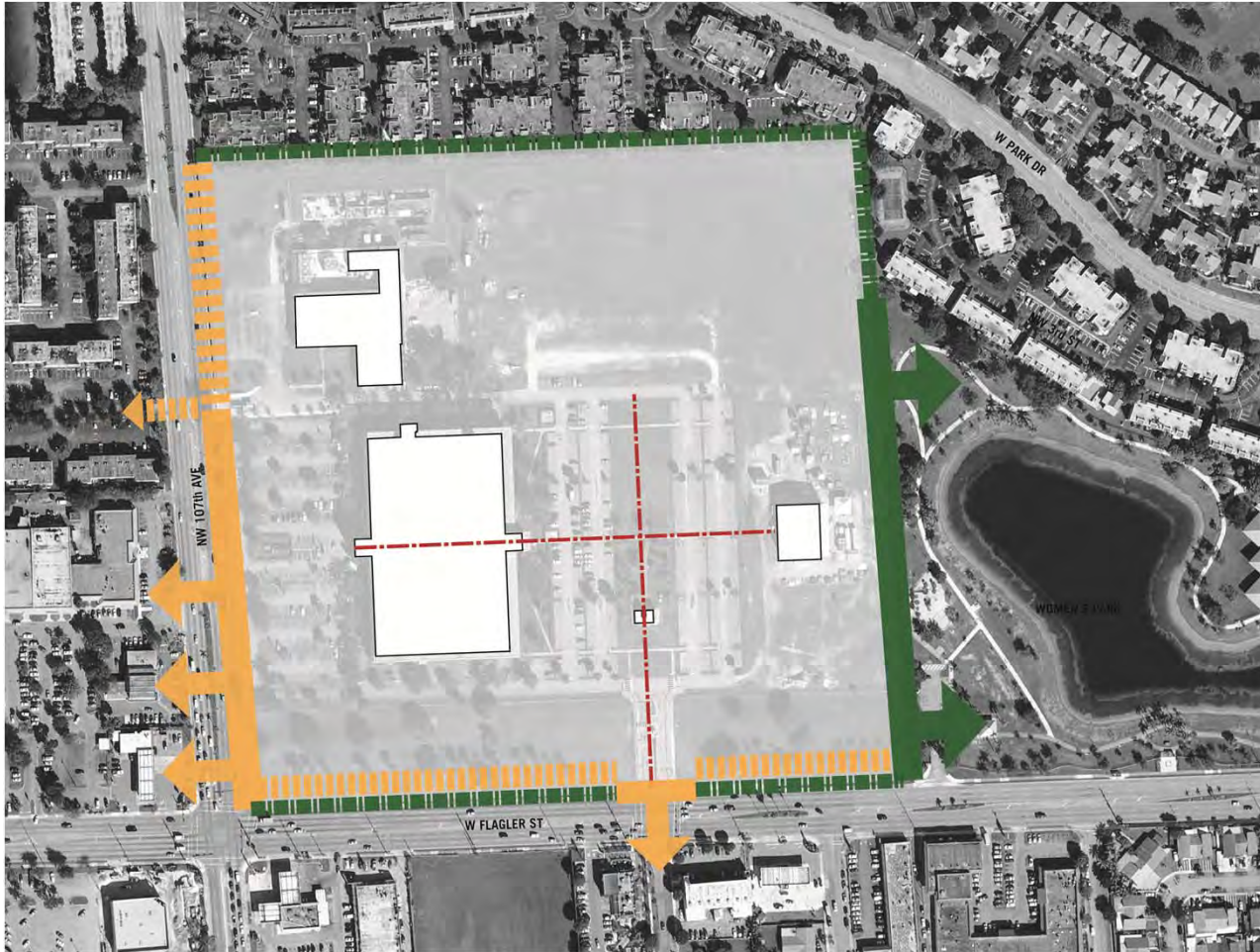
Uses



- key:
- axis
 - academic & research
 - student life & housing
 - support & infrastructure
 - recreation & culture
 - parking

Engineering Center

Edges



- key:
- axis
 - active edge (major)
 - active edge (minor)
 - passive (major)
 - passive minor)



FLORIDA
INTERNATIONAL
UNIVERSITY

Avenues

Physical Design **Hierarchy of Place**

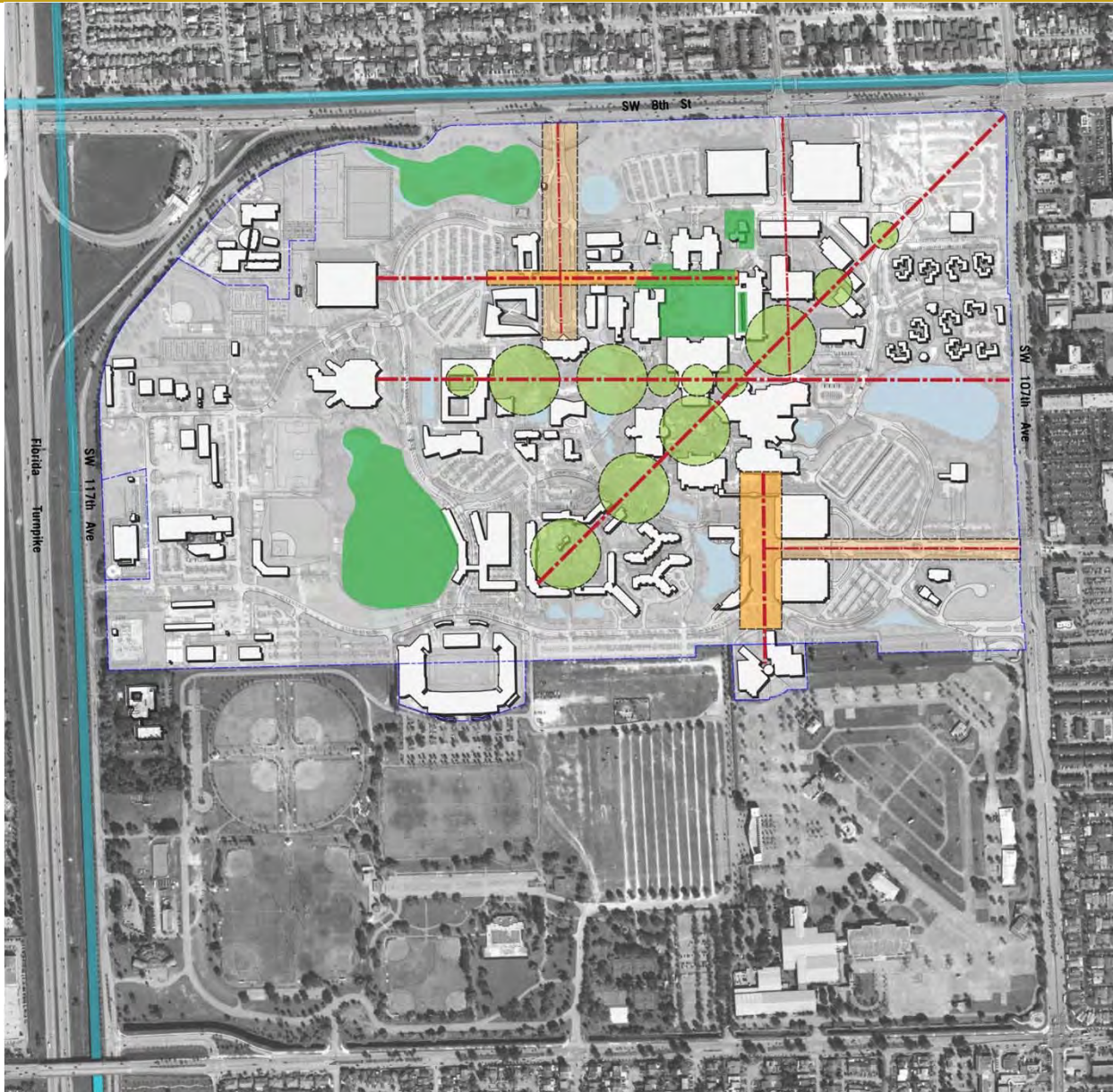
- **Regulating Axes (Visual corridors): Develop, enhance and preserve existing and proposed visual corridors on campus. All future development shall place buildings and landscape features so as to preserve and reinforce the visual corridors significance.**

“enclosed open spaces are often open on the diagonals. These yards are often defined by common building scales, styles or materials, while in the distance one may glimpse a building representing another era or architectural influence. Moving diagonally through these yards, pedestrians are subtly directed onward by the views toward the next campus realm”

Alex Krieger FAIA – Analysis of Harvard

Modesto Maidique Campus

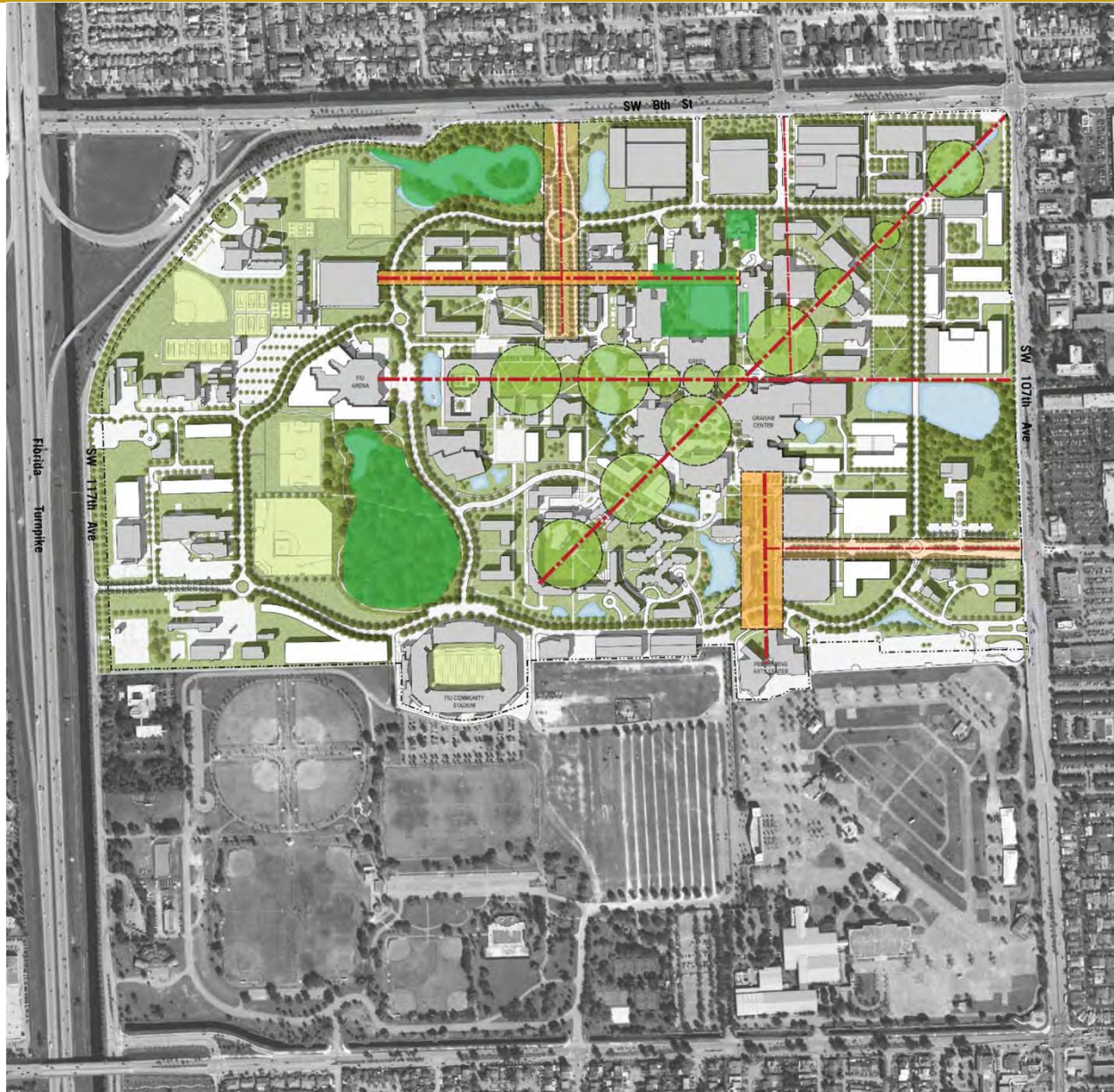
Avenues



- key:
- - - axis
 - axis – series of spaces
 - axis - space

Modesto Maidique Campus

Avenues



- key:
- - - axis
 - axis - series of spaces
 - ▨ axis - space

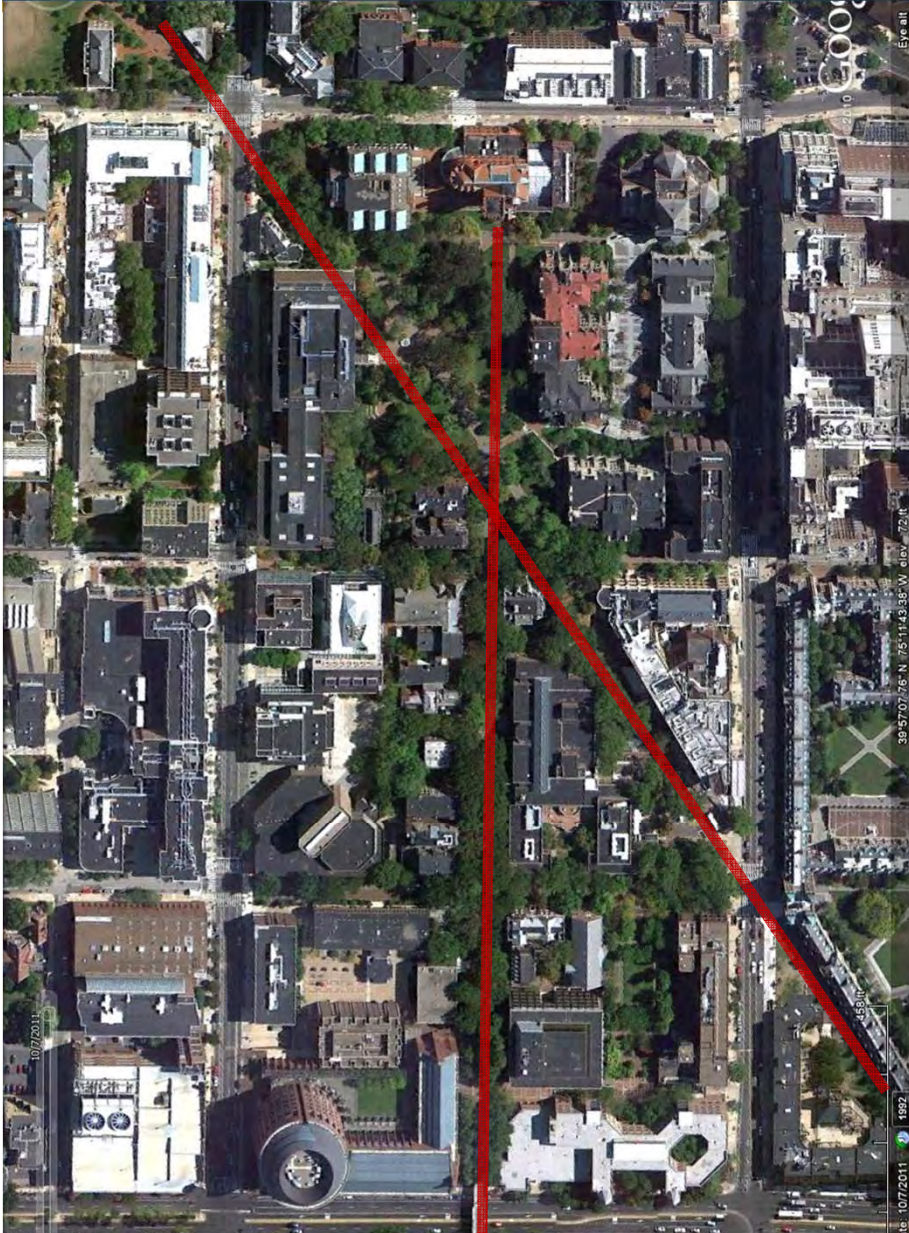
Modesto Maidique Campus

Avenues - FIU



Modesto Maidique Campus

Avenues – University of Pennsylvania



Modesto Maidique Campus

Avenues – Texas A&M



Modesto Maidique Campus

Avenues – University of California San Diego



Best Practices / Precedents

Avenues- Assessment

- **Prioritize the regulating axis as more than just a line of the plan**
- **Avenues should become “second nature” as a identifiable space associated with FIU**
- **Develop a framework for types of axes (series of spaces & unified space)**
- **Prioritize opportunities for improvements**
- **Future buildings to prioritize program that enhances the Avenues – creates activity**



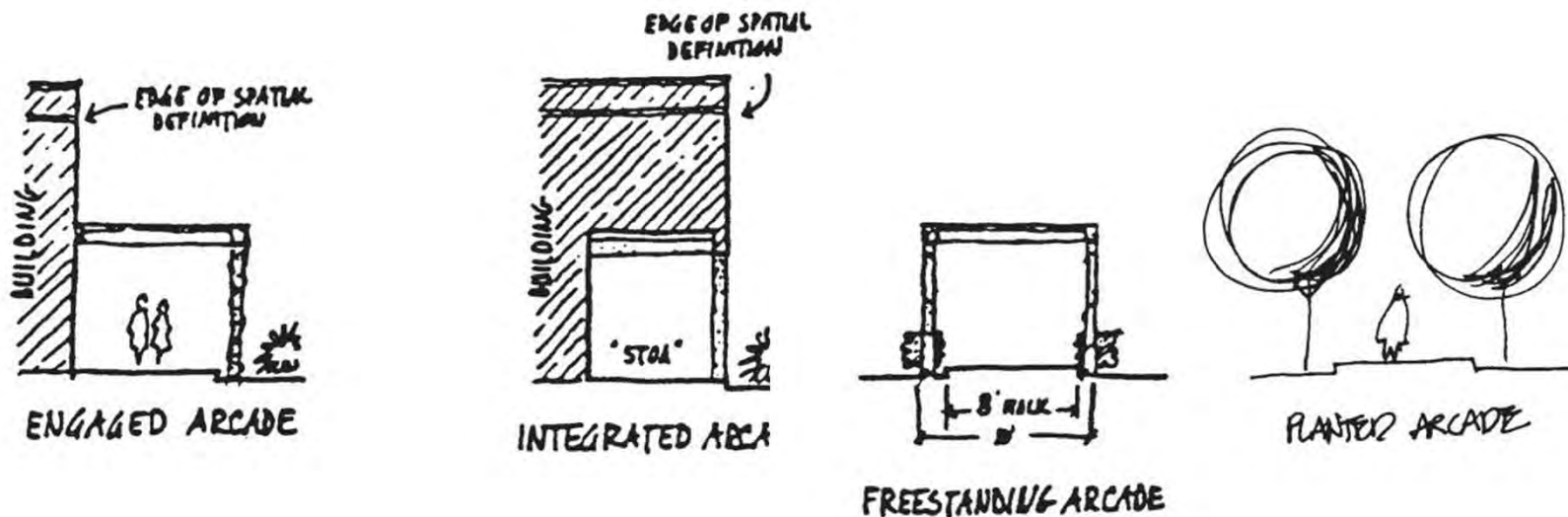
FLORIDA
INTERNATIONAL
UNIVERSITY

Walkability

Best Practices / Precedents

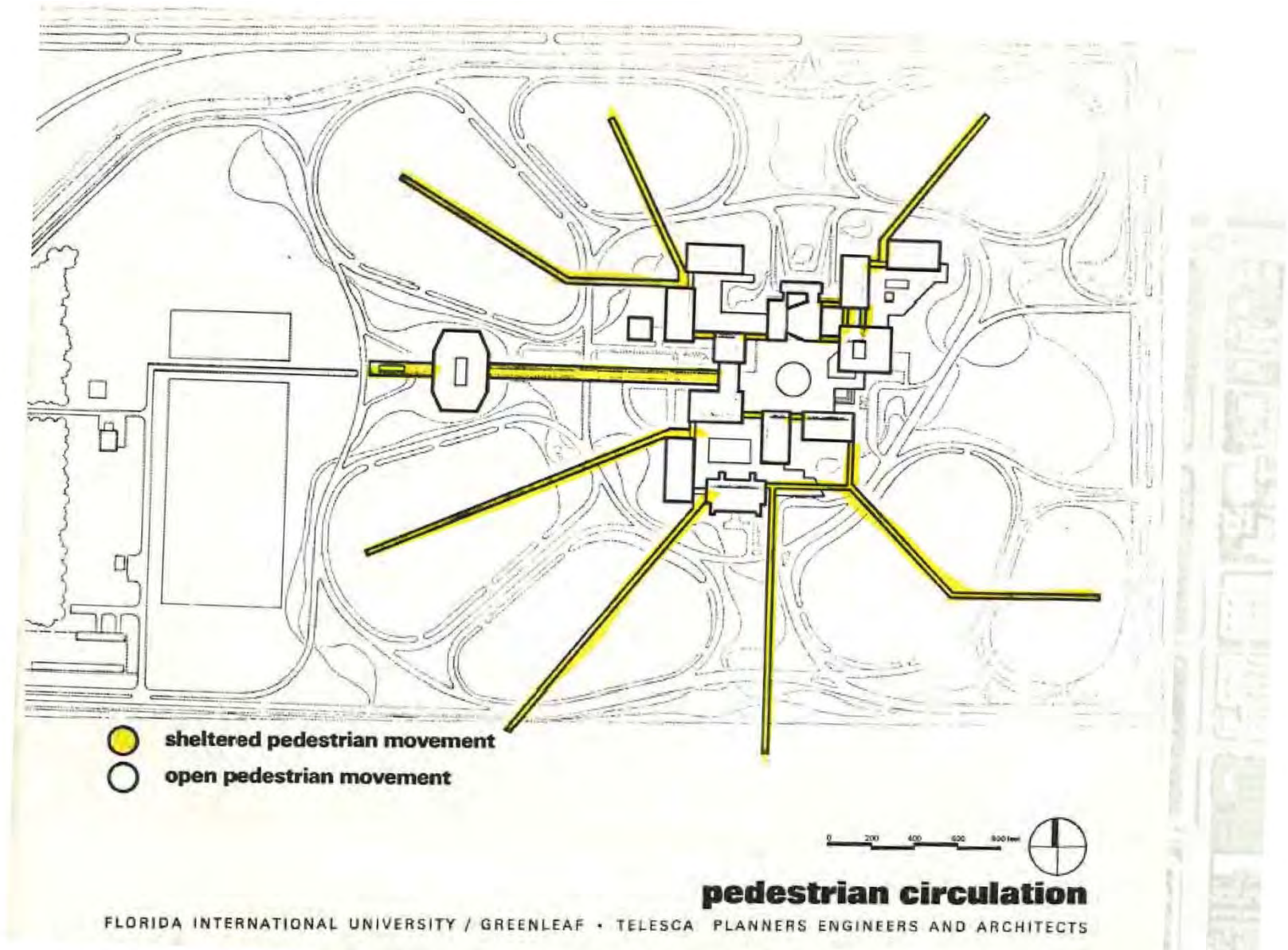
Physical Design Walkability

- Provide strategies to increase the amount of shaded walkways and outdoor gathering spaces through landscaping, covered connectors and outdoor furnishings



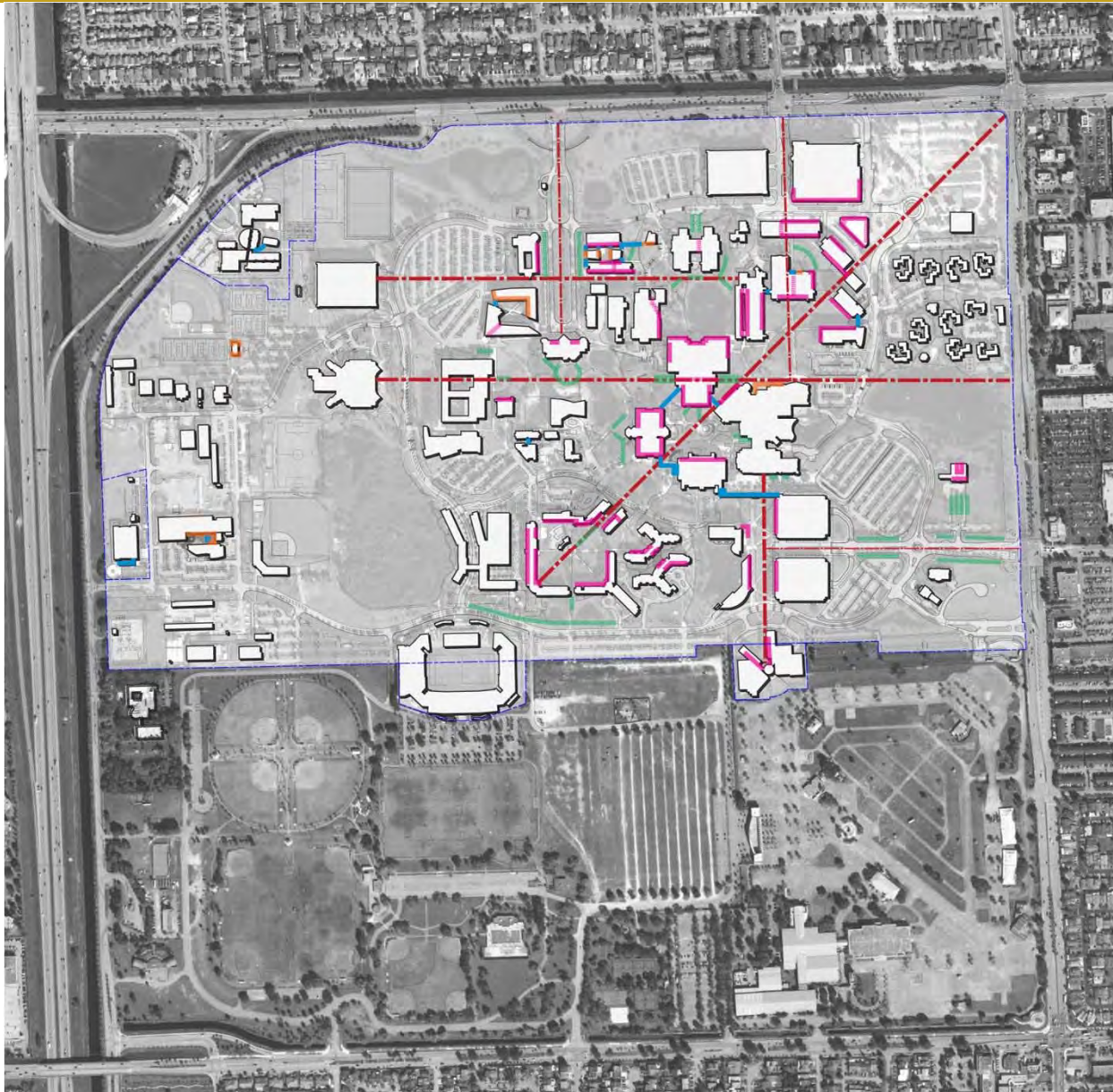
Modesto Maidique Campus

Walkability – FIU (1980)



Modesto Maidique Campus

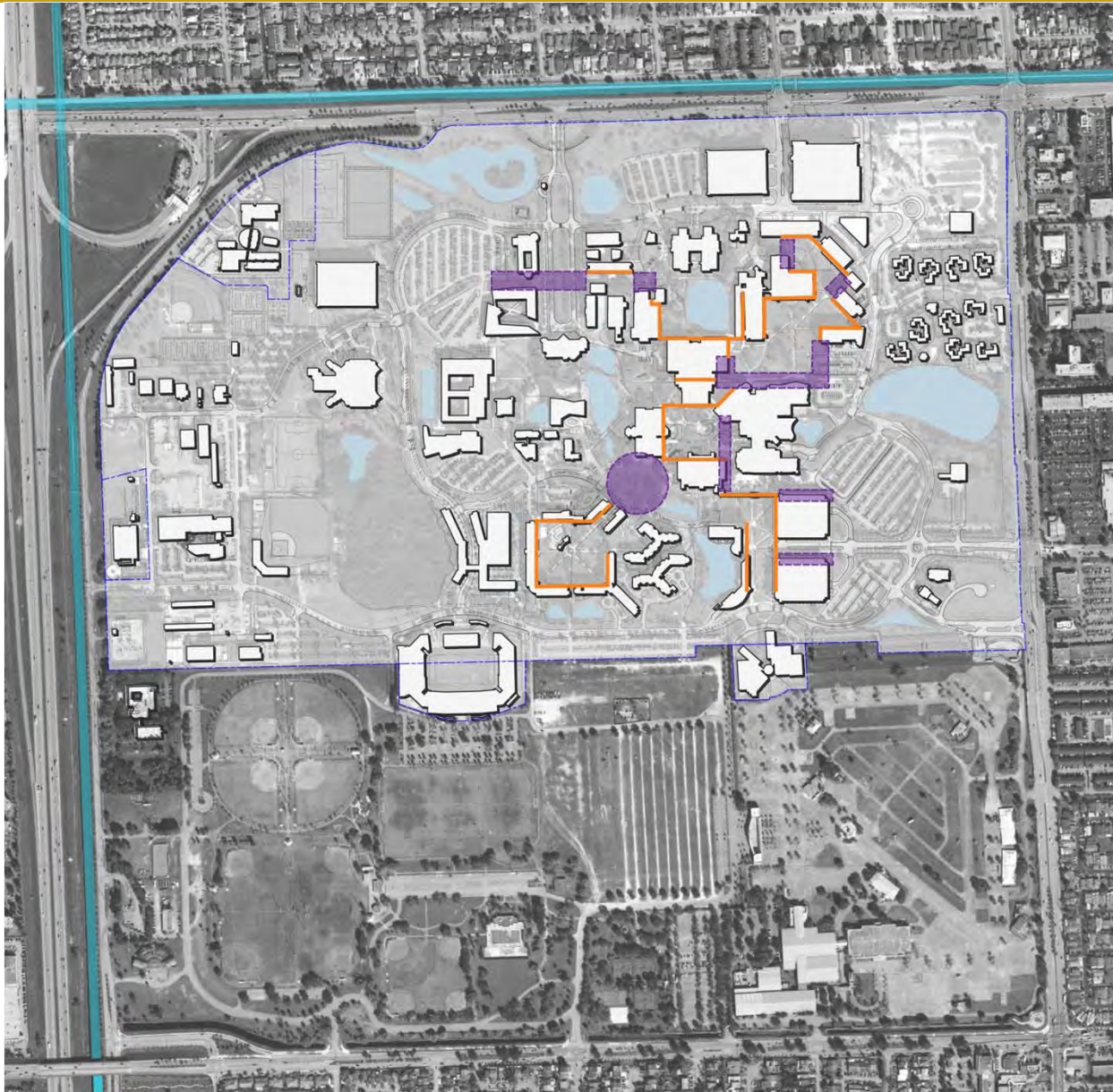
Walkability - Inventory



- key:
- axis
 - building edge
 - attached
 - detached
 - uncovered
 - thru-bldg

Modesto Maidique Campus

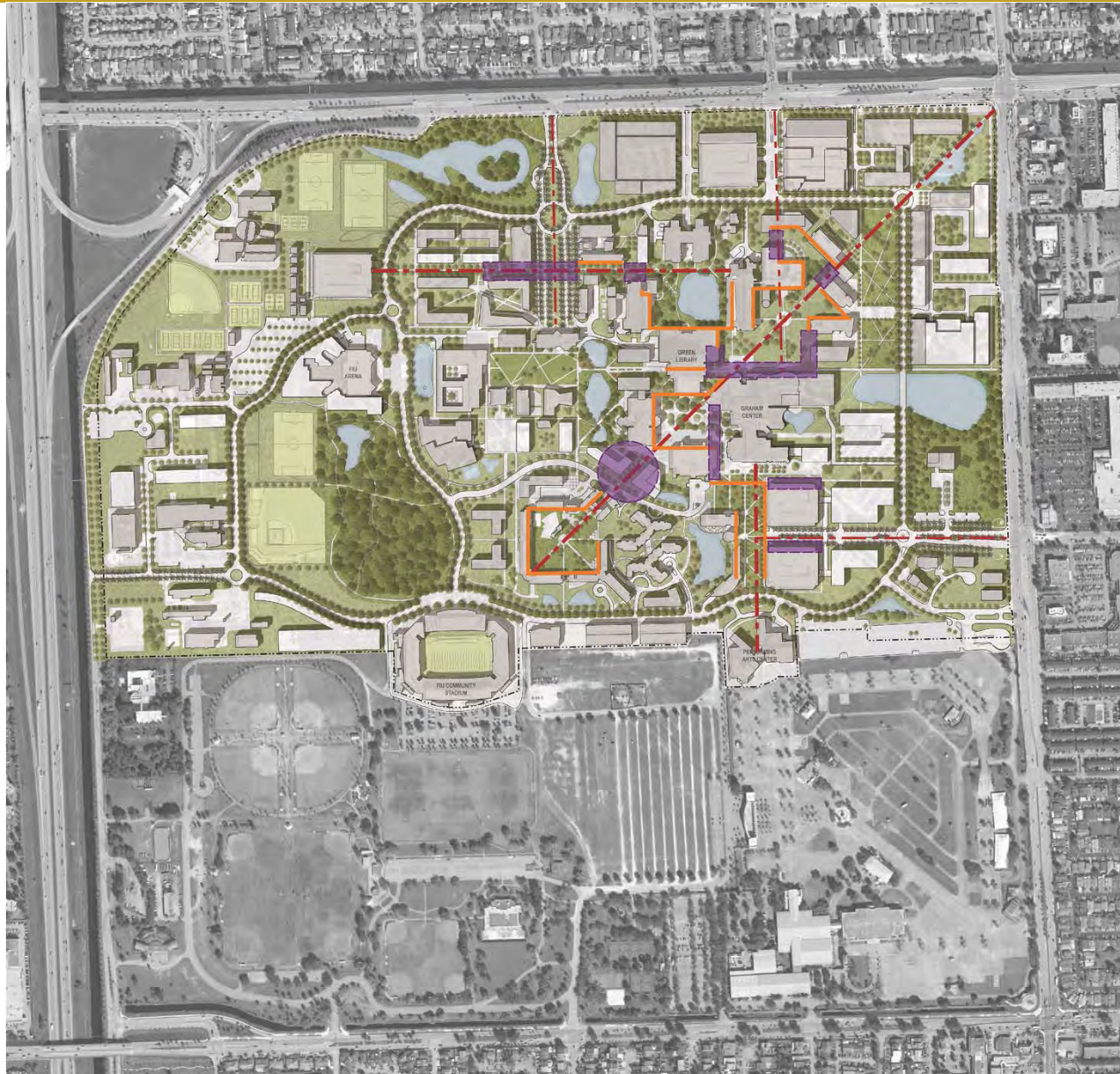
Walkability - Analysis



- key:
- . - . axis
 - connections
 - opportunities

Modesto Maidique Campus

Walkability - Analysis



- key:
- . - axis
 - connections
 - opportunities

Bicayne Bay Campus

Walkability - Analysis



- key:
- axis
 - building edge
 - attached
 - detached
 - uncovered
 - thru-bldg

Modesto Maidique Campus

2015 Urban Design Concept Plan

Walkways - Assessment

- Identify type based on place (one type does not fit all)
- Develop a framework for incremental improvements
- Incorporate strategy into Campus Design Guidelines
- Prioritize implementation as part of Axis development

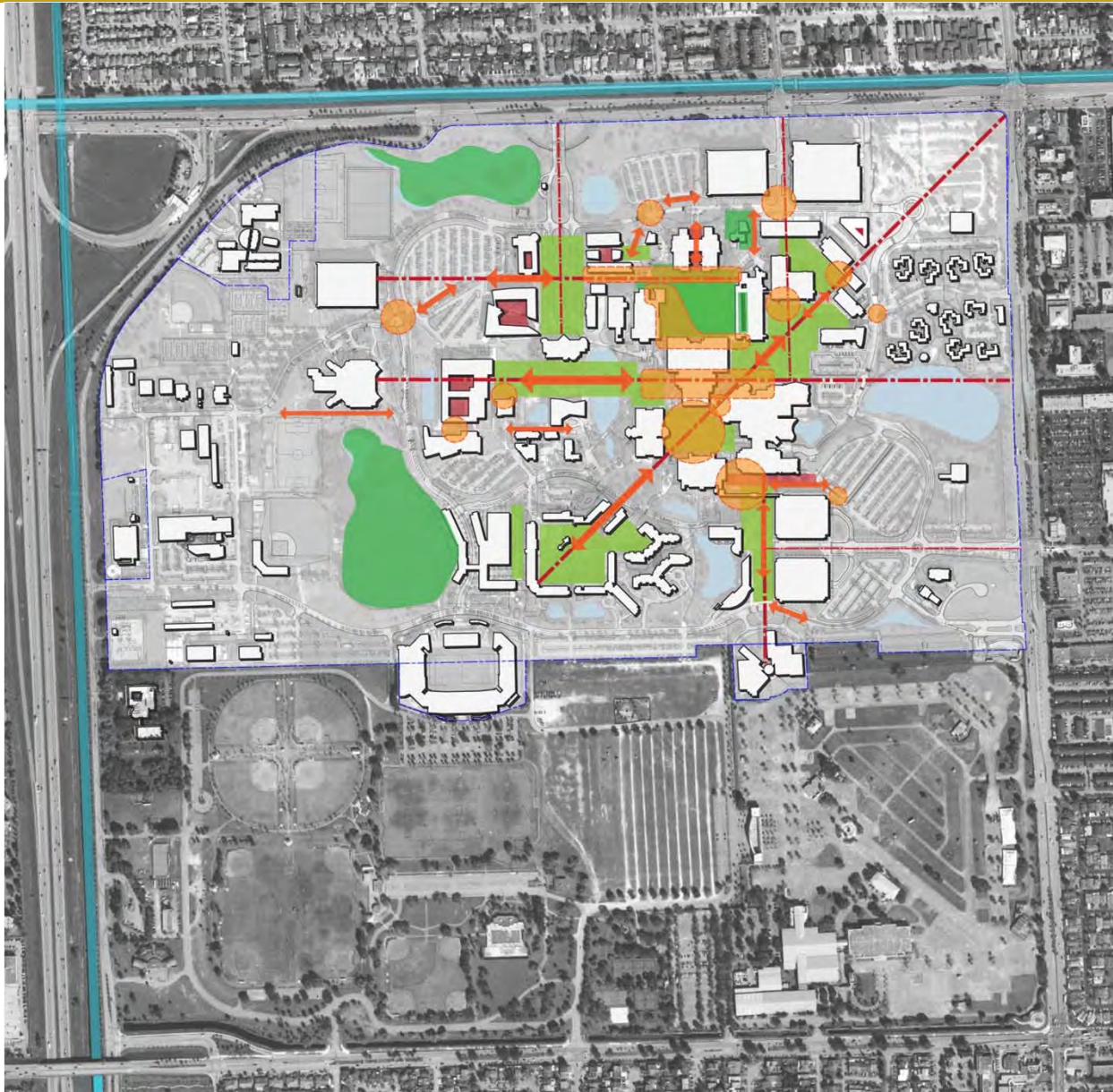


FLORIDA
INTERNATIONAL
UNIVERSITY

SPACES

Modesto Maidique Campus

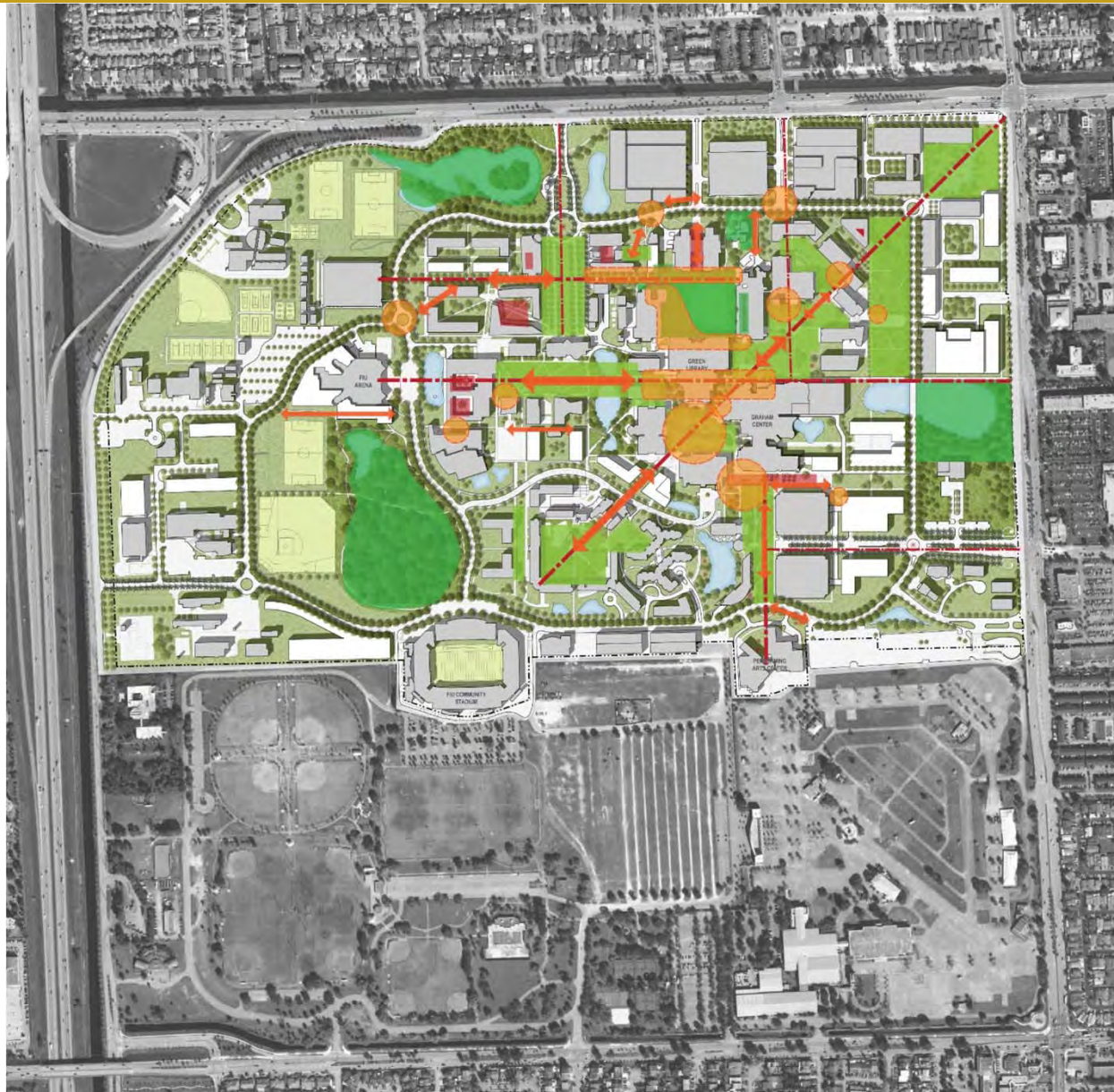
Quads & Courtyards



- key:
- axis
 - courtyards
 - quads
 - activity nodes

Modesto Maidique Campus

Quads & Courtyards



- key:
axis
- courtyards
- quads
- activity nodes

Foundation Court

Green Library

GL-100 auditorium

Deuxieme Maison

Cube

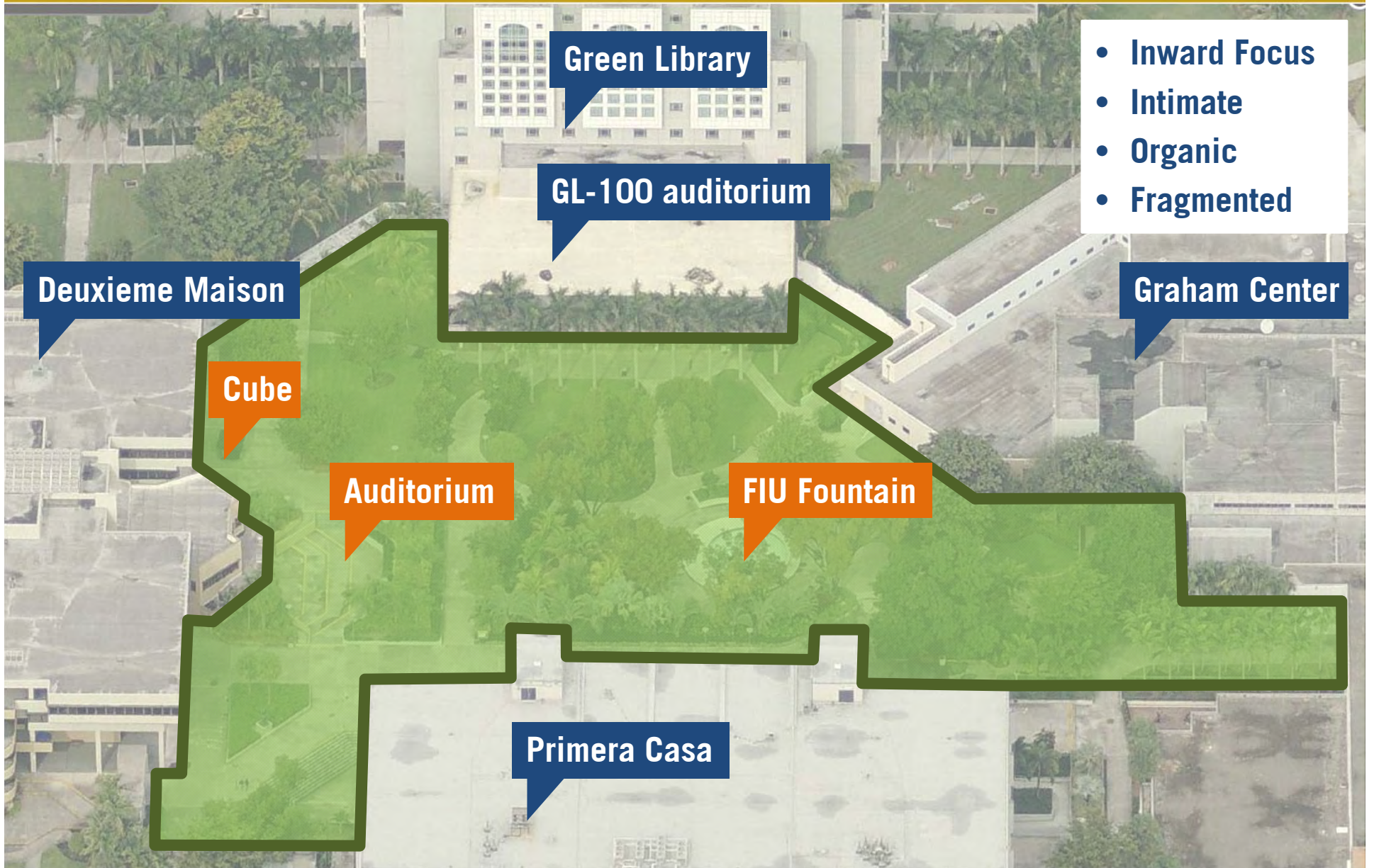
Auditorium

FIU Fountain

Primera Casa

- Inward Focus
- Intimate
- Organic
- Fragmented

Graham Center



Foundation Court



Tamiami Park

Primera Casa

Deuxieme Maison

Foundation Court

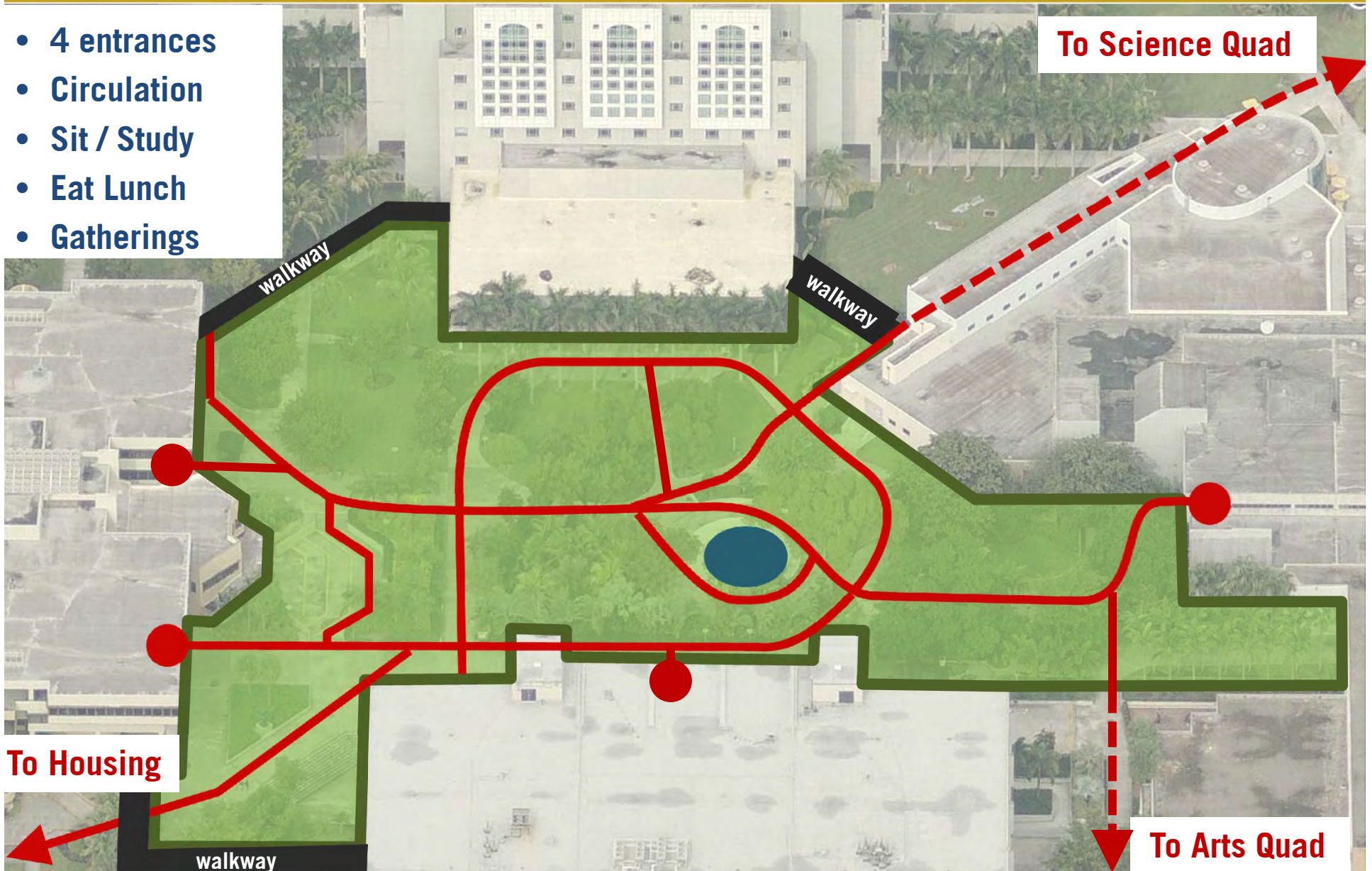
The central court will be a scene of high activity and movement, generated by the library and student union and the traffic between the central court and the adjacent instructional courts. The central court is the focal point of the campus and the design of this court is disposed to accommodate external traffic without movement through the instructional courts. The central court is also designed to remain in proximity to the adjacent instructional courts to permit easy access to the central facilities on the Tamiami Campus.

The central court will be a scene of high activity and movement [...] the focal point of the campus.

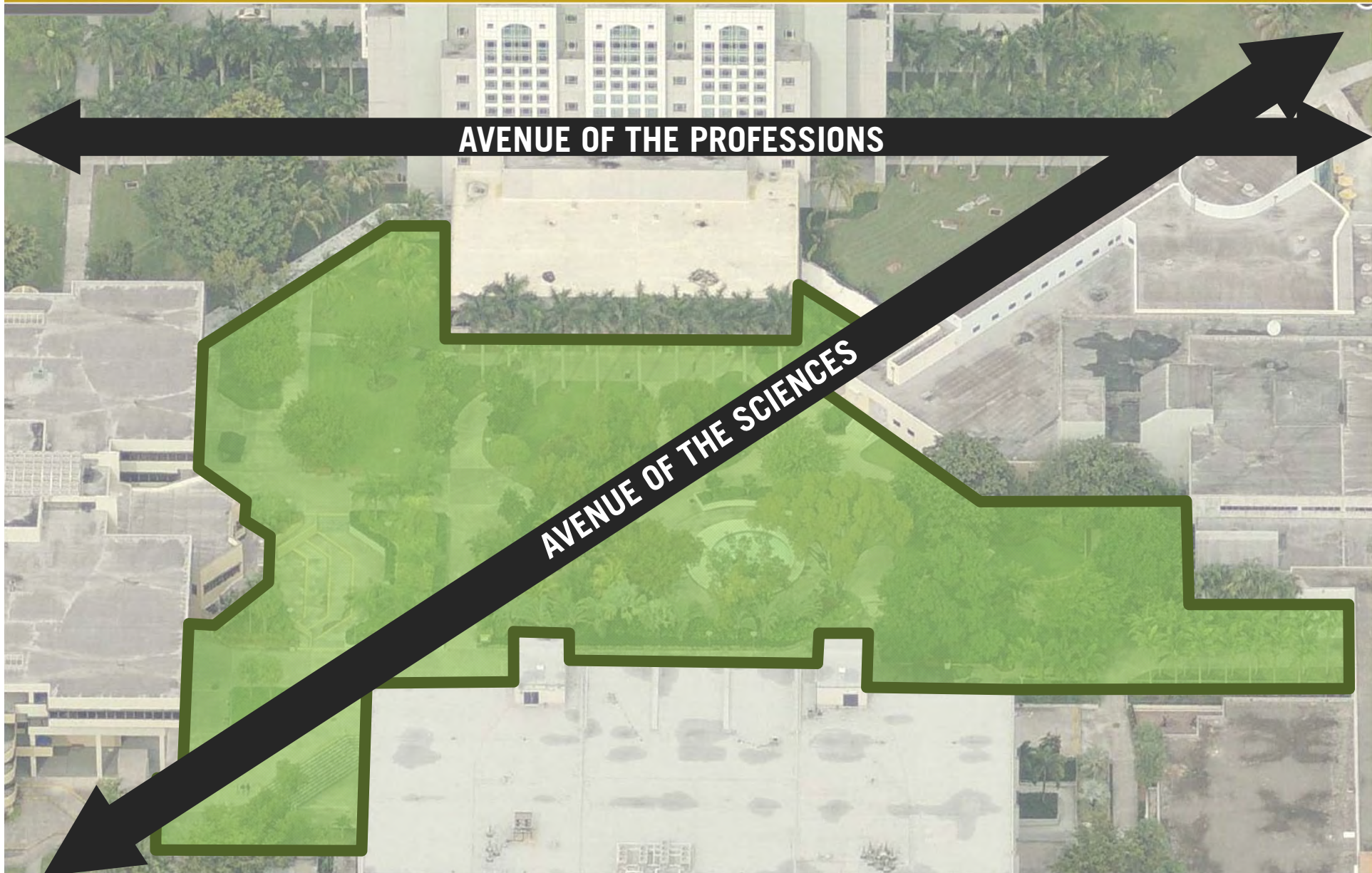


Foundation Court

- 4 entrances
- Circulation
- Sit / Study
- Eat Lunch
- Gatherings



Foundation Court



AVENUE OF THE PROFESSIONS

AVENUE OF THE SCIENCES

FIU Campus Spaces

Assessment

ID	NAME	TYPE	CAMPUS	SIZE				TYPE	DEFINED	FLEXIBLE	PRIMARY ACTIVITY	SECONDARY ACTIVITY	ATTRIBUTES
				+/-		sf	ac						
M1	Education	Courtyard	MAMC	+/-	3,900	sf	0.1 ac	Formal	Yes	Low	Gathering		Sparse
M2	Business	Quad	MAMC	+/-	143,000	sf	3.3 ac	Formal	Yes	Low	Circulation		Open. Rigid. Ceremonial. Palms
M3	Architecture	Courtyard	MAMC	+/-	6,700	sf	0.2 ac	Formal	Yes	Medium	Gathering		Sparse
M4	Engineering & Computer Science	Courtyard	MAMC	+/-	7,000	sf	0.2 ac	Informal	Yes	Low	Gathering	Circulation	
M5	Business	Courtyard	MAMC	+/-	23,800	sf	0.5 ac	Informal	Yes	Yes	Gathering	Circulation	Programmed. Movement
M6	Lake #2	Quad	MAMC	+/-	142,000	sf	3.3 ac	Informal	Yes	No	Gathering		Aesthetic. Collection. Significant. Passive. Palms
M7	Science	Quad	MAMC	+/-	239,700	sf	5.5 ac	Formal	No	Yes	Circulation		Meandering. Active. Uneventful. Sparse. Emerging
M8	Balart Hall - North	Courtyard	MAMC	+/-	11,700	sf	0.3	Formal	Yes	No	Gathering		Sparse
M9	Balart Hall - South	Courtyard	MAMC	+/-	11,500	sf	0.3	Formal	Yes	No	Gathering		Shaded
M10	Main	Quad	MAMC	+/-	102,800	sf	2.4 ac	Informal	No	Yes	Gathering	Circulation	Flexible. Heart. Tree cover.
M11	Central Courtyard	Courtyard	MAMC	+/-	183,000	sf	4.2 ac	Informal	Yes	Yes	Gathering		Active. Vegetation. Hardscape. Rigid. Flexible.
M12	Graham Promenade	Courtyard	MAMC	+/-	36,000	sf	0.8	Formal	Yes		Circulation	Gathering	
M13	Panther Village / Housing	Quad	MAMC	+/-	159,200	sf	3.7 ac	Formal	Yes		Gathering		Open. Flexible
M14	Arts	Quad	MAMC	+/-	123,200	sf	2.8 ac	Formal	Yes		Circulation		Sculpture. Flexible. Movement
B1	Main	Quad	BBC	+/-	142,500	sf	3.3 ac	Informal	Yes		Gathering		Shaded. Under-utilized
B2	Academic One	Courtyard	BBC	+/-	15,000	sf	0.3 ac	Formal	Yes		Gathering	Circulation	Shaded. Movement. Meeting. Pleasing. Simple
B3	Hospitality Management	Courtyard	BBC	+/-	7,500	sf	0.2 ac	Formal	Yes		Gathering		Open.

Modesto Maidique Campus

2015 Urban Design Concept Plan

Spaces - Assessment

- **Develop spaces for a variety of uses**
- **Maintain flexibility**
- **Spaces should prioritize / relate to the Avenues**
- **Buildings relationship to the space is critical in creating activity**
- **Clearly define circulation network that complements space program**
- **Clearly defined edges creates an enhanced space**



FLORIDA
INTERNATIONAL
UNIVERSITY

Sustainability

Sustainability

- **Energy use**
- **Compact development**
- **Promoting density**
- **Maintaining open space to allow percolation / level of permeability**
- **Shading (heat island effect) – minimize surface parking, extensive hardscapes**
- **Tree cover – creating an island within the urban context**
- **Water reuse**



FLORIDA
INTERNATIONAL
UNIVERSITY

Wayfinding

Wayfinding

- **Legibility of the place**
 - **Identification of the Avenues**
 - **Strengthen primary circulation routes**
 - **Use of similar materials**
- **Signage**

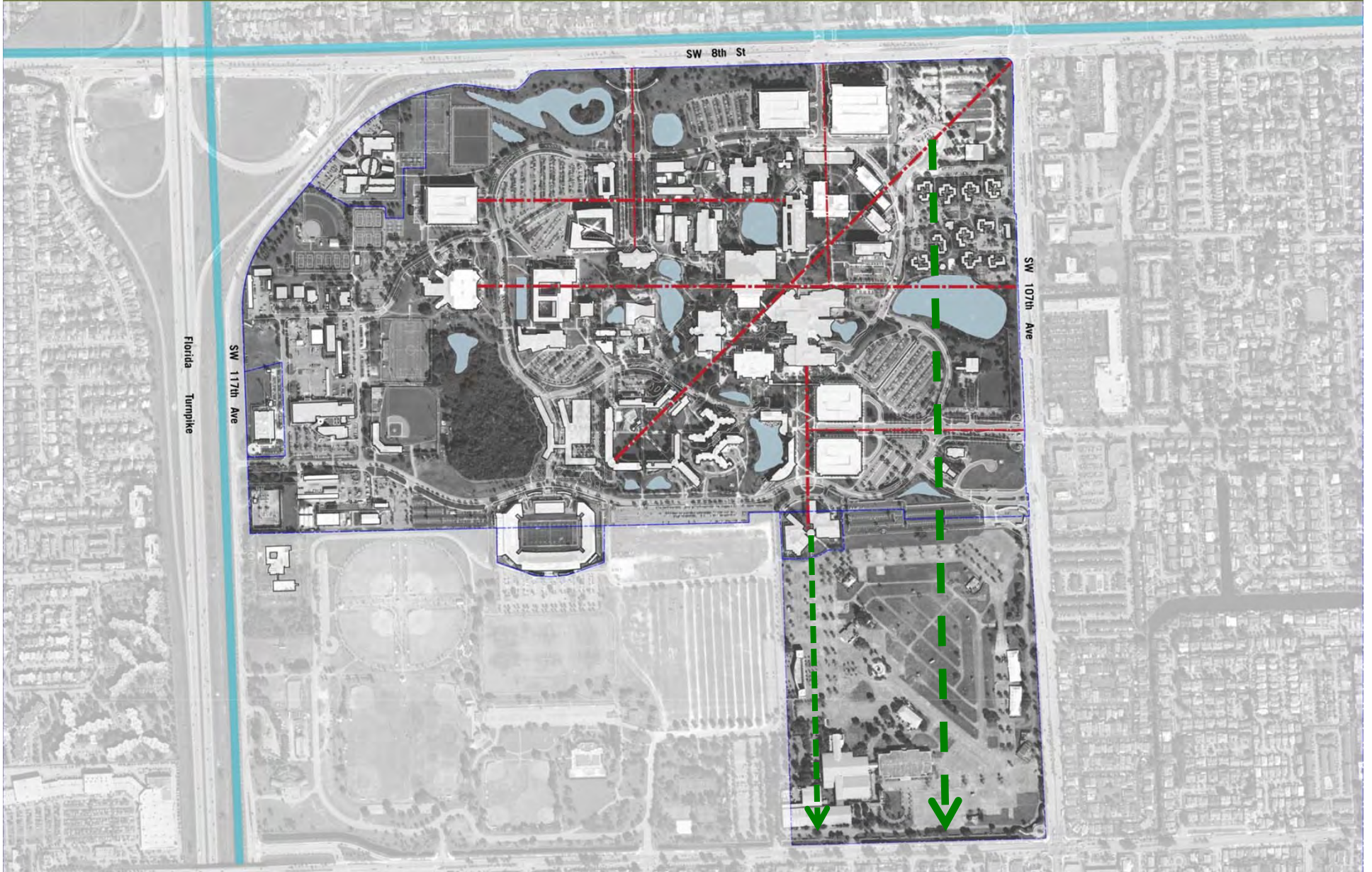


FLORIDA
INTERNATIONAL
UNIVERSITY

Looking South

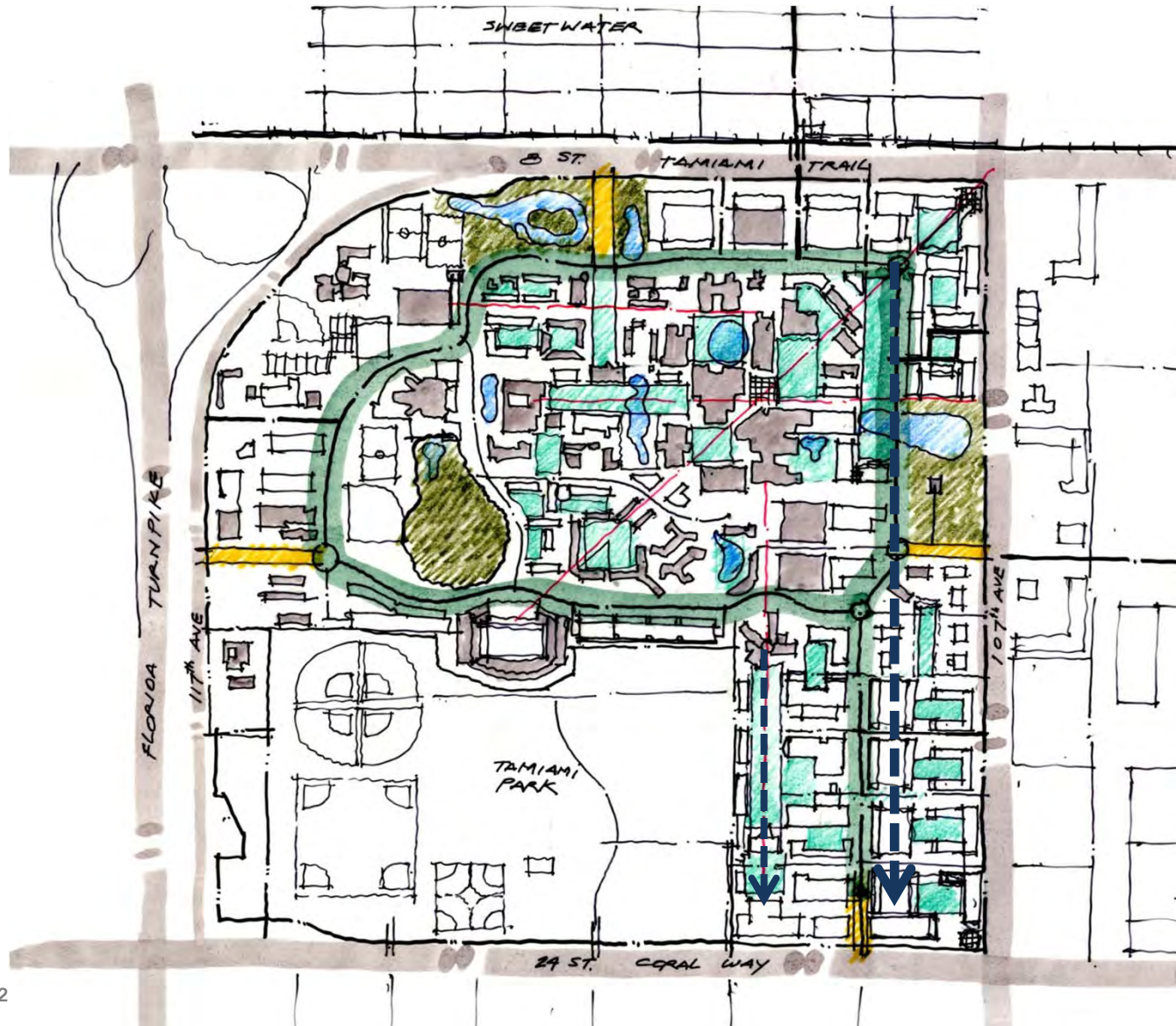
Modesto Maidique Campus

Existing



Modesto Maidique Campus

Vision Plan

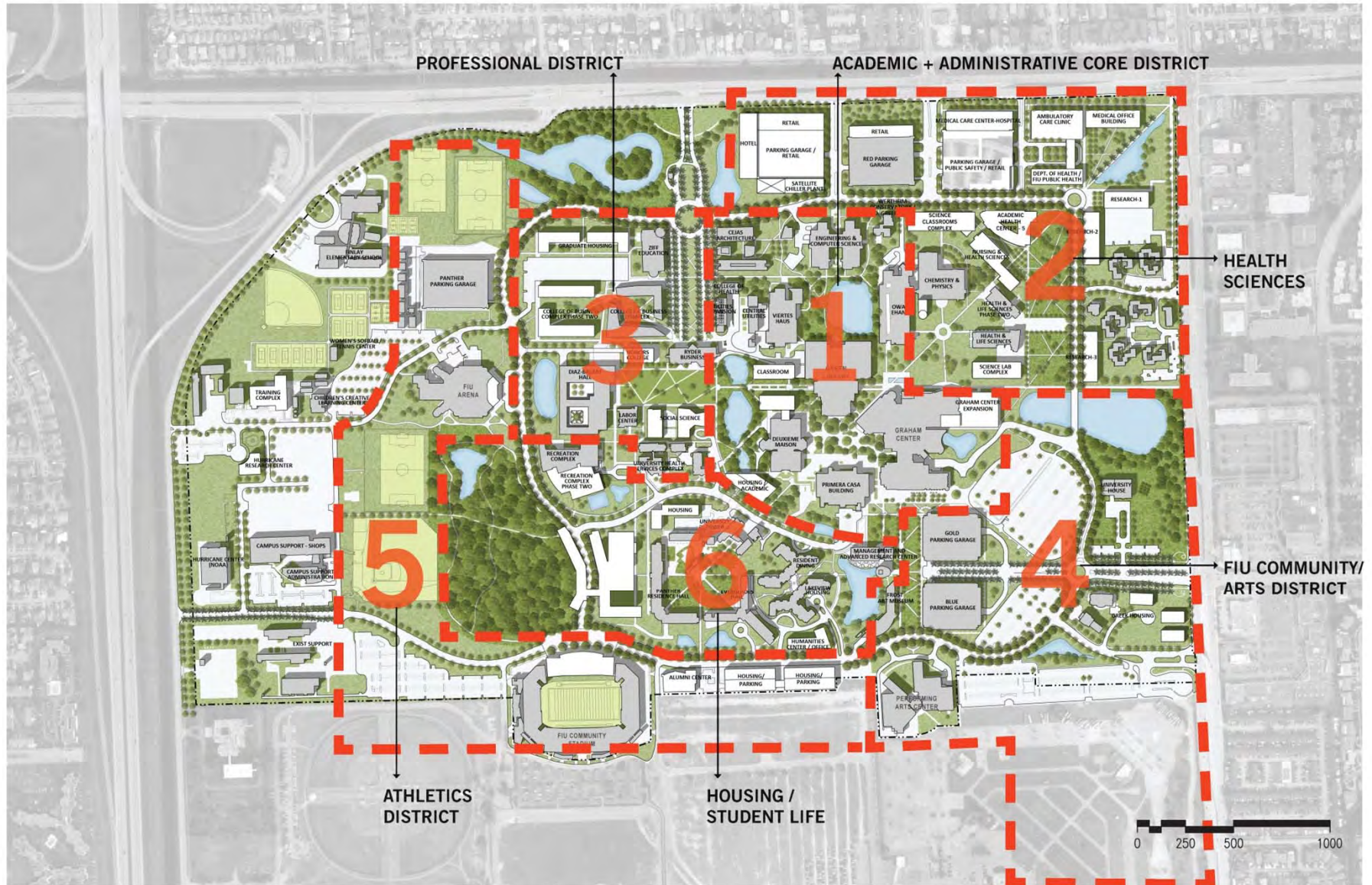




FLORIDA
INTERNATIONAL
UNIVERSITY

Districts

Modesto Maidique Campus Districts



Summary

FIU Campus Strategy

Analysis Summary

The development of the axis as more than just a line on a plan

- Organizing element on campus
- Key pedestrian linkage between Districts
- Creates a sense of place / identity unique to each campus

Exterior campus spaces

- Can serve as focal points for informal gathering, encounters and academic use
- Can become memorable spaces linked to the identity of the university

The physical relationship of the campus edges conditions impacts the surrounding communities

- Can be enhanced to identify the University
- Can spur redevelopment / investment

The development of Districts creates

- Unique sense of place while allowing for flexibility
- Unified through the landscape