

FLORIDA INTERNATIONAL UNIVERSITY

# CAMPUS MASTER PLAN

2010-2020 UPDATE

*Roadmap to the Future*

**FIU**

**Board of  
Trustees**



# Campus Master Plan 2010-2020

- FIU's Master Plan is a set of guiding principles and facility projects that align the University's built environment with its strategic plan

*What are our space needs in the future to meet our academic objectives*

- The Master Plan includes many elements

*Facilities, infrastructure, sustainability, landscaping, architectural design, and transportation in order to meet academic, research and engagement Objectives*

- The Master Plan also measures and assesses the University's impact on facilities, services and natural resources of "host" communities

*Town and Gown collaboration and cooperation*

# Campus Master Plan 2010-2020

## Major Issues: 2012 Evaluation / Appraisal Report

- Overcrowding at Modesto Maidique Campus
- Accountability Measures to Exceptions to the Campus Master Plan
- Parking Availability / Accessibility & Transportation Options
- Traffic Congestion / Roadway Capacity
- Student Housing Demand
- Recreation & Open Space Preservation
- Land Use Constraints
- Future of Biscayne Bay Campus & Engineering Center
- Campus Identity: Architecture and Landscaping
- Improved Relations with Host Communities

# Campus Master Plan 2010-2020

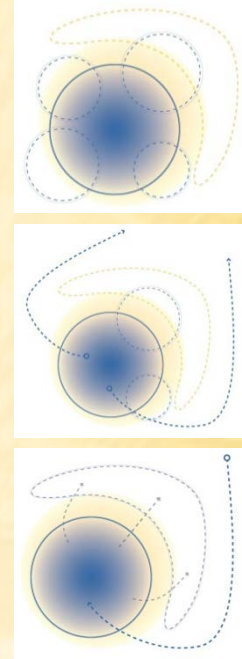
## VISION

### Driving Forces:

- Ensure Student Success
- Build Institutional Brand and Legacy
- Create Campus Sustainability & Resiliency
- Position Partnerships and Entrepreneurship
- Engage Community Resources and Residents

### Key Characteristics:

- Enhance & Strengthen Academic & Research Enterprises
- Reinforce Campus Core
- Develop & Link Nodes and Neighborhoods
- Stimulate Flexible/Future Expansion





# Campus Master Plan 2010-2020

## Key Planning Goals

- Align Enrollment with: Learning, Research, & Support Space Needs
- Develop better options with Transportation and Access
- Establish better Connectivity with Neighboring Communities
- Optimize Development within Land Use Constraints
- Develop a Sustainable Campus Environment

# Campus Master Plan 2010-2020

## Space Needs Planning Goals

**Shift to more International, Full time, and Online Collaborative Content Areas:**

-Arts, Environment, Globalization, and Health

**Accommodate Growth: Enrollment 22%; Research 28%**

**Enrollment basis:**

-Undergraduate= 81% of FTE

-Graduate Studies = 19% of FTE

**Housing Target = 20% of FTE**

**Parking Target = 34% of FTE + Partnership Needs**

**2,000 students per year across:**

-Modesto A. Maidique Campus

-Biscayne Bay Campus

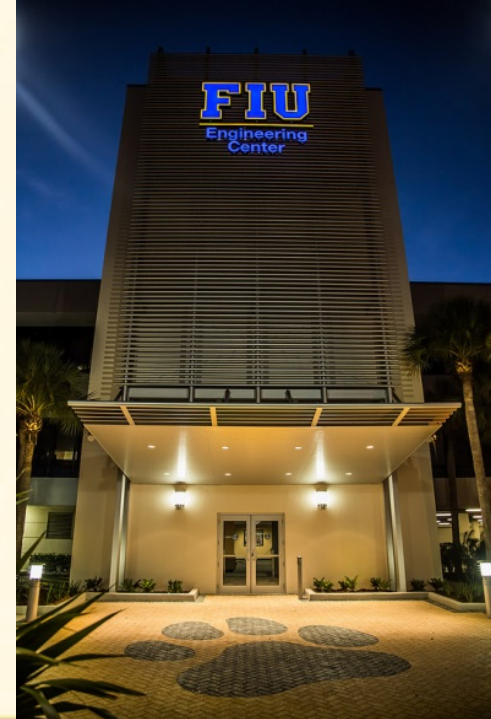
-Engineering Center

-FIU @ Brickell

-Miami Beach Urban Studios

-FIU @ I 75

-FIU On-Line



# Campus Master Plan 2010-2020

## Overall 2020 New Space Needs

### FIU NEEDS

---

ACADEMIC:	951,600 GSF
SUPPORT:	474,200 GSF
RESEARCH:	134,600 GSF
FACILITY SUPPORT:	116,800 GSF
RECREATION:	85,700 GSF
CLINIC:	33,700 GSF
<b>TOTAL:</b>	<b>1,796,500 GSF</b>

---

**HOUSING:** 3, 130 BEDS + Partnerships

### RECREATION FIELDS/COURTS:

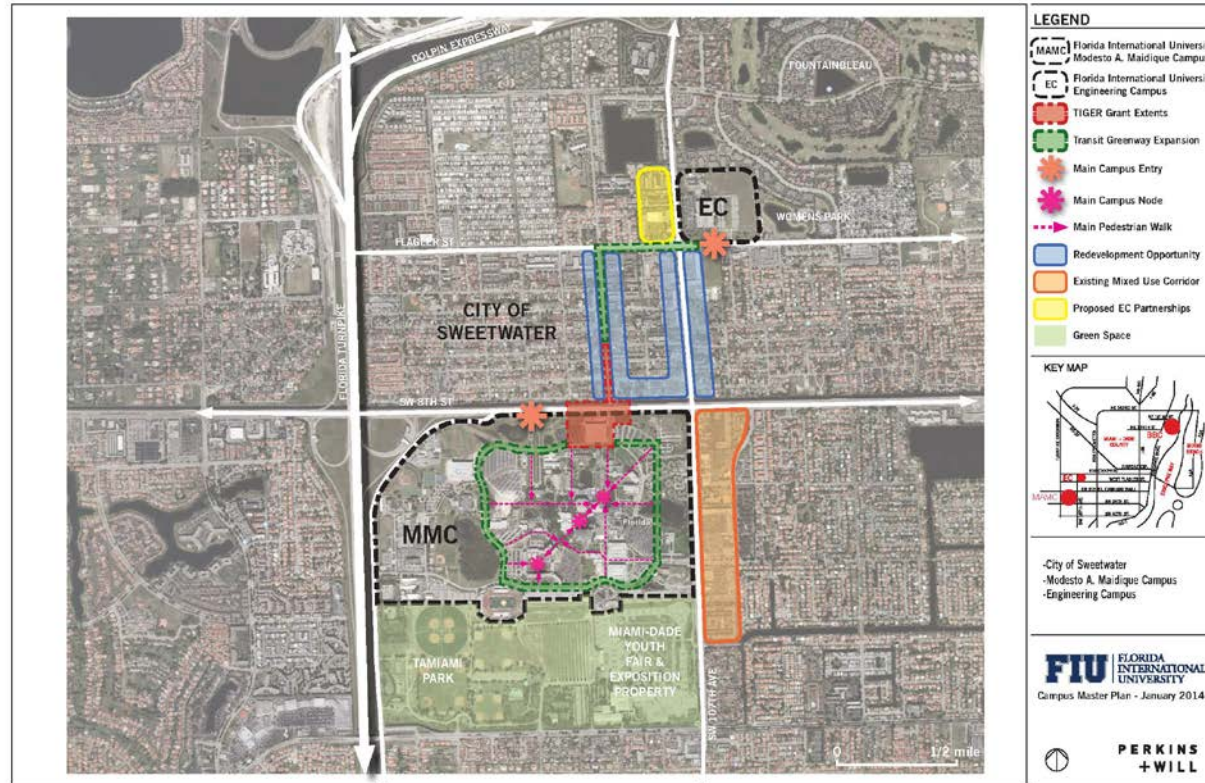
#### NIRSA STANDARDS:

SOCCER/ FOOTBALL FIELDS	3 This assumes continued use of Mourning High
SOFTBALL FIELDS	2 This assumes fields at Tamiami Park are still used
TENNIS COURTS	3
VOLLEYBALL COURTS	2

County LOS: 2.75 acres per 1,000 students.

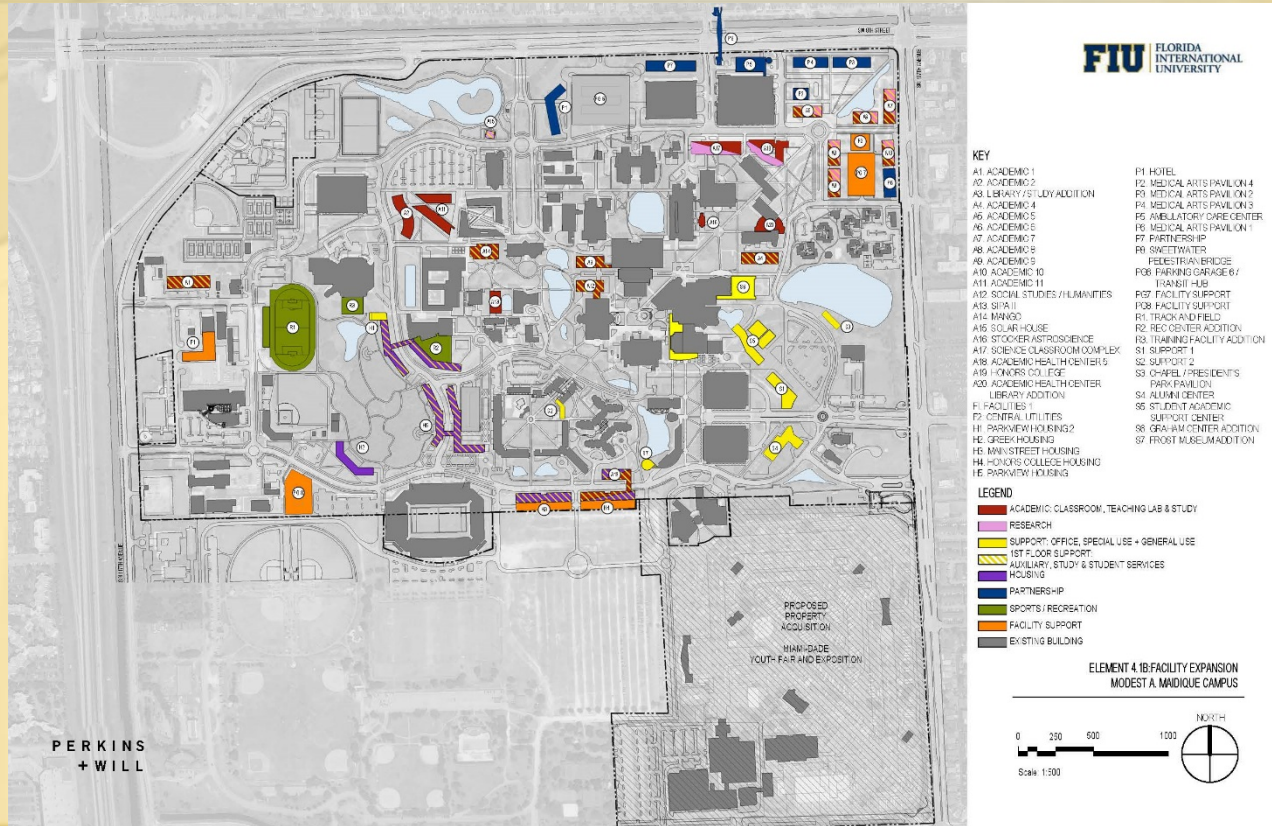


# Campus Master Plan 2010-2020





# Campus Master Plan 2010-2020



**FIU** | Board of Trustees

**PERKINS + WILL**

**FIU | FLORIDA INTERNATIONAL UNIVERSITY**

**LEGEND**

- ACADEMIC + RESEARCH**  
CLASSROOM, LABORATORY, RESEARCH ACADEMIC OFFICE & STUDY (INCLUDES)
- SUPPORT**  
ADMINISTRATIVE OFFICES, AUXILIARY, CAMPUS FACILITIES & CLINICS
- HOUSING**  
UNIVERSITY OWNED / NEW / TO BE CONTROLLED (NEW CAMPUS HOUSING FACILITIES)
- ATHLETIC / RECREATION / OPEN SPACE**  
ATHLETIC, RECREATION & OPEN SPACE FACILITIES
- COMMUNITY INTERFACED**  
UNIVERSITY PROPERTY WITHIN UNIVERSITY CONTROLLED FACILITIES
- MULTI-PURPOSE**  
UNIVERSITY OWNED AND LEASED / SUPPORT, HOUSING, ATHLETIC / RECREATION / OPEN SPACE, COMMUNITY INTERFACED, ASYLUMS, TRANSIT HUB, PARKING

**ELEMENT 4.1A: LAND USE  
MODESTO A. MAIDIQUE CAMPUS**

0 250 500 1000  
Scale: 1:500

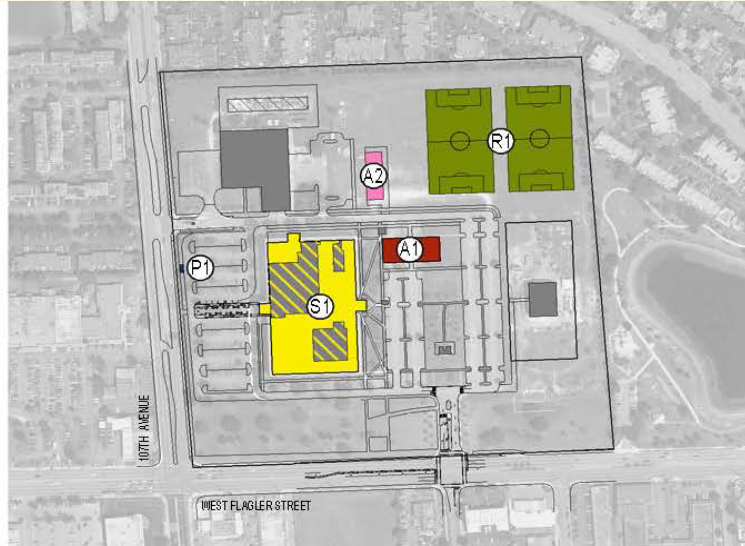
NORTH



# Campus Master Plan 2010-2020



# Campus Master Plan 2010-2020



## KEY

- A1. ENGINEERING BUILDING
- A2. RESEARCH FIELD
- P1. TRANSIT SHELTER
- R1. RECREATION FIELDS
- S1. FIRST FLOOR INFILL / RENOVATION

## LEGEND

- ACADEMIC: CLASSROOM, TEACHING LAB & STUDY
- RESEARCH
- SUPPORT: OFFICE, SPECIAL USE + GENERAL USE
- 1ST FLOOR SUPPORT:  
AUXILIARY, STUDY & STUDENT SERVICES
- HOUSING
- PARTNERSHIP
- SPORTS / RECREATION
- FACILITY SUPPORT
- EXISTING BUILDING



# Campus Master Plan 2010-2020



## LEGEND

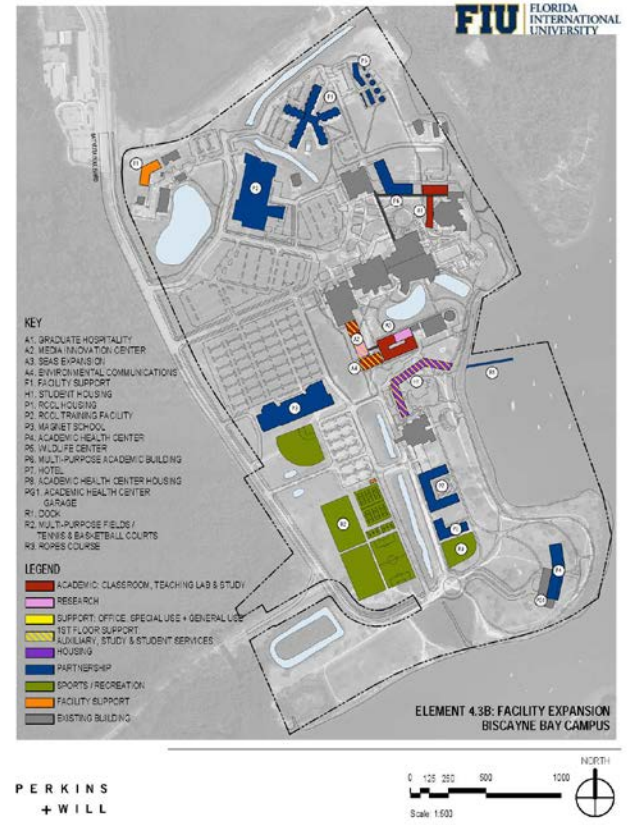
- ACADEMIC + RESEARCH**  
(CLASSROOM, LABORATORY, RESEARCH, ACADEMIC OFFICES & STUDY FACILITIES)
- SUPPORT**  
(ADMINISTRATIVE OFFICES, AUXILIARY, CAMPUS FACILITIES & CLINICS)
- HOUSING**  
(UNIVERSITY & NON-UNIVERSITY CONTROLLED ON-CAMPUS HOUSING FACILITIES)
- ATHLETICS / RECREATION / OPEN SPACE**  
(ATHLETIC, RECREATION & OPEN SPACE FACILITIES)
- COMMUNITY INTERFACE**  
(UNIVERSITY PROPERTY WITH NON-UNIVERSITY CONTROLLED FACILITIES)
- MULTI-PURPOSE**  
(INTEGRATED ACADEMIC & RESEARCH, SUPPORT, HOUSING, ATHLETICS / RECREATION / OPEN SPACE, COMMUNITY INTERFACE, AUXILIARY, TRANSIT HUB & PARKING)

# Campus Master Plan 2010-2020

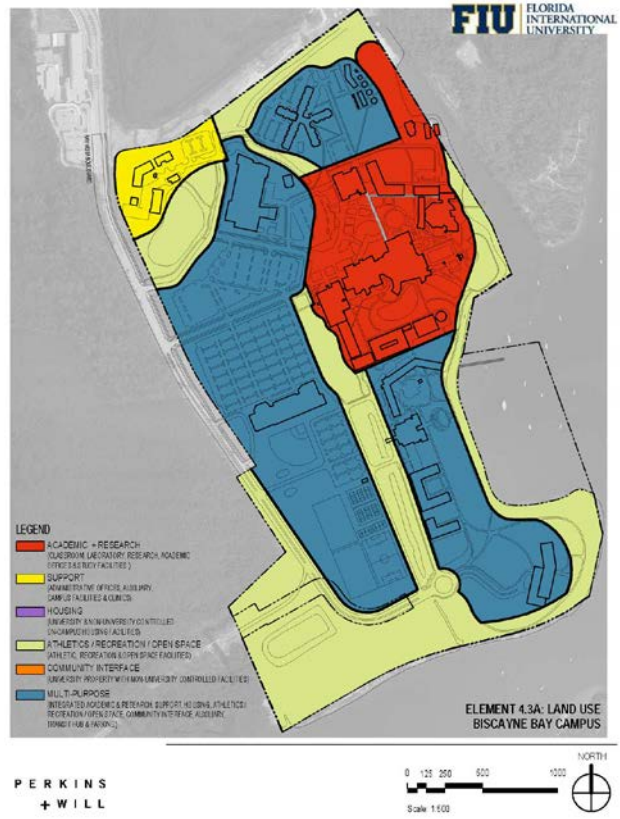




# Campus Master Plan 2010-2020



# Campus Master Plan 2010-2020





# Campus Master Plan 2010-2020

