

# Campus Master Plan 2010-2020

## Public Hearing #1



# **Campus Master Plan 2010-2020**

## **Public Hearing #1 Agenda**

- 1. Planning Schedule**
- 2. Evaluation & Appraisal Report (EAR)**
- 3. Campus Master Plan – Elements & Vision**
- 4. Strategic Assumptions**
- 5. Draft Comprehensive Master Plan Review**
- 6. Discussion / Q&A**



# Campus Master Plan 2010-2020



## Links

- » [FIU Home](#)
- » [FMD Home](#)
- » [FIU Phonebook](#)

## Master Plans

[CAMPUS MASTER PLANS 2005-2015](#) Adopted by BOT, September 24, 2010

[CAMPUS MASTER PLANS 2010-2020](#) - **DRAFT**

<http://facilities.fiu.edu/planning/masterplans>

# Master Planning Schedule

**First Public Hearing**

**July 15 & 16, 2013**

**Public Review Period**

**90 days**

**Final Comprehensive Master Plan**

**Dec 2013**

**Second Public Hearing**

**Jan 2014**

**BOT Approval of Master Plan**

**Feb 2014**



# E.A.R. SUMMARY 2

# Major Issues: 2012 Evaluation / Appraisal Report

- **Overcrowding at Modesto Maidique Campus**
- **Accountability Measures to Exceptions to the Campus Master Plan**
- **Parking Availability / Accessibility & Transportation Options**
- **Traffic Congestion / Roadway Capacity**
- **Student Housing Demand**
- **Recreation & Open Space Preservation**
- **Land Use Constraints**
- **Future of Biscayne Bay Campus & Engineering Center**
- **Campus Identity: Architecture and Landscaping**
- **Improved Relations with Host Communities**

# Major Planning Goals

- Develop a Sustainable Campus Environment
- Develop better options with Transportation and Access
- Establish better Connectivity with Neighboring Communities
- Meet Increased Enrollment: Academic & Research, Housing
- Optimize Development within Land Use Constraints



# ELEMENTS & VISION 3

# University-Wide Campus Master Plan Elements

-State Required Elements

-Optional Elements



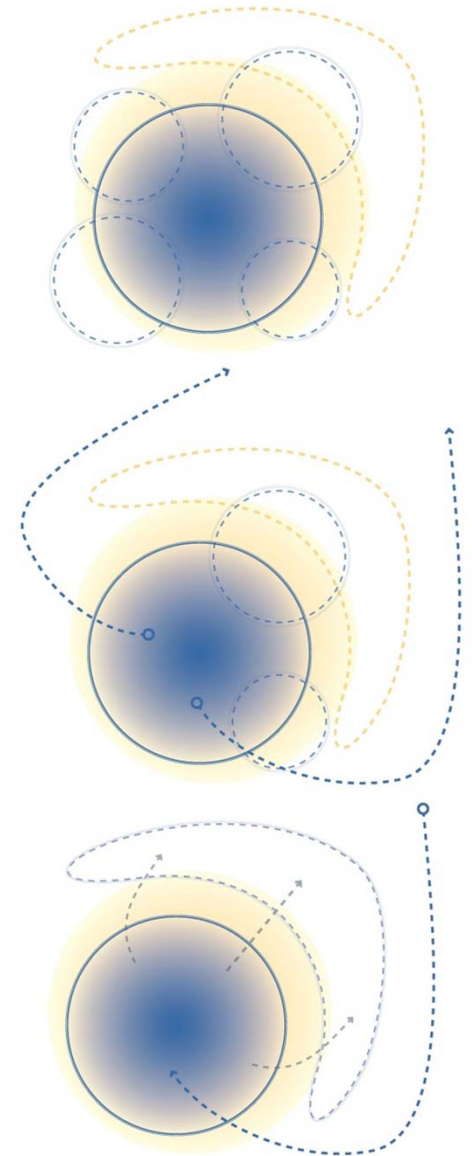
# VISION – Driving Forces & Key Characteristics

## Driving Forces:

- Building Institutional Brand and Legacy
- Creating Campus Sustainability & Resiliency
- Positioning Partnerships and Entrepreneurship
- Engaging Community Resources and Residents
- Ensuring Successful Students

## Key Characteristics:

- Clear Nodes and Neighborhoods
- Strengthened Campus Core
- Expanded Academic Enterprise for STEM and Career FIRST
- Flexible / Future Expansion





# FIU 2010-2020 Campus Guiding Principles

- Develop a **sustainable** campus environment.
- Develop forward looking, **innovative and interdisciplinary** learning and research environments.
- **Reinforce FIU's identity** through the articulation of landmarks, precincts, edges, buildings, and open spaces.
- Create a more **compact urban environment**.
- Develop comprehensive **multi-modal solutions to transportation & infrastructure**.
- Establish better **connectivity with neighboring communities**.
- Create a safe, connected, **pedestrian-friendly** campus.
- Site core academic programs along **main axes**.
- Develop **student life mixed use communities**.
- Foster learning through **multipurpose open space**.

# ASSUMPTIONS 4

# Mission Driven Planning

Florida International University is an **urban**, multi-campus, **public research** university serving its students and the diverse population of South Florida. We are committed to **high-quality teaching**, state-of-the-art **research and creative activity**, and **collaborative engagement** with our **local** and **global** communities.





# FIU “World’s Ahead” Strategic Plan & Campus Master Plan

- 2010-2020 Master Plan Update will align with FIU’s Strategic Plan
- Additional 2,000 students/year growth projections = 20,000 within 10 years
- Transportation, Services, Public Facilities, and Natural Resources Impacts will be assessed
- Direct and Design *How* and *Where* FIU will grow
- Guide FIU’s strategic growth decisions, capital planning, and implementation

# Space Needs Assumptions 2010-2020

**Growth rate of Enrollment 25% and Research 36%**  
**2,000 students per year growth across;**

- Modesto A. Maidique Campus
- Biscayne Bay Campus
- Engineering Center
- Downtown
- Miami Beach
- Broward-Pines Center

**Shift to more International, Full time, and Online**  
**Collaborative Content Areas:**

- Arts, Environment, Globalization, and Health

**Enrollment basis:**

- Undergraduate= 81% of FTE
- Graduate Studies = 19% of FTE

**Housing Target = 8-10.5% of FIU total HC**

**Parking Target = 34% of FTE**



# Overall 2020 New Space Needs

## FIU NEEDS

---

ACADEMIC:	951,600 GSF
SUPPORT:	474,200 GSF
RESEARCH:	134,600 GSF
FACILITY SUPPORT:	116,800 GSF
RECREATION:	85,700 GSF
CLINIC:	33,700 GSF
TOTAL:	1,796,500 GSF

HOUSING: 3,295 BEDS

## RECREATION FIELDS/ COURTS:

### NIRSA STANDARDS:

SOCCER/ FOOTBALL FIELDS

SOFTBALL FIELDS

TENNIS COURTS

VOLLEYBALL COURTS

3 This assumes continued use of Mourning High

2 This assumes fields at Tamiami Park are still used

3

2

**County LOS:** 2.75 acres per 1,000 students.



# DRAFT CMP REVIEW 5

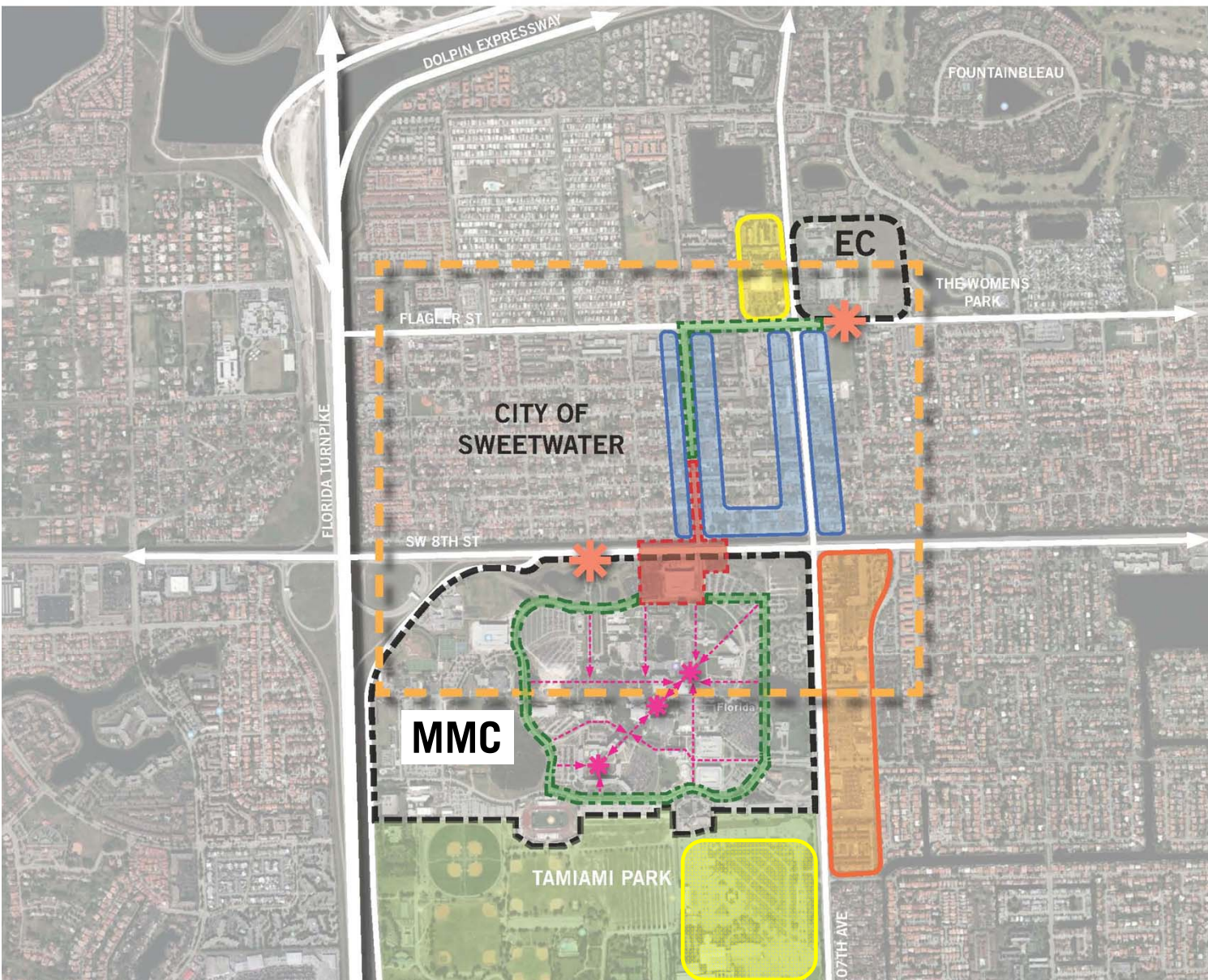


# MODESTO A. MAIDIQUE CAMPUS





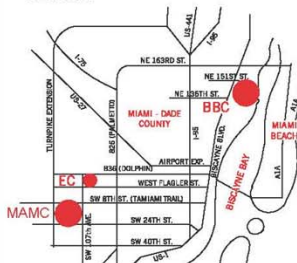
# MMC and EC Campus Context



### LEGEND

-  Florida International University  
Modesto A. Maidique Campus
-  Florida International University  
Engineering Campus
-  TIGER Grant Extents
-  Transit Greenway Expansion
-  Main Campus Entry
-  Main Campus Node
-  Main Pedestrian Walk
-  Redevelopment Opportunity
-  Existing Mixed Use Corridor
-  Proposed Partnership
-  Green Space

## KEY MAP

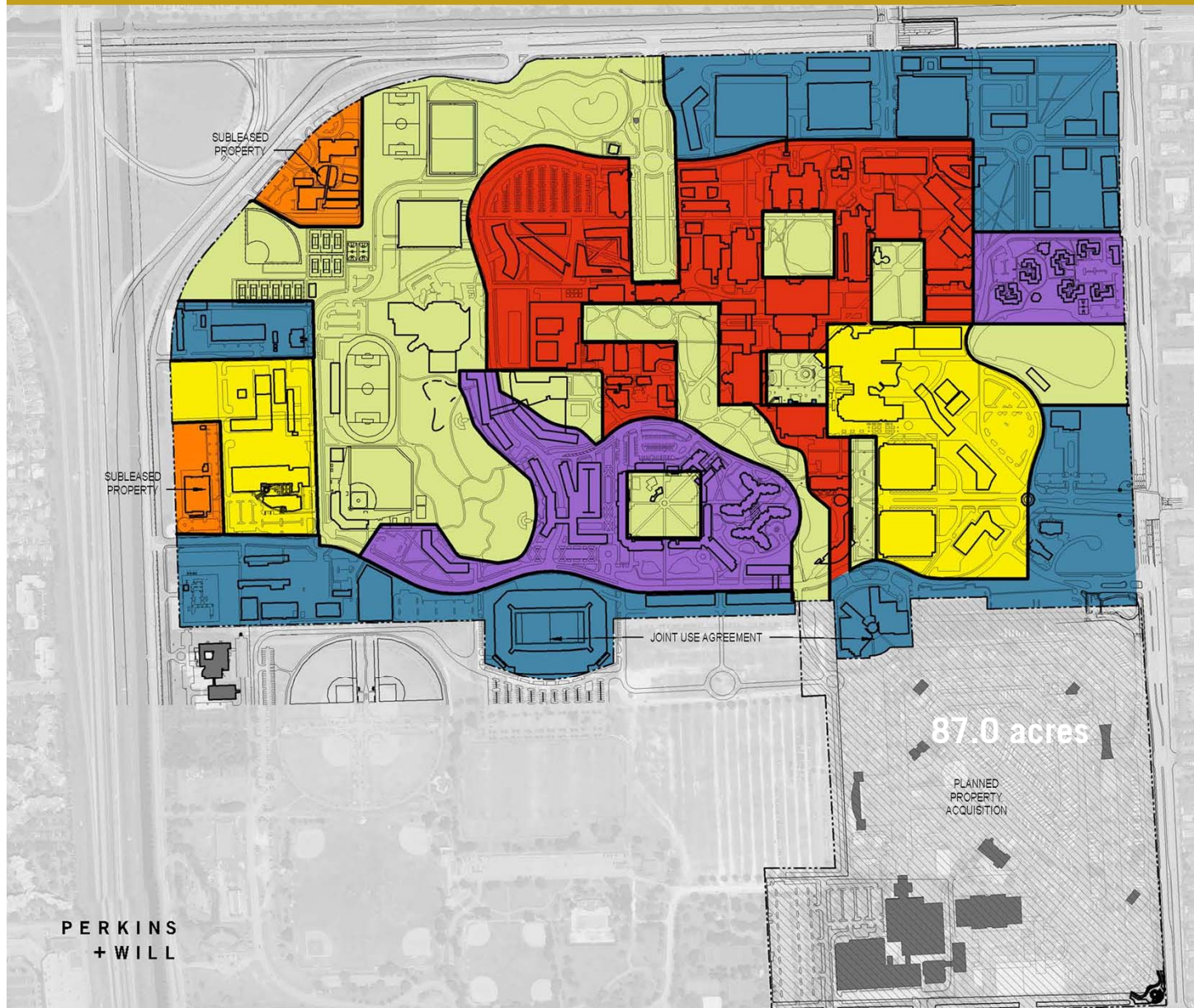


- City of Sweetwater
- Modesto A. Maidique Campus
- Engineering Campus



# MODESTO A. MAIDIQUE CAMPUS: LAND USE PLAN

342.2 acres



## LEGEND

- ACADEMIC + RESEARCH**  
(CLASSROOM, LABORATORY, RESEARCH, ACADEMIC OFFICES & STUDY FACILITIES)
- SUPPORT**  
(ADMINISTRATIVE OFFICES, AUXILIARY, CAMPUS FACILITIES & CLINICS)
- HOUSING**  
(UNIVERSITY & NON-UNIVERSITY CONTROLLED ON-CAMPUS HOUSING FACILITIES)
- ATHLETICS / RECREATION / OPEN SPACE**  
(ATHLETIC, RECREATION & OPEN SPACE FACILITIES)
- COMMUNITY INTERFACE**  
(UNIVERSITY PROPERTY WITH NON-UNIVERSITY CONTROLLED FACILITIES)
- MULTI-PURPOSE**  
(INTEGRATED ACADEMIC & RESEARCH, SUPPORT, HOUSING, ATHLETICS / RECREATION / OPEN SPACE, COMMUNITY INTERFACE, AUXILIARY & PARKING)

## ELEMENT 4.1A: LAND USE MODESTO A. MAIDIQUE CAMPUS





# MODESTO A. MAIDIQUE CAMPUS: 2020 FACILITIES PLAN



## KEY

- |                                |                                |
|--------------------------------|--------------------------------|
| A1. ACADEMIC 1                 | P1. HOTEL                      |
| A2. ACADEMIC 2                 | P2. MAP 4                      |
| A3. ACADEMIC 3                 | P3. MAP 2                      |
| A4. ACADEMIC 4                 | P4. MAP 3                      |
| A5. ACADEMIC 5                 | P5. ACC                        |
| A6. ACADEMIC 6                 | P6. MAP 1                      |
| A7. ACADEMIC 7                 | P7. PARTNERSHIP                |
| A8. ACADEMIC 8                 | PG7. FACILITY SUPPORT          |
| A9. ACADEMIC 9                 | PG8. FACILITY SUPPORT          |
| A10. ACADEMIC 10               | R1. EXPANDED TRACK AND FIELD   |
| A11. ACADEMIC 11               | R2. REC CENTER EXPANSION       |
| A12. SOCIAL SCIENCES           | R3. EXPANDED TRAINING FACILITY |
| A13. HUMANITIES CENTER         | S1. SUPPORT 1                  |
| A14. MANGO                     | S2. SUPPORT 2                  |
| A15. SOLAR HOUSE               | S3. PRESIDENT'S PARK PAVILLION |
| A16. STOCKER ASTROSCIENCE      | S4. ALUMNI CENTER              |
| A17. SCIENCE CLASSROOM COMPLEX | S5. STUDENT ACADEMIC           |
| A18. ACADEMIC HEALTH CENTER 5  | S6. GRAHAM CENTER EXPANSION    |
| F1. FACILITIES 1               | S7. FROST MUSEUM EXPANSION     |
| F2. CENTAL UTILITIES           |                                |
| H1. PARKVIEW HOUSING 2         |                                |
| H2. GREEK HOUSING              |                                |
| H3. MAIN STREET HOUSING        |                                |
| H4. PARKVIEW HOUSING           |                                |

## LEGEND

- ACADEMIC: CLASSROOM, TEACHING LAB & STUDY
- RESEARCH
- SUPPORT: OFFICE, SPECIAL USE + GENERAL USE
- 1ST FLOOR SUPPORT: AUXILIARY, STUDY & STUDENT SERVICES
- HOUSING
- PARTNERSHIP
- SPORTS / RECREATION
- FACILITY SUPPORT

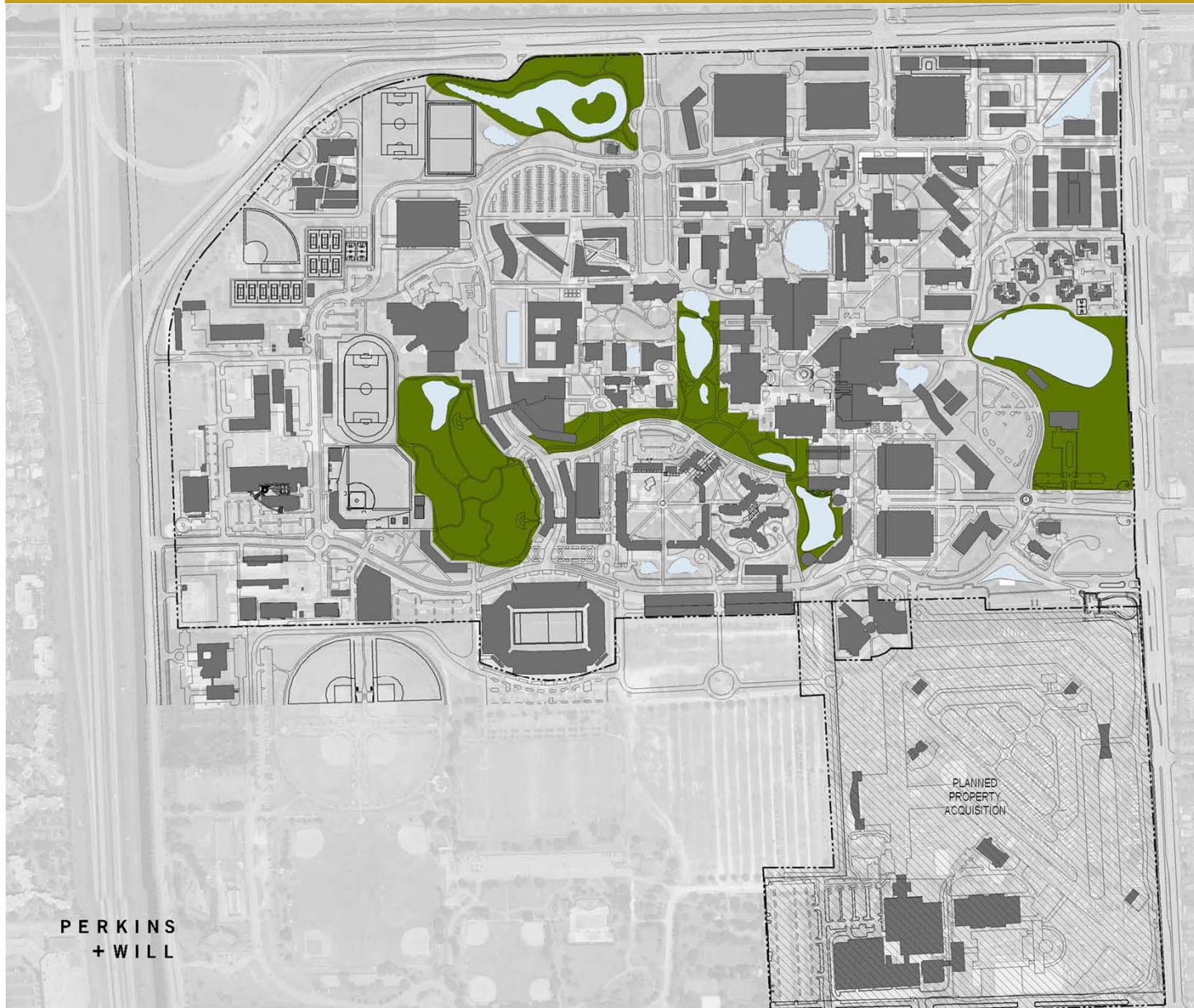
ELEMENT 4.1B: FACILITY EXPANSION  
MODESTO A. MAIDIQUE CAMPUS



PERKINS  
+ WILL



# MODESTO A. MAIDIQUE CAMPUS: CONSERVATION



**FIU** FLORIDA  
INTERNATIONAL  
UNIVERSITY

## LEGEND

- CAMPUS PARK
- LANDSCAPE BUFFER
- WATER
- PROPOSED / EXISTING BUILDING
- EXISTING TREE

## ELEMENT 13.1: CONSERVATION MODESTO A. MAIDIQUE CAMPUS





# MODESTO A. MAIDIQUE CAMPUS: OPEN SPACE

**FIU** FLORIDA  
INTERNATIONAL  
UNIVERSITY

## KEY

- R1. EXPANDED TRACK AND FIELD
- R2. REC CENTER EXPANSION
- R3. EXPANDED TRAINING FACILITY

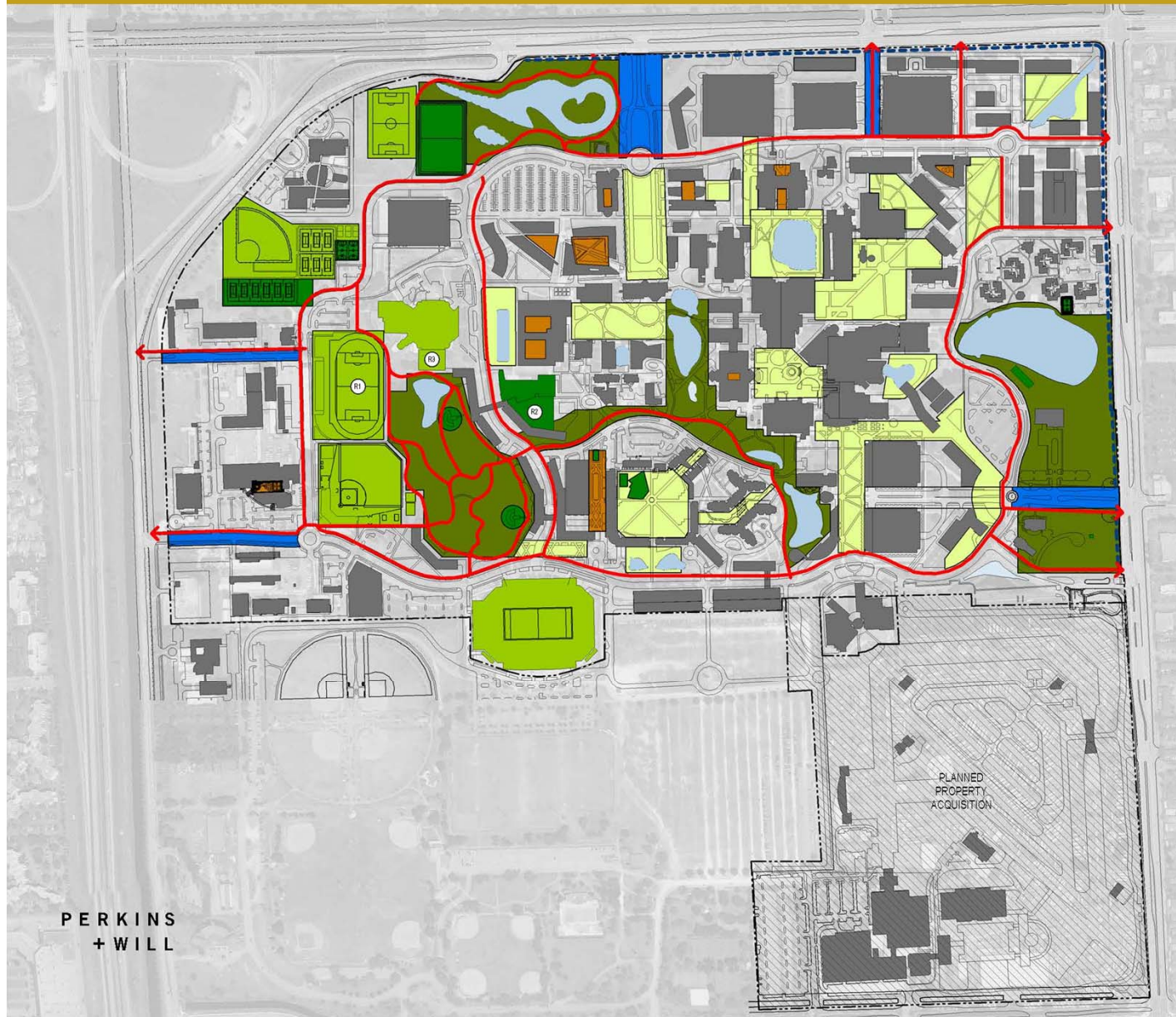
## LEGEND

- MULTI PURPOSE OPEN SPACE
- ATHLETICS
- SPECIAL PURPOSE OPEN SPACE
- RECREATION
- COURTYARD/PLAZA
- CAMPUS GATEWAY
- SURFACE WATER
- PROPOSED / EXISTING BUILDING
- RECREATION PATH
- STREETSCAPE

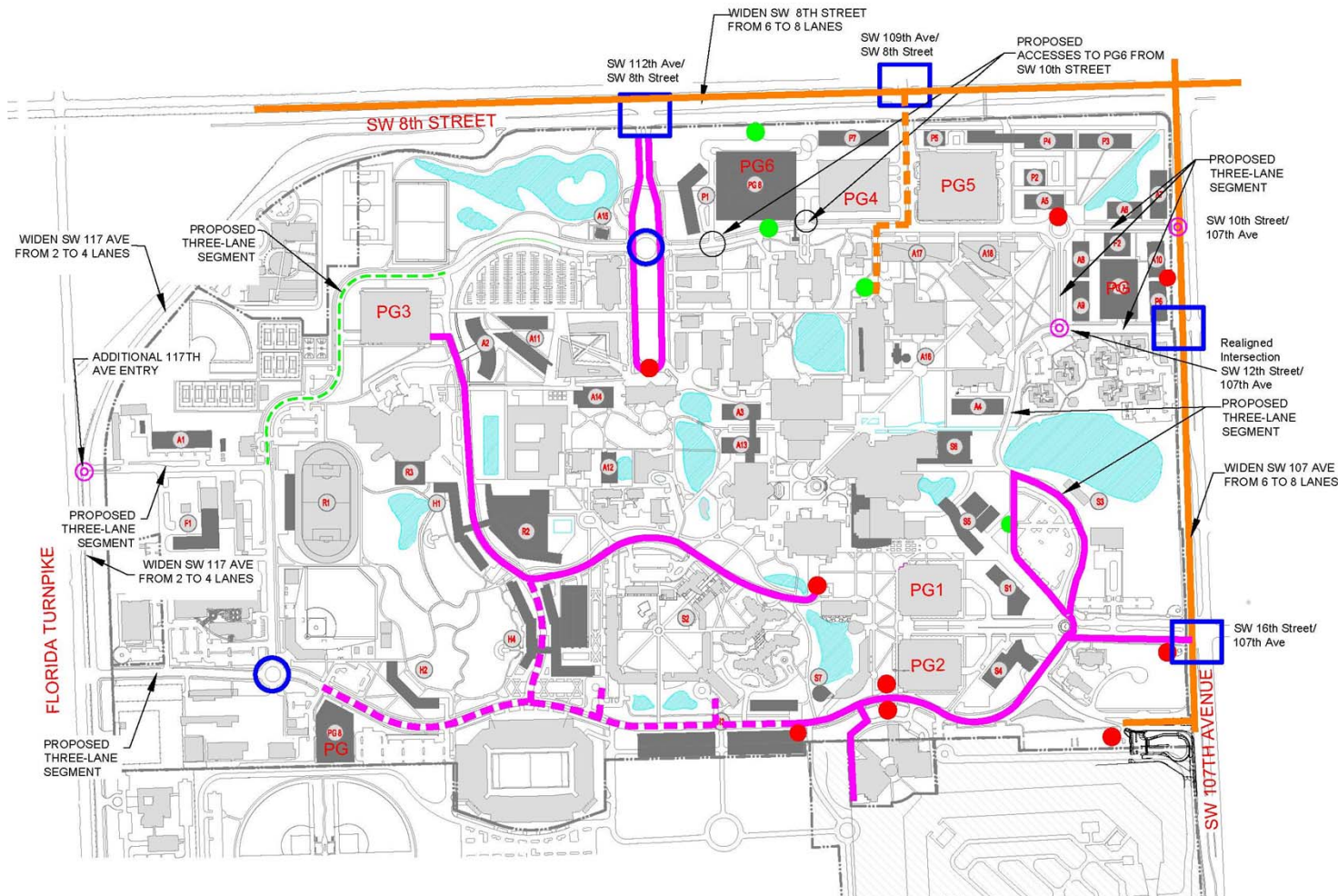
ELEMENT 8.1: RECREATION AND OPEN SPACE  
MODESTO A. MAIDIQUE CAMPUS



PERKINS  
+ WILL



# MODESTO A. MAIDIQUE CAMPUS: TRANSPORTATION



## Traffic Improvements

Realignment of loop road to west of PG3

Providing parking with future development projects

New MMC access from 117th and 107th

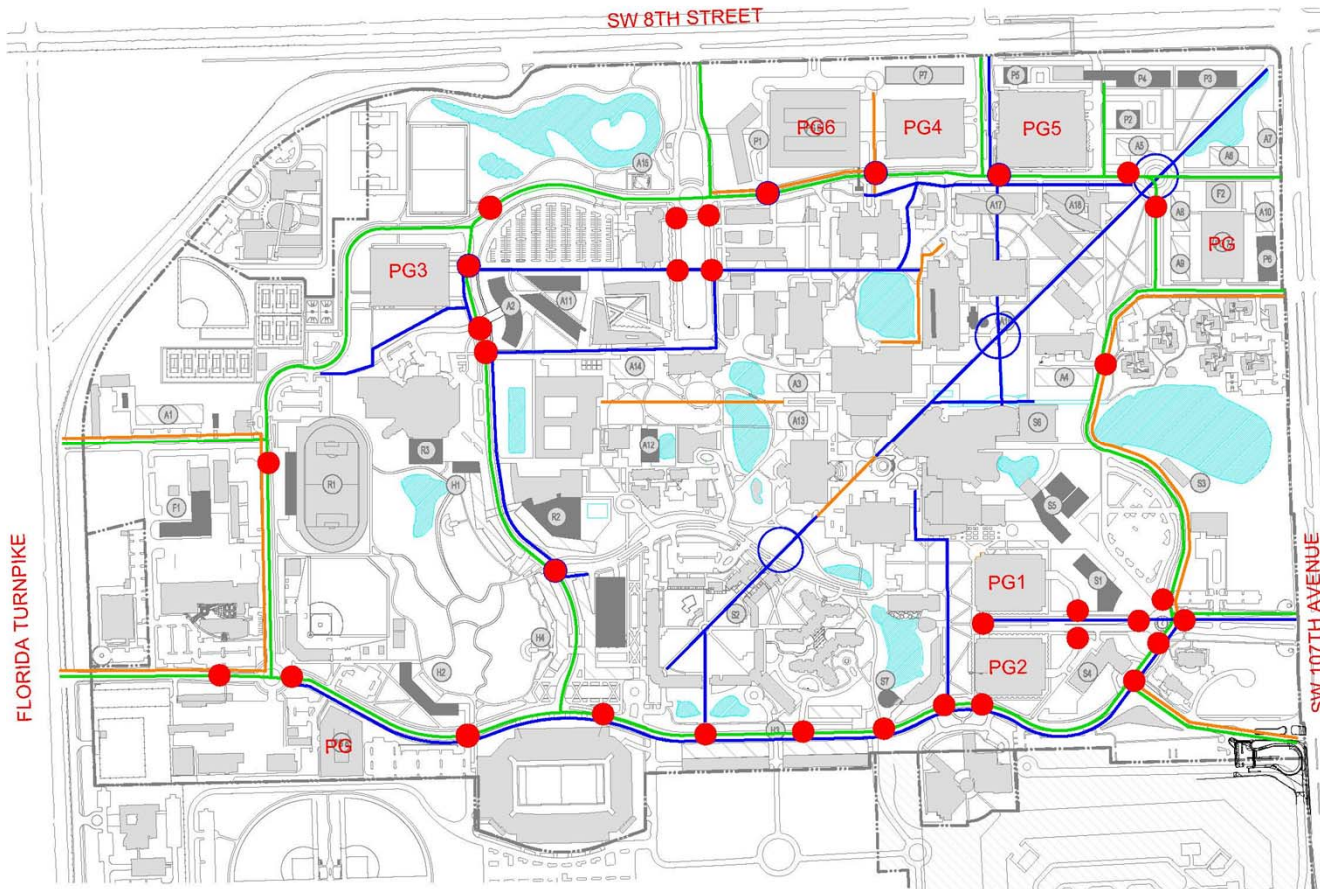
8th Street intersection improvements at 112th and 109th

Enhanced campus transit/shuttle service

New traffic circles



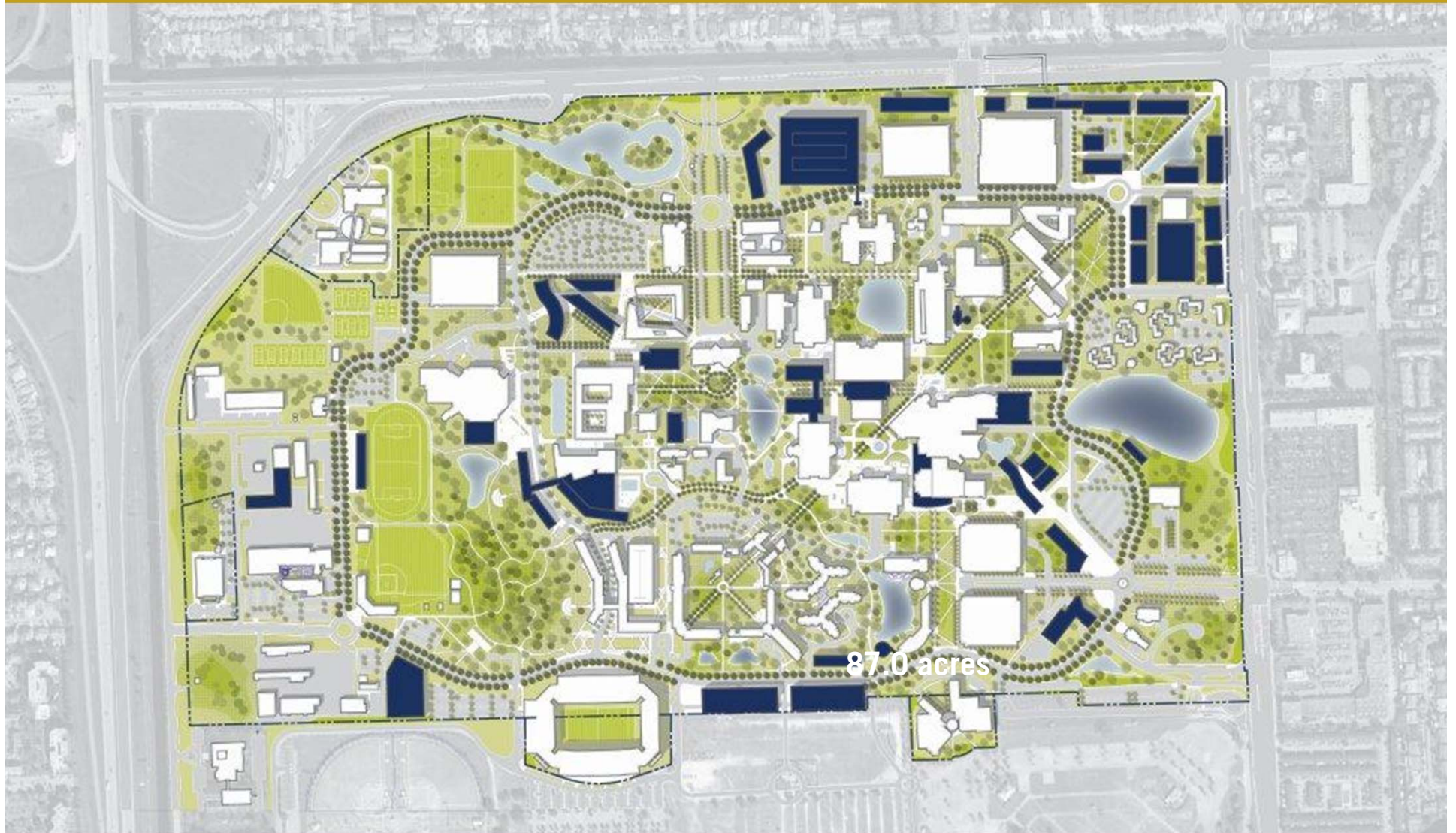
# MODESTO A. MAIDIQUE CAMPUS: TRANSPORTATION



## Bike/Pedestrian Improvements

- Improve pedestrian connectivity to transit
- Strengthen pedestrian links along MMC key axes
- Provide walkable / accessible campus streets with bike lanes and walks.
- Create connectivity with Sweetwater and County by continuing to enhance off campus walks and bike routes.

# MODESTO A. MAIDIQUE CAMPUS: 2020 PLAN



15/16 JULY 2013

PERKINS+WILL



# ENGINEERING CENTER



# ENGINEERING CENTER: LAND USE PLAN

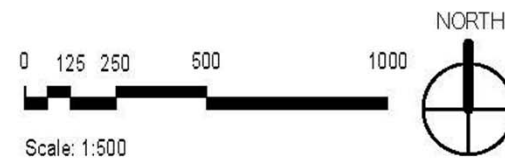
36.0 acres



## LEGEND

- **ACADEMIC + RESEARCH**  
(CLASSROOM, LABORATORY, RESEARCH, ACADEMIC OFFICES & STUDY FACILITIES)
- **SUPPORT**  
(ADMINISTRATIVE OFFICES, AUXILIARY, CAMPUS FACILITIES & CLINICS)
- **HOUSING**  
(UNIVERSITY & NON-UNIVERSITY CONTROLLED ON-CAMPUS HOUSING FACILITIES)
- **ATHLETICS / RECREATION / OPEN SPACE**  
(ATHLETIC, RECREATION & OPEN SPACE FACILITIES)
- **COMMUNITY INTERFACE**  
(UNIVERSITY PROPERTY WITH NON-UNIVERSITY CONTROLLED FACILITIES)
- **MULTI-PURPOSE**  
(INTEGRATED ACADEMIC & RESEARCH, SUPPORT, HOUSING, ATHLETICS / RECREATION / OPEN SPACE, COMMUNITY INTERFACE, AUXILIARY & PARKING)

15/16 JULY 2013





# ENGINEERING CENTER: 2020 FACILITIES PLAN



## KEY

- A1. ACADEMIC 1
- A2. RESEARCH FIELD
- R1. RECREATION FIELDS
- R2. TRANSIT PLAZA
- S1. FIRST FLOOR INFILL

## LEGEND

- ACADEMIC: CLASSROOM, TEACHING LAB & STUDY
- RESEARCH
- SUPPORT: OFFICE, SPECIAL USE + GENERAL USE
- 1ST FLOOR SUPPORT: AUXILIARY, STUDY & STUDENT SERVICES
- HOUSING
- PARTNERSHIP
- SPORTS / RECREATION
- FACILITY SUPPORT

15/16 JULY 2013

0 125 250 500 1000






Scale: 1:500



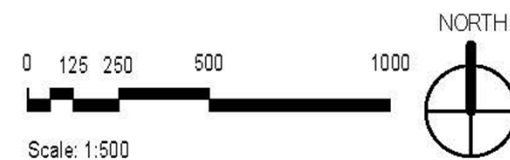
# ENGINEERING CENTER: CONSERVATION



## LEGEND

-  LANDSCAPE BUFFER
-  PROPOSED / EXISTING BUILDING
-  EXISTING TREE

15/16 JULY 2013



# ENGINEERING CENTER: OPEN SPACE



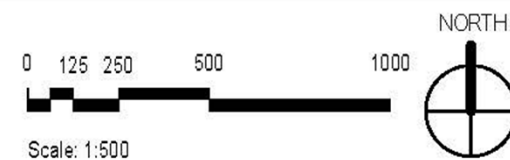
## KEY

R1. RECREATION FIELDS  
R2. TRANSIT PLAZA

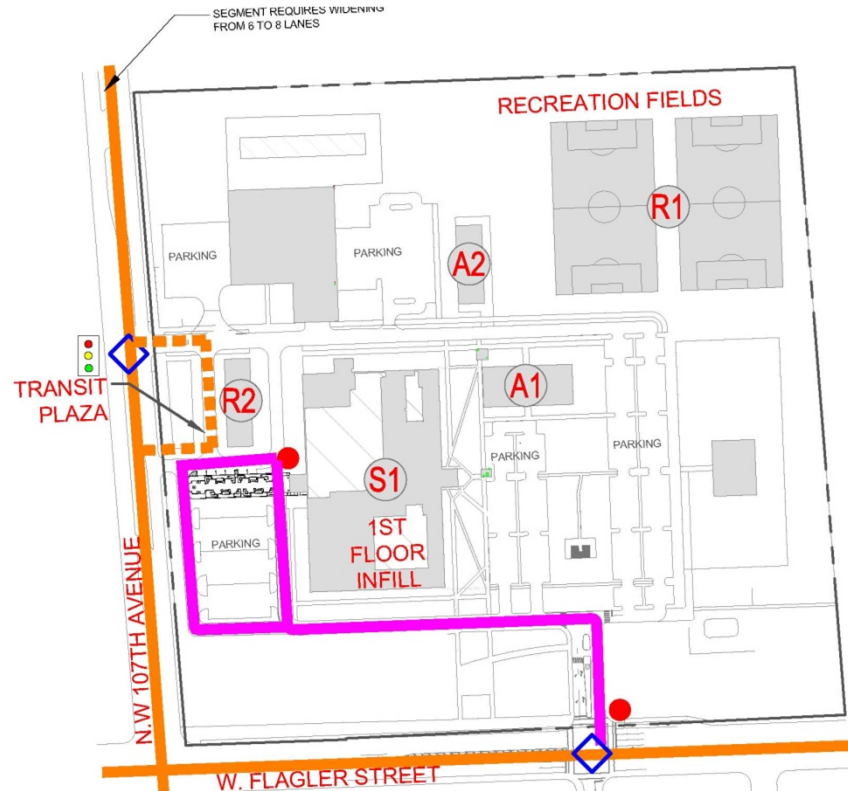
## LEGEND

- MULTI PURPOSE OPEN SPACE
- ATHLETICS
- SPECIAL PURPOSE OPEN SPACE
- RECREATION
- COURTYARD/PLAZA
- CAMPUS GATEWAY
- SURFACE WATER
- PROPOSED / EXISTING BUILDING
- RECREATION PATH
- STREETSCAPE

15/16 JULY 2013



# ENGINEERING CENTER: TRANSPORTATION



## Traffic Improvements

Provide a transit hub along 107<sup>th</sup> Avenue

Create strong pedestrian connection to Women's park east of campus.

Potential signalization for 107<sup>th</sup> Avenue entry.



# ENGINEERING CENTER: 2020 PLAN



15/16 JULY 2013

PERKINS+WILL



# BISCAYNE BAY CAMPUS





# BISCAYNE BAY CAMPUS

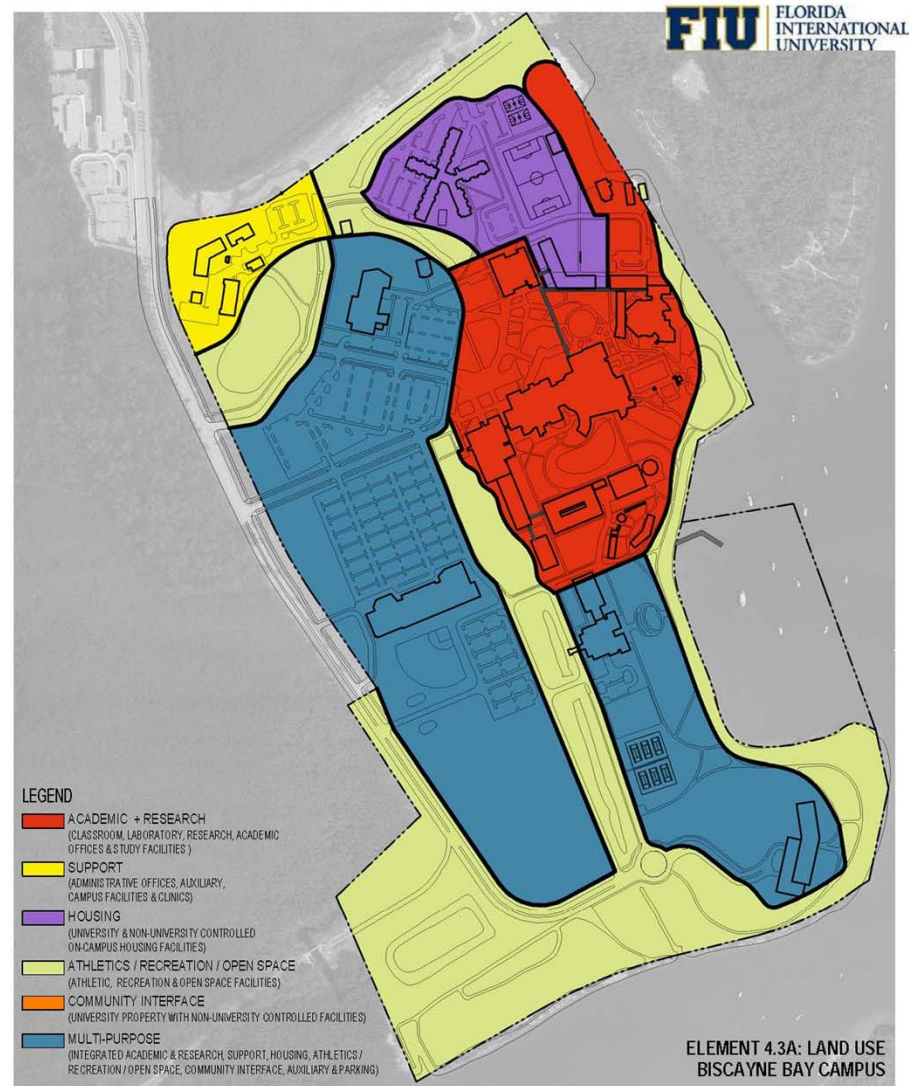
## Context Area Map





# BISCAYNE BAY CAMPUS: LAND USE

195.0 acres



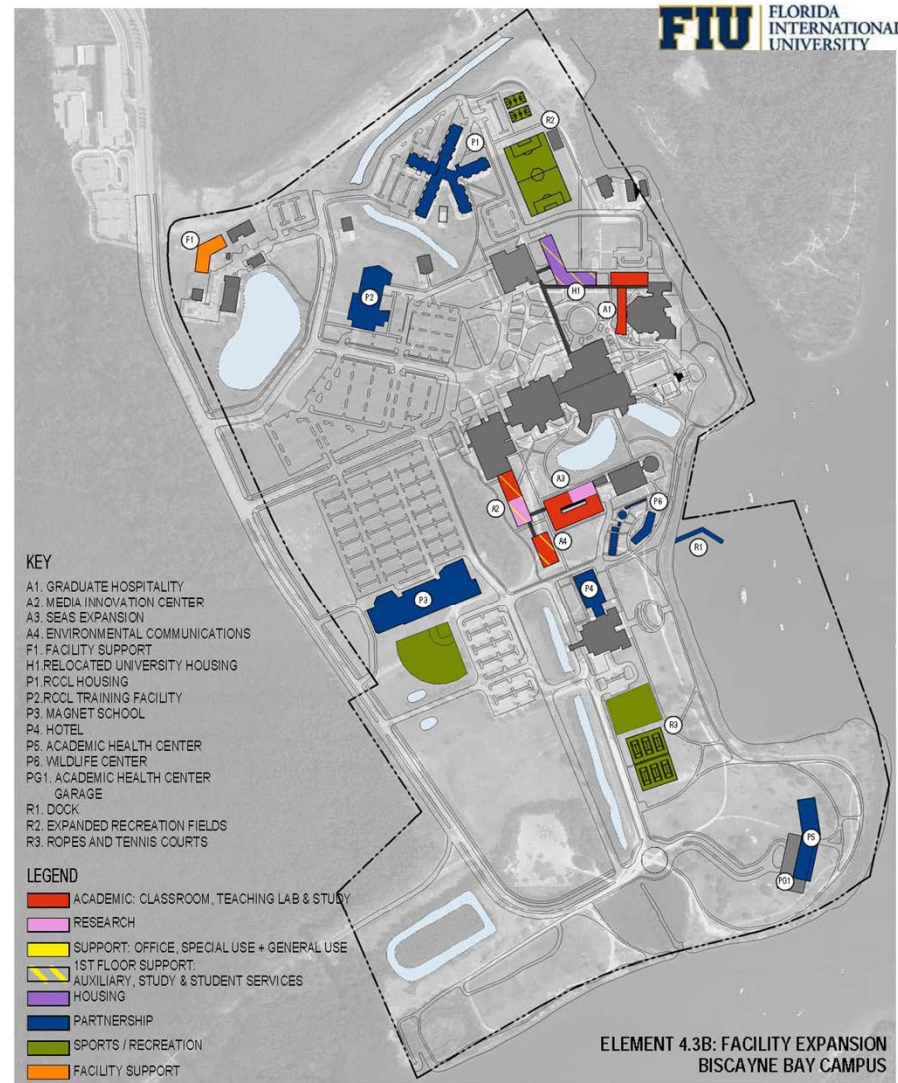
15/16 JULY 2013

PERKINS  
+ WILL



PERKINS+WILL

# BISCAYNE BAY CAMPUS: 2020 FACILITIES PLAN



15/16 JULY 2013

PERKINS  
+ WILL



PERKINS+WILL

# BISCAYNE BAY CAMPUS: CONSERVATION



15/16 JULY 2013

PERKINS  
+ WILL



PERKINS+WILL

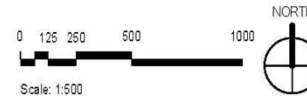


# BISCAYNE BAY CAMPUS: COASTAL MANAGEMENT



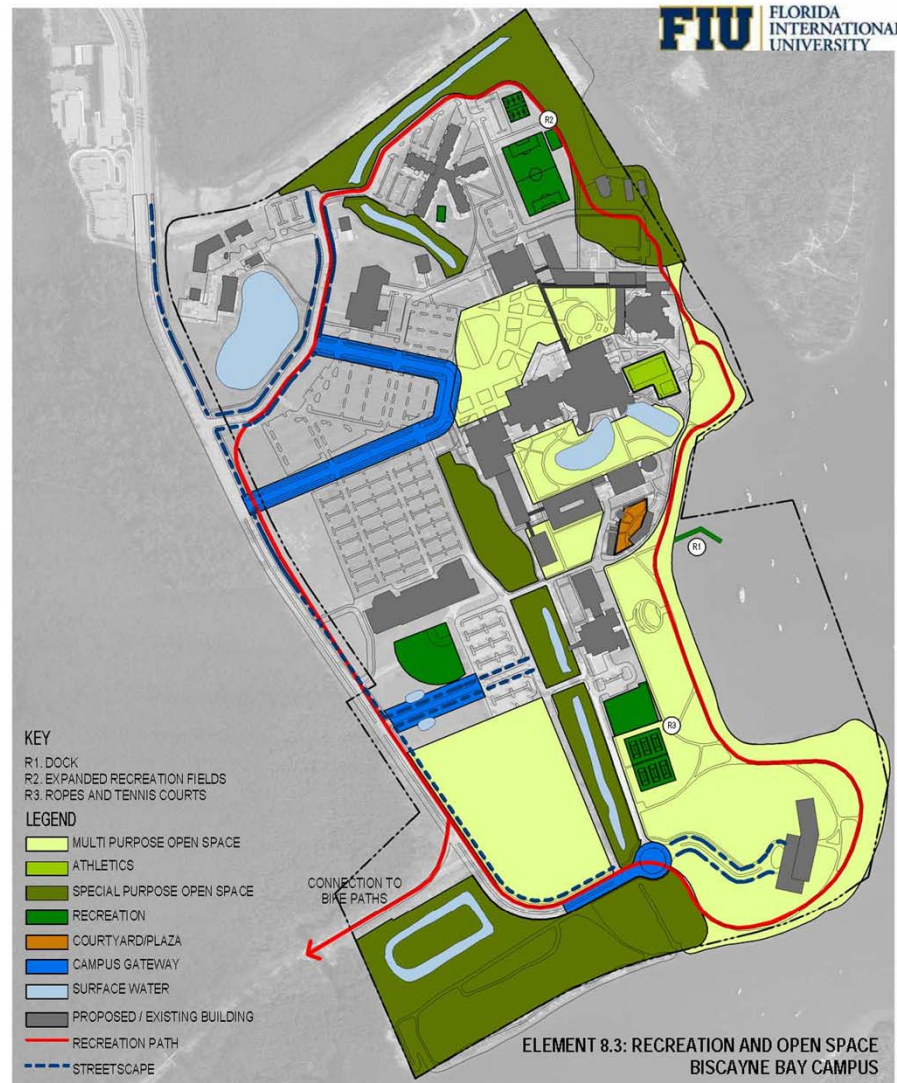
15/16 JULY 2013

PERKINS  
+ WILL



PERKINS+WILL

# BISCAYNE BAY CAMPUS: OPEN SPACE



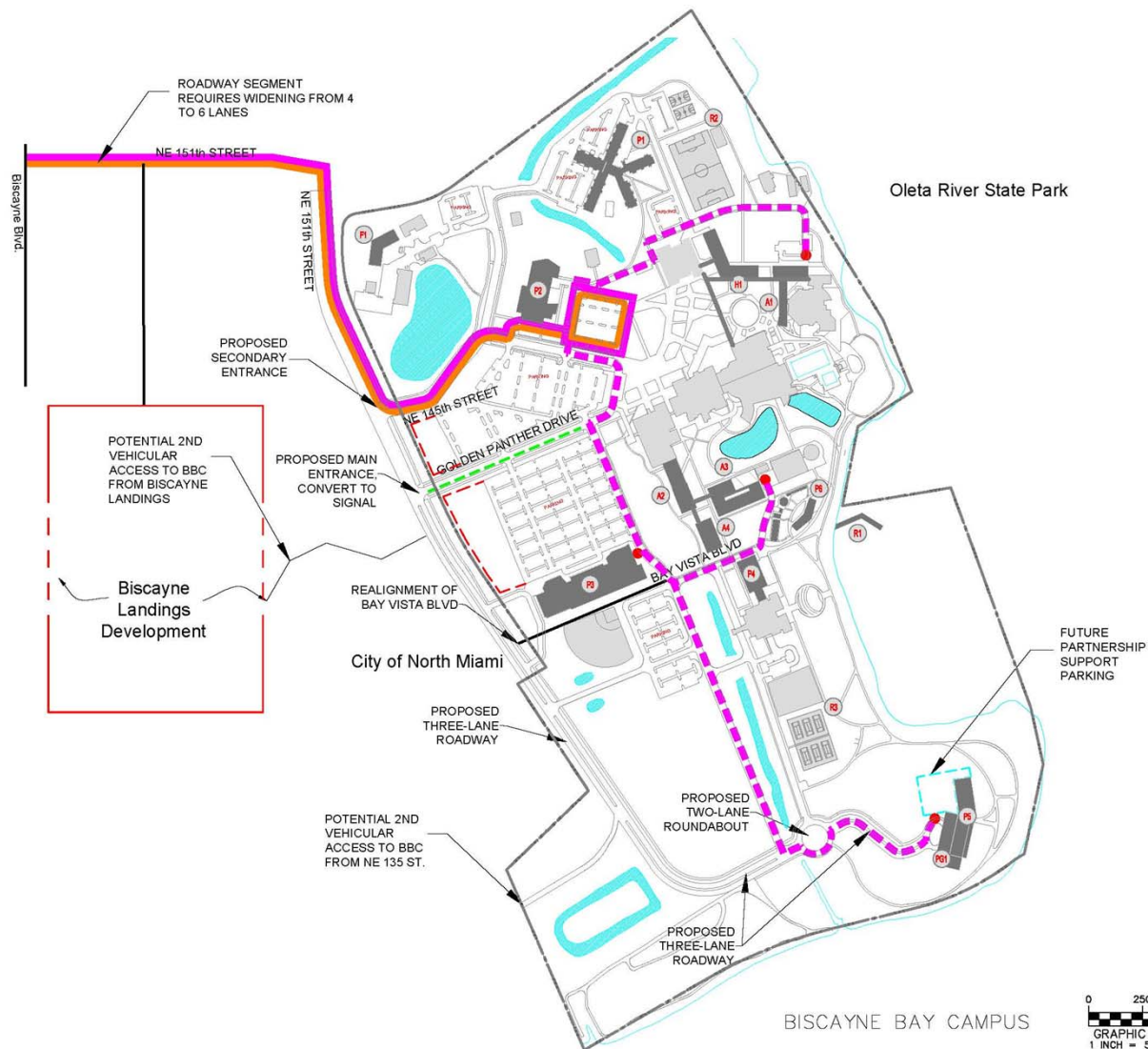
15/16 JULY 2013

PERKINS  
+ WILL



PERKINS+WILL

# BISCAYNE BAY CAMPUS: TRANSPORTATION



## Traffic Improvements

Biscayne Boulevard intersection improvements

Provide a second access to BBC that alleviate volumes on 151<sup>st</sup>/Bay Vista and improve safety.

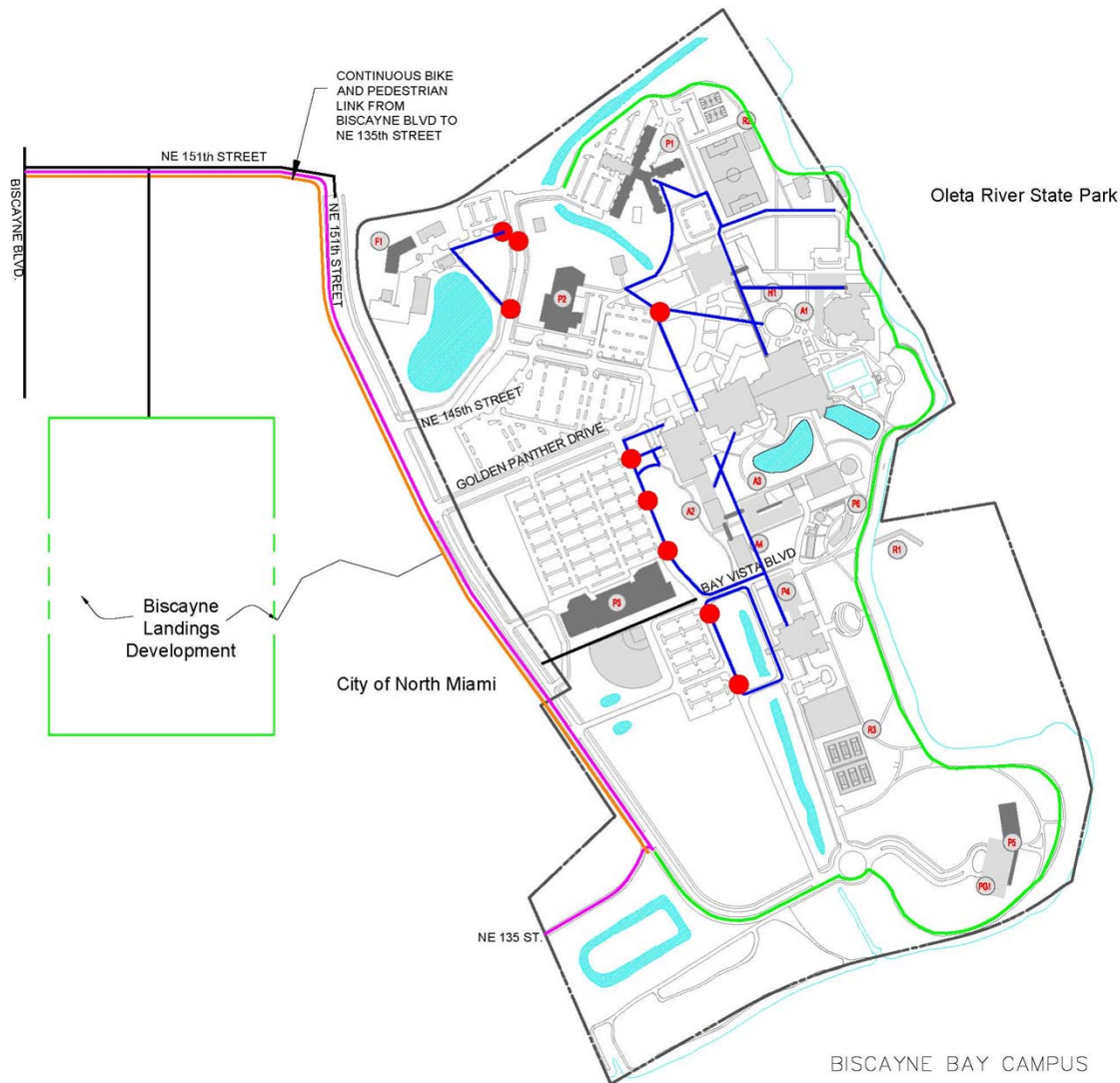
Move primary entry to Bay Vista and Golden Panther Drive with signal.

Widen Bay Vista to south of campus to support partnership projects and BBC growth.

Enhance campus transit system.



# BISCAYNE BAY CAMPUS: TRANSPORTATION



## Bike/Pedestrian Improvements

- Continuous bike and pedestrian facilities to Biscayne Blvd.
- Create strong pedestrian routes along central green space within campus.
- Establish defined pedestrian crossings from parking areas to campus core.
- Strengthen bike/pedestrian link to Oleta River Park.

# BISCAYNE BAY CAMPUS: 2020 PLAN



# DISCUSSION / Q&A 6